

Paper weight-110# (minimum)

Black nonfading ink required

# U.S. PUBLIC LAND SURVEY MONUMENT RECORD

For Public Land Survey Corners In:

WI ADMINISTRATIVE CODE A-E 7.08 REQUIREMENT

T. 1 N. R. 10 E. 4th P.M.

REV 10/23/2004

USMONREC.DWG

CORNER CODE INDEX

A	1	2	3	4	5	6	7	8	9	10	11	12	13	14	15	16	17	18	19	20	21	22	23	24	25	A
B																										B
C																										C
D																										D
E																										E
F																										F
G																										G
H																										H
J																										J
K																										K
L																										L
M																										M
N																										N
O																										O
P																										P
Q																										Q
R																										R
S																										S
T																										T
U																										U
V																										V
W																										W
X																										X
Y																										Y
Z																										Z

Avon TWP  
ROCK COUNTY WI

IF AVAILABLE  
ROCK COUNTY COORDINATES PREFERRED

North \_\_\_\_\_ Elev. \_\_\_\_\_

East \_\_\_\_\_

Hor. Datum \_\_\_\_\_ Vert. Datum \_\_\_\_\_

LATITUDE \_\_\_\_\_ ELLIPS. HT. \_\_\_\_\_

LONGITUDE \_\_\_\_\_

NAD83(91) \_\_\_\_\_ NETWORK ADJ. YR \_\_\_\_\_

GPS (X) \_\_\_\_\_ TRAVERSE (X) \_\_\_\_\_

BASED ON THE FOLLOWING CONTROL:

PLACE MONUMENT SYMBOL  $\blacklozenge$  AT PROPER LOCATION ON ABOVE INDEX

$\blacklozenge$  CORNER MONUMENT

$\circ$  WITNESS MONUMENT

(a)

BEARINGS ARE BASED ON: WISCONSIN STATE PLANE COORDINATES (SOUTH)



FND. HARRISON MON.  
NW COR. SEC. 32

SET 1" IRON PIPE  
 $\pm$  1.5' BELOW SURFACE

FND. 1" SQ. BAR  
NE COR. OF SEC. 32



FND. ALUM. MON.  
W 1/4 SEC. 32

S00°51'18\"/>

FND. ALUM. MON.  
S 1/4 OF SEC. 32

FND. 3/4" REBAR  
E 1/4 OF SEC. 32

FIELD BOOK \_\_\_\_\_ PAGE # \_\_\_\_\_

SHEET 1 OF 2

SHOW A PLAN VIEW DRAWING DEPICTING THE CORNER MONUMENT AND SURROUNDING PHYSICAL FEATURES, INCLUDING THE EXCAVATION AREA AND DEPTH.

PLANNING & ZONING COMMITTEE ADOPTED THIS FORM ON 12/2/1982

CORNER CODE V-007

(B) Describe any record evidence, monument evidence, occupational evidence, testimonial evidence or any other material evidence you considered, and whether the monument was found or placed.

EDWARD RUGER SURVEYED A LARGE PORTION OF SECTION 32 AS SHOWN IN CSR VOL. 2 PG. 201, AND FURTHER SHOWN IN REPLICATION IN CSR VOL. 2, PG. 247. RUGER SHOWS THE NORTH 1/4 CORNER OF SECTION 32 TO BE SET ON THE MIDPOINT OF THE LINE BETWEEN THE NORTHWEST CORNER AND THE NORTHEAST CORNER OF SECTION 32. THE POSITION OF THIS CORNER FALLS IN THE MIDDLE OF A LARGE FIELD WITH NO OCCUPATIONAL EVIDENCE LEFT. AT THE MIDPOINT OF A LINE BETWEEN THE NORTHWEST AND THE NORTHEAST CORNERS OF SECTION 32 I DUG AND PROBED A CIRCLE 20 FEET IN DIAMETER AND FOUND NO EVIDENCE OF THE LIMESTONE THAT RUGER SET. USING THIS MIDPOINT AS THE BEST AVAILABLE EVIDENCE I SET A 1" IRON PIPE FOR THE CORNER AND WITNESSED IT AS SHOWN ON THIS DOCUMENT.

C) Was the corner restored through acceptance of (1) an obliterated evidence location, or, (2) a found perpetuated location?

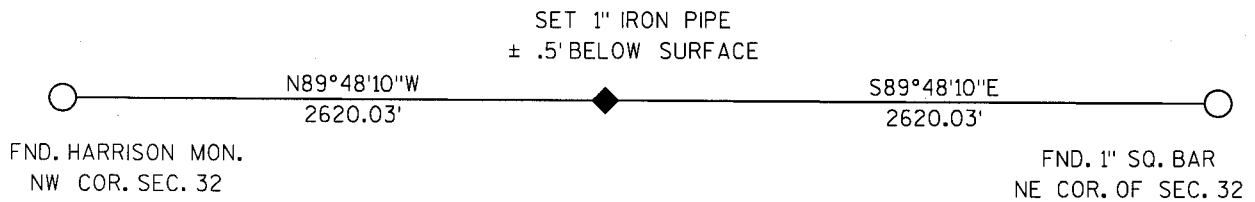
NO

D) Describe any material discrepancy between the location of the corner as restored or reestablished and the location of that corner as previously restored or reestablished by distance and direction. Show the discrepancy on the plan view drawing under (a), above. Show the distances between the corner as previously restored or reestablished and (1) the corner as restored or reestablished, and (2) to at least 4 of the witness monuments shown on the drawing in (a), above.

NONE

(E) Was the corner reestablished through lost corner proportionate methods? If so, show the method, including the directions and distances to other public land survey corners used as evidence or used for proportioning the corner location.

YES



I, JASON L. CANCE, hereby certify that the corner location as identified by the corner code index was determined by me under my direction and control and that this U.S. Public Land Survey Monument Record is correct and complete to the best of my knowledge and belief.

*Jason L. Cance* 8-25-09



SHEET 2 OF 2

A.E. 7.08 REQUIREMENT

CORNER CODE

V-007