

# U.S. PUBLIC LAND SURVEY MONUMENT RECORD

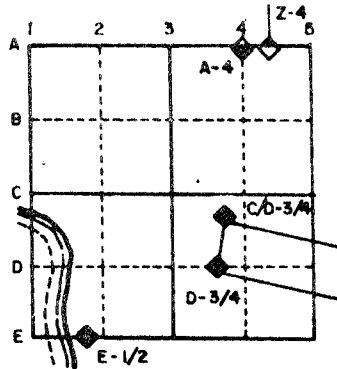
For Public Land Survey Corners in the

T. 4 N., R. 10 E.

## CORNER CODE INDEX

	1	2	3	4	5	6	7	8	9	10	11	12	13	14	15	16	17	18	19	20	21	22	23	24	25
A																									
B																									
C																									
D																									
E																									
F																									
G																									
H																									
I																									
J																									
K																									
L																									
M																									
N																									
O																									
P																									
Q																									
R																									
S																									
T																									
U																									
V																									
W																									
X																									
Y																									
Z																									

### EXAMPLE



UNION TWP  
ROCK COUNTY WI

IF AVAILABLE  
STATE PLANE COORDINATES

North (Y) 279,861.79      Eleve. (Z) 880  
 East (X) 2188306.20      Zone \_\_\_\_\_  
 Hor. Datum \_\_\_\_\_      Vert. Datum \_\_\_\_\_

PLACE MONUMENT SYMBOL (◆) AT PROPER LOCATION ON ABOVE INDEX

(a)

◆ CORNER MONUMENT

Fd 2" IRON PIPE  
SET CONCRETE POST

○ WITNESS MONUMENT

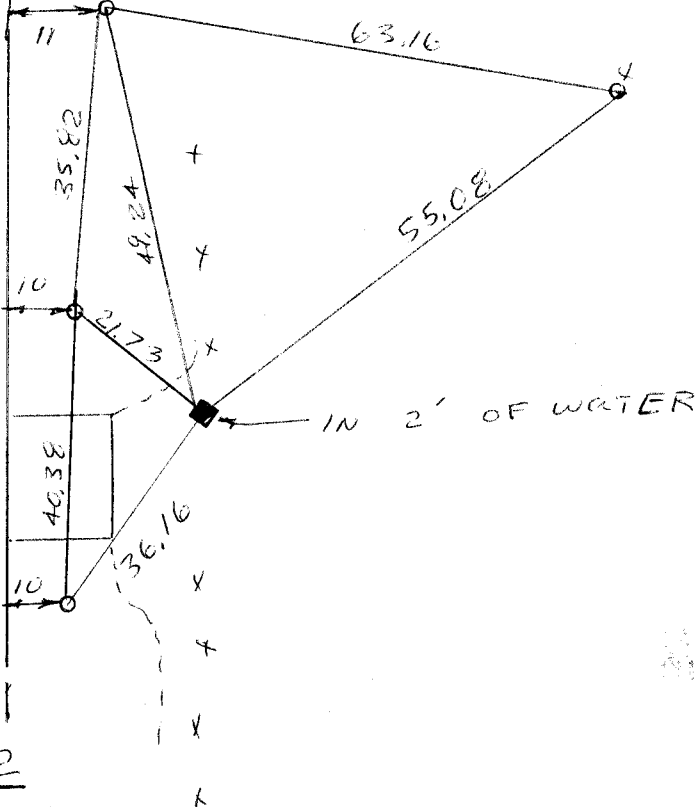
1 1/2" (CD) x 24" PIPE

S.T.H.  
213

GAS SUB  
STATION

BEARINGS ARE BASED ON:

C.M.P.



FIELD BOOK 3 PAGE # 2

SHOW A PLAN VIEW DRAWING DEPICTING THE CORNER MONUMENT AND SURROUNDING PHYSICAL FEATURES, INCLUDING THE EXCAVATION AREA AND DEPTH. THE CORNER MONUMENT SHALL HAVE THE FOLLOWING CHARACTERISTICS: 1) HAVE AT LEAST TWO PREDETERMINED BREAK-OFF POINTS. 2) IF BROKEN, LEAVE A PERMANENTLY MAGNETIZED REMNANT AT THE ORIGINAL POINT. 3) MUST BE EXTENDABLE. 4) THE CAP IS INSCRIBED: ROCK COUNTY SURVEY MONUMENT - PENALTY FOR DISTURBING MARKER. 5) OR AN EXISTING CUT LIMESTONE. AN IRON PIPE 1 1/2" x 4'0" (MINIMUM) MAY BE USED IN AREAS WHERE GROUND WATER IS WITHIN ONE FOOT OF THE SURFACE. IF THE CORNER IS OCCUPIED BY AN IMPROVEMENT (MANHOLE, BURIED CABLE, ETC.) ANY DURABLE, DISTINCT MONUMENT MAY BE USED. CORNERS SHALL BE REFERENCED WITH AT LEAST 4 DURABLE WITNESS MONUMENTS. WITNESS MONUMENTS SHALL BE MADE OF CONCRETE, NATURAL STONE, IRON OR OTHER EQUALLY DURABLE MATERIAL, EXCEPT WOOD. DESCRIBE THE CORNER AND THE WITNESS MONUMENTS.

CORNER CODE:

X 15

(b.) Describe any record evidence, monument evidence, occupational evidence, testimonial evidence or any other material evidence you considered, and whether the monument was found or placed.

1. IN 1855 JOSEPH CHURCH PLACED A LIMESTONE AND STAKE. HE USED THE EQUALDISTANCE METHOD AS PRESCRIBED BY THE LAWS OF 1853 WHICH WERE IN AFFECT UNTIL 1858. IN VOL 2 PAGE 45 HE STATED HE FOUND EITHER THE POST OR GOVERNMENT BEARING TREES AT ALL THE QUARTER CORNERS. HE PLACED POSTS AT THE 1/16th CORNERS WHICH WERE ON THE E/W AND N/S CENTER-LINES OF THE SECTION.
2. IN 1870 ED RUGER FOUND THE STAKES AT ALL THE QUARTER CORNERS EXCEPT THE EAST QUARTER CORNER. HE PLACED THIS ON LINE BETWEEN THE NE AND THE SE CORNERS AT MID POINT.
3. IN 1891 BLEEDHORN PLACED A STAKE AND LIMESTONE AT THE INTERSECTION OF THE 1/4 LINES.
4. IN 1966 VOLUME 4 PAGE 296 SHOWS THAT C. SHIMEALL SET A 2" PIPE AT THE INTERSECTION OF THE 1/4 LINES.

(c.) Was the corner restored through acceptance of (1) an obliterated evidence location, or, (2) a found perpetuated location?

(d.) Describe any material discrepancy between the location of the corner as restored or reestablished and the location of that corner as previously restored or reestablished by distance and direction. Show the discrepancy on the plan view drawing under (a), above. Show the distances between the corner as previously restored or reestablished and (1) the corner as restored or reestablished, and (2) to at least 4 of the witness monuments shown on the drawing in (a), above.

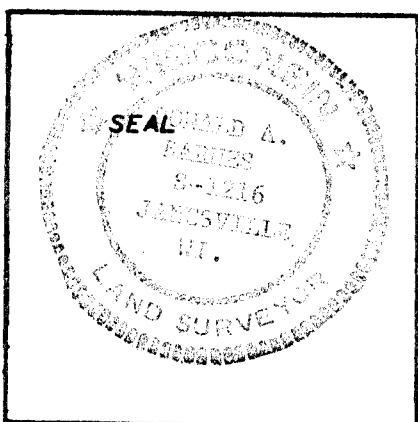
IT APPEARS THAT CHURCH'S AND BLEEDHORN'S MONUMENTS WERE DESTROYED. I ACCEPTED SHIMEALL'S PIPE BECAUSE:

1) SHIMEALL'S PIPE IS IN HARMONY WITH CHURCH'S. EVEN THOUGH THE METHODS ARE DIFFERENT. THE ALLOWABLE ERROR IN 1855 WAS SUCH THAT THE 2" PIPE ALSO COMPLIES WITH THAT PROCEDURE.

2) THE LOCATION OF CHURCH'S MONUMENT COULD NOT BE DETERMINED SINCE THE EAST QUARTER CORNER AND 1/16th CORNERS WERE NOT PERPETUATED AS CHURCH FOUND THEM.

(e.) Was the corner reestablished through lost corner proportionate methods? If so, show the method, including the directions and distances to other public land survey corners used as evidence or used for proportioning in determining the corner location.

I, Donald Barnes, hereby certify that the corner points as identified by the corner code index were, in a field survey on April 3, 1985, established, re-established, monumented, re-monumented, recovered or restored as expressed below and in conformance with the regulations and rules as required in the current manual of survey instructions of the United States Department of Interior, Bureau of Land Management.



COUNTY SURVEYOR FILING DATA

Date of Computer Entry \_\_\_\_\_

Date Received \_\_\_\_\_

Date Microfilmed May 15 1985

Treasurer's Receipt No. \_\_\_\_\_

Number of Included Sheets \_\_\_\_\_

AFFIX YOUR LAND SURVEYOR SEAL. CORNER CODE X15