

Paper weight-110# (minimum)

Black nonfading ink required

U.S. PUBLIC LAND SURVEY MONUMENT RECORD

For Public Land Survey Corners In:

WI ADMINISTRATIVE CODE A-E 7.08 REQUIREMENT

T. 1 N. R. 10 E. 4th P.M.

REV 10/23/2004

USMONREC.DWG

CORNER CODE INDEX

AVON TWP
ROCK COUNTY WI

IF AVAILABLE
ROCK COUNTY COORDINATES PREFERRED

1	2	3	4	5	6	7	8	9	10	11	12	13	14	15	16	17	18	19	20	21	22	23	24	25	
A																									A
B	6					5																			B
C																									C
D																									D
E																									E
F																									F
G	7					8																			G
H																									H
J																									J
K																									K
L	18					17																			L
M																									M
N																									N
O																									O
P	19					20																			P
Q																									Q
R																									R
S																									S
T	30					29																			T
U																									U
V																									V
W	31					32																			W
X																									X
Y																									Y
Z																									Z

North _____ Elev. _____

East _____

Hor. Datum _____ Vert. Datum _____

LATITUDE _____ ELLIPS. HT. _____

LONGITUDE _____

NAD83(91) _____ NETWORK ADJ. YR _____

GPS (X) _____ TRAVERSE (X) _____

BASED ON THE FOLLOWING CONTROL:

PLACE MONUMENT SYMBOL AT PROPER LOCATION ON ABOVE INDEX

CORNER MONUMENT

WITNESS MONUMENT

(a)

BEARINGS ARE BASED ON:

FIELD BOOK _____ PAGE # _____

SHEET 1 OF 4

SHOW A PLAN VIEW DRAWING DEPICTING THE CORNER MONUMENT AND SURROUNDING PHYSICAL FEATURES, INCLUDING THE EXCAVATION AREA AND DEPTH.

PLANNING & ZONING COMMITTEE ADOPTED THIS FORM ON 12/2/1982

CORNER CODE V-9

AV605

(B) Describe any record evidence, monument evidence, occupational evidence, testimonial evidence or any other material evidence you considered, and whether the monument was found or placed.

1834 HARRISON NORTH BET. SECS 32 & 33
990 LEAVE DRY PRAIRIED & ENTER WET BOTTOM
2640 SET POST FOR 1/4 SEC COR. RAISED MOUND
5280 COR TO SEC 28,29,32 & 33 SET POST & RAISED A
MOUND. LAND IS THE SAME AS BEFORE SAVE THE DRY
PRAIRIE, WHICH IS LEVEL 2ND RATE.

1833 HARRISON EAST ON RAND. BET SECS 28 & 33
2640 SET A TEMPY 1/4 SEC COR
5233.80 INT. E BDY AT POST. LAND SAME LEVEL & WET.
BOTTOM AS BEFORE
WEST CORRECTED WEST
2616.90 SET 1/4 SEC COR AT AVG DIS ON TRUE LINE. SET
POST & RAISED A MOUND
5233.8 INT. SEC COR.

1833 HARRISON EAST ON RAND. BET SEC 29 & 32
2640 SET TEMPY 1/4 POST
5217.3 INT. EAST BND 6.6' N OF POST LAND &
CREEK BOTTOM SAME AS BEFORE DESCRIBED
WEST CORRECTED WEST
2608.65 SET 1/4 SEC POST AT AVG DIST NO TREES POST &
RAISED MOUND
5217.3 INT SEC CORNER

1833 HARRISON NORTH BET 28 & 29
2640 SET POST FOR 1/4 SEC COR.
POST & RAISED MOUND
5280 SET POST FOR COR TO SECS 29,21,20
LAND & SAMES AS BEFORE DESCRIBED.

1857 Mc VEAN AVON TWP RD RECORDS BK 1 PG 32 THIS DAY
SURVEYED BY DIRECTION OF THE SUPERVISORS OF THE TOWN
OF AVON THE FOLLOWING DESCRIBED ROAD TO WIT:
COMMENCING AT THE CORNERS OF SECTION 32 & 33 THENCE
RUNNING NORTH ON THE SECTION LINE TWO MILES TO THE
SOUTH EAST CORNER OF SEC 20 THENCE WEST ON THE SEC
LINE 20 CHAINS, THENCE NORTH ON THE QUARTER QUARTER
LINE 40 CHAINS TO THE NW COR OF THE NW QUARTER OF THE
SE QUARTER OF SEC 20 " " " ". VAR OF THE MAGNITIC NEEDLE
SIX DEGREES EAST. DEC 5TH 1857

1861 ?? AVON TWP RD RECORDS BK 1 PG 36 THEREAS UPON THE
APPLICATION OF SIX FREEHOLDERS RESIDING IN THE TOWN
OF AVON FOR THE LAYING OUT AND ESTABLISHING OF A HWY
HEREINAFTER DESCRIBED WE THE UNDERSIGNED
SUPERVISORS OF SAID TOWN DID MEET AT THE HOUSE OF LE
FAYETTE ODELL ON THE 16TH DAY OF MARCH 1861 FOR THE
PURPOSE OF THEN AND THERE DECIDING UPON THE PETITION
OF SAID FREEHOLDERS IT BEING THE TIME AND PLACE FIXED
BY US FOR THAT PURPOSE AND HAVING THEN AND THERE
HEARD SUCH REASONS AS WERE OFFERED FOR AND AGAINST
LAYING OUT AND ESTABLISHING SUCH HIGHWAY, DID THEN
AND THERE DECIDE UPONS SUCH APPLICATION AND
DETERMINED TO LAYOUT AND ESTALISH SAID HIGHWAY AS
HEREIN AFTER DESCRIBED; COMMENCING AS FOLLOWS ON
THE SEC LINE BETWEEN SECTIONS 32 AND 33, THENCE
FUNNING NORTH ON THE SECTION LINE TWO MILES TO THE SE
CORNER OF SEC 20 THENCE WEST ON THE SEC LINE 20
CHAINS THENCE NORTH ON THE QUARTER LINE FORTY CHAINS
" " " " " ", VARIATION OF THE MAGNETIC NEEDLE SIX DEGREES
EAST, THE ABOVE ROAD TO BE FOUR RODS WIDE. MAR 16TH
1861.

1864 LOCKE VOL 1 PG 224 FD STAKE SET BY McVEAN VAR 4-40
ALONG S1/4 LINE OF SEC 28, VAR 7-40 2648.91 TO W 1/4 COR
SEC 28, & VAR 7-40 5297.82 TO NW COR SEC 28

SHEET 1 OF 4
CORNER CODE V-9

Donald Bauer
5-06-07

AV605

1864 LOCKE #80011 & #06102 SAME AS VOL 1 PG 224

1878 RUGER VOL 2 PG 247 FOUND POST SET BY LOCKE-SET IN ITS PLACE A BURNT POST & PUT LIMESTONE ON NORTH SIDE OF POST. VAR5-02 2614.59 TO N 1/4 COR SEC 32 & VAR 5-02 5229.18 TO NW COR SEC 32.

1900 BROWN VOL 2 PG 517 FD BURNT POST & LIMESTONE. SET IRON. WESTERLY 1307.30 TO FD LIMESTONE 14X7X3, NORTHERLY 2641.98 TO W 1/4 COR SEC 28, EASTERLY 2662.11 TO N 1/4 COR SEC 33 (OLD COR LOST RAN LINE FROM SOUTH SET IRON), SOUTHERLY 2723.16 TO W 1/4 COR SEC 33 (FD POST LIMES ON N. SET IRON).

1975 BICKLE #100/105/201 FD IRON. 5297.62 TO NE COR SEC 29 & 5239.38 TO SW COR SEC 29.

I FD A 30" X 3/4" X 1/4" SQUARE AXLE WITH A ROUND END AND SQUARE END. THE SQUARE END IS POINTING UP. THE AXLE WAS LEANING SLIGHTLY TO THE WEST. STRAIGHTENED IT & DROVE 12" BELOW SURFACE. PLACED TWO MAGNETS ON EAST SIDE. THE MONUMENT IS IN OPEN FARM FIELD, WEST OF A N/S DRAINAGE DITCH, & SOUTH OF A E/W DRAINAGE DITCH.

C) Was the corner restored through acceptance of (1) an obliterated evidence location, or, (2) a found perpetuated location?

ACCEPTED FD PERPETUATED LOCATION

D) Describe any material discrepancy between the location of the corner as restored or reestablished and the location of that corner as previously restored or reestablished by distance and direction. Show the discrepancy on the plan view drawing under (a), above. Show the distances between the corner as previously restored or reestablished and (1) the corner as restored or reestablished, and (2) to at least 4 of the witness monuments shown on the drawing in (a), above.

NONE

(E) Was the corner reestablished through lost corner proportionate methods? If so, show the method, including the directions and distances to other public land survey corners used as evidence or used for proportioning the corner location.

NO

I, **Donald Barnes**, hereby certify that the corner location as identified by the corner code index was determined by me under my direction and control and that this U.S. Public Land Survey Monument Record is correct and complete to the best of my knowledge and belief.

Seal

Emboss

SHEET 2 OF 4

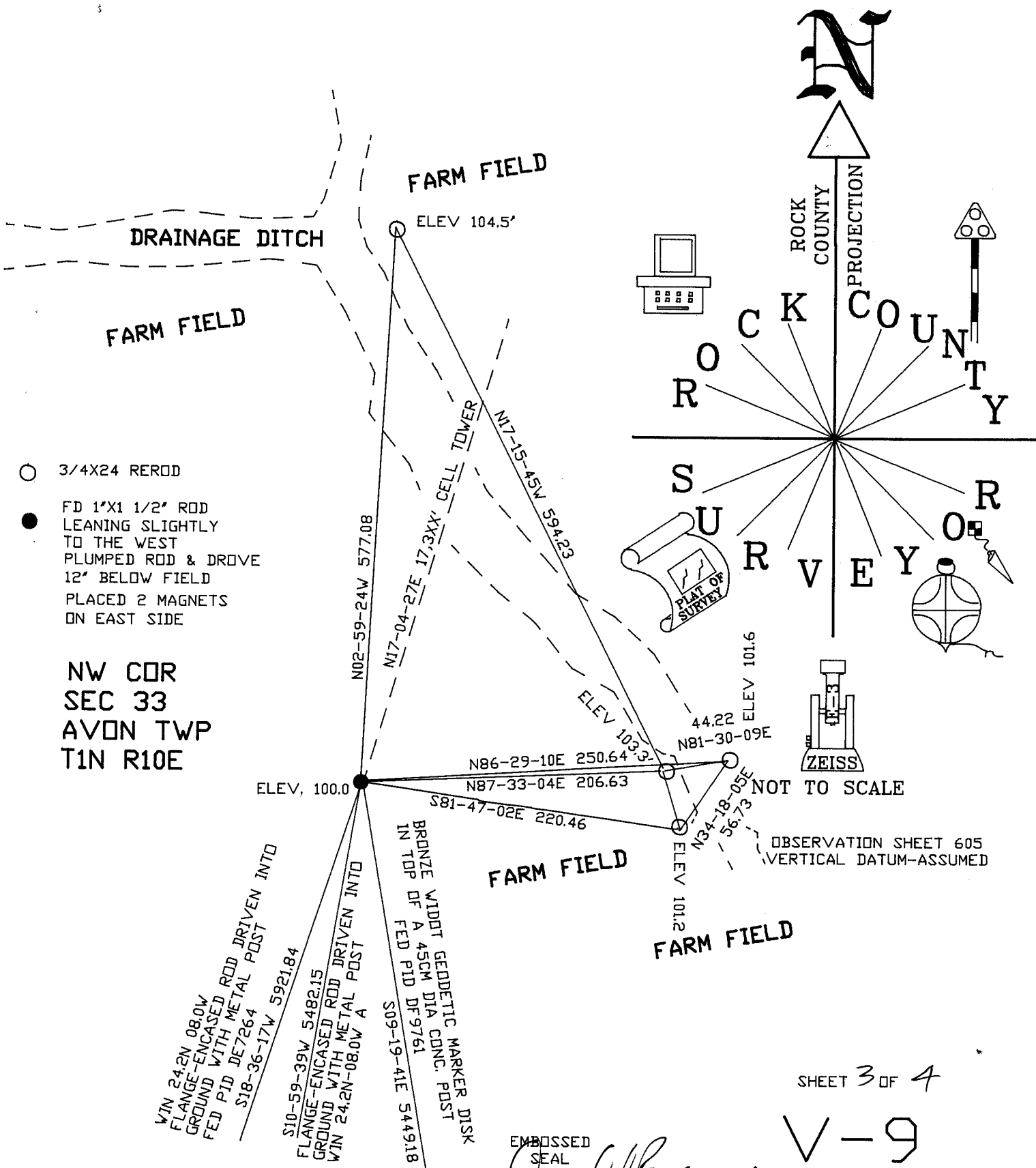
5-06-07

CORNER CODE

V-9

A.E. 7.08 REQUIREMENT

207, 771
411, 328



NW COR
SEC 33
AVON TWP
T1N R10E

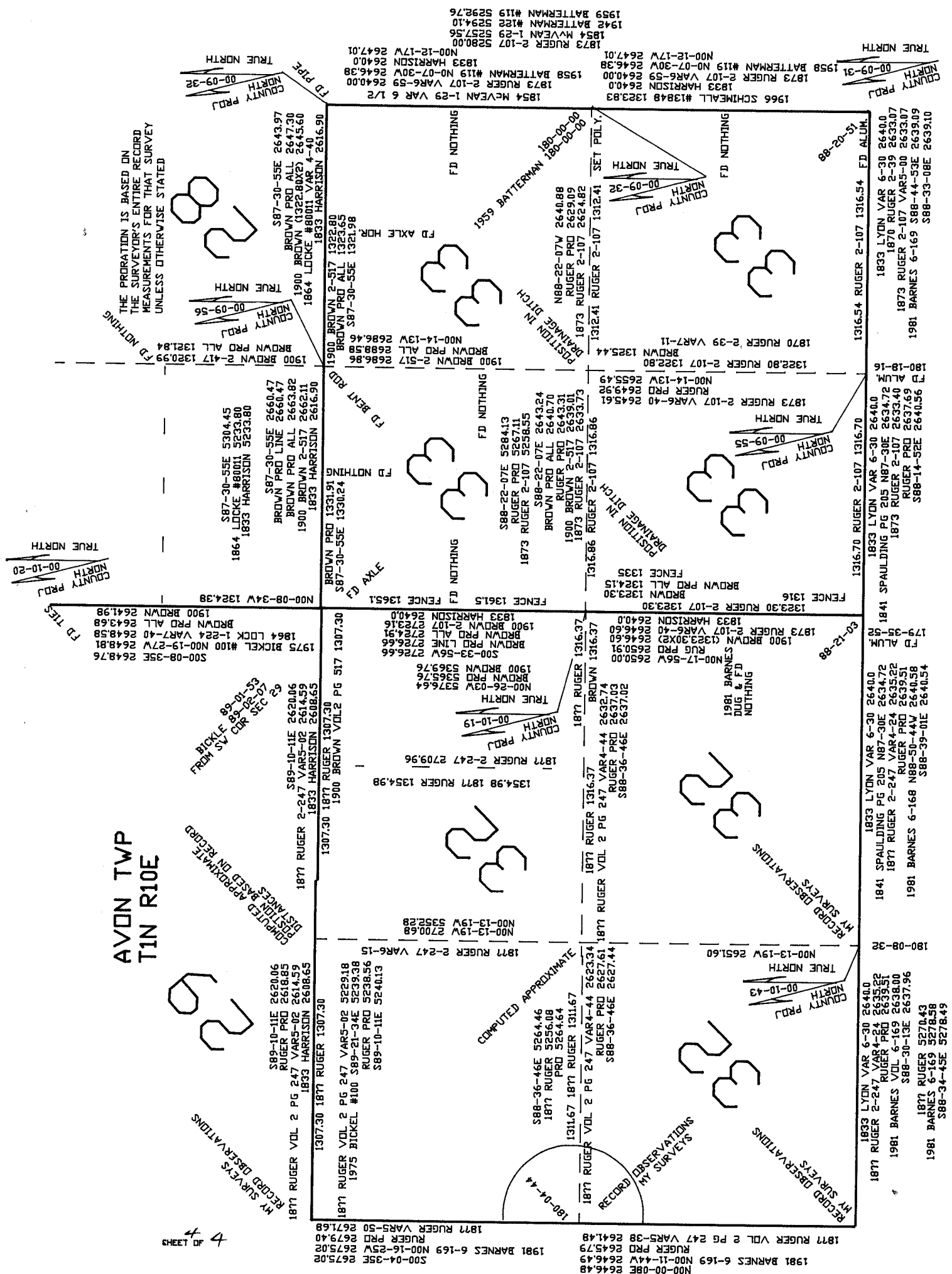
SHEET 3 OF 4

EMBOSSSED SEAL
Donald Brown
5-06-07

V-9

AVON TWP
T1N R10E

THE PROPORTION IS BASED ON
THE SURVEYOR'S ENTIRE RECORD
MEASUREMENTS FOR THAT SURVEY
UNLESS OTHERWISE STATED



4 4
OF LEASE

EMBOSSSED
SEAL
Ronald Barnes
5-06-07

1981 BARNES 6-169 5281.51
1877 RUGER 2-247 5313.16
RUGER PRD 5325.18
1981 BARNES 6-169 2646.49
1877 RUGER 2 PG 247 VARS-39 2644.49

V-9