

# U.S. PUBLIC LAND SURVEY MONUMENT RECORD

For Public Land Survey Corners In:

WI ADMINISTRATIVE CODE A-E 7.08 REQUIREMENT

T.    N. R.   10   E.

CORNER CODE INDEX

A	1	2	3	4	5	6	7	8	9	10	11	12	13	14	15	16	17	18	19	20	21	22	23	24	25	A
B			6				5				4				3			2			1					B
C																										C
D																										D
E																										E
F																										F
G																										G
H																										H
J																										J
K																										K
L																										L
M																										M
N																										N
O																										O
P																										P
Q																										Q
R																										R
S																										S
T																										T
U																										U
V																										V
W																										W
X																										X
Y																										Y
Z																										Z

AVON TWP

ROCK COUNTY WI

IF AVAILABLE  
ROCK COUNTY COORDINATES PREFERRED

North \_\_\_\_\_ Elev. \_\_\_\_\_

East \_\_\_\_\_

Hor. Datum \_\_\_\_\_ Vert. Datum \_\_\_\_\_

LATITUDE \_\_\_\_\_ ELLIPS. HT. \_\_\_\_\_

LONGITUDE \_\_\_\_\_

GPS (X) \_\_\_\_\_ TRAVERSE (X) \_\_\_\_\_

BASED ON THE FOLLOWING CONTROL:  
\_\_\_\_\_

PLACE MONUMENT SYMBOL  AT PROPER LOCATION ON ABOVE INDEX

CORNER MONUMENT

WITNESS MONUMENT

(a)

BEARINGS ARE BASED ON: \_\_\_\_\_

FIELD BOOK \_\_\_\_\_ PAGE # \_\_\_\_\_

SHEET   1   OF   3  

SHOW A PLAN VIEW DRAWING DEPICTING THE CORNER MONUMENT AND SURROUNDING PHYSICAL FEATURES, INCLUDING THE EXCAVATION AREA AND DEPTH.

PLANNING & ZONING COMMITTEE ADOPTED THE ABOVE FORM ON 12/2/1982

CORNER CODE   R9

AV585

(B) Describe any record evidence, monument evidence, occupational evidence, testimonial evidence or any other material evidence you considered, and whether the monument was found or placed.

1834 HARRISON NORTH BET. 28 & 29  
2640 SET POST FOR ¼ SEC COR. POST & RAISED MOUND  
5280 SET POST FOR COR TO SEC 29 & 21 POST & RAISED  
A MOUND. LAND SAME AS BEFORE DESCRIBED.  
EAST ON RAND BET SECS 21 & 28  
198 INT. SUGAR CRK CRS SOUTH SET A MEANDERING  
POST & RAISED MOUND LAND SAME  
EAST ON RAND. BET 21 & 28 CONT.  
392.7 LEAVE RIVER SET MEANDER P. & ENTER ELM &  
MAPLE BOTTOM  
1980 LEAVE IT & ENTER W & RED OAK TIM.  
2640 TEMPY ¼ P  
2970 ENTER WET MARSH  
5263.5 INT. E BDY 19.8' N OF P. LAND LEVEL & WET 3<sup>RD</sup>  
RATE TIM. ELM. MAPLE W & RED OAK.  
WEST COR. WEST  
2631.09 QUARTER SEC COR. RED O 10 S35E 17.82 RED OAK  
12 N24W 13.2'  
4870.8 SET MP ON LEFT BANK SUGAR CRK WILLOW 10 N12E  
13.86' ELM 12 N18W 49.5'  
5263.5 SEC COR.  
EAST ON RAND. BET SEC SECS 20 & 29  
2640 SET A TEMPY ¼ POST  
5227.2 ENT E BDY 15.18' N OF P. LAND CREEK BOTTOM  
WITH SAME AS BEFORE  
COR WEST  
2613.6 SET ¼ SEC COR AT ? DIST ON TRUE LINE SET POST &  
RAISED MOUND  
5227.2 INT SEC COR.  
NORTH BET SECS 20 & 21  
1079.76 INT. SUGAR CREEK CRS E SET MEANDERING POST &  
RAISED MOUND LAND LEVEL AND DRY 2<sup>ND</sup> RATE  
BOTH ? GRASS & WEEDS  
NORTH BET SECS 20 & 21  
1185.36 LEAVE RIVER SET M.P. WILLOW 8 N54W 17.82'  
MAPLE 8 N20E 32.34' WILLOW 8 MAPLE 8 } MARKED  
2145 ENTER PRAIRIE  
2640 QUARTER SEC COR RED OAK 18 N75W 80.52' RED  
OAK S20W 149.82' RED OAK 18 RED OAK 8 }  
MARKED  
5280 SET COR TO SECS 16, 17, 20, 21 POST & RAISED  
MOUND LAND SOUTH ½ LOW & WET WITH MAPLE  
TIMBER N ½ LEVEL 2<sup>ND</sup> RATE PRAIRIE  
1864 LOCKE VOL 1 PG 224 FD OLD STAKE SET LIMESTONE  
19X12X7. VAR 4-40 231' (EAST) TO SET LIMESTONE 12 ½ X6 ½  
X6 AND ANOTHER 15X4X3 ½ (ON WEST BANK OF STREAM).  
{W ¼ COR SEC 28 WAS SET ON LINE BETWEEN SW & NW COR  
SEC 8} VAR 7-40 2648.91 TO W ¼ COR SEC 28.  
1864 LOCKE VOL 1 PG 225 SEE SEC 28, VAR 7-40 1155' (NORTH)  
TO SET LIMESTONE 13X4 ½ X4 ON SOUTH BANK, VAR 8-35  
1318.52 (WEST) TO SET LIMESTONE 14X7X4. S ¼ COR SEC 20  
IS ON LINE BETWEEN SW & SE COR SEC 20 7 2637.03 FROM SW  
& SE CORNERS SEC 20  
1889 BLEEDORN MAP #00073 SET LIMESTONE SURROUNDED BY  
2 LIMESTONES.  
1900 BROWN VOL2 PG 517 SET IRON, 198' (EAST) TO SET  
IRON, 2648.91 TO W ¼ COR SEC 28, & 1318.52' (WEST) TO FD  
LIMESTONE 14X7X4  
1975 BATTERMAN IRON FD AT NE COR SEC 29. 5271.97 TO NW  
COR SEC 29, 2648.8' TO IRON SET AT E ¼ COR SEC 29, ANGLE  
AT NW COR SEC 29 FROM NE COR SEC 29 TO W ¼ COR SEC 29  
88-14-38.

SHEET 1 OF 3

Donald Barnes

11-30-01

CORNER CODE R-9

AV585

DUG A 2.5 X 2.5' HOLE 1' DEEP AND DID NOT FIND MON. HOLE FILLED WITH WATER. SEARCHED AREA WITH METAL LOCATOR AND DID NOT FIND MON. SEARCHED FOR M.P. TO THE EAST AND FOUND NOTHING. SET 3/4X24" REROD/CAP & CARBONITE POST ON NORTH SIDE BY USING BATTERMAN'S 1975 SURVEY. TERRAIN IS SUCH THAT THE OLD MONUMENTS SHOULD STILL BE THERE BUT I COULD NOT FIND THE MONUMENTS.

C) Was the corner restored through acceptance of (1) an obliterated evidence location, or, (2) a found perpetuated location?

ACCEPTED OBLITERATED EVIDENCE LOCATION.

D) Describe any material discrepancy between the location of the corner as restored or reestablished and the location of that corner as previously restored or reestablished by distance and direction. Show the discrepancy on the plan view drawing under (a), above. Show the distances between the corner as previously restored or reestablished and (1) the corner as restored or reestablished, and (2) to at least 4 of the witness monuments shown on the drawing in (a), above.

(E) Was the corner reestablished through lost corner proportionate methods? If so, show the method, including the directions and distances to other public land survey corners used as evidence or used for proportioning the corner location.

I, Donald Barnes, hereby certify that the corner location as identified by the corner code index was determined by me under my direction and control and that this U.S. Public Land Survey Monument Record is correct and complete to the best of my knowledge and belief.

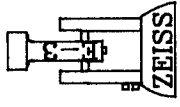
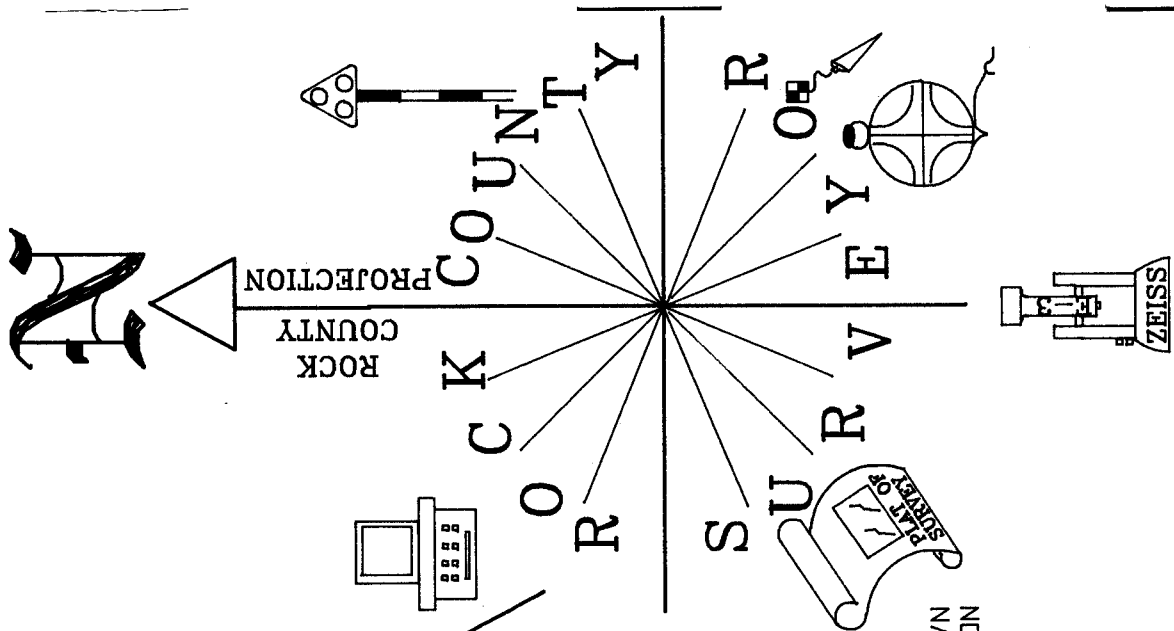
Seal

SHEET 2 OF 3

Emboss  
Donald Barnes  
11-30-01

CORNER CODE **R-9**

A.E. 7.08 REQUIREMENT



NOT TO SCALE  
OBSERVATION SHEETS #31&33

SUGAR CREEK

NW COR  
SEC 28  
AVON TWP  
T1N R10E

SET 3/4X24  
REROD /CAP  
CARSONITE ON  
NORTH SIDE

1' SOUTH OF E/W FENCE  
PROJECTED FROM EAST  
1' EAST OF N/S FENCE  
PROJECTED FROM SOUTH

WOODS & WET LAND

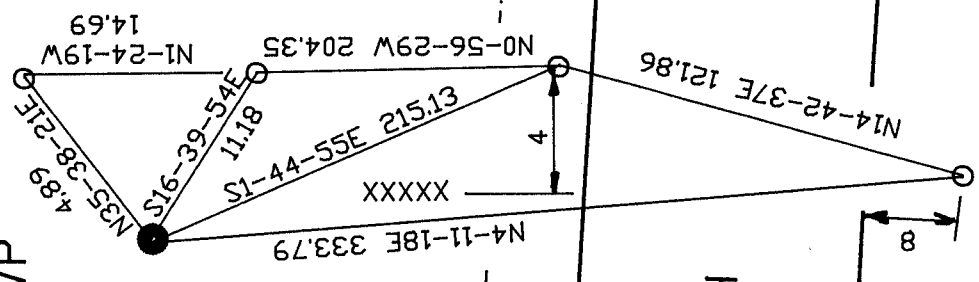
XXXXXXXXXX  
1834 HARRISON 198  
1864 LOCKE 231  
1900 BROWN 198

SEARCHED &  
FOUND NOTHING

WOODS & WET LAND

OLD FENCE POST DOWN  
& PARTS OF FENCE ON  
GROUND

FD NOTHING  
SET 3/4X24  
REROD/CAP



RIDGE

DEEP IRRIGATION DITCH

FARM FIELD

EMBOSSSED SEAL  
*Donald Barnes*

11-30-01

30F3

R-9