

Paper weight-110# (minimum)

Black nonfading ink required

U.S. PUBLIC LAND SURVEY MONUMENT RECORD

For Public Land Survey Corners In:

WI ADMINISTRATIVE CODE A-E 7.08 REQUIREMENT

T. 1N. R. 10E. 4th P.M.

REV 10/23/2004

USMONREC.DWG

CORNER CODE INDEX

AVON TWP
ROCK COUNTY WI

IF AVAILABLE
ROCK COUNTY COORDINATES PREFERRED

A	1	2	3	4	5	6	7	8	9	10	11	12	13	14	15	16	17	18	19	20	21	22	23	24	25	A	
B		6				5				4					3					2						1	B
C																											C
D																											D
E																											E
F																											F
G																											G
H																											H
J																											J
K																											K
L																											L
M																											M
N																											N
O																											O
P																											P
Q																											Q
R																											R
S																											S
T																											T
U																											U
V																											V
W																											W
X																											X
Y																											Y
Z																											Z

North _____ Elev. _____

East _____

Hor. Datum _____ Vert. Datum _____

LATITUDE _____ ELLIPS. HT. _____

LONGITUDE _____

NAD83(91) _____ NETWORK ADJ. YR _____

GPS (X) _____ TRAVERSE (X) _____

BASED ON THE FOLLOWING CONTROL:

PLACE MONUMENT SYMBOL AT PROPER LOCATION ON ABOVE INDEX

CORNER MONUMENT

WITNESS MONUMENT

(a)

BEARINGS ARE BASED ON:

FIELD BOOK _____ PAGE # _____

SHEET 1 OF 4

SHOW A PLAN VIEW DRAWING DEPICTING THE CORNER MONUMENT AND SURROUNDING PHYSICAL FEATURES, INCLUDING THE EXCAVATION AREA AND DEPTH.

PLANNING & ZONING COMMITTEE ADOPTED THIS FORM ON 12/2/1982

CORNER CODE V-11

AV606

N1/4CORSEC33

(B) Describe any record evidence, monument evidence, occupational evidence, testimonial evidence or any other material evidence you considered, and whether the monument was found or placed.

1833 HARRISON EAST ON RAND. BET SECS 28 & 33

2640 SET A TEMPY 1/4 SEC COR

5233.80 INT. E BDY AT POST. LAND SAME LEVEL & WET.
BOTTOM AS BEFORE

WEST CORRECTED WEST

2616.90 SET 1/4 SEC COR AT AVG DIS ON TRUE LINE. SET
POST & RAISED A MOUND

5233.8 INT. SEC COR.

1864 LOCKE #80011 5233.80 [SAME AS THE ORIGINAL
MEASUREMENT] FROM NW TO NE COR SEC 33. VAR
4-40 ON S 1/4 TO SE COR SEC 28.

1870 RUGER VOL 2 PG 39 FD OLD STAKE. SET OVER OLD STAKE
LIMESTONE 14X6X4. VAR 7-11 TO S 1/4 COR SEC 33.

1873 RUGER VOL 2 PG 107 SEE PG 27 FOR CORNERS SET BY SELF.
USED TO SUBDIVIDE SEC 33.

1900 BROWN VOL 2 PG 517 & #00039 OLD COR LOST RAN LINE
FROM S. (SOUTH??) SET IRON. 2662.11 TO NW COR SEC 33,
EASTERLY 1322.80 TO IRON, NORTHERLY 1320.99 TO IRON,
2686.86 TO IRON @ GEN SEC 33, SOUTHERLY 4012.30 TO
IRON.

ABOUT 20' NORTH OF THE CORNER FOUND A BENT 30 X 3/4" X
1 1/4" ROD LYING HORIZONTALLY BELOW THE SURFACE. I ALSO FD
ABOUT 4' EAST A LIMESTONE 14"X4"X6" [REC 14X6X4] SQUARED
OFF WITH A POINTED END LAYING ON TOP OF THE GROUND. THERE
WEREN'T ANY OTHER STONES IN THE AREA. AT THE N 1/16TH
CORNER OF NE 1/4 OF SEC 33 I FD A 30" X 3/4" X 1 1/4" SQUARE
AXLE WITH A ROUND END LAYING HORIZONTALLY BELOW THE
SURFACE. USED THAT AXLE FOR THE N 1/4 COR OF SEC 33. PLACED
IT ABOUT 14" BLOW GRADE. ALSO PLACED 4 MAGNETS AROUND THE
AXLE.

C) Was the corner restored through acceptance of (1) an obliterated evidence location, or, (2) a found
perpetuated location?

ACCEPTED OBLITERATED EVIDENCE LOCATION. THIS IS IN A VERY
LARGE FLAT AND LOW FARM FIELD. THE MONUMENT IS ON LINE
WITH SOME OLD N/S FENCE POSTS THAT I DUG UP. I PLACED THE
AXLE ON LINE WITH THE NW AND NE CORNERS OF SEC 33. I
PRORATED THE NORTH LINE WITH BROWN'S DISTANCES. THIS IS IN
HARMONY WITH RUBER'S PRORATED DISTANCES FROM THE N/S 1/4
LINE TO THE WEST 1/4 COR SEC 33. THIS IS ALSO IN HARMONY WITH
THE BROWN'S PRORATED DISTANCE TO FD DISTURBED HORIZONTAL
AXLE TO THE EAST. I ALSO SEARCHED FOR BROWN'S IRONS AT THE
S 1/16TH COR OF THE SW 1/4 OF SEC 28, THE W 1/16TH COR OF THE SE
1/4 OF SEC 28, THE CENTER OF SEC 33, AND THE W 1/16TH COR OF
THE NE 1/4 OF SEC 33. THE CORNERS WERE IN OPEN FIELDS WITH
NO FENCE LINES OR TREE LINES. THE CENTER OF SEC 33 IS IN A
LARGE E/W DRAINAGE DITCH. ALSO IN HARMONY WITH BROWN'S
DISTANCE FROM THE CENTER OF SEC 33.

Donald Barnes
5-06-07

SHEET 1 OF 4
CORNER CODE V-11

AV606

D) Describe any material discrepancy between the location of the corner as restored or reestablished and the location of that corner as previously restored or reestablished by distance and direction. Show the discrepancy on the plan view drawing under (a), above. Show the distances between the corner as previously restored or reestablished and (1) the corner as restored or reestablished, and (2) to at least 4 of the witness monuments shown on the drawing in (a), above.

IT APPEARS FROM THE MONUMENTS THAT I FOUND AND THE RECORDS THERE IS DISCREPANCY BETWEEN RUGER'S MONUMENT AND THE IRON THAT BROWN SET. THERE IS NO PRACTICAL PLACE FOR CLOSE WITNESS MONUMENTS.

(E) Was the corner reestablished through lost corner proportionate methods? If so, show the method, including the directions and distances to other public land survey corners used as evidence or used for proportioning the corner location.

NO

I, **Donald Barnes**, hereby certify that the corner location as identified by the corner code index was determined by me under my direction and control and that this U.S. Public Land Survey Monument Record is correct and complete to the best of my knowledge and belief.

Seal
Donald Barnes
5-6-07

SHEET 2 OF 4

Emboss

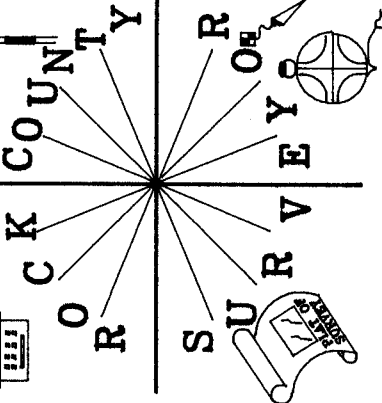
CORNER CODE

V-11

A.E. 7.08 REQUIREMENT



ROCK COUNTY PROJECTION



SET AXLE 14" DEEP / 4 MAGNETS 30"x3/4"x1 1/2" N 1/4 COR

207,656' 413,986'

NOT TO SCALE 2660.47

207,656
413,986

NW CDR SEC 33

FD AXLE ROD WITH RECTANGLE END UP & ABOUT 12" DEEP 30"x3/4"x1 1/2"

FED PID DE7264
WIN 24.2N 08.0W
202,158.812'
409,439.112'

N87-30-55E 2643.98

S87-30-55E 2660.47

N87-30-55E 2643.98

N87-30-55E 2643.98

N87-30-55E 2643.98

N87-30-55E 2643.98

N87-30-55E 2643.98

N87-30-55E 2643.98

N87-30-55E 2643.98

N89-52-08E 1928.74

N85-09-00E 2782.51

N39-35-54E 7134.07

N35-07-01E 6438.04

N14-42-00E 874.82

N14-42-00E 874.82

N14-42-00E 874.82

N14-42-00E 874.82

N14-42-00E 874.82

N14-42-00E 874.82

N14-42-00E 874.82

N14-42-00E 874.82

N14-42-00E 874.82

N14-42-00E 874.82

N14-42-00E 874.82

AVON TWP T1N R10E

N39-35-54E 7134.07

N35-07-01E 6438.04

N14-42-00E 874.82

N14-42-00E 874.82

N14-42-00E 874.82

N14-42-00E 874.82

N14-42-00E 874.82

N14-42-00E 874.82

N14-42-00E 874.82

N14-42-00E 874.82

N14-42-00E 874.82

N89-52-08E 1928.74

N85-09-00E 2782.51

N39-35-54E 7134.07

N35-07-01E 6438.04

N14-42-00E 874.82

N14-42-00E 874.82

N14-42-00E 874.82

N14-42-00E 874.82

N14-42-00E 874.82

N14-42-00E 874.82

N14-42-00E 874.82

N14-42-00E 874.82

N14-42-00E 874.82

N14-42-00E 874.82

N14-42-00E 874.82

N89-52-08E 1928.74

N85-09-00E 2782.51

N39-35-54E 7134.07

N35-07-01E 6438.04

N14-42-00E 874.82

N14-42-00E 874.82

N14-42-00E 874.82

N14-42-00E 874.82

N14-42-00E 874.82

N14-42-00E 874.82

N14-42-00E 874.82

N14-42-00E 874.82

N14-42-00E 874.82

N14-42-00E 874.82

N14-42-00E 874.82

N89-52-08E 1928.74

N85-09-00E 2782.51

N39-35-54E 7134.07

N35-07-01E 6438.04

N14-42-00E 874.82

N14-42-00E 874.82

N14-42-00E 874.82

N14-42-00E 874.82

N14-42-00E 874.82

N14-42-00E 874.82

N14-42-00E 874.82

N14-42-00E 874.82

N14-42-00E 874.82

N14-42-00E 874.82

N14-42-00E 874.82

N89-52-08E 1928.74

N85-09-00E 2782.51

N39-35-54E 7134.07

N35-07-01E 6438.04

N14-42-00E 874.82

N14-42-00E 874.82

N14-42-00E 874.82

N14-42-00E 874.82

N14-42-00E 874.82

N14-42-00E 874.82

N14-42-00E 874.82

N14-42-00E 874.82

N14-42-00E 874.82

N14-42-00E 874.82

N14-42-00E 874.82

N89-52-08E 1928.74

N85-09-00E 2782.51

N39-35-54E 7134.07

N35-07-01E 6438.04

N14-42-00E 874.82

N14-42-00E 874.82

N14-42-00E 874.82

N14-42-00E 874.82

N14-42-00E 874.82

N14-42-00E 874.82

N14-42-00E 874.82

N14-42-00E 874.82

N14-42-00E 874.82

N14-42-00E 874.82

N14-42-00E 874.82

N89-52-08E 1928.74

N85-09-00E 2782.51

N39-35-54E 7134.07

N35-07-01E 6438.04

N14-42-00E 874.82

N14-42-00E 874.82

N14-42-00E 874.82

N14-42-00E 874.82

N14-42-00E 874.82

N14-42-00E 874.82

N14-42-00E 874.82

N14-42-00E 874.82

N14-42-00E 874.82

N14-42-00E 874.82

N14-42-00E 874.82

N89-52-08E 1928.74

N85-09-00E 2782.51

N39-35-54E 7134.07

N35-07-01E 6438.04

N14-42-00E 874.82

N14-42-00E 874.82

N14-42-00E 874.82

N14-42-00E 874.82

N14-42-00E 874.82

N14-42-00E 874.82

N14-42-00E 874.82

N14-42-00E 874.82

N14-42-00E 874.82

N14-42-00E 874.82

N14-42-00E 874.82

N89-52-08E 1928.74

N85-09-00E 2782.51

N39-35-54E 7134.07

N35-07-01E 6438.04

N14-42-00E 874.82

N14-42-00E 874.82

N14-42-00E 874.82

N14-42-00E 874.82

N14-42-00E 874.82

N14-42-00E 874.82

N14-42-00E 874.82

N14-42-00E 874.82

N14-42-00E 874.82

N14-42-00E 874.82

N14-42-00E 874.82

N89-52-08E 1928.74

N85-09-00E 2782.51

N39-35-54E 7134.07

N35-07-01E 6438.04

N14-42-00E 874.82

N14-42-00E 874.82

N14-42-00E 874.82

N14-42-00E 874.82

N14-42-00E 874.82

N14-42-00E 874.82

N14-42-00E 874.82

N14-42-00E 874.82

N14-42-00E 874.82

N14-42-00E 874.82

N14-42-00E 874.82

IL STH 70 SHEET 3 OF 4

V-11

EMBOSSED SEAL

Donald James 5-06-07

FED PID DF9761
AVONS S GPS
202,394.069'
412,211.521'
BRONZE WIDOT GEODETIC CONTROL DISK IN A 45-CM DIAMETER CONCR. POST.

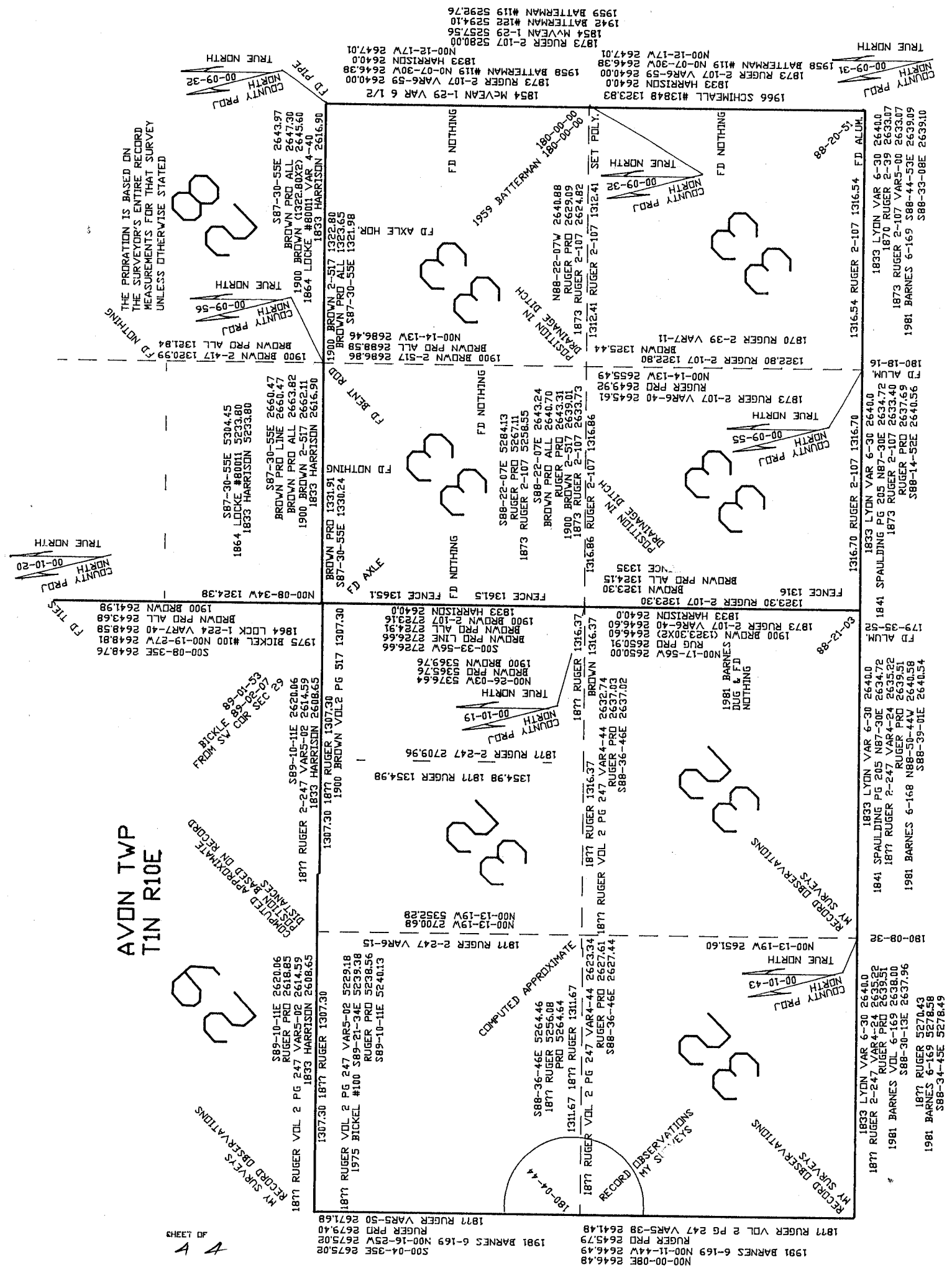
WIN 24.2N-08.0W A
202,389.7X'
410,282.9X'
FLANGE-ENCASED ROD; METAL ROD DRIVEN INTO GROUND; ROD/PIPE A DEPTH OF 3 METERS

IL STH 70 SHEET 3 OF 4

V-11

AVON TWP
T1N R10E

THE PROPORTION IS BASED ON
THE SURVEYOR'S ENTIRE RECORD
MEASUREMENTS FOR THAT SURVEY
UNLESS OTHERWISE STATED



OF LEASE
A A

EMBOSSSED
SEAL
Donald Barnes
5-06-07

1981 BARNES 6-169 5321.50
1877 RUGER 2-247 5313.16
RUGER PRD 5325.18

V-11

1873 RUGER 2-107 5280.00
1854 McVEAN 1-29 5257.56
1942 BATTERMAN #122 5294.10
1959 BATTERMAN #119 5292.76

1873 RUGER 2-107 5280.00
1854 McVEAN 1-29 5257.56
1942 BATTERMAN #122 5294.10
1959 BATTERMAN #119 5292.76

1873 RUGER 2-107 5280.00
1854 McVEAN 1-29 5257.56
1942 BATTERMAN #122 5294.10
1959 BATTERMAN #119 5292.76

1873 RUGER 2-107 5280.00
1854 McVEAN 1-29 5257.56
1942 BATTERMAN #122 5294.10
1959 BATTERMAN #119 5292.76

1873 RUGER 2-107 5280.00
1854 McVEAN 1-29 5257.56
1942 BATTERMAN #122 5294.10
1959 BATTERMAN #119 5292.76

1873 RUGER 2-107 5280.00
1854 McVEAN 1-29 5257.56
1942 BATTERMAN #122 5294.10
1959 BATTERMAN #119 5292.76

1873 RUGER 2-107 5280.00
1854 McVEAN 1-29 5257.56
1942 BATTERMAN #122 5294.10
1959 BATTERMAN #119 5292.76

1873 RUGER 2-107 5280.00
1854 McVEAN 1-29 5257.56
1942 BATTERMAN #122 5294.10
1959 BATTERMAN #119 5292.76

1873 RUGER 2-107 5280.00
1854 McVEAN 1-29 5257.56
1942 BATTERMAN #122 5294.10
1959 BATTERMAN #119 5292.76

1873 RUGER 2-107 5280.00
1854 McVEAN 1-29 5257.56
1942 BATTERMAN #122 5294.10
1959 BATTERMAN #119 5292.76

1873 RUGER 2-107 5280.00
1854 McVEAN 1-29 5257.56
1942 BATTERMAN #122 5294.10
1959 BATTERMAN #119 5292.76

1873 RUGER 2-107 5280.00
1854 McVEAN 1-29 5257.56
1942 BATTERMAN #122 5294.10
1959 BATTERMAN #119 5292.76

1873 RUGER 2-107 5280.00
1854 McVEAN 1-29 5257.56
1942 BATTERMAN #122 5294.10
1959 BATTERMAN #119 5292.76

1873 RUGER 2-107 5280.00
1854 McVEAN 1-29 5257.56
1942 BATTERMAN #122 5294.10
1959 BATTERMAN #119 5292.76

1873 RUGER 2-107 5280.00
1854 McVEAN 1-29 5257.56
1942 BATTERMAN #122 5294.10
1959 BATTERMAN #119 5292.76

1873 RUGER 2-107 5280.00
1854 McVEAN 1-29 5257.56
1942 BATTERMAN #122 5294.10
1959 BATTERMAN #119 5292.76

1873 RUGER 2-107 5280.00
1854 McVEAN 1-29 5257.56
1942 BATTERMAN #122 5294.10
1959 BATTERMAN #119 5292.76

1873 RUGER 2-107 5280.00
1854 McVEAN 1-29 5257.56
1942 BATTERMAN #122 5294.10
1959 BATTERMAN #119 5292.76

1873 RUGER 2-107 5280.00
1854 McVEAN 1-29 5257.56
1942 BATTERMAN #122 5294.10
1959 BATTERMAN #119 5292.76

1873 RUGER 2-107 5280.00
1854 McVEAN 1-29 5257.56
1942 BATTERMAN #122 5294.10
1959 BATTERMAN #119 5292.76

1873 RUGER 2-107 5280.00
1854 McVEAN 1-29 5257.56
1942 BATTERMAN #122 5294.10
1959 BATTERMAN #119 5292.76

1873 RUGER 2-107 5280.00
1854 McVEAN 1-29 5257.56
1942 BATTERMAN #122 5294.10
1959 BATTERMAN #119 5292.76