

U.S. PUBLIC LAND SURVEY MONUMENT RECORD

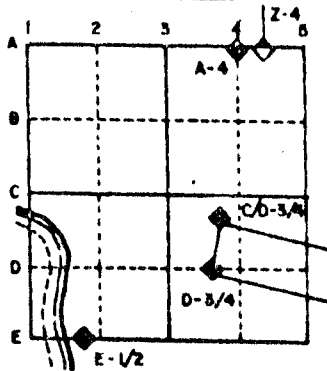
For Public Land Survey Corners in the
T. 2 N., R. 12 E.

CORNER CODE INDEX

	1	2	3	4	5	6	7	8	9	10	11	12	13	14	15	16	17	18	19	20	21	22	23	24	25
A																									
B																									
C	6																								
D																									
E																									
F																									
G	7																								
H																									
I																									
J																									
K																									
L	8																								
M																									
N																									
O																									
P	9																								
Q																									
R																									
S																									
T	30																								
U																									
V																									
W																									
X	31																								
Y																									
Z																									

PLACE MONUMENT SYMBOL (◆) AT PROPER LOCATION ON ABOVE INDEX

EXAMPLE



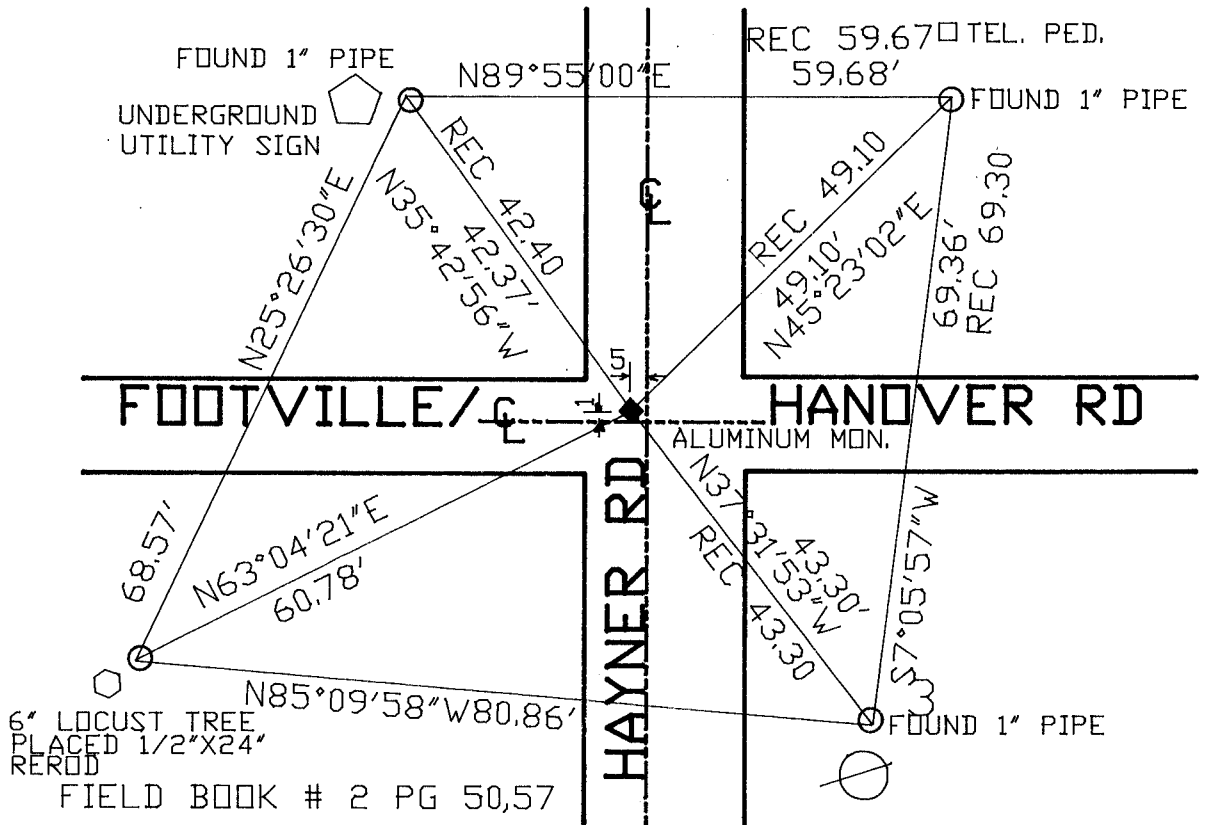
ROCK TWP
ROCK COUNTY WI

IF AVAILABLE
STATE PLANE COORDINATES

North (Y) _____ Eleve. (Z) _____
 East (X) _____ Zone _____
 Hor. Datum _____ Vert. Datum _____

◆ CORNER MONUMENT
 ○ WITNESS MONUMENT
 ALUM. MON.

BEARINGS ARE BASED ON: ASSUMED



MICROFILMED

SHEET ___ OF ___

CORNER CODE: E 11

(B) Describe any record evidence, monument evidence, occupational evidence, testimonial evidence or any other material evidence you considered, and whether the monument was found or placed.

1834 HARRISON. ORIGINAL GOVERNMENT SURVEYOR. SET POST & RAISED A MOUND. SHOWS A DISTANCE OF 2637.69 TO THE SE AND SW CORNERS OF SECTION 4.

1853 McVEAN VOL 1 PG 17. STATES NOTHING ABOUT THE MONUMENT. SHOWS A DISTANCE OF 5250.63 TO THE S 1/4 CORNER OF SECTION 9.

1975 SCHROEDER VOL 5 PG 56 CALLS FOR A 1" X 24" IRON PIPE IN BLACK TOP AND REFERENCED SAME.

1986 BARNES VOL 6 PG 363 FOUND 1" IRON PIPE. SHOWS THE FOLLOWING DISTANCES AND BEARINGS IN SECTION 9:

TO NE N89-27-29E 2656.31
S 1/4 S01-34-02E 5271.26

AND TO THE SOUTH QUARTER CORNER OF SECTION 33 JANESVILLE TOWNSHIP AS S01-04-29E 5408.31

FOUND 1" PIPE .2 DEEP. REPLACED WITH ALUMINUM MONUMENT.

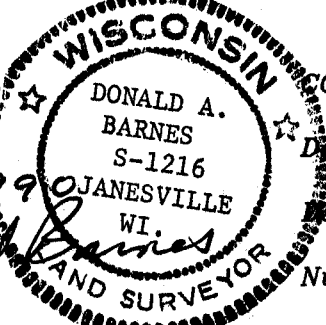
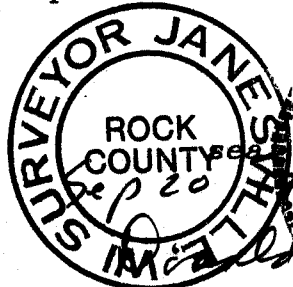
C) Was the corner restored through acceptance of (1) an obliterated evidence location, or, (2) a found perpetuated location?

ACCEPTED FOUND PERPETUATED LOCATION.

D) Describe any material discrepancy between the location of the corner as restored or reestablished and the location of that corner as previously restored or reestablished by distance and direction. Show the discrepancy on the plan view drawing under (a), above. Show the distances between the corner as previously restored or reestablished and (1) the corner as restored or reestablished, and (2) to at least 4 of the witness monuments shown on the drawing in (a), above.

(E) Was the corner reestablished through lost corner proportionate methods? If so, show the method, including the directions and distances to other public land survey corners used as evidence or used for proportioning the corner location.

I, Donald Barnes, hereby certify that the corner points as identified by the corner code index were, in a field survey on, JULY 6, 1989, established, re-established, monumented, re-monumented, recovered or restored as expressed below and in conformance with the regulations and rules as required in the current manual of survey instructions of the United States Department of Interior, Bureau of Land Management.



COUNTY SURVEYOR FILING DATA

Date of computer entry _____

Date microfilmed _____

Number of included sheets _____

CORNER CODE

AFFIX YOUR LAND SURVEYOR SEAL

E11