

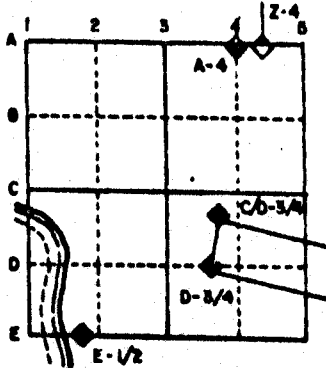
# U.S. PUBLIC LAND SURVEY MONUMENT RECORD

For Public Land Survey Corners in the  
T. 2 N., R. 12 E.

## CORNER CODE INDEX

1	2	3	4	5	6	7	8	9	10	11	12	13	14	15	16	17	18	19	20	21	22	23	24	25	
A																									
B																									
C	6																								
D		5																							
E			4																						
F				3																					
G					2																				
H																									
I	7																								
J		8																							
K			9																						
L				10																					
M					11																				
N						12																			
O							13																		
P								14																	
Q									15																
R										16															
S											17														
T												18													
U													19												
V														20											
W															21										
X																22									
Y																	23								
Z																		24							

### EXAMPLE



ROCK TWP  
ROCK COUNTY WI

### IF AVAILABLE STATE PLANE COORDINATES

NAD 27 North (Y) 246,232.58      Elevation (Z) 875.3  
East (X) 2,247,187.28      Zone \_\_\_\_\_  
Hor. Datum \_\_\_\_\_      Vert. Datum \_\_\_\_\_

PLACE MONUMENT SYMBOL (◆) AT PROPER  
LOCATION ON ABOVE INDEX

JANESVILLE PROJ.  
246,232.73  
2,247,187.30

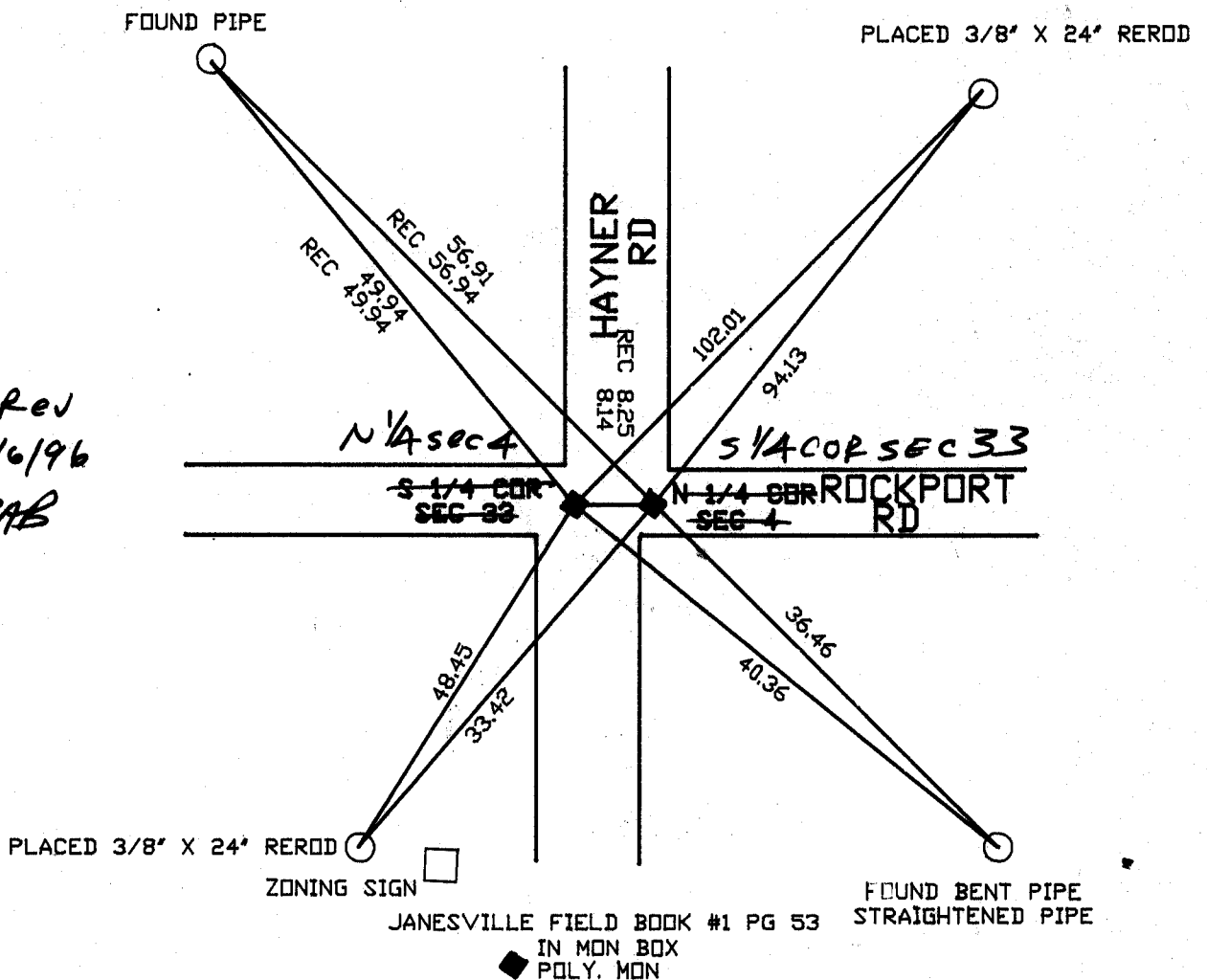
e.)

◆ CORNER MONUMENT

○ WITNESS MONUMENT

BEARINGS ARE BASED ON: ASSUMED

REV  
12/16/96  
DAB



**MICROFILMED**

SHEET \_\_\_ OF \_\_\_

CORNER CODE: **A 11**

(B) Describe any record evidence, monument evidence, occupational evidence, testimonial evidence or any other material evidence you considered, and whether the monument was found or placed.

1860 RUGER VOL 1 PG 126. SHOWS AS 1.98' WEST OF S 1/4 CORNER OF SECTION 33 JANESVILLE TWP. ALSO SHOWS 2628.78 TO NW CORNER AND 2613.6 TO NE CORNERS OF SECTION 4.

1932 SUNNY VOL 3 PG 209 DUG LARGE HOLE AND FOUND NOTHING.

1970 BATTERMAN JR. VOL 4 PG 436. DUG LARGE HOLE & FOUND NOTHING. SET 1" PIPE AND REFERENCED. SHOWS 8.25 TO S 1/4 CORNER OF SECTION 33.

1981 BARNES VOL 6 PG 186 FOUND MONUMENT BOX. SHOWS S89-59-25E 2634.68 TO NW CORNER AND N89-29-41E 2647.79 TO NE CORNER. SHOWS COORDINATES OF 246,231.69;2,247,178.99. DROVE PIPE DEEP AND PLACED POLY MONUMENT.

FOUND POLY MONUMENT.

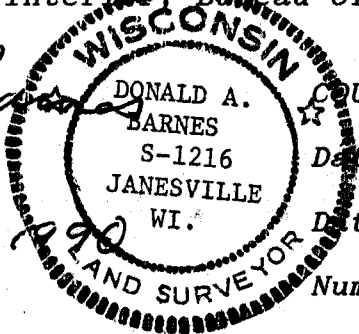
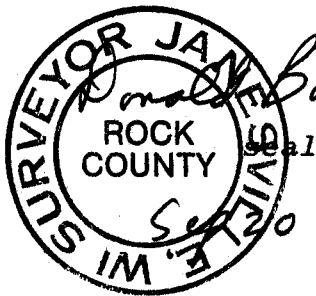
C) Was the corner restored through acceptance of (1) an obliterated evidence location, or, (2) a found perpetuated location?

ACCEPTED FOUND POLY MONUMENT.

D) Describe any material discrepancy between the location of the corner as restored or reestablished and the location of that corner as previously restored or reestablished by distance and direction. Show the discrepancy on the plan view drawing under (a), above. Show the distances between the corner as previously restored or reestablished and (1) the corner as restored or reestablished, and (2) to at least 4 of the witness monuments shown on the drawing in (a), above.

(E) Was the corner reestablished through lost corner proportionate methods? If so, show the method, including the directions and distances to other public land survey corners used as evidence or used for proportioning the corner location.

I, Donald Barnes, hereby certify that the corner points as identified by the corner code index were, in a field survey on, July 18, 1990, established, re-established, monumented, re-monumented, recovered or restored as expressed below and in conformance with the regulations and rules as required in the current manual of survey instructions of the United States Department of Interior Bureau of Land Management.



COUNTY SURVEYOR FILING DATA

Date of computer entry \_\_\_\_\_

Date microfilmed \_\_\_\_\_

Number of included sheets All  
CORNER CODE

AFFIX YOUR LAND SURVEYOR SEAL