

U.S. PUBLIC LAND SURVEY MONUMENT RECORD

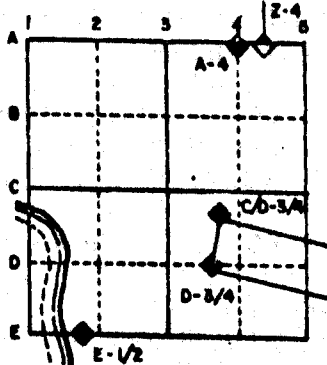
For Public Land Survey Corners in the
T. ___ N., R. ___ E.

CORNER CODE INDEX

	1	2	3	4	5	6	7	8	9	10	11	12	13	14	15	16	17	18	19	20	21	22	23	24	25
A																									
B																									
C	6																								
D		5																							
E			4																						
F				3																					
G					2																				
H	7																								
I		8																							
J			9																						
K				10																					
L					11																				
M						12																			
N	13																								
O		14																							
P			15																						
Q				16																					
R					17																				
S						18																			
T							19																		
U								20																	
V									21																
W										22															
X											23														
Y												24													
Z													25												
														26											
															27										
																28									
																	29								
																		30							
																			31						
																				32					
																					33				
																						34			
																							35		
																								36	

PLACE MONUMENT SYMBOL (◆) AT PROPER LOCATION ON ABOVE INDEX

EXAMPLE



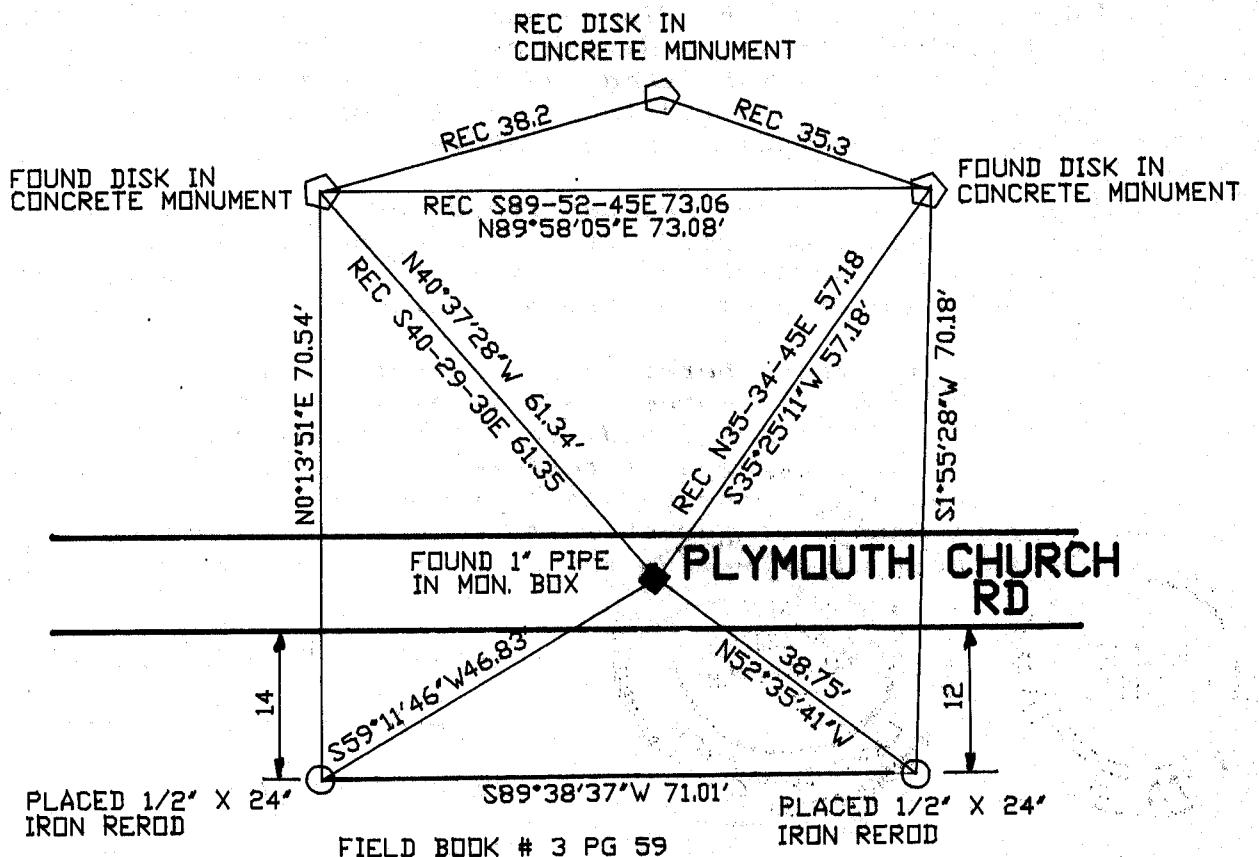
ROCK TWP
ROCK COUNTY WI

IF AVAILABLE
STATE PLANE COORDINATES

North (Y) _____ Elev. (Z) _____
 East (X) _____ Zone _____
 Hor. Datum _____ Vert. Datum _____

◆ CORNER MONUMENT ○ WITNESS MONUMENT

BEARINGS ARE BASED ON: ASSUMED



MICROFILMED

SHEET ___ OF ___

CORNER CODE: **VII**

(B) Describe any record evidence, monument evidence, occupational evidence, testimonial evidence or any other material evidence you considered, and whether the monument was found or placed.

- 1834 HARRISON ORIGINAL GOVERNMENT SURVEYOR. FIELD NOTES - QUARTER SECTION CORNER WHITE OAK 12 N22W 33 AND WHITE OAK 12 S2W 41. MEASURED 2653.20 TO THE SE AND SW CORNERS OF SECTION 28.
- 1851 McVEAN VOL 1 PG 3 SHOWS 2650.56 TO SE CORNER OF SECTION 28.
- 1855 VOL 1 PG 30 SHOWS 2772 TO NW CORNER OF SECTION 33, 2772 TO NE CORNER OF SECTION 33, AND 2641.32 TO CENTER OF SECTION 33.
- 1856 CHURCH VOL 1 PG 65. SHOWS 2651.22 TO NW CORNER OF SECTION 33, 2651.88 TO NE CORNER OF SECTION 33, AND 2636.04 TO CENTER OF SECTION 33.
- 1880 LEE VOL 2 PG 310 FOUND STAKE AT CORNER. SHOWS 1346.99 TO THE E 1/16 th CORNER OF THE SW 1/4 OF SECTION 28. ALSO ESTABLISHED PROPERTY CORNERS ALONG THE SOUTH LINE OF THE SW 1/4 OF SECTION 28.
- 1906 KERCH VOL 3 PG 39 FOUND STONE, DROVE 1 1/2" GAS PIPE 40" LONG WITH STONE ON WEST SIDE. FOUND STONE 3" DEEP AND STUMP OF N.W. BEARING TREE. SHOWS A DISTANCE OF 2651.16' TO SE CORNER OF SECTION 28.
- 1964 BATTERMAN VOL 4 PG 205 FOUND PIPE AT CORNER. REFERENCED SAME.
- 1966 BATTERMAN JR. VOL 4 PG 288 SHOWS REFERENCE TIES.

FOUND MONUMENT BOX.

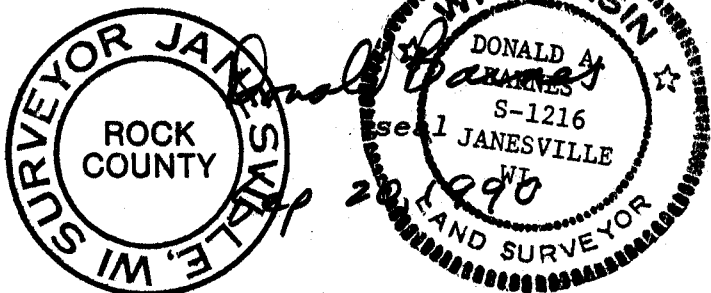
C) Was the corner restored through acceptance of (1) an obliterated evidence location, or, (2) a found perpetuated location?

ACCEPTED FOUND MONUMENT.

D) Describe any material discrepancy between the location of the corner as restored or reestablished and the location of that corner as previously restored or reestablished by distance and direction. Show the discrepancy on the plan view drawing under (a), above. Show the distances between the corner as previously restored or reestablished and (1) the corner as restored or reestablished, and (2) to at least 4 of the witness monuments shown on the drawing in (a), above.

(E) Was the corner reestablished through lost corner proportionate methods? If so, show the method, including the directions and distances to other public land survey corners used as evidence or used for proportioning the corner location.

I, Donald Barnes, hereby certify that the corner points as identified by the corner code index were, in a field survey on, July 20, 1990, established, re-established, monumented, re-monumented, recovered or restored as expressed below and in conformance with the regulations and rules as required in the current manual of survey instructions of the United States Department of the Interior Bureau of Land Management.



AFFIX YOUR LAND SURVEYOR SEAL

COUNTY SURVEYOR FILING DATA

Date of computer entry _____

Date microfilmed _____

Number of included sheets _____

CORNER CODE

V//