

U.S. PUBLIC LAND SURVEY MONUMENT RECORD

For Public Land Survey Corners in:

WI ADMINISTRATIVE CODE A-E 7.08 REQUIREMENT

T. 1 N., R. 10 E

CORNER CODE INDEX

A	2	3	4	5	6	7	8	9	10	11	12	13	14	15	16	17	18	19	20	21	22	23	24	25
B																								
C	6																							
D																								
E																								
F	1																							
G		8																						
H			9																					
J																								
K																								
L	18																							
M		11																						
N			16																					
O																								
P	19																							
Q		20																						
R			21																					
S																								
T	30																							
U		29																						
V			28																					
W																								
X																								
Y																								
Z																								

AVON TWP
ROCK COUNTY WI

IF AVAILABLE
ROCK COUNTY COORDINATES PREFERRED

North 223,234.06 Elev. _____

East 429,987.76

Hor. Datum _____ Vert. Datum _____

LATITUDE _____ ELLIPS. HT. _____

LONGITUDE _____

GPS (X) _____ TRAVERSE (X) _____

BASED ON THE FOLLOWING CONTROL:

NPWAK TWP CONTROL

PLACE MONUMENT SYMBOL AT PROPER LOCATION ON ABOVE INDEX

CORNER MONUMENT

WITNESS MONUMENT

(a)

BEARINGS ARE BASED ON:

OBSERVATION SHEET 42

FIELD BOOK _____ PAGE # _____

SHEET 1 OF 3

SHOW A PLAN VIEW DRAWING DEPICTING THE CORNER MONUMENT AND SURROUNDING PHYSICAL FEATURES, INCLUDING THE EXCAVATION AREA AND DEPTH.

PLANNING & ZONING COMMITTEE ADOPTED THE ABOVE FORM ON 12/2/1982

CORNER CODE J-23

AV552

(B) Describe any record evidence, monument evidence, occupational evidence, testimonial evidence or any other material evidence you considered, and whether the monument was found or placed.

- 1834 HARRISON EAST BETWEEN SECS 12 & 13
2640 TEMPY 1/4 P & ENTER MARSH
5306.4 INT. E BDY. 13.2' S OF P. LAND 1ST 1/2 LEVEL 2ND RATE
TIMBER BURR O, 2ND 1/2 LEVEL & WET 3RD RATE
WEST COR. WEST BET 12 & 13
2653.2 QUARTER SEC COR. BURR O 12 N47E 59.4' (90 LKS),
BURR O 12 N80W 231' (350 LKS) BURR O 12, BURR
O 12 } MARKED
5306.4 SEC COR.
- 1871 RUGER VOL 2 PG 65 FD OLD STAKE & NE B.T. & WHERE
STUMP OF NW B.T. HAD FALLEN DOWN SHOULD READ 310
INSTEAD OF 350. DROVE STATE DEEP & PUT ON TOP OF IT
LIMESTONE 10X4X4 VAR 6-14 2702.7 TO SE COR SEC 12 &
VAR 6-14 2665.74 TO SW COR SEC 12, VAR 6-25 2658.48 TO
CENTER SEC 12.
- 1871 RUGER VOL 2 PG 73 SEE SEC 12 AVON PAGE 40. USED TO
SUBDIVIDE SEC 13. VAR 6-00 2657.16 TO CENTER SEC 13 &
VAR 6-00 5306.07' TO S 1/4 COR SEC 13.

DUG LARGE 4' DEEP HOLE WITH BACKHOE. FD ONLY WOOD POST
10"X3.5' AND ABOUT 2.5' SOUTH A METAL FENCE POST IN
HORIZONTAL POSITION, ABOUT 10' TO THE WEST A SMALL BUNDLE
OF BURIED BARB WIRE, & SMALL PIECE OF VERY OLD BARBWIRE
ABOUT 1 SOUTH OF THE POST. DID NOT FIND ANY STONES IN THE
HOLE. REPLACED WOOD POST WITH POLY. MON. PLACED 2
MAGNETS DEEP ALONG SIDE POLY. & CARSONITE ON SOUTH SIDE
OF POLY.

C) Was the corner restored through acceptance of (1) an obliterated evidence location, or, (2) a found perpetuated location?

ACCEPTED WOOD POST. THIS IS IN HARMONY WITH LINE AND
PRORATION WITH RUGER'S MEASUREMENTS TO THE SOUTH &
NORTH, & THE SOUTH LINE OF SEC 12.

D) Describe any material discrepancy between the location of the corner as restored or reestablished and the location of that corner as previously restored or reestablished by distance and direction. Show the discrepancy on the plan view drawing under (a), above. Show the distances between the corner as previously restored or reestablished and (1) the corner as restored or reestablished, and (2) to at least 4 of the witness monuments shown on the drawing in (a), above.

NONE

(E) Was the corner reestablished through lost corner proportionate methods? If so, show the method, including the directions and distances to other public land survey corners used as evidence or used for proportioning the corner location.

NO

I, Donald Barnes, hereby certify that the corner location as identified by the corner code index was determined by me under my direction and control and that this U.S. Public Land Survey Monument Record is correct and complete to the best of my knowledge and belief.

Seal

Emboss

7-02-03

SHEET 1 OF 3

CORNER CODE

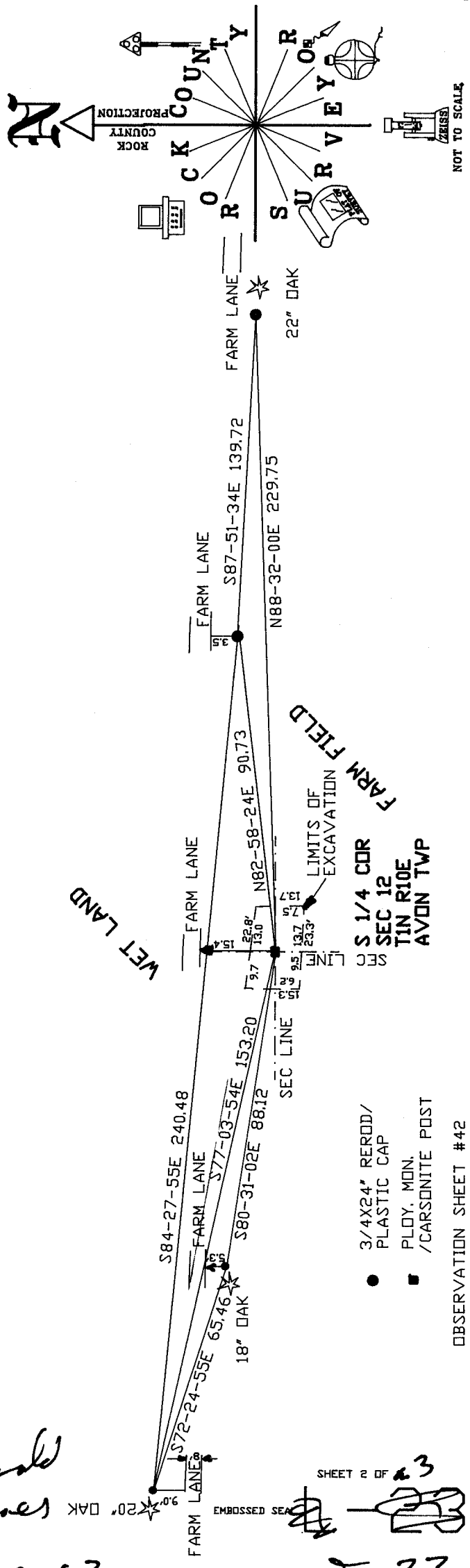
J
E-23

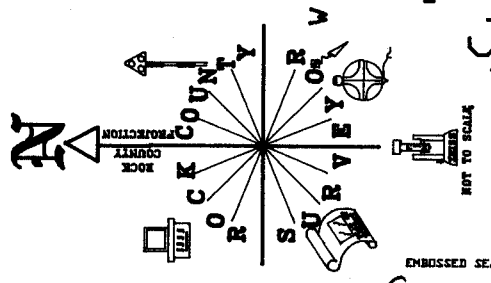
Donald Barnes

7-02-03

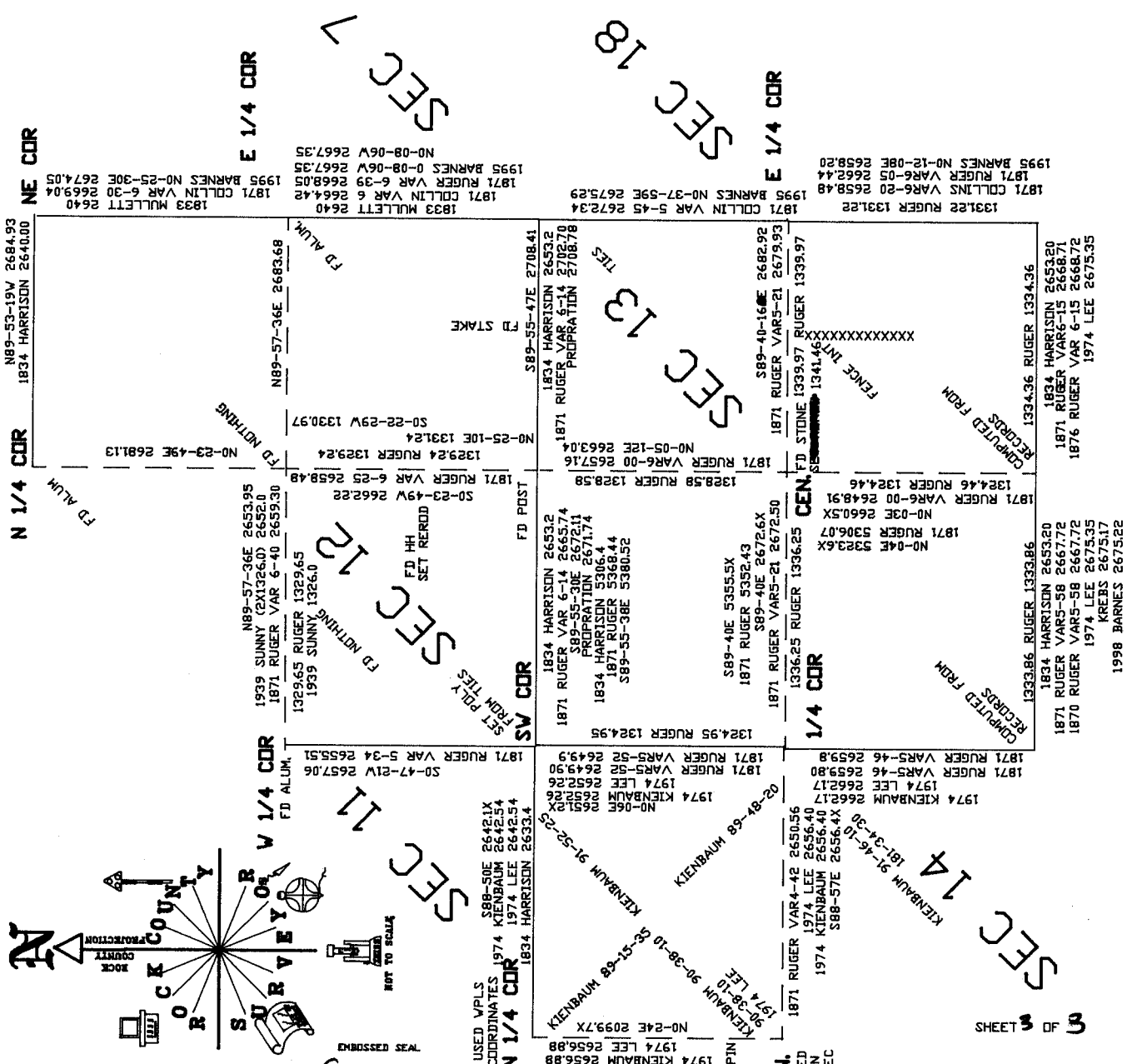
SHEET 2 OF 23

J-23





Donald Barnes
7-02-03



JD-23