

Paper weight-110# (minimum)

Black nonfading ink required

U.S. PUBLIC LAND SURVEY MONUMENT RECORD

For Public Land Survey Corners In:

WI ADMINISTRATIVE CODE A-E 7.08 REQUIREMENT

T. 1 N. R. 10 E. 4th P.M.

REV 10/23/2004

USMONREC.DWG

CORNER CODE INDEX

	1	2	3	4	5	6	7	8	9	10	11	12	13	14	15	16	17	18	19	20	21	22	23	24	25
A																									
B																									
C	6																								
D																									
E																									
F																									
G	7																								
H																									
J																									
K	18																								
L																									
M																									
N																									
O	19																								
P																									
Q																									
R																									
S																									
T	30																								
U																									
V																									
W																									
X	31																								
Y																									
Z																									

AVON TWP

ROCK COUNTY WI

IF AVAILABLE
ROCK COUNTY COORDINATES PREFERRED

North _____ Elev. _____

East _____

Hor. Datum _____ Vert. Datum _____

LATITUDE _____ ELLIPS. HT. _____

LONGITUDE _____

NAD83(91) _____ NETWORK ADJ. YR _____

GPS (X) _____ TRAVERSE (X) _____

BASED ON THE FOLLOWING CONTROL:

PLACE MONUMENT SYMBOL AT PROPER LOCATION ON ABOVE INDEX

CORNER MONUMENT WITNESS MONUMENT

BEARINGS ARE BASED ON: _____

FIELD BOOK _____ PAGE # _____ SHEET 1 OF 4

SHOW A PLAN VIEW DRAWING DEPICTING THE CORNER MONUMENT AND SURROUNDING PHYSICAL FEATURES, INCLUDING THE EXCAVATION AREA AND DEPTH.

PLANNING & ZONING COMMITTEE ADOPTED THIS FORM ON 12/2/1982

CORNER CODE X-13

AV617 E1/4 SEC33

(B) Describe any record evidence, monument evidence, occupational evidence, testimonial evidence or any other material evidence you considered, and whether the monument was found or placed.

1833 HARRISON NORTH BET 33 & 34

924 LEAVE TIMBER & ENTER WET BOTTOM

2640 SET POST FOR 1/4 SEC COR RAISED A MOUND

5280 SET POST FOR COR TO SEC 27,29,33,34 RAISED A MOUND LAND = THE FIRST 924' ARE A PART OF A VARY HANDSOME GROVE OF BURR WHITE & RED OAK THE REMANINDER OF THE MILE IS AS DESCRIBED BEFORE- CONSISTING OF CREEK BOTTOM

1854 Mc VEAN VOL 1 PG 29 STATES NOTHING ABOUT MON. USED TO SUBDIVIDE SEC 34. VAR 6-1/2 TO NE COR SEC 33. 5257.56 FROM SE TO NE CORNERS SEC 33

1873 RUGER VOL 2 PG 107 CORNER LOST. EST. IT FROM SEC CORS DROVE LARGE OAK STAKE DEEP. VAR 6-59 2640 TO NE COR SEC 33, VAR 6-59 2640.00 TO SE COR SEC 33, 2624.82 TO CENTER OF SEC 33, 5258.55 TO W 1/4 COR SEC 33.

1942 BATTERMAN #0122 MAP SHOWS DRAINAGE DITCH NEAR COR. 5294.10 FROM SE TO NE CORNERS OF SEC 33

1959 BATTERMAN #00119 SET SPIKE 46.5 N OF 1/4 COR (COR IN DITCH) NO-07-30W 2646.38 TO FD 1 1/2 PIPE @ NE COR SEC 33, SO-07-30E 2646.38 TO SE COR SEC 33. ANGLE @ NE COR SEC 33 FROM NE COR SEC 34 TO E 1/4 COR SEC 33 IS 87-51-59, ANGLE @ SE COR SEC 33 FROM E 1/4 COR SEC 33 TO FD PIPE @ NELSON RD IS 91-32-00, E 1/4 COR SEC 33 ON LINE WITH NE & SE CORNERS OF SEC 33, 1328.13 TO SET 5/8" PIN AT SW COR E 1/2 NW 1/4 SEC 34, & ANGLE OF 88-10-08 FROM SET 5/8" PIN AT SW COR E 1/2 NW 1/4 SEC 34 TO SE COR SEC 33, SET CONCRETE MONUMENTS ON N/S 1/16TH LINE IN SEC 34.

1966 SHIMEALL #13848 STATES NOTHING ABOUT MON. S88-12-30E 1328.08 TO A PIN WHICH IS 40.00' WEST OF A STONE, SO-02-30E 89.20 TO A PIPE, E 1/4 COR SEC 33 SO-02-30E 1323.83 TO A PIPE. CALLS FOR E 1/4 COR SEC 33 AS PIPE WHICH IS 34' SOUTH OF CENTER LINE OF DITCH. ANGLE @ 88-10-00 E 1/4 COR SEC 33 FROM SET PIN TO SE COR SEC 33.

1937 & 1950 AIRPHOTOS SHOW A NETWORK OF DRAINAGE DITCHES. THE NETWORK HAS SINCE BEEN GREATLY EXPANDED. THE AREA NEAR THE CORNER AND THE SIXTEENTH CORNERS TO THE NORTH AND SOUTH HAVE BEEN DISTURBED. SEARCHED & DID NOT FIND ANY MONUMENTS. SEARCHED FOR SHIMEALL'S 1966 PIPES ALONG E/W DRAINAGE DITCH, RECORD PIPES @ 1/16TH CORNERS ON EAST LINE OF SEC 33,

ESTABLISHED CORNER IN HARMONY WITH RECORD DISTANCES & ANGLES TO NE & SE CORNERS OF SEC 33 AND THE MONUMENTS FOUND ALONG NELSON ROAD. SET POLY MONUMENT WITH TOP 0.4' ABOVE GRADE & 2 MAGNETS NEAR BASE. PLACED CARSONITE POST ON SE SIDE OF POLY. MON IS ON LINE WITH CENTER OF DRAINAGE DITCH PROJECTED FROM THE SOUTH.

C) Was the corner restored through acceptance of (1) an obliterated evidence location, or, (2) a found perpetuated location?

ESTABLISHED THROUGH ACCEPTANCE OF OLBITERATED EVIDENCE LOCATION.

SHEET 1 OF 4
CORNER CODE X-13

Ronald Barnes
Apr 24 2007

AV617

3
D) Describe any material discrepancy between the location of the corner as restored or reestablished and the location of that corner as previously restored or reestablished by distance and direction. Show the discrepancy on the plan view drawing under (a), above. Show the distances between the corner as previously restored or reestablished and (1) the corner as restored or reestablished, and (2) to at least 4 of the witness monuments shown on the drawing in (a), above.

NONE

(E) Was the corner reestablished through lost corner proportionate methods? If so, show the method, including the directions and distances to other public land survey corners used as evidence or used for proportioning the corner location.

YES. IN 1873 RUGER (VOL 2 PG 107) DECLARED CORNER LOST & ESTABLISHED IT FROM SEC CORNS. IN 1959 BATTERMAN ESTABLISHED CORNER FORM THE NE & SE CORNERS OF SEC 33.

I, **Donald Barnes**, hereby certify that the corner location as identified by the corner code index was determined by me under my direction and control and that this U.S. Public Land Survey Monument Record is correct and complete to the best of my knowledge and belief.

Seal
Donald Barnes
April 24, 2007
Emboss

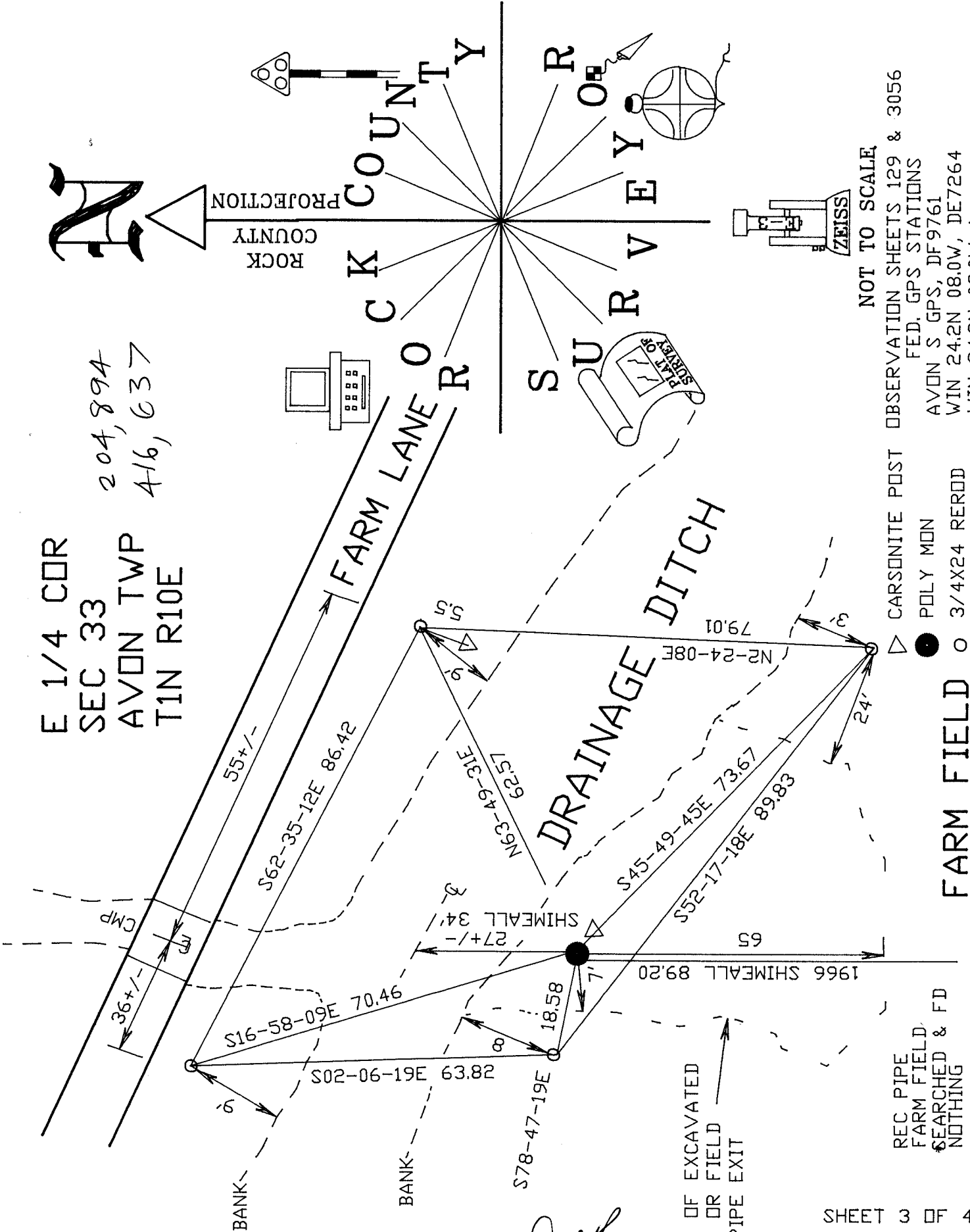
SHEET 2 OF 4

CORNER CODE **X-13**

A.E. 7.08 REQUIREMENT

E 1/4 COR
 SEC 33
 AVON TWP
 T1N R10E

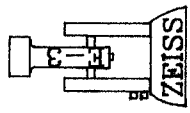
204,894
 416,637



ROCK COUNTY
 PROJECTION

COUNTY

RUSSELL COUNTY
 SURVEY



NOT TO SCALE
 OBSERVATION SHEETS 129 & 3056
 FED. GPS STATIONS
 AVON S GPS, DF9761
 WIN 24.2N 08.0W, DE7264
 WIN 24.2N-08.0W A

CARSONITE POST
 POLY MON
 3/4X24 REROD

FARM FIELD

REC PIPE
 FARM FIELD
 SEARCHED & FD
 NOTHING

Rudolf Barnes
 EMBOSSED SEAL
 APRIL 24, 2007

SHEET 3 OF 4

X-13

FD 1' PIPE
0.7' DEEP
BY SHORT
METAL POST

NE COR
SEC 33

1994 COMBS 1328.78
1959 BATTERMAN 1328.77

1/16TH COR

AVON TWP
T1N R10E

NELSON RD

S0-12-17E 2647.01
1959 BATTERMAN 2646.38
RUGER VAR6-59 2640.00
1833 HARRISON 2640.00

1854 McVEAN VAR 6- 1/2

1959 BATTERMAN 87-51-59

COMPUTED FROM
REC 2607

REC 0.00	0.20	#4001
REC 33.00	32.74	#4003
REC 33.00	33.06	#3054
REC 40.00	39.67	#4005
REC 0	0.02	#3052
REC 0	.03	#3050

#4001 FD CONC MON.
/DISK STAMPED
1/8 LINE
R/W LINE

#4003 FD CONC. MON.
/DISK STAMPED
PC OF OLD
CURVE

#3054 FD PIN & CONC.
HOR ON WEST
SIDE
[INT OF ORIG
R/W LINE &
NEW R/W]

FD CONC. MON
BRASS DISK
[PC OF NEW
CURVE]

#3052 FD METAL
SOUND
1' WEST OF
CENTER OF PVMT

1959 BATTERMAN 842.92
1959 BATTERMAN 6561
S11-22-07E 169.70
169.93
1959 BATTERMAN 168-47
1959 BATTERMAN 191-13
191-07-29
1959 BATTERMAN 178-25-16
178-16-30
1959 BATTERMAN 178-25-16
178-16-30
1959 BATTERMAN 181-37-04
181-43-30
1959 BATTERMAN 232.25
232.24
1959 BATTERMAN 344.17
344.22
S00-14-39E 344.17
S1-49-23E 232.24

N00-12-17W 5294.01
1959 BATTERMAN 5292.76
1941 BATTERMAN 5294.10
1873 RUGER 5280.00
1854 McVEAN 5257.56

1959 BATTERMAN 91-50-42
1959 BATTERMAN 91-49-52

S88-21-36E 1327.88
1966 SHIMEALL 1328.08
1959 BATTERMAN 1328.13

1966 SHIMEALL 1368.08
S88-21-35E 1367.85

S88-20-53E 39.97
1995 COMBS 40.01
1966 SHIMEALL 40.00
1959 BATTERMAN 40.00

E 1/4 COR
SEC 33
POLY

S0-12-17E 2647.01
1959 BATTERMAN 2646.38
RUGER VAR6-59 2640.00
1833 HARRISON 2640.00

1966 SHIMEALL 1323.83

1959 BATTERMAN 88-10-08
1966 SHIMEALL 88-10-00
1966 SHIMEALL 88-09-19
1959 BATTERMAN 91-31-41
1959 BATTERMAN 91-32-00

1854 McVEAN VAR 6-1/2

1959 BATTERMAN 91-49-10
1959 BATTERMAN 88-10-08
1959 BATTERMAN 88-10-00
1959 BATTERMAN 88-09-19
1959 BATTERMAN 88-10-08
1959 BATTERMAN 88-10-00
1959 BATTERMAN 88-09-19

1977 LEUBERGER 2639.44
1959 BATTERMAN 2640.16
S0-11-30E 2639.65
1959 BATTERMAN 2639.44
1959 BATTERMAN 2640.16
S0-11-30E 2639.65
1959 BATTERMAN 2639.44
1959 BATTERMAN 2640.16
S0-11-30E 2639.65
FD 3/4 PIN
WITH TOP PART OF
CONC./DISK ON LAYING
ON WEST SIDE OF PIN
#3050
FD METAL
SOUND
1957 BATTERMAN 5280

SE COR
SEC 33

FD ALUM. & SHEET 4 OF 4
TIES

S88-40-36E 1327.06
1995 COMBS 1327.32
1977 BATTERMAN 1327.07
1959 BATTERMAN 1327.40
1957 BATTERMAN 1357.8
1941 BATTERMAN 1327.8

FD 2' PINCHED PIPE
3.6' NORTH OF
SOUTH PVMT EDGE
ON LINE EAST EDGE
OF PVMT PROJECTED
SOUTH

X-13
Donald Barnes
4/24/07