

U.S. PUBLIC LAND SURVEY MONUMENT RECORD

For Public Land Survey Corners In:

WI ADMINISTRATIVE CODE A-E 7.08 REQUIREMENT

T. N. R. E.

CORNER CODE INDEX

1	2	3	4	5	6	7	8	9	10	11	12	13	14	15	16	17	18	19	20	21	22	23	24	25	
A																									A
B																									B
C																									C
D																									D
E																									E
F																									F
G																									G
H																									H
J																									J
K																									K
L																									L
M																									M
N																									N
O																									O
P																									P
Q																									Q
R																									R
S																									S
T																									T
U																									U
V																									V
W																									W
X																									X
Y																									Y
Z																									Z

 AVON TWP
ROCK COUNTY WI

IF AVAILABLE
ROCK COUNTY COORDINATES PREFERRED

North _____ Elev. _____

East _____

Hor. Datum _____ Vert. Datum _____

LATITUDE _____ ELLIPS. HT. _____

LONGITUDE _____

GPS (X) _____ TRAVERSE (X) _____

BASED ON THE FOLLOWING CONTROL:

PLACE MONUMENT SYMBOL AT PROPER LOCATION ON ABOVE INDEX

CORNER MONUMENT WITNESS MONUMENT

BEARINGS ARE BASED ON: _____

FIELD BOOK _____ PAGE # _____ SHEET 1 OF 2

SHOW A PLAN VIEW DRAWING DEPICTING THE CORNER MONUMENT AND SURROUNDING PHYSICAL FEATURES, INCLUDING THE EXCAVATION AREA AND DEPTH.

PLANNING & ZONING COMMITTEE ADOPTED THE ABOVE FORM ON 12/2/1982

CORNER CODE P13

AV577

(B) Describe any record evidence, monument evidence, occupational evidence, testimonial evidence or any other material evidence you considered, and whether the monument was found or placed.

1879 RUGER VOL 2 PG 252 FOUND LIMESTONE ON COR. IT IS 31.02' FROM COR FENCE POST E OF ROAD & 28.05' FROM COR FENCE POST ON W OF ROAD & IN LINE WITH FENCES RUNNING E & W. VAR 3-56 2632.74 TO CENTER OF 22 & 2677.29' TO NW COR SEC 22.

1979 BARNES VOL 5 PG 557 & 558 FORMER COUNTY SURVEYOR DUG & FOUND NOTHING. SET ALUM. MON. AT INT. OF LINE FROM NW COR & W 1/16TH COR OF THE NW 1/4 {FD STAKE SURROUNDED BY 4 L.S.} & A LINE FROM THE CENTER & THE S 1/16TH COR OF THE NW 1/4 SEC 22. SB7-17-27E 1318.09 TO 1/16TH COR, S1-12-57W 2663.49 TO SW COR, N1-20-36E 1341.54 TO 1/16TH COR.

FD ALUM. MON. & PIN. THE ALUM IS ABOUT 27.5' {RUGER 28.1} EAST OF N/S FENCE LINE & 30' {RUGER 31.0'} WEST OF N/S FENCE. THE PIN IS ABOUT 3.0 EAST OF ALUM. MON.

C) Was the corner restored through acceptance of (1) an obliterated evidence location, or, (2) a found perpetuated location?

ACCEPTED FD ALUM. MON.

D) Describe any material discrepancy between the location of the corner as restored or reestablished and the location of that corner as previously restored or reestablished by distance and direction. Show the discrepancy on the plan view drawing under (a), above. Show the distances between the corner as previously restored or reestablished and (1) the corner as restored or reestablished, and (2) to at least 4 of the witness monuments shown on the drawing in (a), above.

THE PIN SHOWN IN DRAWING WAS USED BY THOM IN 1979. THE PIN IS ON LINE WITH THE SE & NE CORNERS OF SEC 21 & MIDWAY BETWEEN THOSE CORNERS.

(E) Was the corner reestablished through lost corner proportionate methods? If so, show the method, including the directions and distances to other public land survey corners used as evidence or used for proportioning the corner location.

I, Donald Barnes, hereby certify that the corner location as identified by the corner code index was determined by me under my direction and control and that this U.S. Public Land Survey Monument Record is correct and complete to the best of my knowledge and belief.

Seal


Emboss

SHEET 1 OF 2

11-29-01

CORNER CODE **P-13**

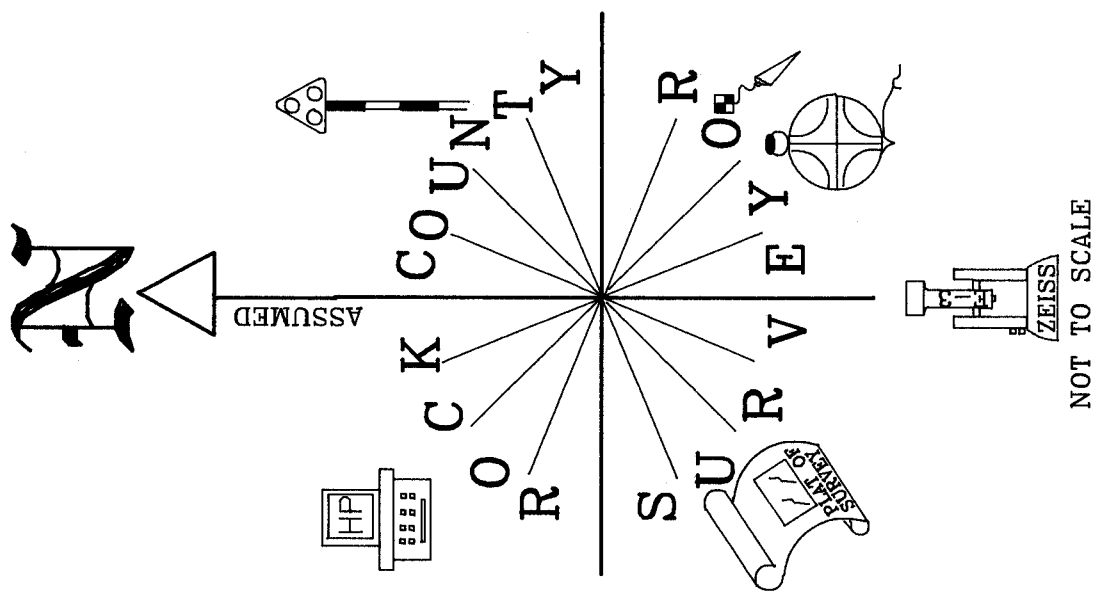
A.E. 7.08 REQUIREMENT

NE CDR
SEC 21
FD 1" PIPE
IN MON BOX
1979 BARNES 1340.74
NO-03-43E 1340.80
RUGER 1338.65

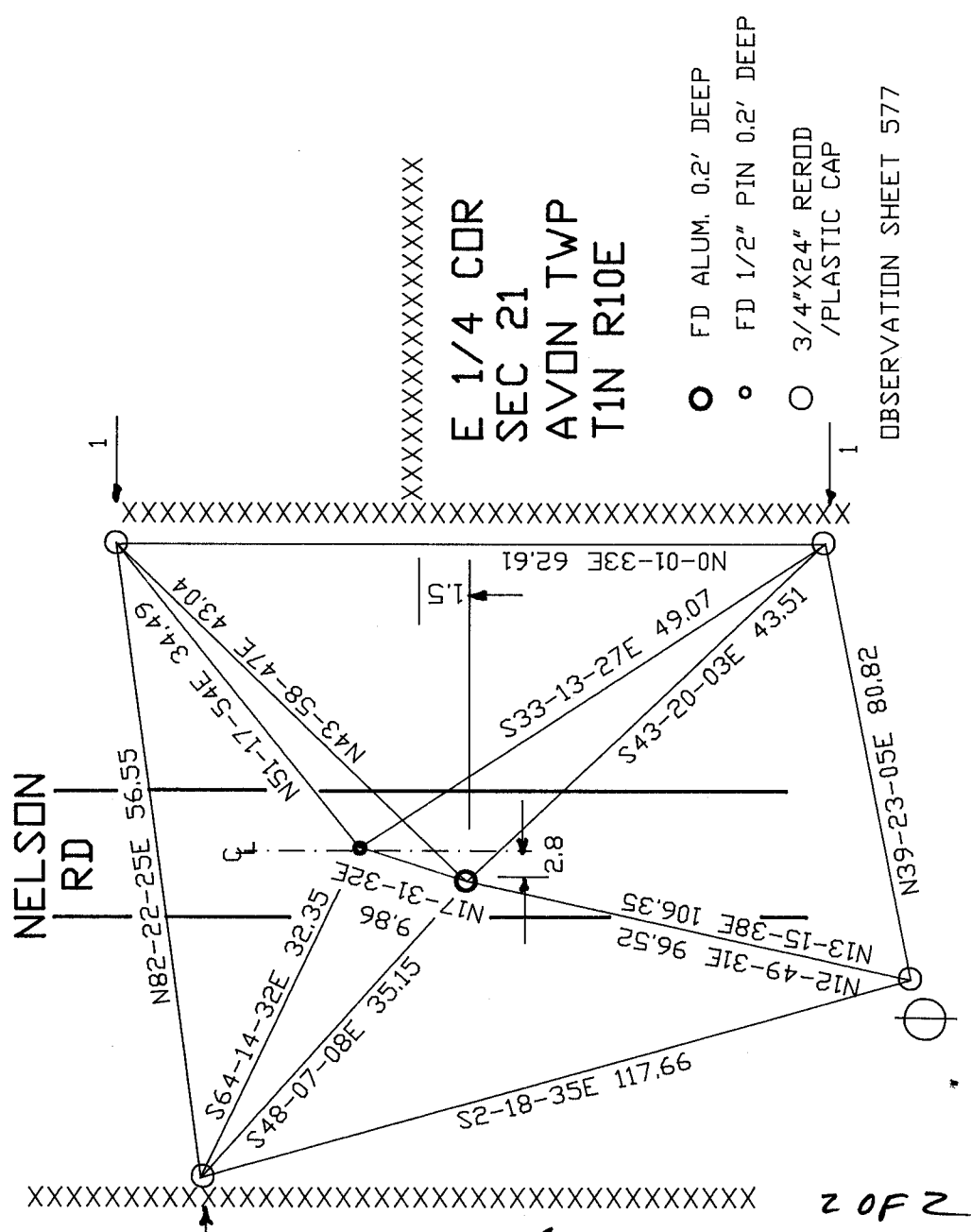
180+00-00

FD ALUM & PIN
E 1/4 CDR
SEC 21
1979 THOM 2672.89
PIN NO-00-13V 2672.95

FD R/R SPIKE
SE CDR
SEC 21
1979 BARNES 2663.49
1994 COMBS 2663.30
S0-04-03E 2663.54



NOT TO SCALE



Paul Barnes
EMBOSSSED
SEAL

11-29-01

P-13

2 OF 2