

# U.S. PUBLIC LAND SURVEY MONUMENT RECORD

For Public Land Survey Corners in the

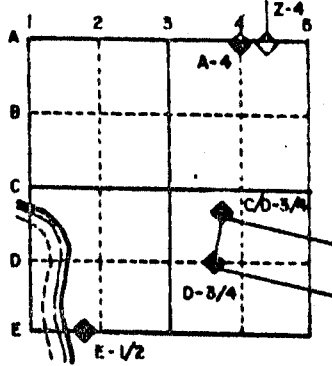
T. / N., R. / E.

## CORNER CODE INDEX

1	2	3	4	5	6	7	8	9	10	11	12	13	14	15	16	17	18	19	20	21	22	23	24	25	
A																									
B																									
C	6																								
D		5																							
E			4																						
F				3																					
G					2																				
H																									
I																									
J	7																								
K		8																							
L			9																						
M				10																					
N					11																				
O						12																			
P							13																		
Q								14																	
R									15																
S										16															
T											17														
U												18													
V													19												
W														20											
X															21										
Y																22									
Z																	23								
																		24							
																			25						
																				26					
																					27				
																						28			
																							29		
																								30	
																									31
																									32
																									33
																									34
																									35
																									36

PLACE MONUMENT SYMBOL (◆) AT PROPER LOCATION ON ABOVE INDEX

### EXAMPLE



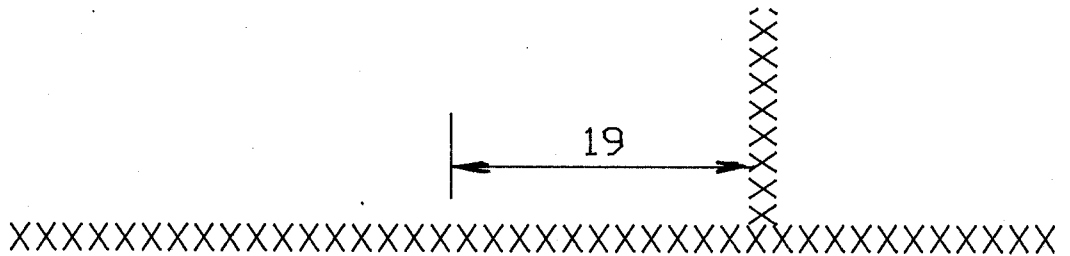
AVON TWP  
ROCK COUNTY WI

IF AVAILABLE  
STATE PLANE COORDINATES

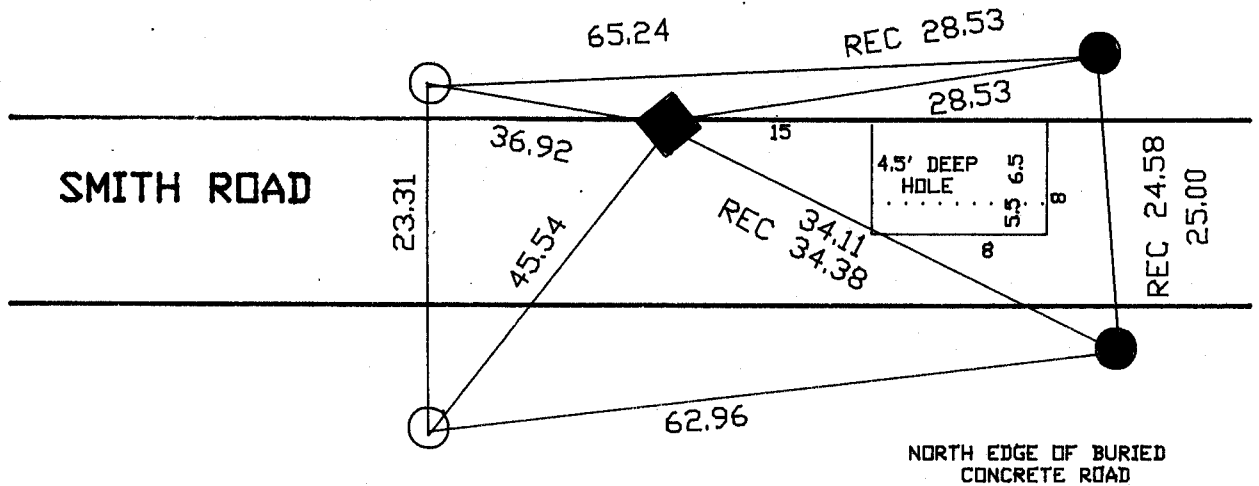
North (Y) \_\_\_\_\_ Eleve. (Z) \_\_\_\_\_  
 East (X) \_\_\_\_\_ Zone \_\_\_\_\_  
 Hor. Datum \_\_\_\_\_ Vert. Datum \_\_\_\_\_

◆ CORNER MONUMENT

○ WITNESS MONUMENT



BEARINGS ARE BASED ON:



● FOUND 1' PIPE  
○ 3/4 REBAR

FIELD BOOK #2 PG 62

**MICROFILMED**

SHEET \_\_\_ OF \_\_\_

CORNER CODE: J3

(B) Describe any record evidence, monument evidence, occupational evidence, testimonial evidence or any other material evidence you considered, and whether the monument was found or placed.

- 1834 (JANUARY) HARRISON ORIGINAL GOVERNMENT SURVEYOR. QUARTER SECTION CORNER. RED OAK 10 N86W 574', RED OAK 10 N84E 330'. CALLS FOR 2579.94 TO SW CORNER AND 2645.94 TO SE CORNERS OF SECTION 7.
- 1852 McVEAN VOL 1 PG 9 USED TO SUBDIVIDE SECTION 7. STATES NOTHING ABOUT THE CORNER. CALLS FOR 2623.50 TO THE SW CORNER, 2640 TO THE SE CORNER, 2654.52 TO THE CENTER OF SECTION 7, AND 5317.62 TO THE N 1/4 CORNER OF SECTION 7.
- 19?? KERCH VOL 3 PG 19 CORNER LOST. SET PART OF GRADE BAR. CALLS FOR 2610.50 TO SW CORNER AND 2665.1 TO SE CORNER OF SECTION 7.
- 1977 BARNES VOL 5 PG 300 FOUND GRAD BAR 1' DEEP AND SET ALUMINUM MONUMENT. MONUMENT IS 19' WEST OF N/S FENCE ON NORTH SIDE OF ROAD.
- 1986 TALARCZYK PLAT OF SURVEY. FOUND ALUMINUM MONUMENT. CALLS FOR 2665.62 TO FOUND STONE AT CENTER OF SECTION 7 AND AN ANGLE OF 89-44-57 FROM THE CENTER TO THE SE CORNER OF SECTION 7. ALSO CALLS FOR AN ANGLE OF 90-12-35 FROM THE E 1/4 CORNER OF SECTION 7 TO THE S 1/4 CORNER OF SECTION 7.
- 1992 SCHNEEBERGER. TIE SHEET CALLS FOR AN ALUMINUM MONUMENT WITH THE TOP 1' BROKE OFF. REFERENCED SAME.

FOUND ALUMINUM MONUMENT WITH TOP 1' BROKE OFF. MONUMENT IS 1' SOUTH OF THE NORTH EDGE OF THE PAVEMENT. DUG AT McVEANS PRORATED RECORD DISTANCE THAT FITS AN OLD N/S FENCE. FOUND OLD CONCRETE ROAD BUT NO SURVEY MONUMENT.

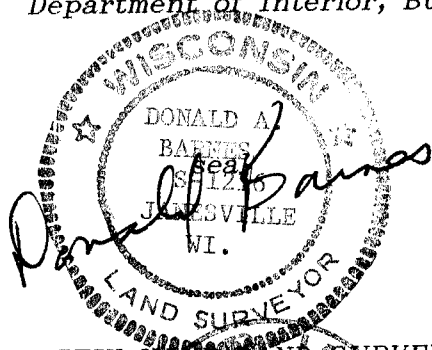
C) Was the corner restored through acceptance of (1) an obliterated evidence location, or, (2) a found perpetuated location?

ACCEPTED FOUND ALUMINUM MONUMENT.

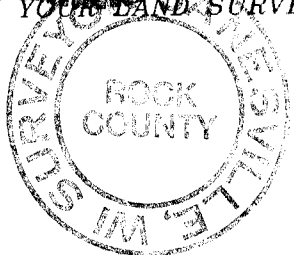
D) Describe any material discrepancy between the location of the corner as restored or reestablished and the location of that corner as previously restored or reestablished by distance and direction. Show the discrepancy on the plan view drawing under (a), above. Show the distances between the corner as previously restored or reestablished and (1) the corner as restored or reestablished, and (2) to at least 4 of the witness monuments shown on the drawing in (a), above.

(E) Was the corner reestablished through lost corner proportionate methods? If so, show the method, including the directions and distances to other public land survey corners used as evidence or used for proportioning the corner location.

I, Donald Barnes, hereby certify that the corner points as identified by the corner code index were, in a field survey on, MAY 11, 1992, established, re-established, monumented, re-monumented, recovered or restored as expressed below and in conformance with the regulations and rules as required in the current manual of survey instructions of the United States Department of Interior, Bureau of Land Management.



AFFIX YOUR LAND SURVEYOR SEAL



COUNTY SURVEYOR FILING DATA

Date of computer entry \_\_\_\_\_

Date microfilmed \_\_\_\_\_

Number of included sheets \_\_\_\_\_  
CORNER CODE