

U.S. PUBLIC LAND SURVEY MONUMENT RECORD

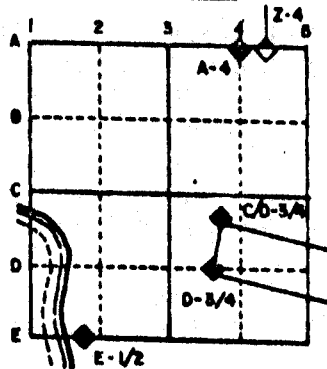
For Public Land Survey Corners in the
T. 2 N., R. 12 E.

CORNER CODE INDEX

	1	2	3	4	5	6	7	8	9	10	11	12	13	14	15	16	17	18	19	20	21	22	23	24	25
A																									
B																									
C	6																								
D		5																							
E			4																						
F				3																					
G					2																				
H	7																								
I		6																							
J			5																						
K				4																					
L	8				3																				
M		7				2																			
N			6				1																		
O				5																					
P					4																				
Q	9					3																			
R		8					2																		
S			7					1																	
T	10																								
U		9																							
V			8																						
W				7																					
X	11				6																				
Y		10				5																			
Z			9				4																		

PLACE MONUMENT SYMBOL (◆) AT PROPER LOCATION ON ABOVE INDEX

EXAMPLE

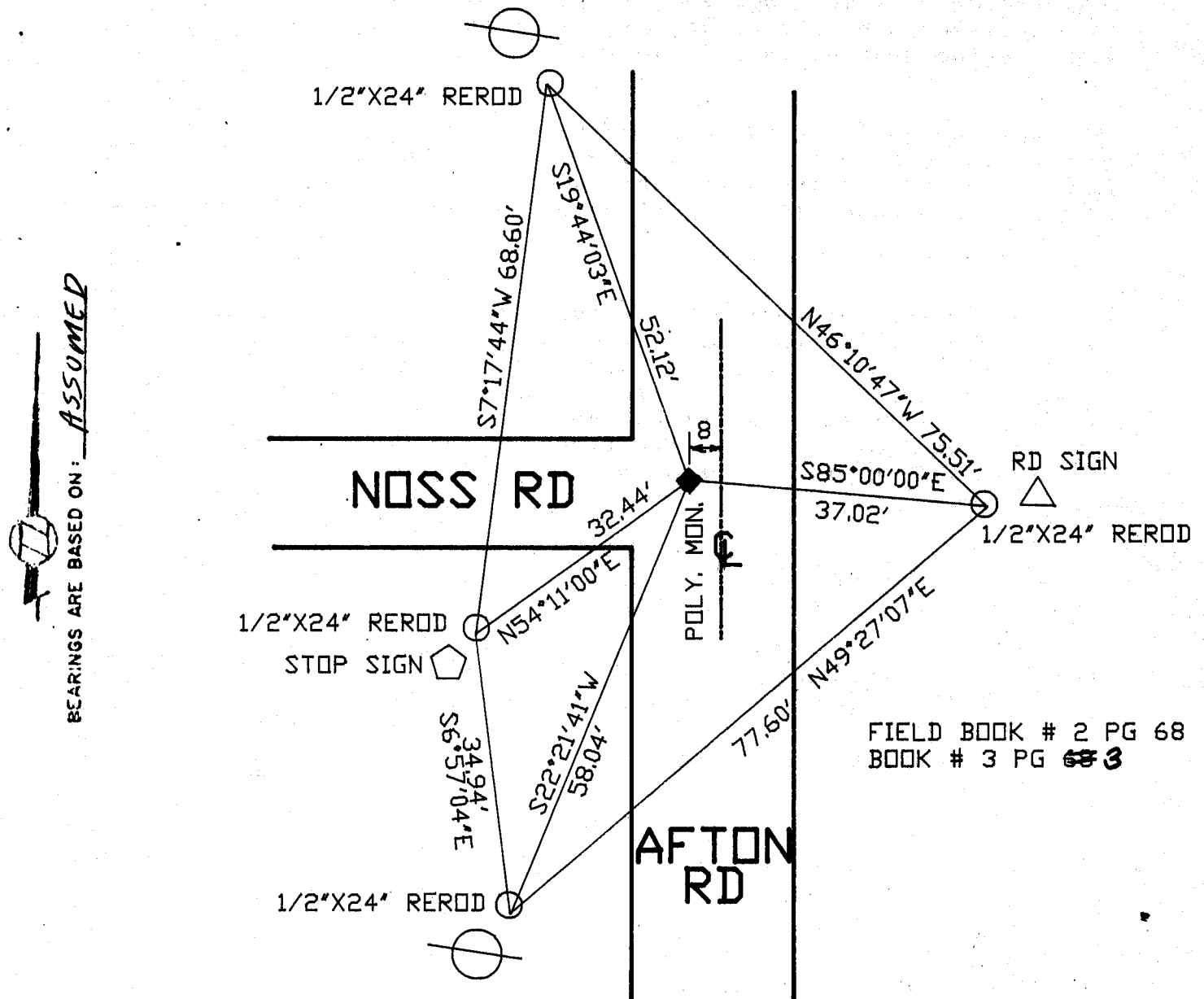


ROCK TWP
ROCK COUNTY WI

IF AVAILABLE
STATE PLANE COORDINATES

North (Y) _____ Elevation (Z) _____
 East (X) _____ Zone _____
 Horizontal Datum _____ Vertical Datum _____

e.) ◆ CORNER MONUMENT ○ WITNESS MONUMENT



BEARINGS ARE BASED ON: ASSUMED

FIELD BOOK # 2 PG 68
BOOK # 3 PG ~~68~~ 3

MICROFILMED

SHEET ___ OF ___

CORNER CODE: X13

(B) Describe any record evidence, monument evidence, occupational evidence, testimonial evidence or any other material evidence you considered, and whether the monument was found or placed.

- 1834 HARRISON ORIGINAL GOVERNMENT SURVEYOR. FIELD NOTES - QUARTER SECTION CORNER. SET POST & RAISED MOUND.
- 1855 CHURCH VOL 1 PG 30 SHOWS 2640 TO THE NE COR OF SEC 33, 2650.56 TO THE CENTER OF SEC 33, 2632.08 TO THE SE COR OF SEC 33.
- 1856 CHURCH OL 1 PG 65 SHOWS 2630.76 TO THE CENTER OF SECTION 33
- 1858 CHURCH VOL 1 PG 80 SHOWS 2656.50 TO THE CENTER OF SECTION 34.
- 1958 BATTERMAN JR. VOL 3 PG 553 1/2" IRON PIN. REFERENCED SAME.
- 1966 BATTERMAN JR. VOL 4 PG 258 SHOWS REFERENCE TIES.

FOUND 1/2"X24" REROD. REPLACED IT WITH A POLY. MONUMENT.

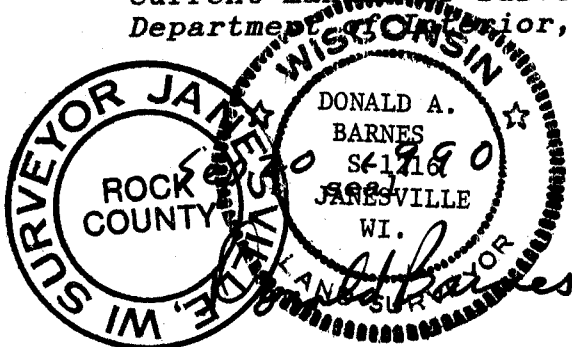
C) Was the corner restored through acceptance of (1) an obliterated evidence location, or, (2) a found perpetuated location?

ACCEPTED FOUND PERPETUATED LOCATION.

D) Describe any material discrepancy between the location of the corner as restored or reestablished and the location of that corner as previously restored or reestablished by distance and direction. Show the discrepancy on the plan view drawing under (a), above. Show the distances between the corner as previously restored or reestablished and (1) the corner as restored or reestablished, and (2) to at least 4 of the witness monuments shown on the drawing in (a), above.

(E) Was the corner reestablished through lost corner proportionate methods? If so, show the method, including the directions and distances to other public land survey corners used as evidence or used for proportioning the corner location.

I, Donald Barnes, hereby certify that the corner points as identified by the corner code index were, in a field survey on, JULY 13, 1989, established, re-established, monumented, re-monumented, recovered or restored as expressed below and in conformance with the regulations and rules as required in the current manual of survey instructions of the United States Department of Interior, Bureau of Land Management.



COUNTY SURVEYOR FILING DATA

Date of computer entry _____

Date microfilmed _____

Number of included sheets _____
CORNER CODE

AFFIX YOUR LAND SURVEYOR SEAL

X 13