

# U.S. PUBLIC LAND SURVEY MONUMENT RECORD

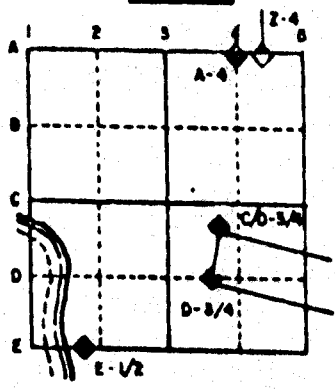
For Public Land Survey Corners in the  
 T. 2 N., R. 2 E.

## CORNER CODE INDEX

	1	2	3	4	5	6	7	8	9	10	11	12	13	14	15	16	17	18	19	20	21	22	23	24	25
A																									
B																									
C	6																								
D		5																							
E			4																						
F				3																					
G					2																				
H																									
I	7																								
J		6																							
K			5																						
L				4																					
M					3																				
N						2																			
O							1																		
P	8																								
Q		20																							
R			21																						
S				22																					
T					23																				
U						24																			
V							25																		
W	30																								
X		29																							
Y			28																						
Z				27																					
					26																				
						25																			
							24																		
								23																	
									22																
										21															
											20														
												19													
													18												
														17											
															16										
																15									
																	14								
																		13							
																			12						
																				11					
																					10				
																						9			
																							8		
																								7	
																									6
																									5
																									4
																									3
																									2
																									1

PLACE MONUMENT SYMBOL (◆) AT PROPER LOCATION ON ABOVE INDEX

### EXAMPLE



ROCK TWP  
ROCK COUNTY WI

### IF AVAILABLE STATE PLANE COORDINATES

North (Y) \_\_\_\_\_ Eleve. (Z) \_\_\_\_\_  
 East (X) \_\_\_\_\_ Zone \_\_\_\_\_  
 Hor. Datum \_\_\_\_\_ Vert. Datum \_\_\_\_\_

◆ CORNER MONUMENT

○ WITNESS MONUMENT

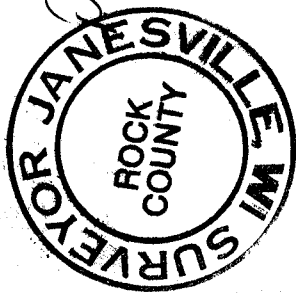
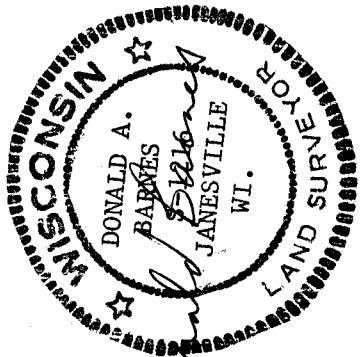
BEARINGS ARE BASED ON:

MICROFILMED

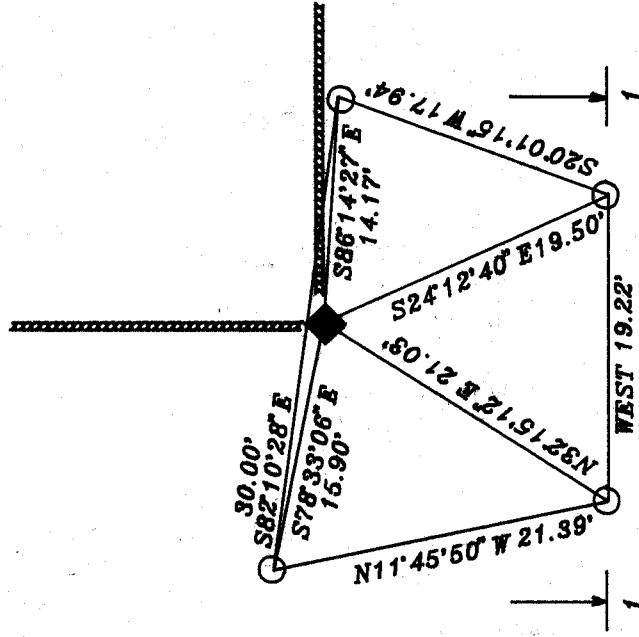
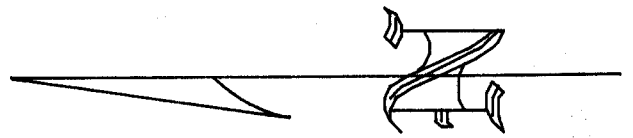
SHEET 2 OF 2

CORNER CODE: V/3

C.T.H. D



# PLYMOUTH/CHURCH RD



# DRIVEWAY

◆ FOUND 1" PIPE 24" ABOVE GROUND IN CONCRETE.

○ PLACED 3/4X24" REBOD

FIELD BOOK #3 PG 578

(B) Describe any record evidence, monument evidence, occupational evidence, testimonial evidence or any other material evidence you considered, and whether the monument was found or placed.

- 1834 HARRISON ORIGINAL GOVERNMENT SURVEYOR. FIELD NOTES - CORNER TO SECTION 27,28,33, & 34 WHITE OAK 12 N8E 146, WHITE OAK 12 S64E 50, WHITE OAK 12 N45W 32 AND WHITE OAK 12 S68W 135. MEASURED 2665.74 TO S 1/4 CORNER OF SECTION 27 AND 2653.20 TO S 1/4 CORNER OF SECTION 28.
- 1855 CHURCH VOL 1 PG 30. SHOWS A DISTANCE OF 2772 TO THE N 1/4 CORNER OF SECTION 33 AND 2640 TO THE E 1/4 CORNER OF SECTION 33.
- 1856 CHURCH VOL 1 PG 65. SHOWS 2651.88 TO N 1/4 CORNER OF SECTION 33.
- 1881 LEE VOL 2 PG 325 FOUND STUMPS OF BEARING TREES. DROVE OAK STAKE AND SURROUNDED BY STONES. SHOWS 2673.66 TO S 1/4 CORNER OF SECTION 27.
- 1906 KERCH VOL 3 PG 39. FOUND STONE SET BY BLEEDORN. SHOWS 2651.16 TO S 1/4 CORNER OF SECTION 28.
- 1952 BATTERMAN MAP #3411 FOUND PIN. CALLS FOR 1325.2 TO 1/16TH CORNER THAT IS TO THE WEST.
- 1953 BATTERMAN MAP #3427 FOUND PIN OVER PIPE.
- 1955 BATTERMAN MAP #3416 FOUND PIN
- 1981 SCHROEDER CSM 10 PG 407 USED BUT STATED NOTHING ABOUT CORNER.
- 1987 COMBS MAP #13128 USED BUT STATES NOTHING ABOUT THE CORNER.

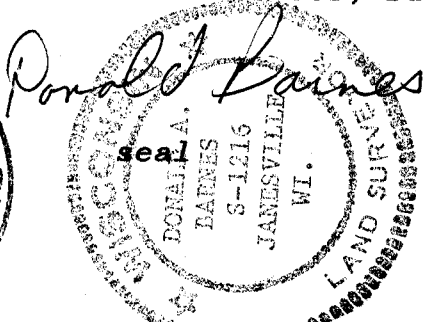
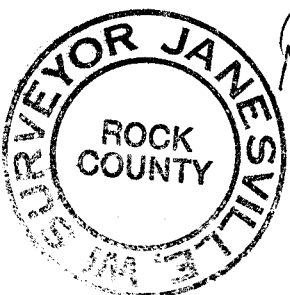
FOUND 1" PIPE 2' ABOVE GROUND IN CONCRETE THAT IS FOR THE CORNER FENCE POST. ACCEPTED THE PIPE BECAUSE IT IS IN HARMONY WITH THE N 1/4 CORNER AND N 1/16TH CORNER OF THE NE QUARTER OF SECTION 33. FOUND THAT THE 1/16TH CORNER IS .08' OFF A LINE BETWEEN THE N 1/4 CORNER AND THE NE CORNER OF SECTION 33. THE DISTANCE BETWEEN THE N 1/4 CORNER AND 1/16TH CORNER IS 1325.41 AND THE 1325.54 BETWEEN THE 1/16TH CORNER AND THE NE CORNER OF SECTION 33.

C) Was the corner restored through acceptance of (1) an obliterated evidence location, or, (2) a found perpetuated location?

ACCEPTED FOUND MONUMENT.

D) Describe any material discrepancy between the location of the corner as restored or reestablished and the location of that corner as previously restored or reestablished by distance and direction. Show the discrepancy on the plan view drawing under (a), above. Show the distances between the corner as previously restored or reestablished and (1) the corner as restored or reestablished, and (2) to at least 4 of the witness monuments shown on the drawing in (a), above.

I, Donald Barnes, hereby certify that the corner points as identified by the corner code index were, in a field survey on, November 20, 1991, established, re-established, monumented, re-monumented, recovered or restored as expressed below and in conformance with the regulations and rules as required in the current manual of survey instructions of the United States Department of Interior, Bureau of Land Management.



COUNTY SURVEYOR FILING DATA

Date of computer entry \_\_\_\_\_

Date microfilmed \_\_\_\_\_

Number of included sheets \_\_\_\_\_

CORNER CODE

AFFIX YOUR LAND SURVEYOR SEAL