

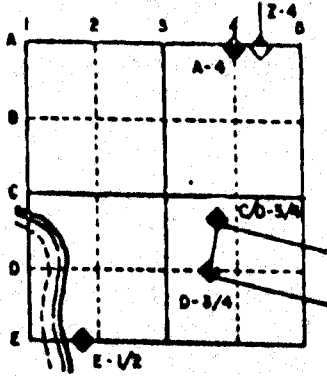
# U.S. PUBLIC LAND SURVEY MONUMENT RECORD

For Public Land Survey Corners in the  
 T. 2 N., R. 12 E.  
 CORNER CODE INDEX

	1	2	3	4	5	6	7	8	9	10	11	12	13	14	15	16	17	18	19	20	21	22	23	24	25
A																									
B																									
C	6																								
D		5																							
E			4																						
F				3																					
G					2																				
H	7																								
I		8																							
J			9																						
K				10																					
L					11																				
M						12																			
N							13																		
O								14																	
P									15																
Q										16															
R											17														
S												18													
T													19												
U														20											
V															21										
W																22									
X																	23								
Y																		24							
Z																			25						
																				26					
																					27				
																						28			
																							29		
																								30	
																									31
																									32
																									33
																									34
																									35
																									36

PLACE MONUMENT SYMBOL (◆) AT PROPER LOCATION ON ABOVE INDEX

EXAMPLE



ROCK TWP  
 ROCK COUNTY WI

IF AVAILABLE  
 STATE PLANE COORDINATES

North (Y) \_\_\_\_\_ Elev. (Z) \_\_\_\_\_  
 East (X) \_\_\_\_\_ Zone \_\_\_\_\_  
 Hor. Datum \_\_\_\_\_ Vert. Datum \_\_\_\_\_

◆ CORNER MONUMENT

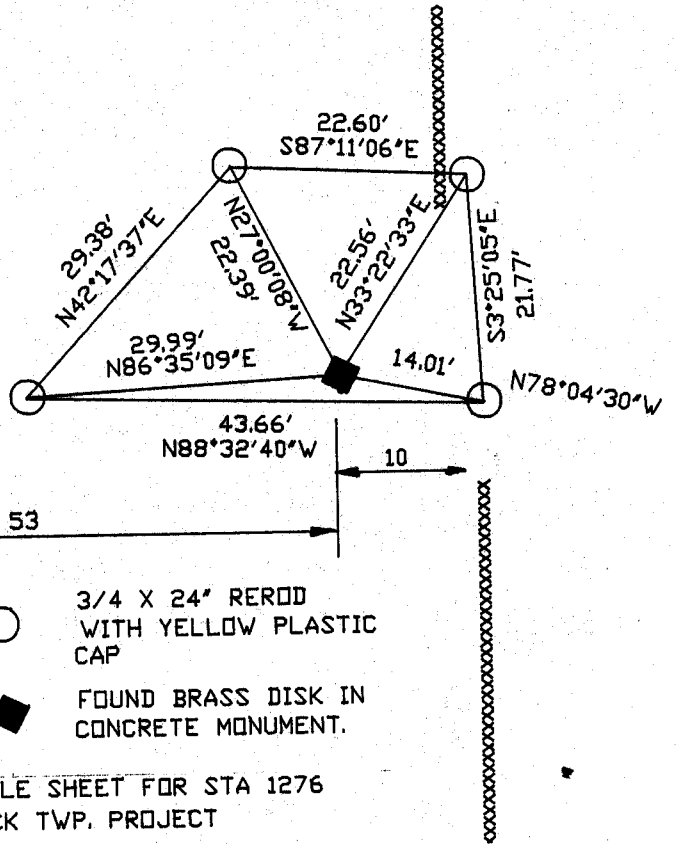
○ WITNESS MONUMENT

BEARINGS ARE BASED ON: Rock Twp Project

SIXTH ST.

APPROXIMATE R/R TRACKS

APPROXIMATE R/R TRACKS



- 3/4 X 24' REROD WITH YELLOW PLASTIC CAP
- ◆ FOUND BRASS DISK IN CONCRETE MONUMENT.

ANGLE SHEET FOR STA 1276  
 ROCK TWP. PROJECT

**MICROFILMED**

SHEET \_\_\_ OF \_\_\_

CORNER CODE: T/13

(B) Describe any record evidence, monument evidence, occupational evidence, testimonial evidence or any other material evidence you considered, and whether the monument was found or placed.

1834 HARRISON ORIGINAL GOVERNMENT SURVEYOR. FIELD NOTES - QUARTER SECTION CORNER. BURR OAK 10 N33E 49 AND BURR OAK 10 N50W 113. NORTH 879.12 AND INTERSECTED RIGHT BANK OF ROCK RIVER. SET MEANDER POST AND RAISED MOUND.

1851 McVEAN VOL 1 PG 3 SHOWS 2643.96' TO THE CENTER OF SECTION 28 AND 5289.90' TO W 1/4 CORNER OF SECTION 28.

1881 LEE VOL 2 PG 325 FOUND JUNCTION OF FENCES SAID TO BE AT CORNER. BEARING TREES STUMPS GONE. ERECT FLAG POLE FOR SIGHT FROM SOUTH AND SET POINTS ON LINE SOUTH OF CREEK.

1945 BATTERMAN SR. PLACED PIN AND SURROUNDED BY 4 HH. SURVEY ON RECORD IN R.H. BATTERMAN Co.

1961 BATTERMAN JR. FOUND PIN AND REPLACED WITH BRASS DISK IN CONCRETE MONUMENT. SURVEY ON RECORD IN R.H. BATTERMAN Co.

1989 SCHROEDER MAP #01060 USED CORNER FOR SURVEY BUT DID NOT CALL FOR TYPE OF MONUMENT.

FOUND BRASS CAP WITH DRILL HOLE IN CONCRETE MONUMENT. THE DISTANCE TO THE W 1/4 CORNER OF SECTION 28 IS 5309.31'.

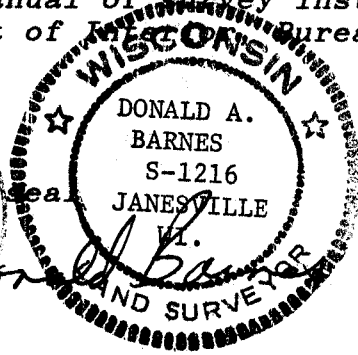
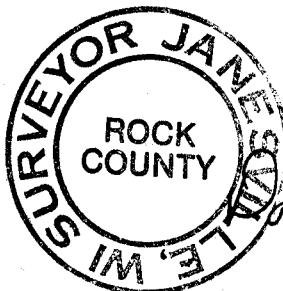
C) Was the corner restored through acceptance of (1) an obliterated evidence location, or, (2) a found perpetuated location?

ACCEPTED FOUND PERPETUATED MONUMENT.

D) Describe any material discrepancy between the location of the corner as restored or reestablished and the location of that corner as previously restored or reestablished by distance and direction. Show the discrepancy on the plan view drawing under (a), above. Show the distances between the corner as previously restored or reestablished and (1) the corner as restored or reestablished, and (2) to at least 4 of the witness monuments shown on the drawing in (a), above.

(E) Was the corner reestablished through lost corner proportionate methods? If so, show the method, including the directions and distances to other public land survey corners used as evidence or used for proportioning the corner location.

I, Donald Barnes, hereby certify that the corner points as identified by the corner code index were, in a field survey on, MAY 7, 1991, established, re-established, monumented, re-monumented, recovered or restored as expressed below and in conformance with the regulations and rules as required in the current manual of survey instructions of the United States Department of Interior Bureau of Land Management.



COUNTY SURVEYOR FILING DATA

Date of computer entry \_\_\_\_\_

Date microfilmed \_\_\_\_\_

Number of included sheets \_\_\_\_\_

CORNER CODE

AFFIX YOUR LAND SURVEYOR SEAL

T 13