

Paper weight-110# (minimum)

Black nonfading ink required

U.S. PUBLIC LAND SURVEY MONUMENT RECORD

For Public Land Survey Corners In:
T. 4 N. R. 10 E. 4th P.M.

WI ADMINISTRATIVE CODE A-E 7.08 REQUIREMENT
REV 10/23/2004 USMONREC.DWG

CORNER CODE INDEX

UNION TWP

ROCK COUNTY WI

IF AVAILABLE
ROCK COUNTY COORDINATES PREFERRED

A	1	2	3	4	5	6	7	8	9	10	11	12	13	14	15	16	17	18	19	20	21	22	23	24	25	A
B																										B
C																										C
D																										D
E																										E
F																										F
G																										G
H																										H
J																										J
K																										K
L																										L
M																										M
N																										N
O																										O
P																										P
Q																										Q
R																										R
S																										S
T																										T
U																										U
V																										V
W																										W
X																										X
Y																										Y
Z																										Z

North _____ Elev. _____

East _____

Hor. Datum _____ Vert. Datum _____

LATITUDE _____ ELLIPS. HT. _____

LONGITUDE _____

NAD83(91) _____ NETWORK ADJ. YR 2010

GPS (X) _____ TRAVERSE (X) X

BASED ON THE FOLLOWING CONTROL:

PLACE MONUMENT SYMBOL AT PROPER LOCATION ON ABOVE INDEX

CORNER MONUMENT

WITNESS MONUMENT

(a)

ROCK COUNTY PROJECTION
BEARINGS ARE BASED ON: -----

FIELD BOOK _____ PAGE # _____
OR OBSERVATION SHEET _____

SHEET 1 OF 3

SHOW A PLAN VIEW DRAWING DEPICTING THE CORNER MONUMENT AND SURROUNDING PHYSICAL FEATURES, INCLUDING THE EXCAVATION AREA AND DEPTH.

PLANNING & ZONING COMMITTEE ADOPTED THIS FORM ON 12/2/1982

CORNER CODE R. 23

UN592 N1/4CORSEC25

(B) Describe any record evidence, monument evidence, occupational evidence, testimonial evidence or any other material evidence you considered, and whether the monument was found or placed.

1833 HARRISON (NOV5) T4N R10E EAST ON RAND. BET SECS 24 & 25

- 2640.0 TEMPY 1/4 POST
- 5205.42 INT. EAST BDY 52.80' NORTH OF POST LAND ROLLING 2ND RATE TIMBER WHITE & BURR OAK INDY, ?? GRASS, & WEEDS
WEST COR WEST BE. 24 & 25
- 2602.71 QUARTER SEC. COR
BURR OAK 18 N67W 34.98'; WHITE OAK 24 N52E 49.5' {BURR OAK 18; WHITE OAK 24} MARKED
- 5205.42 SEC COR.

1870 RUGER AUG18 REMON-66 EAST ON NORTH LINE OF NW 1/4 SEC 25 ON A VAR 6-50 OFFSET NORTH 17.82' AT

- 2620.20 INTERSECTED QUARTER LINE 17.16' NORTH OF QUARTER CORNER FOUND OLD STAKE AT CORNER ALSO FOUND STUMPS OF EAST BEARING TREE AND REMAINS OF STUMP OF WEST BEARING TREE. COR VAR 5-51
EAST ON NORTH LINE OF NE 1/4 SEC 25 ON A VAR 6-50 OFFSET NORTH 17.16' OFFSET NORTH 9.9' AT
- 2614.92 INTERSECTED EAST BOUNDARY LINE 38.94' NORTH OF CORNER FOUND STAKE AT CORNER. ALSO FOUND NORTH BEARING TREE AND STUMP OF SOUTH BEARING TREE. COR VAR 6-35

1970 BATTERMAN 4 PG 449 FD CUT STONE 18 +/- NORTH OF E/W FENCE LINE & 732.69' EAST OF CENTER OF TERRITORIAL ROAD.

1998 COMBS #8122 FD STONE MON. S87-47-45E 2616.56 TO STONE MON @ SE COR SEC 24

1999 COMBS CSM VOL 23 PG 107 FD STONES @ NW & N 1/4 COR SEC 25 2622.13 BETWEEN STONES

1999 COMBS CSM VOL 23 PG 111 FD STONES @ NW & N 1/4 COR SEC 25 2622.13 BETWEEN STONES. 732.39 TO REROD @ CENTER OF TERRITORIAL RD.

2003 COMBS P-32 PG 596 "CONIFER HILLS" FD STONES @ NW COR SEC 25 & N 1/4 COR SEC 25. 2622.13 BETWEEN STONES.

2003 COMBS P-32 PG 620 "CONIFER HILLS FIRST ADDITION" FD STONES @ NW COR SEC 25 & N 1/4 COR SEC 25. 2622.13 BETWEEN STONES.

2004 COMBS CSM VOL 27 PG 270 FD STONES @ NW COR SEC 25 & N 1/4 COR SEC 25. 2622.13 BETWEEN STONES.

2007 COMBS P-32 PG "CONIFER HILLS SECOND ADDITION" FD STONES @ NW COR SEC 25 & N 1/4 COR SEC 25. 2622.13 BETWEEN STONES.

2008 COMBS P-32 PG 848 "CONIFER HILLS THIRD ADDITION" FD STONES @ NW COR SEC 25 & N 1/4 COR SEC 25. 2622.13 BETWEEN STONES. NW COR TO N 1/4 COR SEC 25 N89-24-04E & NW COR SEC 25 S1-09-34E 1052.93 TO FD PIN

FD CUT LIMESTONE 0.1' BELOW GRADE. PLACED 2 MAGNETS 0.5' DEEP ON NORTH SIDE OF L.S. & YELLOW CARSONITE POST ON SOUTH SIDE OF L.S. L.S. IS 0.47' OF A LINE BETWEEN THE SW & SE CORNERS OF SEC 24.

Donald Barnes
OCT 29 2011

UN592 N1/4CORSEC25

C) Was the corner restored through acceptance of (1) an obliterated evidence location, or, (2) a found perpetuated location?

ACCEPTED FD CUT LIMESTONE.

D) Describe any material discrepancy between the location of the corner as restored or reestablished and the location of that corner as previously restored or reestablished by distance and direction. Show the discrepancy on the plan view drawing under (a), above. Show the distances between the corner as previously restored or reestablished and (1) the corner as restored or reestablished, and (2) to at least 4 of the witness monuments shown on the drawing in (a), above.

NONE

(E) Was the corner reestablished through lost corner proportionate methods? If so, show the method, including the directions and distances to other public land survey corners used as evidence or used for proportioning the corner location.

NO

I, **Donald Barnes**, hereby certify that the corner location as identified by the corner code index was determined by me under my direction and control and that this U.S. Public Land Survey Monument Record is correct and complete to the best of my knowledge and belief.


SEAL
Emboss
Barnes

SHEET 2 OF 3

OCT 20, 2011

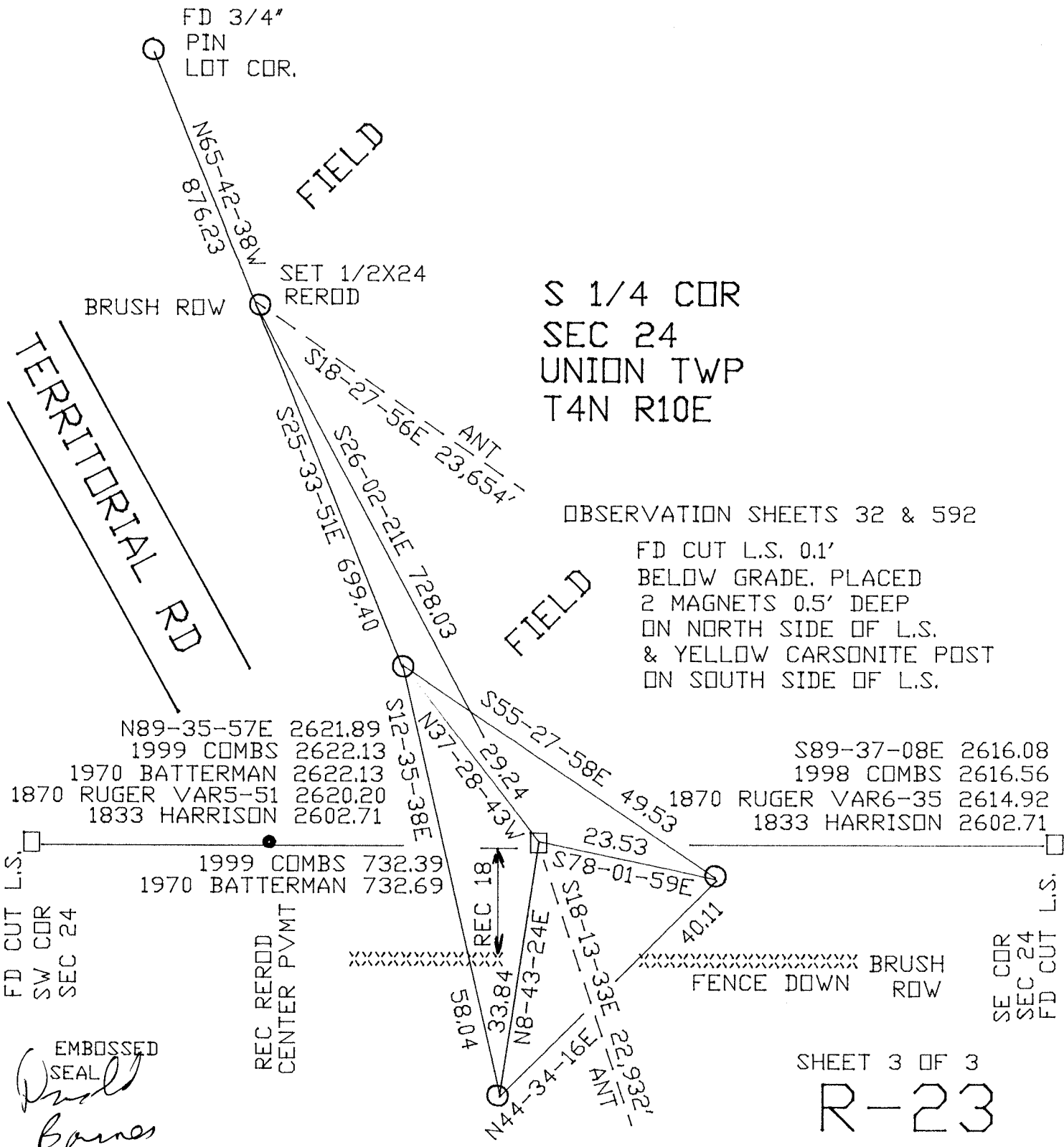
CORNER CODE **R-23**

A.E. 7.08 REQUIREMENT

S 1/4 COR
 SEC 24
 UNION TWP
 T4N R10E

OBSERVATION SHEETS 32 & 592

FD CUT L.S. 0.1'
 BELOW GRADE. PLACED
 2 MAGNETS 0.5' DEEP
 ON NORTH SIDE OF L.S.
 & YELLOW CARSONITE POST
 ON SOUTH SIDE OF L.S.



N89-35-57E	2621.89
1999 COMBS	2622.13
1970 BATTERMAN	2622.13
1870 RUGER VAR5-51	2620.20
1833 HARRISON	2602.71

S89-37-08E	2616.08
1998 COMBS	2616.56
1870 RUGER VAR6-35	2614.92
1833 HARRISON	2602.71

1999 COMBS	732.39
1970 BATTERMAN	732.69

EMBOSSED SEAL
D. Barnes
 0 AT 20, 2011