

Paper weight-110# (minimum)

Black nonfading ink required

U.S. PUBLIC LAND SURVEY MONUMENT RECORD

For Public Land Survey Corners In:
T. 4 N. R. 10 E. 4th P.M.
CORNER CODE INDEX

WI ADMINISTRATIVE CODE A-E 7.08 REQUIREMENT
REV 10/23/2004 USMONREC.DWG

UNION TWP

ROCK COUNTY WI

IF AVAILABLE
ROCK COUNTY COORDINATES PREFERRED

A	1	2	3	4	5	6	7	8	9	10	11	12	13	14	15	16	17	18	19	20	21	22	23	24	25	A
B		6				5				4				3				2				1				B
C																										C
D																										D
E																										E
F																										F
G																										G
H																										H
I																										I
J																										J
K																										K
L																										L
M																										M
N																										N
O																										O
P																										P
Q																										Q
R																										R
S																										S
T																										T
U																										U
V																										V
W																										W
X																										X
Y																										Y
Z																										Z

North _____ Elev. _____

East _____

Hor. Datum _____ Vert. Datum _____

LATITUDE _____ ELLIPS. HT. _____

LONGITUDE _____

NAD83(91) _____ NETWORK ADJ. YR 2010 _____

GPS (X) _____ TRAVERSE (X) X

BASED ON THE FOLLOWING CONTROL:

PLACE MONUMENT SYMBOL AT PROPER LOCATION ON ABOVE INDEX

CORNER MONUMENT

WITNESS MONUMENT

BEARINGS ARE BASED ON: ROCK COUNTY PROJECTION

FIELD BOOK _____ PAGE # _____
OR OBSERVATION SHEET #107

SHEET 1 OF 3

SHOW A PLAN VIEW DRAWING DEPICTING THE CORNER MONUMENT AND SURROUNDING PHYSICAL FEATURES, INCLUDING THE EXCAVATION AREA AND DEPTH.

PLANNING & ZONING COMMITTEE ADOPTED THIS FORM ON 12/2/1982

CORNER CODE J-21

UN551 NECORSEC14

1870 RUGER AUG REMON-102 EAST ON NORTH LINE OF NW
1/4 SEC 13 ON A VAR 6-25; OFFSET NORTH
16.5' AT

2614.48 INTERSECTED QUARTER LINE AT QUARTER
CORNER. FOUND REMAINS OF OLD STAKE AT
CORNER. COR VAR 6-46

EAST ON NORTH LINE OF NE 1/4 SEC 13 ON A
VAR 6-50; OFFSET SOUTH 5.61' AT

2597.10 INTERSECTED EAST BOUNDARY LINE 3.96'
NORTH OF CORNER. FOUND OLD STAKE
SURROUNDED BY LINE STONES AT CORNER.
COR VAR 6-38

1870 RUGER AUG REMON-101 EAST ON NORTH LINE OF NW 1/4
SEC 14 ON A VAZR 7-20; OFFSET SOUTH 17.82'
AT

2630.10 INTERSECTED QUARTER LINE 16.5' SOUTH OF
QUARTER CORNER. FOUND OLD STAKE AT
CORNER. ALSO FOUND BOTH BEARING TREES.
STAKE CORRECT. COR VAR 7-18' AUGUST 31,
1870

EAST ON NORTH LINE OF NE 1/4 SEC 14
ON A VAR 7-16'; OFFSET NORTH 23.1' AT

2623.50 INTERSECTED EAST BOUNDARY LINE 22.44'
NORTH OF CORNER. FOUND REMAINS OF OLD
STAKE AT CORNER. COR VAR 7-17

1870 RUGER AUG REMON-103 NORTH ON WEST LINE OF SW
1/4 SEC 12 ON A VAR 7-00; AT

2682.90 INTERSECTED QUARTER LINE AT CORNER.
FOUND OLD STAKE AT CORNER.

NORTH ON WEST LINE OF NW 1/4 SEC 12 ON
A VAR 7-00; OFFSET EAST 5.94' AT

2692.80 INTERSECTED NORTH BOUNDARY LINE 5.94'
EAST OF CORNER. FOUND REMAINS OF OLD
STAKE AT CORNER. ALSO FOUND BEARING TREE
AND REMAINS OF STUMP OF OTHER BEARING
TREE.

1995 COMBS CSM VOL 18 PG 240 CUT LS. N89-55-30W 2631.27
TO CUT LS @ S 1/4 COR SEC 11.

1995 COMBS CSM VOL 18 PG 242 CUT LS. N89-55-30W 2631.27
TO CUT LS @ S 1/4 COR SEC 11.

2000 COMBS CSM VOL 23 PG 443 CUT LS 2621.76 TO CUT LS @ N
1/4 COR SEC 13.

FD CUT LIMESTONE WITH CARSONITE @ NW COR OF L.S. STONE IS
0.6' ABOVE GRADE, 2.5' SOUTH OF FENCE POST @ FENCE INT., & 4'
SE OF VERY LARGE PILES OF STONES.

C) Was the corner restored through acceptance of (1) an obliterated evidence location, or, (2) a found perpetuated location?

ACCEPTED FD CUT LIMESTONE.

I, **Donald Barnes**, hereby certify that the corner location as identified by the corner code index was determined by me under my direction and control and that this U.S. Public Land Survey Monument Record is correct and complete to the best of my knowledge and belief.

SEAL

SHEET 2 OF 3

(Emboss
Donald Barnes

CORNER CODE J-21

APR 13 2011

A.E. 7.08 REQUIREMENT

UN551 NECORSEC14

(B) Describe any record evidence, monument evidence, occupational evidence, testimonial evidence or any other material evidence you considered, and whether the monument was found or placed.

1833 (OCT) HARRISON EAST ON RAND. BET SECS 12 & 13 T4N
R10E
1452 BROOK 3.3' CRS N.E.
2640 SET TEMPY 1/4 SEC COR
5188.92 INT. E BDY 46.2' NORTH OF POST LAND ROLLING
1ST RATE PRAIRIE.
WEST COR WEST BET SEC 12 & 13
2627.46 QUARTER SEC COR {SET POST & RAISED MOUND
OF EARTH & SOD
2594.46 PENGELED IN BELOW 2627.46
5188.92 SEC COR
1833 (NOV5) HARRISON T4N R10E NORTH BET 13 & 14
1599.84 BURR O 22
2640.00 QUARTER SEC. COR. BURR O 18 N42E 9.9";
BURR OAK 18 S41E 52.14' BURR 18 & BURR
18}MARKED
2871.00 ROAD E & W & LEAVE TIMBER AND ENTER
PRAIRIE
3796.98 BROOK 3.3' CRS N.E.
4620.0 SPRING & ?? S.E.
5280.00 SEC COR TO SECS 11,12,13,14. SET A POST &
RAISED A MOUND LAND 1ST 1/2 MILE SAME AS
BEFORE AND 2 1/2 ROLLING PRAIRIE 2ND RATE
SOMEWHAT WET.
1833 (NOV5) HARRISON T4N R10E NORTH BET SECS 11 & 12
1069.2 PRAIRIE CRS E
2640 QUARTER SEC. COR. SET POST & RAISED
MOUND
4620.0 SE POINT OF TIMBER
5280 SET POST FOR COR TO SECS 1,2,11, 12
NEAR SE POINT OF TIMBER
{BURR O 10" S86W 115.5', BURR O 12" S21W
198' NO OTHER NEAR
LAND ROLLING 1ST RATE PRAIRIE
NOV 5TH 1833
1833 HARRISON EAST ON RAND. BET SECS 11 & 14
825.0 LEAVE PRAIRIE BEARING N.E.
2640.00 TEMPY 1/4 SEC COR
4092.0 ENTER PRAIRIE
5215.98 INT E BDY 9.24' N OF P LAND ROLLING 2ND
RATE & ? PRAIRIE-WHICH IS 1ST RATE TIMBER
OF WOODLAND ALL BUR O.
WEST COR WEST BET SECS 11 & 14
2607.99 QUARTER SEC COR. {BURR O 8 N8E 47.52';
BURR O 8 N50W 51.47' BURR O 8 & BURR O
8}MARKED
5215.98 SEC COR
1870 RUGER AUG REMON-101 SOUTH ON EAST LINE OF NE 1/4
SEC 14 ON A VAR 7-05; OFFSET WEST 6.6' AT
2648.25 INTERSECTED QUARTER LINE 9.24'. WEST OF
QUARTER CORNER. FOUND REMAINS OF OLD
STAKE AT CORNER. ALSO FOUND REMAINS OF
SOUTH BEARING STUMP. STAKE CORRECT. COR
VAR 7-08
SOUTH ON EAST LINE OF SE 1/4 SEC 14 ON A
VAR 6-50; AT
2659.47 INTERSECTED SOUTH BOUNDARY LINE AT
CORNER.

SEAL

Emboss
D. M. P. Pines
Apr 13, 2011

SHEET 1 OF 3

CORNER CODE J-21

○ 3/4X24 REROD

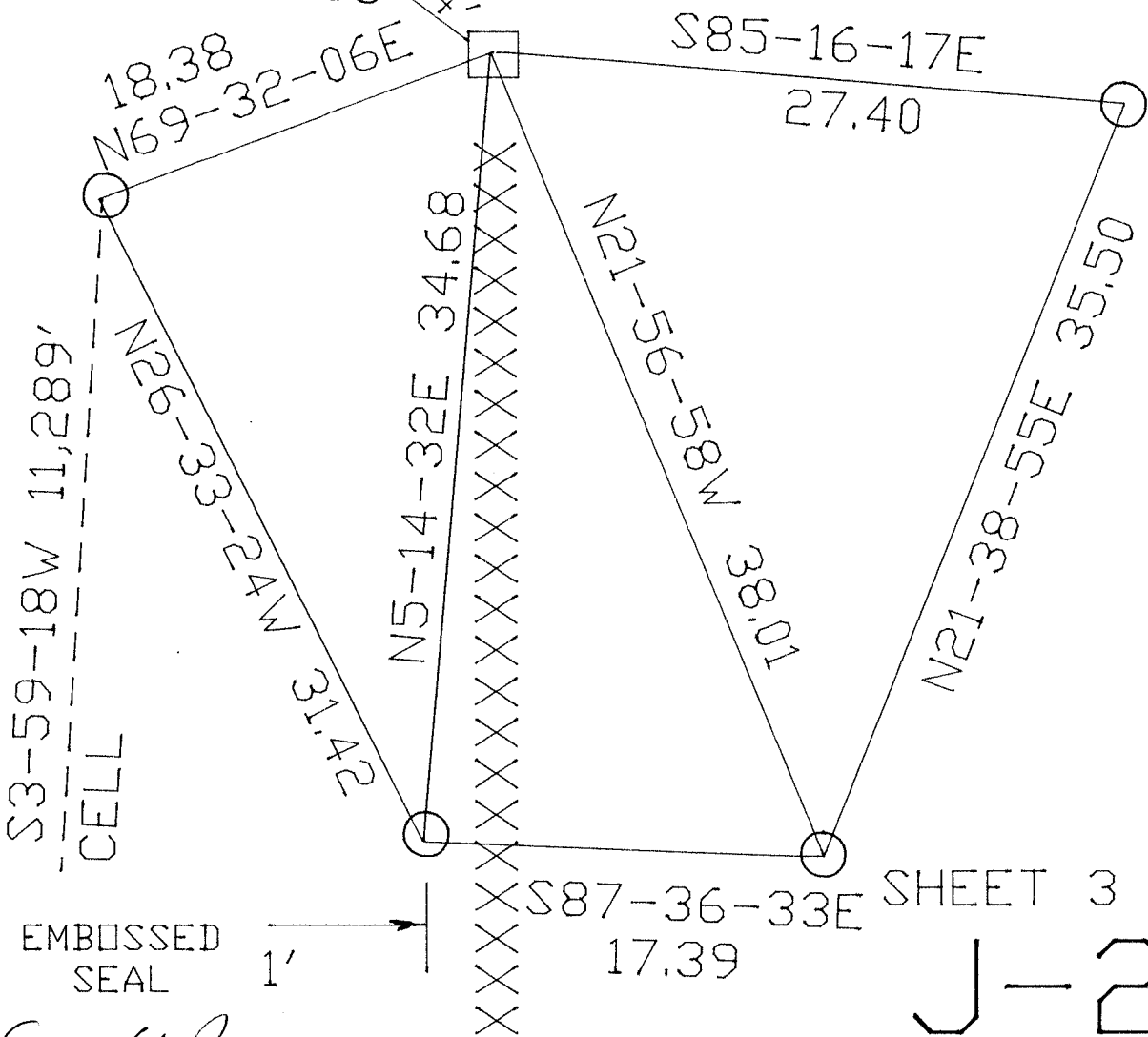
□ FD CARSONITE POST
ON NW COR
OF CUT L.S.
LS 0.6' ABOVE
GRADE

NE COR
SEC 14
UNION TWP
T4N R10E

LARGE PILE
OF STONES

XXX ○○○○ XXX

2.5



J-21

Donald Barnes
APR 13, 2011