

Paper weight-110# (minimum) Black nonfading ink required

U.S. PUBLIC LAND SURVEY MONUMENT RECORD

For Public Land Survey Corners In:
T. 4 N. R. 10 E. 4th P.M.
 CORNER CODE INDEX

WI ADMINISTRATIVE CODE A-E 7.08 REQUIREMENT
 REV 10/23/2004 USMONREC.DWG

UNION TWP
ROCK COUNTY WI

IF AVAILABLE
 ROCK COUNTY COORDINATES PREFERRED

A	1	2	3	4	5	6	7	8	9	10	11	12	13	14	15	16	17	18	19	20	21	22	23	24	25	A
B		6				5				4				3				2			1					B
C																										C
D																										D
E																										E
F																										F
G																										G
H																										H
J																										J
K																										K
L																										L
M																										M
N																										N
O																										O
P																										P
Q																										Q
R																										R
S																										S
T																										T
U																										U
V																										V
W																										W
X																										X
Y																										Y
Z																										Z

1 2 3 4 5 6 7 8 9 10 11 12 13 14 15 16 17 18 19 20 21 22 23 24 25
 PLACE MONUMENT SYMBOL **◆** AT PROPER LOCATION ON ABOVE INDEX

North _____ Elev. _____
 East _____
 Hor. Datum _____ Vert. Datum _____
 LATITUDE _____ ELLIPS. HT. _____
 LONGITUDE _____
 NAD83(91) _____ NETWORK ADJ. YR 2010
 GPS (X) _____ TRAVERSE (X) X
 BASED ON THE FOLLOWING CONTROL:

◆ CORNER MONUMENT ○ WITNESS MONUMENT

BEARINGS ARE BASED ON: --- ROCK COUNTY PROJECTION ---

FIELD BOOK _____ PAGE # _____
 OR OBSERVATION SHEET 29

SHEET 1 OF 3

SHOW A PLAN VIEW DRAWING DEPICTING THE CORNER MONUMENT AND SURROUNDING PHYSICAL FEATURES, INCLUDING THE EXCAVATION AREA AND DEPTH.

PLANNING & ZONING COMMITTEE ADOPTED THIS FORM ON 12/2/1982

CORNER CODE G-21

UN539 W1/4CORSEC12

(B) Describe any record evidence, monument evidence, occupational evidence, testimonial evidence or any other material evidence you considered, and whether the monument was found or placed.

1833 HARRISON NORTH BET SECS 11 & 12

1069.2 PRAIRIE CRS E
2640 QUARTER SEC. COR. SET POST & RAISED
MOUND
4620.0 SE POINT OF TIMBER
5280 SET POST FOR COR TO SECS 1,2,11,12
NEAR SE POINT OF TIMBER
{BURR O 10" S86W 115.5', BURR O 12"
S21W 198' NO OTHER NEAR
LAND ROLLING 1ST RATE PRAIRIE
NOV 5TH 1833

1870 RUGER AUG REMON-103 NORTH ON WEST LINE OF SW
1/4 SEC 12 ON A VAR 7-00; AT

2682.90 INTERSECTED QUARTER LINE AT CORNER.
FOUND OLD STAKE AT CORNER.

NORTH ON WEST LINE OF NW 1/4 SEC 12 ON
A VAR 7-00; OFFSET EAST 5.94' AT

2692.80 INTERSECTED NORTH BOUNDARY LINE 5.94'
EAST OF CORNER. FOUND REMAINS OF OLD
STAKE AT CORNER. ALSO FOUND BEARING TREE
AND REMAINS OF STUMP OF OTHER BEARING
TREE.

1909 KERCH VOL 3 PG 51 MON. USED TO SUBDIVIDE SEC 12.

1970 WEIR CSM VOL 1 PG 317 & #5127 CUT STONE.

1970 WEIR #5127 CUT STONE. NORTH 198.0 TO PIPE.

1976 BARNES VOL 5 PG 124 FD 2 1/2X5 1/2 STONE WITH "11"
CUT ON TOP & 0.3' DEEP. REFERENCED SAME. SOUTH SIDE
OF E/W FENCE & ON EAST SIDE OF N/S FENCE.

2008 LATHROP CSM VOL 32 PG 241 STONE 5264.32 TO STONE
@ E 1/4 COR SEC 11

2008 LATHROP #16081 FD CUT STONE MON. N89-51-08E 5264.32
TO CUT STONE @ E 1/4 COR SEC 11

FD CUT LIMESTONE 0.5' BELOW GRADE. PLACED 2 MAGNETS ON
WEST SIDE OF STONE & CARSONITE POST ON WEST SIDE OF CUT
STONE. MONUMENT WAS UNDER A LARGE PILE OF STONES. ALSO
FD G-1 MONUMENT TO THE NW OF STONE. THE G-1 IS PROBABLY
THE ONE PLACE AS A REFERENCE MONUMENT ON E/W FENCE LINE
TO THE EAST. THIS FENCE LINE IS GONE. DO NOT KNOW WHO RESET
THE G-1 MON. 2000 ORTHO PHOTOS SHOWS E/W FENCE GOING TO
THE EAST IS GONE. 2006 NAP PHOTOS ALSO SHOWS E/W FENCE
GOING TO THE EAST IS GONE.

C) Was the corner restored through acceptance of (1) an obliterated evidence location, or, (2) a found perpetuated location?

ACCEPTED THE FD CUT LIMESTONE, BUT DID NOT ACCEPT THE G-1
MON. MY DISTANCE TO THE CUT LIMESTONE @ THE W 1/4 COR OF
SEC 11 IS WITHIN 0.02' OF LATHROP'S 2008 DISTANCE. THIS
SUPPORTS THE CONCLUSION THAT HE USED THE CUT LIMESTONE
AND DID NOT PLACE THE G-1 MON.



SEAL

Emboss

APRIL 7, 2011

SHEET 1 OF 3

CORNER CODE G-21

UN539 W1/4CORSEC12

D) Describe any material discrepancy between the location of the corner as restored or reestablished and the location of that corner as previously restored or reestablished by distance and direction. Show the discrepancy on the plan view drawing under (a), above. Show the distances between the corner as previously restored or reestablished and (1) the corner as restored or reestablished, and (2) to at least 4 of the witness monuments shown on the drawing in (a), above.

THE G-1 MON IS NOT THE CORNER BUT IS CLOSE TO THE CUT LIMESTONE. IN 2008 LATHROP DID TWO DIFFERENT SURVEYS AND ON BOTH CALLS FOR THE CUT LIMESTONE. HE DID NOT FILE A U.S. PUBLIC MONUMENT RECORD AS REQUIRED BY STATUTES. MY DISTANCE BETWEEN THE FOUND CUT LIMESTONES @ THE W & E 1/4 CORNES OF SEC 11 IS CLOSER TO LATHROP'S DISTANCE THAN THE DISTANCE TO THE G-1 MONUMENT. THE G-1 MON WAS PROBABLY RECOVERED FROM THE REMOVAL OF THE E/W FENCE GOING EAST. THE LAND OWNER MAY HAVE PLACED IT NEAR THE FENCE INTERSECTION.

(E) Was the corner reestablished through lost corner proportionate methods? If so, show the method, including the directions and distances to other public land survey corners used as evidence or used for proportioning the corner location.

NO

I, **Donald Barnes**, hereby certify that the corner location as identified by the corner code index was determined by me under my direction and control and that this U.S. Public Land Survey Monument Record is correct and complete to the best of my knowledge and belief.


SEAL

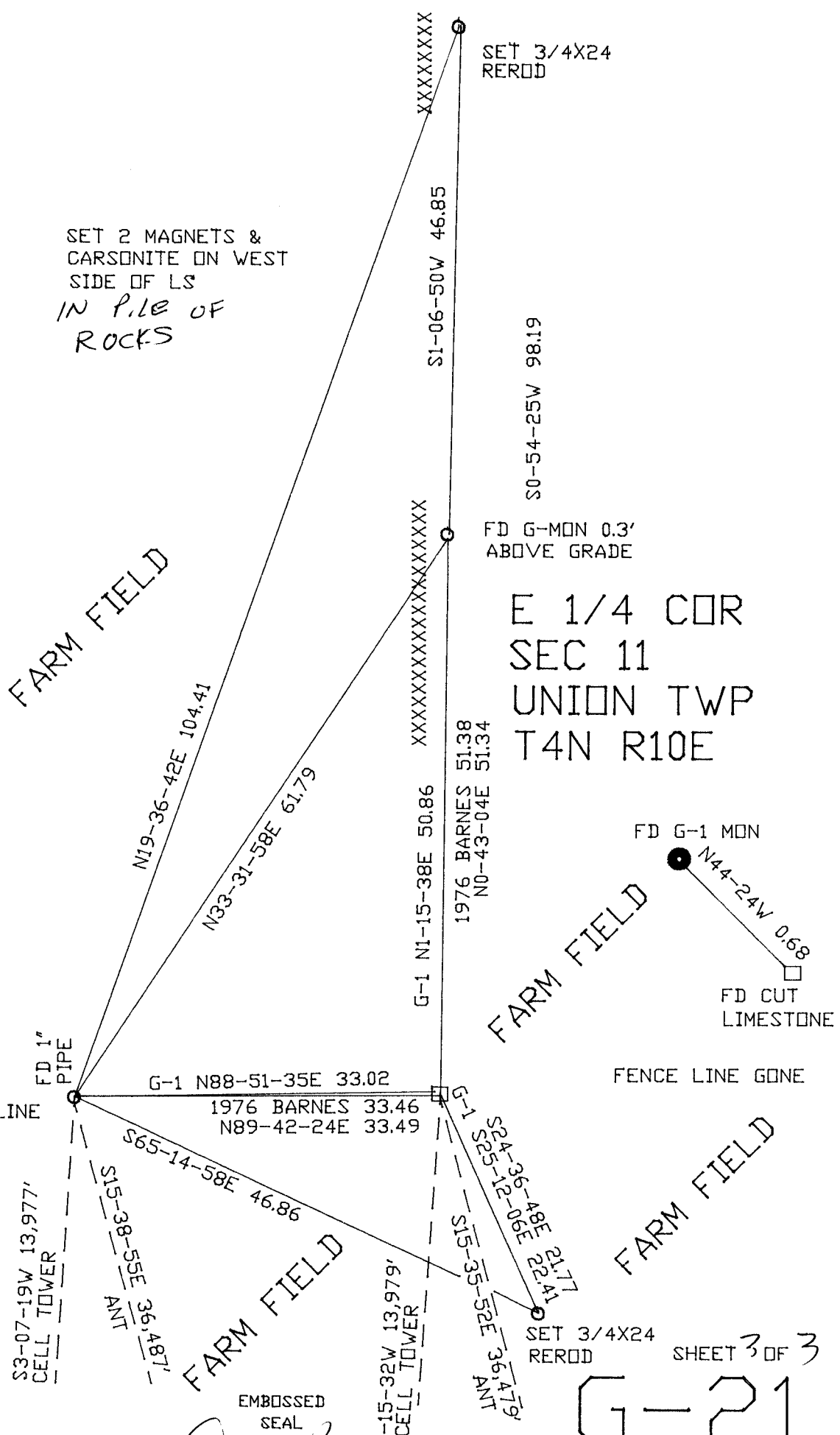
SHEET 2 OF 3

Emboss

APRIL 7, 2011

CORNER CODE **G-21**

A.E. 7.08 REQUIREMENT



SET 2 MAGNETS &
CARSONITE ON WEST
SIDE OF LS
IN PILE OF
ROCKS

SET 3/4X24
REROD

FD G-MON 0.3'
ABOVE GRADE

E 1/4 COR
SEC 11
UNION TWP
T4N R10E

FD G-1 MON

FD CUT
LIMESTONE

FENCE LINE GONE

SET 3/4X24
REROD

SHEET 3 OF 3

G-21

EMBOSSED
SEAL

Ronald Barnes
Apr 7, 2011