

U.S. PUBLIC LAND SURVEY MONUMENT RECORD

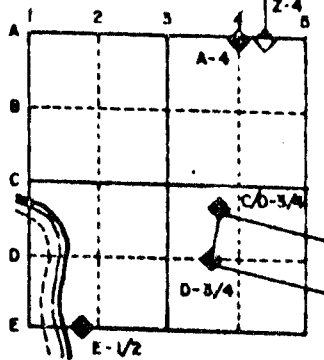
For Public Land Survey Corners in the
T. 2 N., R. 12 E.

CORNER CODE INDEX

	1	2	3	4	5	6	7	8	9	10	11	12	13	14	15	16	17	18	19	20	21	22	23	24	25
A																									
B																									
C	6																								
D																									
E																									
F																									
G	7																								
H																									
I																									
J																									
K																									
L	18																								
M																									
N																									
O																									
P	19	20																							
Q																									
R																									
S																									
T	30	29	28																						
U																									
V																									
W																									
X	31	32	33																						
Y																									
Z																									

PLACE MONUMENT SYMBOL (◆) AT PROPER LOCATION ON ABOVE INDEX

EXAMPLE



Rock TWP
ROCK COUNTY WI

IF AVAILABLE
STATE PLANE COORDINATES

North (Y) _____ Eleve. (Z) _____
 East (X) _____ Zone _____
 Hor. Datum _____ Vert. Datum _____

e.)

◆ CORNER MONUMENT

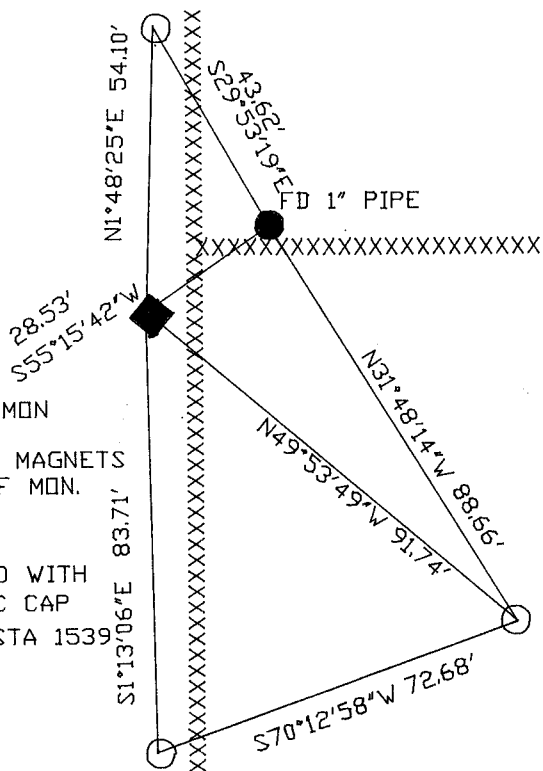
○ WITNESS MONUMENT

BEARINGS ARE BASED ON: TOWNSHIP PROJECT



○ 3/4 X 24 REROD WITH
 ORANGE PLASTIC CAP
 OBSERVATION SHEET STA 1539

FD ALUM MON
 1.5' DEEP
 PLACED 2 MAGNETS
 ON TOP OF MON.



SHEET ___ OF ___

CORNER CODE: R7

(B) Describe any record evidence, monument evidence, occupational evidence, testimonial evidence or any other material evidence you considered, and whether the monument was found or placed.

1860 RUGER VOL 1 PG 137 SET LIMESTONE 10X5X2 1/2 ON TOP LIMESTONE LAID FLAT AND TOOK WITNESS TREES BUR OAK 6 S47-15W 31.

1874 RUGER VOL 2 PG 175 FOUND CORNER ESTABLISHED BY SELF IN FORMER SURVEY. DROVE NEW STAKE DEEP, LAID FLAT LIMESTONE ON TOP OF STAKE AND PUT ON TOP OF FLAT LIMESTONE A LIMESTONE 10X5X2 1/2.

1972 LEE VOL 4 PG 578 SET CAST IRON MONUMENT SHOWS S89-13-05E 2672.91 TO NW COR SECTION 29, 2672.91 TO NE CORNER SECTION 29, AND 2635.48 TO CENTER OF SECTION 29.

1976 BARNES VOL 5 PG 117. FOUND DISTURBED CAST IRON MONUMENT. SET BERNTSEN W-1-B MONUMENT 1.5" DEEP. REFERENCED WITH TIES.

1981 BARNES VOL 6 PG 144. SHOWS COMB'S 1972 DISTANCE OF 2635.48 TO CENTER OF SECTION 29.

FOUND ALUMINUM MONUMENT.

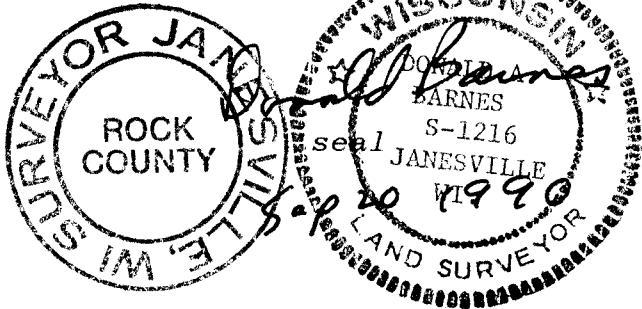
C) Was the corner restored through acceptance of (1) an obliterated evidence location, or, (2) a found perpetuated location?

ACCEPTED FOUND MONUMENT.

D) Describe any material discrepancy between the location of the corner as restored or reestablished and the location of that corner as previously restored or reestablished by distance and direction. Show the discrepancy on the plan view drawing under (a), above. Show the distances between the corner as previously restored or reestablished and (1) the corner as restored or reestablished, and (2) to at least 4 of the witness monuments shown on the drawing in (a), above.

(E) Was the corner reestablished through lost corner proportionate methods? If so, show the method, including the directions and distances to other public land survey corners used as evidence or used for proportioning the corner location.

I, Donald Barnes, hereby certify that the corner points as identified by the corner code index were, in a field survey on, July 20, 1990, established, re-established, monumented, re-monumented, recovered or restored as expressed below and in conformance with the regulations and rules as required in the current manual of survey instructions of the United States Department of the Bureau of Land Management.



AFFIX YOUR LAND SURVEYOR SEAL

COUNTY SURVEYOR FILING DATA

Date of computer entry _____

Date microfilmed _____

Number of included sheets _____
CORNER CODE

R 7