

# U.S. PUBLIC LAND SURVEY MONUMENT RECORD

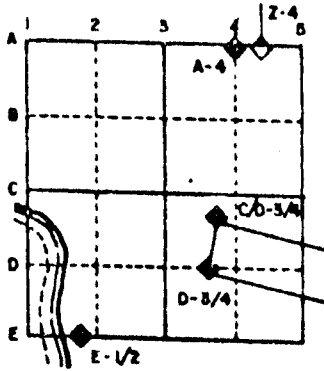
For Public Land Survey Corners in the  
T. 2 N., R. 12 E.

## CORNER CODE INDEX

1	2	3	4	5	6	7	8	9	10	11	12	13	14	15	16	17	18	19	20	21	22	23	24	25
A																								
B	6	5	4	3	2																			
C																								
D																								
E																								
F																								
G	7	8	9	10	11	12																		
H																								
I																								
J																								
K	16	17	18	15	14	13																		
L																								
M																								
N																								
O																								
P	19	20	21	22	23	24																		
Q																								
R																								
S	30	29	28	27	26	25																		
T																								
U																								
V																								
W																								
X	31	32	33	34	35	36																		
Y																								
Z																								

PLACE MONUMENT SYMBOL (◆) AT PROPER LOCATION ON ABOVE INDEX

### EXAMPLE



ROCK TWP  
ROCK COUNTY WI

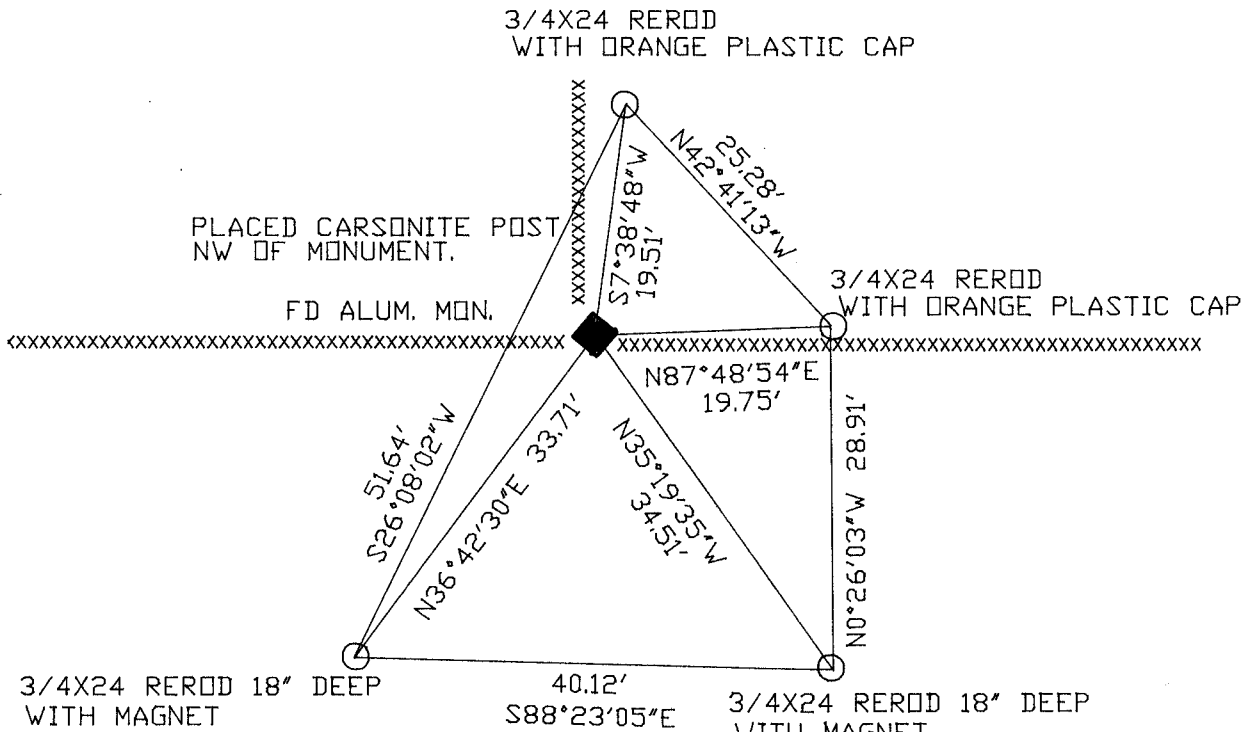
IF AVAILABLE  
STATE PLANE COORDINATES

North (Y) \_\_\_\_\_ Eleve. (Z) \_\_\_\_\_  
 East (X) \_\_\_\_\_ Zone \_\_\_\_\_  
 Hor. Datum \_\_\_\_\_ Vert. Datum \_\_\_\_\_

◆ CORNER MONUMENT

○ WITNESS MONUMENT

BEARINGS ARE BASED ON: TRIP PROJECT



FIELD BOOK #3 PG 39

(B) Describe any record evidence, monument evidence, occupational evidence, testimonial evidence or any other material evidence you considered, and whether the monument was found or placed.

1834 HARRISON ORIGINAL GOVERNMENT SURVEYOR. QUARTER SECTION CORNER. BURR OAK 12 S40E 63, BURR OAK 12 S67W 50 AND MARKED BURR O 12 AND BURR OAK 12. MEASURED 2663.10 TO SE AND SW CORNERS OF SECTION 17.

1860 RUGER VOL 1 PG 128. SHOWS A DISTANCE OF 2660.46' TO THE SW CORNER OF SECTION 17. USED CORNER TO SUBDIVIDE SECTION 17. SHOWS 2680.26 FROM THE W 1/4 CORNER TO THE CENTER OF SECTION 17.

1868 LOCKE VOL 1 PG 321 SET BURR OAK STAKE WITH HARDHEAD ON WEST. FOUND STUMP OF W. BEARING TREE AND STAKE. USED CORNER TO SUBDIVIDE SECTION 17. SHOWS 2690.16 FROM THE E 1/4 CORNER TO THE CENTER OF SECTION 17.

1874 RUGER VOL 2 PG 175 FOUND OLD STAKE AND HARDHEAD STONE ON WEST SIDE OF IT. DROVE NEW STAKE IN PLACE OF OLD ONE AND SURROUNDED IT WITH 4 HARDHEAD STONES.

1978 BARNES VOL 5 PG 485. FOUND ALUMINUM MONUMENT.

FOUND ALUMINUM MONUMENT.

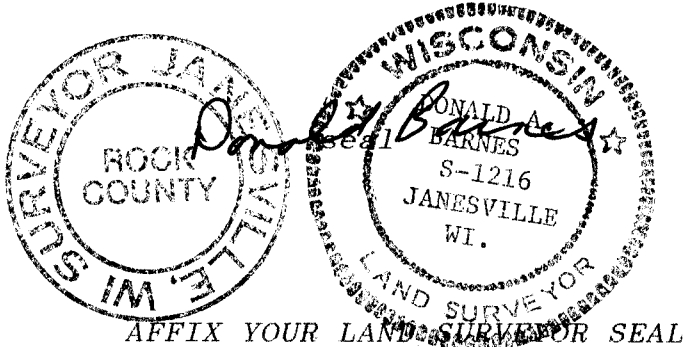
C) Was the corner restored through acceptance of (1) an obliterated evidence location, or, (2) a found perpetuated location?

ACCEPTED PERPETUATED LOCATION.

D) Describe any material discrepancy between the location of the corner as restored or reestablished and the location of that corner as previously restored or reestablished by distance and direction. Show the discrepancy on the plan view drawing under (a), above. Show the distances between the corner as previously restored or reestablished and (1) the corner as restored or reestablished, and (2) to at least 4 of the witness monuments shown on the drawing in (a), above.

(E) Was the corner reestablished through lost corner proportionate methods? If so, show the method, including the directions and distances to other public land survey corners used as evidence or used for proportioning the corner location.

I, Donald Barnes, hereby certify that the corner points as identified by the corner code index were, in a field survey on, October 30, 1990, established, re-established, monumented, re-monumented, recovered or restored as expressed below and in conformance with the regulations and rules as required in the current manual of survey instructions of the United States Department of Interior, Bureau of Land Management.



COUNTY SURVEYOR FILING DATA

Date of computer entry \_\_\_\_\_

Date microfilmed \_\_\_\_\_

Number of included sheets \_\_\_\_\_

CORNER CODE

