

# U.S. PUBLIC LAND SURVEY MONUMENT RECORD

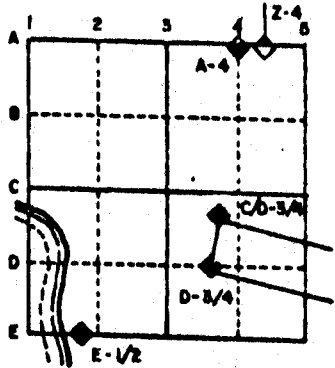
For Public Land Survey Corners in the  
T. 2 N., R. 12 E.

## CORNER CODE INDEX

	1	2	3	4	5	6	7	8	9	10	11	12	13	14	15	16	17	18	19	20	21	22	23	24	25
A																									
B																									
C	6																								
D		5																							
E			4																						
F				3																					
G					2																				
H																									
I	7																								
J		8																							
K			9																						
L				10																					
M					11																				
N						12																			
O							13																		
P								14																	
Q									15																
R										16															
S											17														
T												18													
U													19												
V														20											
W															21										
X																22									
Y																	23								
Z																		24							
																			25						
																				26					
																					27				
																						28			
																							29		
																								30	
																									31
																									32
																									33
																									34
																									35
																									36

PLACE MONUMENT SYMBOL (◆) AT PROPER LOCATION ON ABOVE INDEX

### EXAMPLE



ROCK TWP  
ROCK COUNTY WI

### IF AVAILABLE STATE PLANE COORDINATES

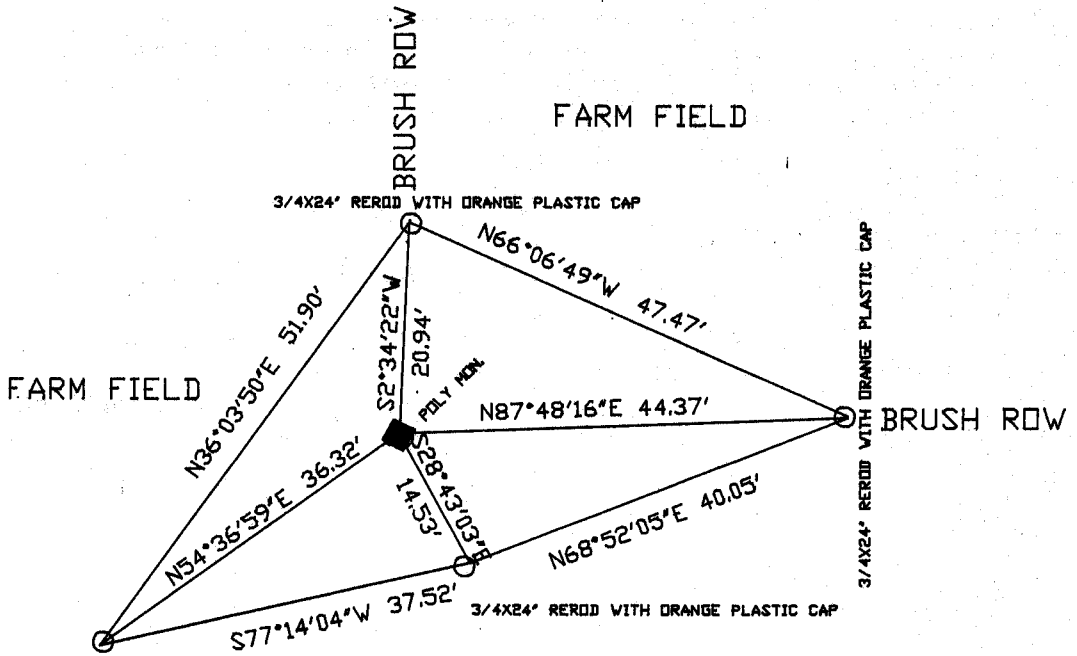
North (Y) \_\_\_\_\_ Eleve. (Z) \_\_\_\_\_  
 East (X) \_\_\_\_\_ Zone \_\_\_\_\_  
 Hor. Datum \_\_\_\_\_ Vert. Datum \_\_\_\_\_

e.)

◆ CORNER MONUMENT

○ WITNESS MONUMENT

BEARINGS ARE BASED ON: Twp Project



PLACED PIN THAT WAS AT CORNER 18" DEEP WITH MAGNET

SEE OBSERVATION 549, TWP PROJECT

◆ FOUND PIN WITH WHITE BRICK ON NORTH & EAST SIDE. REPLACED WITH POLY MON. PLACED WHITE PLASTIC POST ON SOUTH SIDE

# MICROFILMED

SHEET \_\_\_ OF \_\_\_

CORNER CODE: J 17

(B) Describe any record evidence, monument evidence, occupational evidence, testimonial evidence or any other material evidence you considered, and whether the monument was found or placed.

1836 LYON ORIGINAL GOVERNMENT SURVEYOR. FIELD NOTES - SET POST CORNER TO SECTIONS 10,11,14,& 15 AND MADE MOUND OF EARTH AND SOD. MEASURED 2640 TO S 1/4 CORNER OF SECTION 11 AND 2640 TO S 1/4 CORNER OF SECTION 10

1867 LOCKE VOL 1 PG 284. FOUND STAKE. SET BURR OAK STAKE AND SURROUNDED IT BY 3 WHITE BRICK. 2856.35' TO E 1/4 CORNER SECTION 10 AND 2650.56 TO S 1/4 CORNER OF SECTION 10.

1883 RUGER VOL 2 PG 408 FOUND STAKE SURROUNDED BY 3 WHITE BRICK. SHOWS 2648.80 TO S 1/4 CORNER OF SECTION 10, 2661.12 TO S 1/4 CORNER OF SECTION 11, AND 2641.98 TO W 1/4 CORNER OF SECTION 11.

FOUND PIN WITH WHITE BRICK ON NORTH & EAST SIDE. REPLACED WITH POLY MONUMENT. PLACED WHITE PLASTIC POST ON SOUTH SIDE.

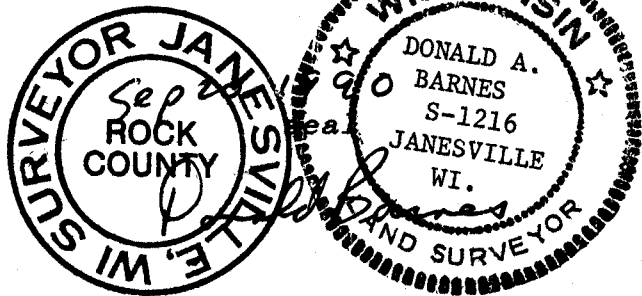
C) Was the corner restored through acceptance of (1) an obliterated evidence location, or, (2) a found perpetuated location?

ACCEPTED FOUND PIN.

D) Describe any material discrepancy between the location of the corner as restored or reestablished and the location of that corner as previously restored or reestablished by distance and direction. Show the discrepancy on the plan view drawing under (a), above. Show the distances between the corner as previously restored or reestablished and (1) the corner as restored or reestablished, and (2) to at least 4 of the witness monuments shown on the drawing in (a), above.

(E) Was the corner reestablished through lost corner proportionate methods? If so, show the method, including the directions and distances to other public land survey corners used as evidence or used for proportioning the corner location.

I, Donald Barnes, hereby certify that the corner points as identified by the corner code index were, in a field survey on, July 19,1990, established, re-established, monumented, re-monumented, recovered or restored as expressed below and in conformance with the regulations and rules as required in the current manual of survey instructions of the United States Department of Interior Bureau of Land Management.



AFFIX YOUR LAND SURVEYOR SEAL

COUNTY SURVEYOR FILING DATA

Date of computer entry \_\_\_\_\_

Date microfilmed \_\_\_\_\_

Number of included sheets \_\_\_\_\_  
CORNER CODE

517

66