

U.S. PUBLIC LAND SURVEY MONUMENT RECORD

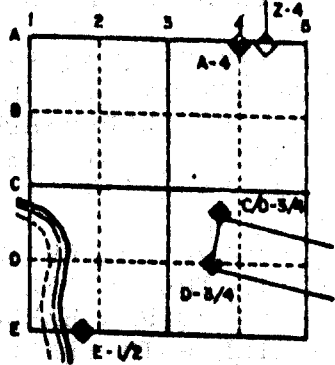
For Public Land Survey Corners in the
T. 2N., R. 12E.

CORNER CODE INDEX

	1	2	3	4	5	6	7	8	9	10	11	12	13	14	15	16	17	18	19	20	21	22	23	24	25
A																									
B																									
C	6																								
D		5																							
E			4																						
F				3																					
G					2																				
H																									
I																									
J																									
K																									
L																									
M																									
N																									
O																									
P																									
Q																									
R																									
S																									
T																									
U																									
V																									
W																									
X																									
Y																									
Z																									

PLACE MONUMENT SYMBOL (◆) AT PROPER LOCATION ON ABOVE INDEX

EXAMPLE



ROCK TWP
ROCK COUNTY WI

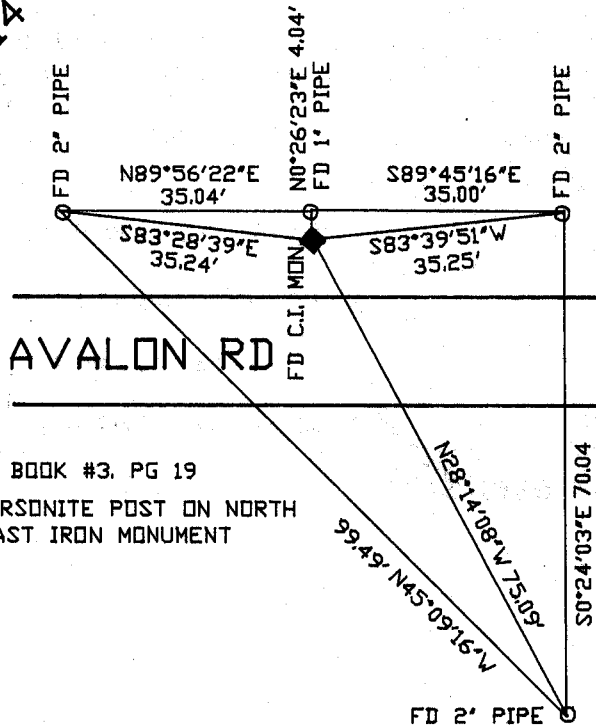
IF AVAILABLE
STATE PLANE COORDINATES

North (Y) _____ Eleve. (Z) _____
 East (X) _____ Zone _____
 Hor. Datum _____ Vert. Datum _____

e.) **◆** CORNER MONUMENT **○** WITNESS MONUMENT

BEARINGS ARE BASED ON: TOWNSHIP PROJECT

HSE# 2614



FIELD BOOK #3, PG 19
PLACED CARSONITE POST ON NORTH SIDE OF CAST IRON MONUMENT

MICROFILMED

SHEET ___ OF ___

CORNER CODE: L 17

(B) Describe any record evidence, monument evidence, occupational evidence, testimonial evidence or any other material evidence you considered, and whether the monument was found or placed.

1861 RUGER VOL 1 PG 168 SET RED HARDHEAD 15X8X6. SHOWS A DISTANCE OF 1324.62' TO N 1/6th CORNER OF THE SE 1/4 OF SEC 15.

1869 LOCKE VOL 1 PG 284. 1/4 POST AS SET BY RUGER WAS DUG OUT. SET IT IN FROM THE CORNER AND INTERMEDIATE 1/16th CORNER THAT IS TO THE SOUTH. SET RED HARDHEAD 16X14X8 AND SURROUNDED IT BY 4 SMALL LIMESTONES. SHOWS A DISTANCE OF 2657.16 TO THE SE AND 2856.37 TO THE NE CORNERS OF SECTION 15.

1867 LOCKE VOL 1 PG 289. FOUND CORNER AS SET BY SELF. SHOWS A DISTANCE OF 2650.56' TO THE CENTER OF SECTION 14.

1939 SUNNY VOL 3 PG 412. FOUND RED HARDHEAD AT CORNER 1' NORTH OF N. ROAD FENCE IN LINE WITH FENCE TO SOUTH. SHOWS A DISTANCE OF 2652.7' TO CENTER OF SECTION 14 AND 2663.4 TO THE SW CORNER OF SECTION 14.

1965 BATTERMAN VOL 4 PG 264 FOUND RED HARDHEAD. SHOWS A DISTANCE OF 2653.10' TO THE CENTER OF SECTION 14.

FOUND CAST IRON MONUMENT THAT IS IN HARMONY WITH LOCAL PLAT OF SURVEYS. PLACED CARSONITE POST.

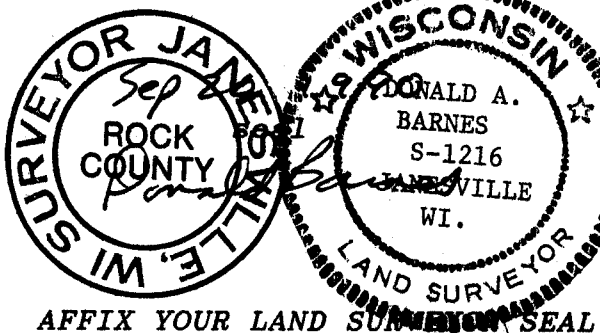
C) Was the corner restored through acceptance of (1) an obliterated evidence location, or, (2) a found perpetuated location?

ACCEPTED FOUND MONUMENT.

D) Describe any material discrepancy between the location of the corner as restored or reestablished and the location of that corner as previously restored or reestablished by distance and direction. Show the discrepancy on the plan view drawing under (a), above. Show the distances between the corner as previously restored or reestablished and (1) the corner as restored or reestablished, and (2) to at least 4 of the witness monuments shown on the drawing in (a), above.

(E) Was the corner reestablished through lost corner proportionate methods? If so, show the method, including the directions and distances to other public land survey corners used as evidence or used for proportioning the corner location.

I, Donald Barnes, hereby certify that the corner points as identified by the corner code index were, in a field survey on, July 20, 1990, established, re-established, monumented, re-monumented, recovered or restored as expressed below and in conformance with the regulations and rules as required in the current manual of survey instructions of the United States Department of Interior, Bureau of Land Management.



COUNTY SURVEYOR FILING DATA

Date of computer entry _____

Date microfilmed _____

Number of included sheets _____

CORNER CODE

AFFIX YOUR LAND SURVEYOR SEAL

217