



(B) Describe any record evidence, monument evidence, occupational evidence, testimonial evidence or any other material evidence you considered, and whether the monument was found or placed.

- 1870 RUGER VOL 2 PG 21 SHOWS A DISTANCE OF 2653.20 TO THE CENTER OF SECTION 11.  
1870 RUGER VOL 2 PG 37 FOUND OLD STAKE. SET LIMESTONE 13X7X3 AND SURROUNDED IT WITH 3 LIMESTONES. SHOWS A DISTANCE OF 2653.20 TO CENTER OF SECTION 11.  
1883 RUGER VOL 2 PG 408 FOUND LIMESTONE SURROUNDED BY 3 LIMESTONES. SHOWS A DISTANCE OF 2641.98 TO SW CORNER OF SECTION 11 AND 1326.60' TO THE N 1/16th CORNER OF THE SE 1/4 OF SECTION 11.  
1920 ELY "RIVER HEIGHTS ADD" BK 10 PG 18 FOUND PIPE.  
1932 SUNNY VOL 3 PG 214 FOUND IRON PIPE AT JUNCTION OF FENCE.  
1956 BATTERMAN JR. "VALLEY PARK" BK 18 PG 19. SHOWS PIPE.  
1959 BATTERMAN JR. "TERRY MEADOWS" BK 18 PG 8. SHOWS PIPE.  
1965 BATTERMAN VOL 4 PG 237 FOUND 2" PIPE. REFERENCED SAME.  
1965 THOM CSM VOL 1 PG 121. DOESN'T STATE WHAT HE FOUND.

FOUND PK ON NORTH AND WEST SIDE OF MAN HOLE COVER. A 2 INTERSECTION FROM THOSE PKs IS THE POSITION OF THE CORNER. THIS IS IN HARMONY WITH CSM VOL 1 PG 121 AND THE R/W AS CALLED FOR IN THE SUBDIVISION PLATS.

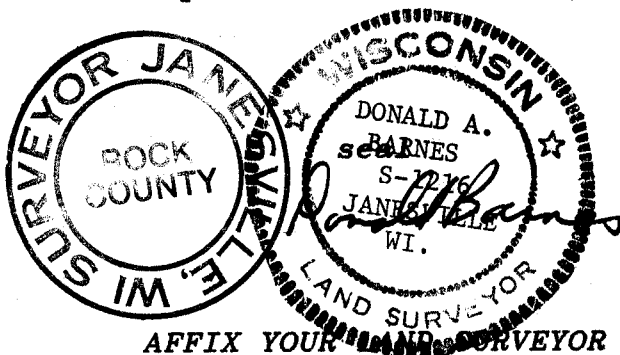
C) Was the corner restored through acceptance of (1) an obliterated evidence location, or, (2) a found perpetuated location?

ACCEPTED FOUND LOCATION.

D) Describe any material discrepancy between the location of the corner as restored or reestablished and the location of that corner as previously restored or reestablished by distance and direction. Show the discrepancy on the plan view drawing under (a), above. Show the distances between the corner as previously restored or reestablished and (1) the corner as restored or reestablished, and (2) to at least 4 of the witness monuments shown on the drawing in (a), above.

(E) Was the corner reestablished through lost corner proportionate methods? If so, show the method, including the directions and distances to other public land survey corners used as evidence or used for proportioning the corner location.

I, Donald Barnes, hereby certify that the corner points as identified by the corner code index were, in a field survey on, SEPTEMBER 4, 1991, established, re-established, monumented, re-monumented, recovered or restored as expressed below and in conformance with the regulations and rules as required in the current manual of survey instructions of the United States Department of Interior, Bureau of Land Management.



AFFIX YOUR LAND SURVEYOR SEAL

COUNTY SURVEYOR FILING DATA

Date of computer entry \_\_\_\_\_

Date microfilmed \_\_\_\_\_

Number of included sheets \_\_\_\_\_  
CORNER CODE

G17

10F3

**U.S. PUBLIC LAND SURVEY MONUMENT RECORD**

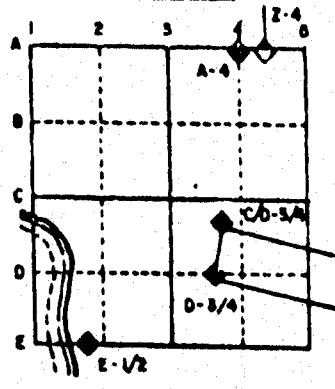
For Public Land Survey Corners in the  
T. 2 N., R. 12 E.

**CORNER CODE INDEX**

	1	2	3	4	5	6	7	8	9	10	11	12	13	14	15	16	17	18	19	20	21	22	23	24	25
A																									
B																									
C	6																								
D		5																							
E			4																						
F				3																					
G					2																				
H	7																								
I		6																							
J			5																						
K				4																					
L	8																								
M		7																							
N			6																						
O				5																					
P	9																								
Q		8																							
R			7																						
S				6																					
T	10																								
U		9																							
V			8																						
W				7																					
X	11																								
Y		10																							
Z			9																						

PLACE MONUMENT SYMBOL (◆) AT PROPER LOCATION ON ABOVE INDEX

**EXAMPLE**



ROCK TWP  
ROCK COUNTY WI

IF AVAILABLE  
STATE PLANE COORDINATES

North (Y) \_\_\_\_\_ Elev. (Z) \_\_\_\_\_  
 East (X) \_\_\_\_\_ Zone \_\_\_\_\_  
 Hor. Datum \_\_\_\_\_ Vert. Datum \_\_\_\_\_

◆ CORNER MONUMENT

○ WITNESS MONUMENT

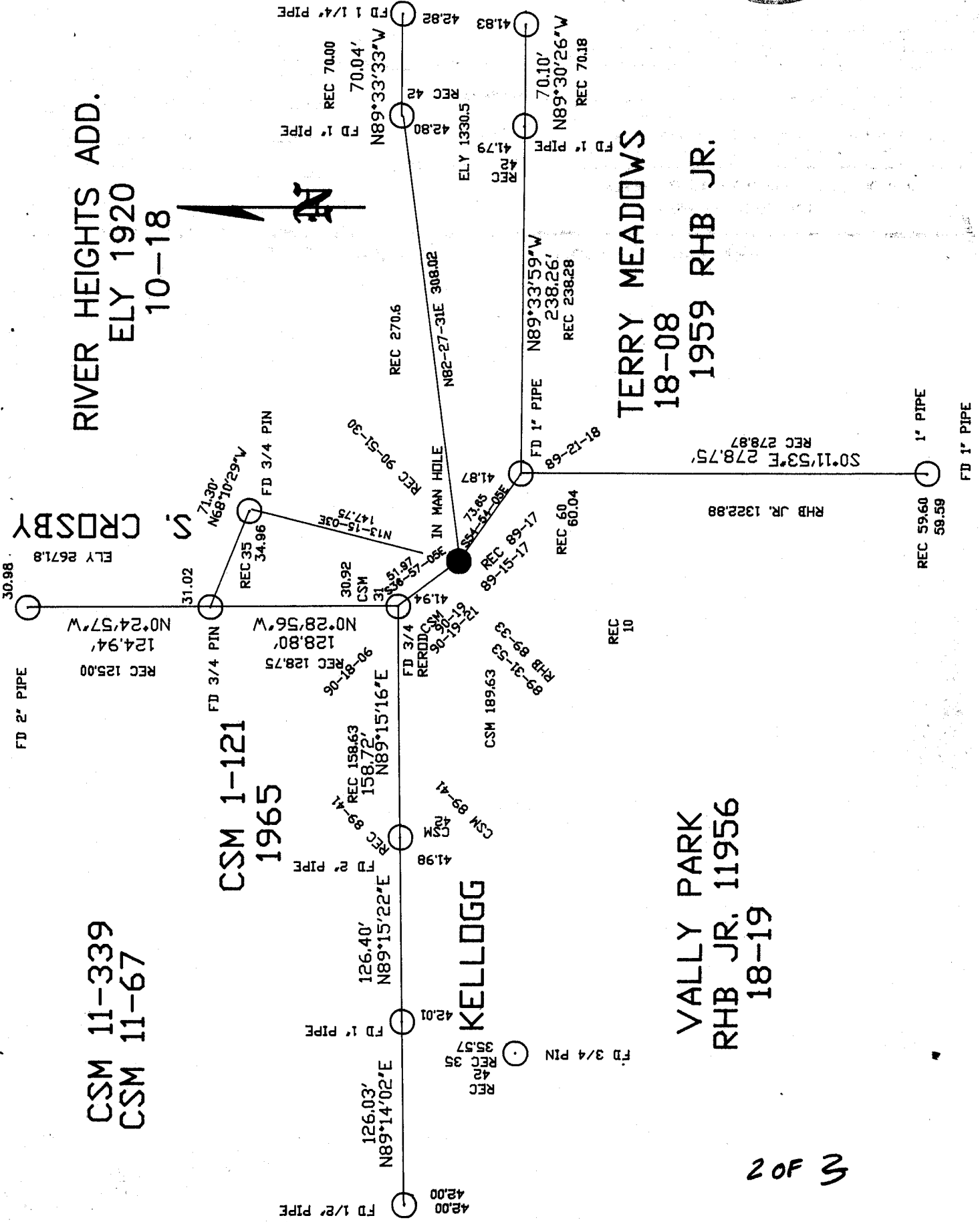
BEARINGS ARE BASED ON: Township Project

**MICROFILMED**

SHEET 2 OF 3

CORNER CODE: 617

RIVER HEIGHTS ADD.  
ELY 1920  
10-18



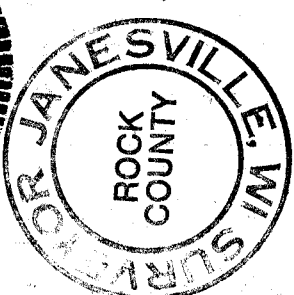
CSM 11-339  
CSM 11-67

CSM 1-121  
1965

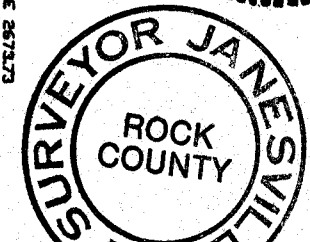
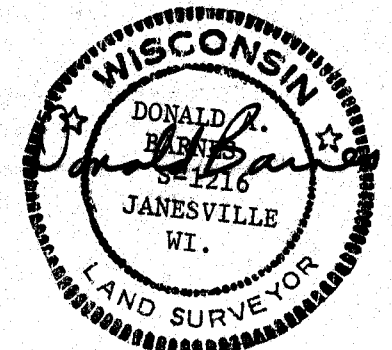
KELLOGG

VALLY PARK  
RHB JR. 11956  
18-19

TERRY MEADOWS  
18-08  
1959 RHB JR.



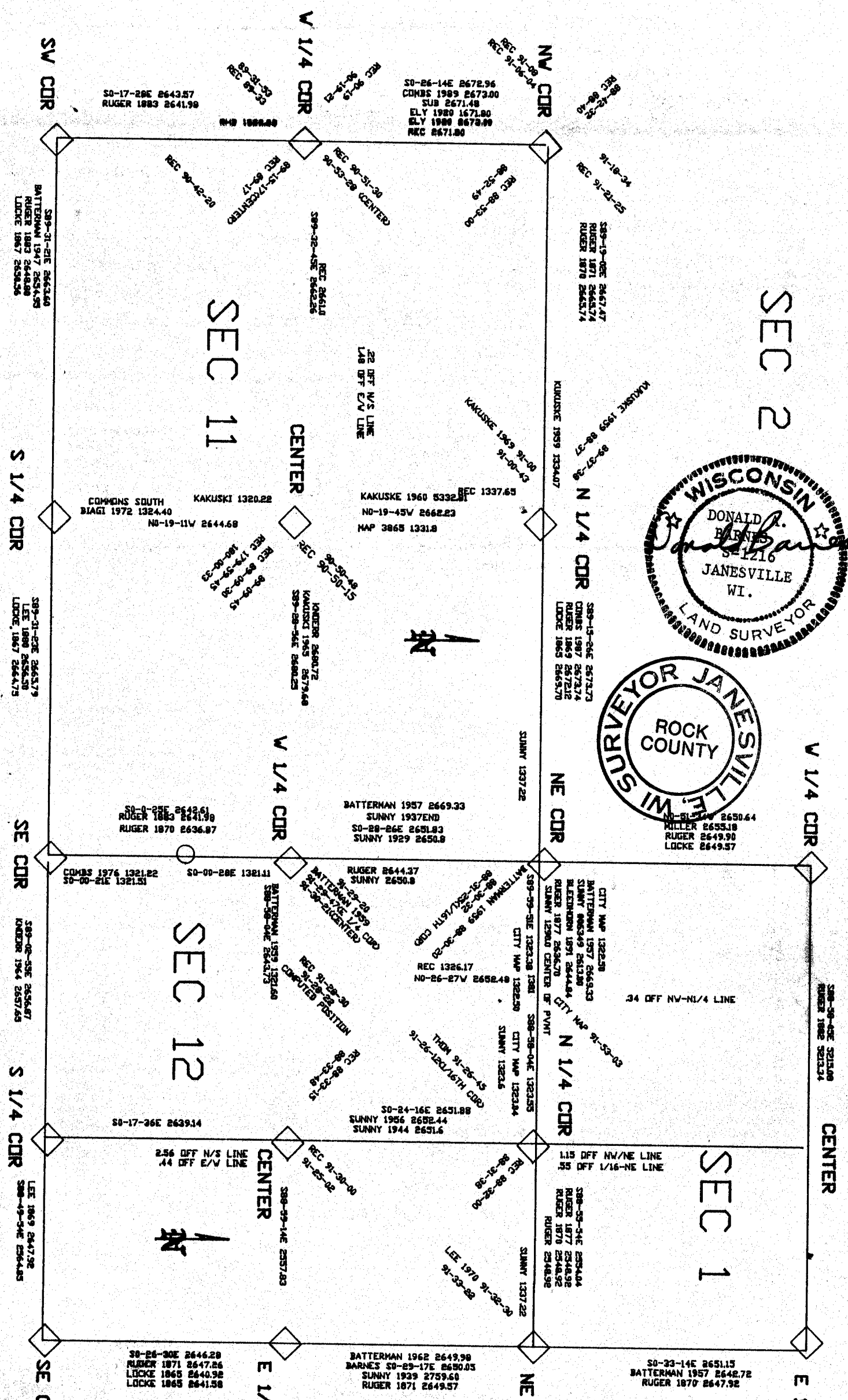
SEC 2



SEC 11

SEC 12

SEC 1



3 OF 3

G 17