

Paper weight-110# (minimum)

Black nonfading ink required

# U.S. PUBLIC LAND SURVEY MONUMENT RECORD

For Public Land Survey Corners In:  
**T. 4 N. R. 10 E. 4th P.M.**  
CORNER CODE INDEX

WI ADMINISTRATIVE CODE A-E 7.08 REQUIREMENT  
REV 10/23/2004 USMONREC.DWG

UNION TWP

**ROCK COUNTY WI**

IF AVAILABLE  
ROCK COUNTY COORDINATES PREFERRED

|   |   |   |   |   |   |   |   |   |   |    |    |    |    |    |    |    |    |    |    |    |    |    |    |    |    |   |
|---|---|---|---|---|---|---|---|---|---|----|----|----|----|----|----|----|----|----|----|----|----|----|----|----|----|---|
| A | 1 | 2 | 3 | 4 | 5 | 6 | 7 | 8 | 9 | 10 | 11 | 12 | 13 | 14 | 15 | 16 | 17 | 18 | 19 | 20 | 21 | 22 | 23 | 24 | 25 | A |
| B |   | 6 |   |   |   |   | 5 |   |   |    |    | 4  |    |    |    | 3  |    |    | 2  |    |    |    | 1  |    |    | B |
| C |   |   |   |   |   |   |   |   |   |    |    |    |    |    |    |    |    |    |    |    |    |    |    |    |    | C |
| D |   |   |   |   |   |   |   |   |   |    |    |    |    |    |    |    |    |    |    |    |    |    |    |    |    | D |
| E |   |   |   |   |   |   |   |   |   |    |    |    |    |    |    |    |    |    |    |    |    |    |    |    |    | E |
| F |   |   |   |   |   |   |   |   |   |    |    |    |    |    |    |    |    |    |    |    |    |    |    |    |    | F |
| G |   |   |   |   |   |   |   |   |   |    |    |    |    |    |    |    |    |    |    |    |    |    |    |    |    | G |
| H |   |   |   |   |   |   |   |   |   |    |    |    |    |    |    |    |    |    |    |    |    |    |    |    |    | H |
| J |   |   |   |   |   |   |   |   |   |    |    |    |    |    |    |    |    |    |    |    |    |    |    |    |    | J |
| K |   |   |   |   |   |   |   |   |   |    |    |    |    |    |    |    |    |    |    |    |    |    |    |    |    | K |
| L |   |   |   |   |   |   |   |   |   |    |    |    |    |    |    |    |    |    |    |    |    |    |    |    |    | L |
| M |   |   |   |   |   |   |   |   |   |    |    |    |    |    |    |    |    |    |    |    |    |    |    |    |    | M |
| N |   |   |   |   |   |   |   |   |   |    |    |    |    |    |    |    |    |    |    |    |    |    |    |    |    | N |
| O |   |   |   |   |   |   |   |   |   |    |    |    |    |    |    |    |    |    |    |    |    |    |    |    |    | O |
| P |   |   |   |   |   |   |   |   |   |    |    |    |    |    |    |    |    |    |    |    |    |    |    |    |    | P |
| Q |   |   |   |   |   |   |   |   |   |    |    |    |    |    |    |    |    |    |    |    |    |    |    |    |    | Q |
| R |   |   |   |   |   |   |   |   |   |    |    |    |    |    |    |    |    |    |    |    |    |    |    |    |    | R |
| S |   |   |   |   |   |   |   |   |   |    |    |    |    |    |    |    |    |    |    |    |    |    |    |    |    | S |
| T |   |   |   |   |   |   |   |   |   |    |    |    |    |    |    |    |    |    |    |    |    |    |    |    |    | T |
| U |   |   |   |   |   |   |   |   |   |    |    |    |    |    |    |    |    |    |    |    |    |    |    |    |    | U |
| V |   |   |   |   |   |   |   |   |   |    |    |    |    |    |    |    |    |    |    |    |    |    |    |    |    | V |
| W |   |   |   |   |   |   |   |   |   |    |    |    |    |    |    |    |    |    |    |    |    |    |    |    |    | W |
| X |   |   |   |   |   |   |   |   |   |    |    |    |    |    |    |    |    |    |    |    |    |    |    |    |    | X |
| Y |   |   |   |   |   |   |   |   |   |    |    |    |    |    |    |    |    |    |    |    |    |    |    |    |    | Y |
| Z |   |   |   |   |   |   |   |   |   |    |    |    |    |    |    |    |    |    |    |    |    |    |    |    |    | Z |

North \_\_\_\_\_ Elev. \_\_\_\_\_

East \_\_\_\_\_

Hor. Datum \_\_\_\_\_ Vert. Datum \_\_\_\_\_

LATITUDE \_\_\_\_\_ ELLIPS. HT. \_\_\_\_\_

LONGITUDE \_\_\_\_\_

NAD83(91) \_\_\_\_\_ NETWORK ADJ. YR 2010

GPS (X) \_\_\_\_\_ TRAVERSE (X) X

BASED ON THE FOLLOWING CONTROL:

PLACE MONUMENT SYMBOL **◆** AT PROPER LOCATION ON ABOVE INDEX

**◆** CORNER MONUMENT

**○** WITNESS MONUMENT

(a)

BEARINGS ARE BASED ON: ROCK COUNTY PROJECTION

NE 25  
T4N R9E  
GREEN COUNTY

FIELD BOOK \_\_\_\_\_ PAGE # \_\_\_\_\_

OR OBSERVATION SHEET \_\_\_\_\_

SHEET 1 OF 3

SHOW A PLAN VIEW DRAWING DEPICTING THE CORNER MONUMENT AND SURROUNDING PHYSICAL FEATURES, INCLUDING THE EXCAVATION AREA AND DEPTH.

PLANNING & ZONING COMMITTEE ADOPTED THIS FORM ON 12/2/1982

CORNER CODE N/0-1

UN 6593 NECORSEC25 T4N R9E GREEN COUNTY

(B) Describe any record evidence, monument evidence, occupational evidence, testimonial evidence or any other material evidence you considered, and whether the monument was found or placed.

- 1833 MULLETT T4N R9E [SEP] VAR 8-10E NORTH ON EAST SIDE OF SEC 25  
2640 SET 1/4 SEC POST IN PRAIRIE AND MADE MOUND  
5280 SET POST TO SECTIONS 24 & 25 IN PRAIRIE & MADE MOUND.  
LAND & C SAME AS LAST MILE NOTE NEEDLE ATTRACTED 30' WEST
- 1833 MULLETT (SEP) NORTH ON EAST SIDE OF SEC 24  
2640 SET 1/4 SECTION POST MADE A MOUND  
5280 SET POST FOR CORNER TO SECTIONS 13 & 24 AND MADE A MOUND.  
LAND @ C SAME  
NEEDLE ATTRACTED 75' WEST  
NORTH ON EAST SIDE SECTION 13  
2640 SET 1/4 SECTION POST MADE A MOUND  
2937 ROAD FROM MINERAL POINT TO KOSCONONG E & W  
4620 LEAVE PRAIRIE  
5280 SET POST FOR CORNER TO SECTIONS 12&13 BUR OAK 24 S17E 80.52' & BUR OAK 12 N43E 89.76'  
LAND ROLLING RICH DRY PRAIRIE NORTH OF PRAIRIE THINLY TIMBERED WITH BUR OAK  
NEEDLE ATTRACTED 100' WEST
- 1833 (NOV) HARRISON T4N R9E EAST ON RAND. BETWEEN SECS 25 & 24 T4N R9E 4TH MER.  
PROBLEM WITH NOTES ON THE WEB SITE
- 1833 (NOV) HARRISON T4N R10E 4<sup>TH</sup> MER. WEST BETWEEN SECS 18 & 19  
2640.00 QUARTER SEC COR. SET POST & RAISED MOUND  
5491.20 INT. BNDY LINE OF RANGE 9E 950.40' N OF P SET COR TO SECS 18 & 19 POST & RAISED MOUND LAND LEVEL & SOMEWHAT WET 2ND RATE PRAIRIE GROWTH GRASS & WEEDS
- 1870 RUGER AUG 25 REMON-86 AUGUST 25 1870 NORTH ON WEST LINE OF SW 1/4 SEC 19 ON A VAR6-10; AT 2602.05 INTERSECTED QUARTER LINE 6.6' WEST OF QUARTER CORNER. FOUND HARD HEAD STONE AT CORNER SET BY SELF IN SURVEY. COR VAR 6-01  
NORTH ON WEST LINE OF NW 1/4 SEC 19 ON A VAR 5-50; AT  
2601.39 INTERSECTED NORTH BOUNDARY LINE 5.28' EAST OF CORNER. COR VAR 5-57
- 1976 TALARCZYK #5150 SEC COR TIES. COR SET BY PROPORTIONATE MEASUREMENT & EXISTING PHYSICAL EVIDENCE. SET ALUMINUM MONUMENT. REFERENCED MONUMENT. MONUMENT IS 4' SOUTH OF CENTER OF E/W PVMT. TO THE WEST.
- 1977 BARNES FB#1 PG 22 FD ALUM @ SW COR SEC 18 & ALUM @ NE COR SEC 25 T4N R9E. MEASURED 874.58 BETWEEN MONUMENTS.

FD PK & REFERENCE PINS. SINCE I DID NOT NEED THE CORNER I DID NOT UNCOVER THE ALUM. MON.

SEAL  
D. Barnes  
Barnes

SHEET 1 OF 3

CORNER CODE N/O-1

Aug 16, 2011

UN 6593 NECORSEC25 T4N R9E GREEN COUNTY

C) Was the corner restored through acceptance of (1) an obliterated evidence location, or, (2) a found perpetuated location?

DID NOT ACCEPT NOR REJECT PK OR ALUM. MONUMENT.

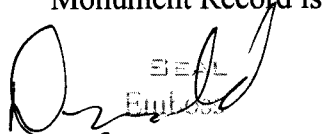
D) Describe any material discrepancy between the location of the corner as restored or reestablished and the location of that corner as previously restored or reestablished by distance and direction. Show the discrepancy on the plan view drawing under (a), above. Show the distances between the corner as previously restored or reestablished and (1) the corner as restored or reestablished, and (2) to at least 4 of the witness monuments shown on the drawing in (a), above.

BY USING MY 1977 DISTANCE TO THE SW COR SEC 18 I COMPUTED THE ALUM MON. AS S33-30E 0.09 OF THE FD PK. I BELIEVE THE PK WAS PLACED AT THE RECORD DISTANCES FROM THE SW & NW REFERENCE PINS. HOWEVER THE NW REFERENCE PIN IS LEANING TO THE NE, WHICH WOULD PLACE THE POINT INTERSECTION NORTH OF THE ALUM.

(E) Was the corner reestablished through lost corner proportionate methods? If so, show the method, including the directions and distances to other public land survey corners used as evidence or used for proportioning the corner location.

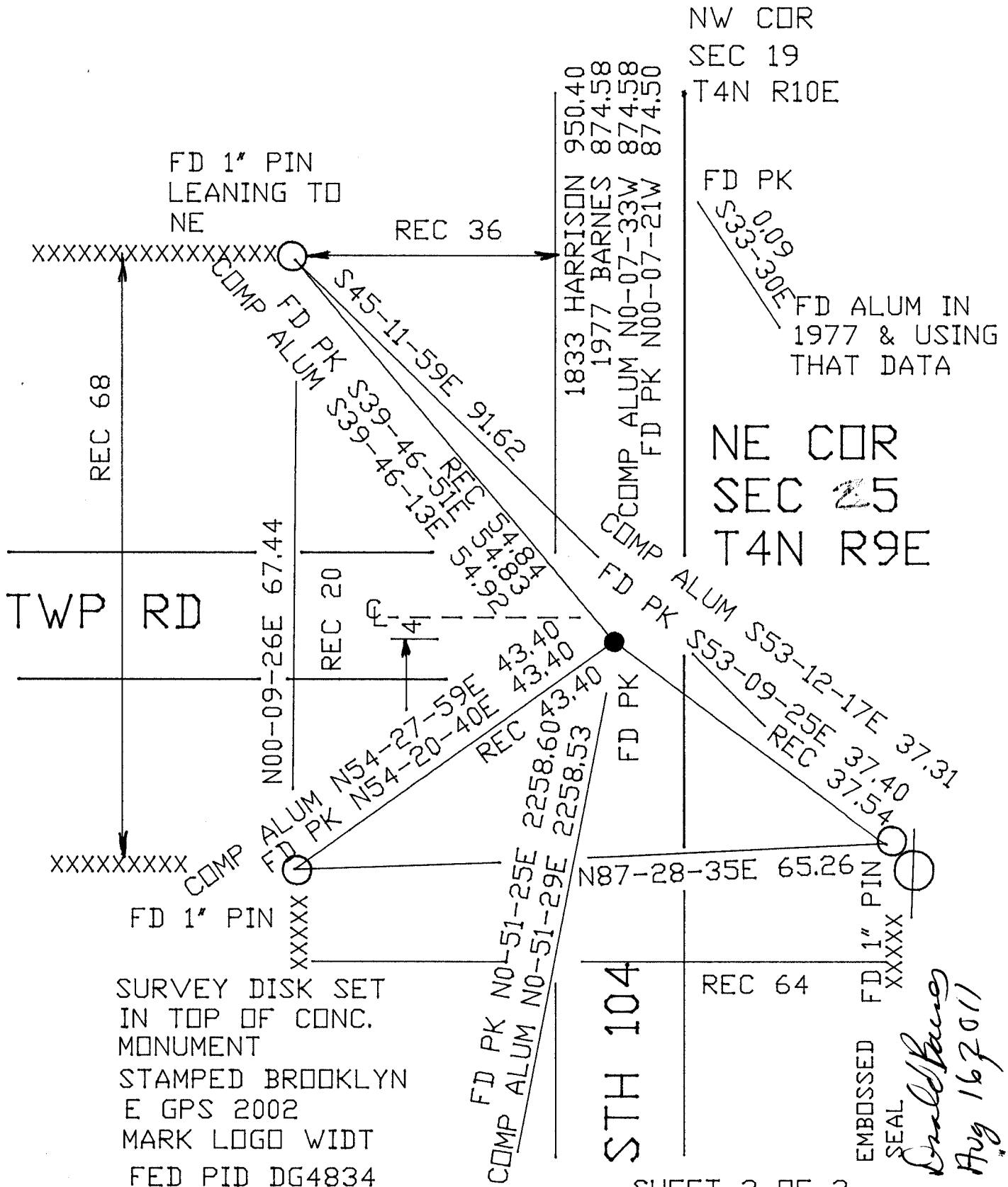
I, Donald Barnes, hereby certify that the corner location as identified by the corner code index was determined by me under my direction and control and that this U.S. Public Land Survey Monument Record is correct and complete to the best of my knowledge and belief.

SHEET 2 OF 3

  
Barnes  
Aug 16, 2011

CORNER CODE N/O-1

A.E. 7.08 REQUIREMENT



NW COR  
SEC 19  
T4N R10E

FD PK  
S33-30E 91.62  
FD ALUM IN  
1977 & USING  
THAT DATA

NE COR  
SEC 25  
T4N R9E

SURVEY DISK SET  
IN TOP OF CONC.  
MONUMENT  
STAMPED BROOKLYN  
E GPS 2002  
MARK LOGO WIDT  
FED PID DG4834  
1976 TALARCZYK #5150  
OBSERVATION SHEET #138  
& #360

STH 104

SHEET 3 OF 3

EMBOSSED  
SEAL  
*Donald Barnes*  
Aug 16 2011

N / □ 1