

Paper weight-110# (minimum)

Black nonfading ink required

U.S. PUBLIC LAND SURVEY MONUMENT RECORD

For Public Land Survey Corners In:
T. 4 N. R. 10 E. 4th P.M.
CORNER CODE INDEX

WI ADMINISTRATIVE CODE A-E 7.08 REQUIREMENT
REV 10/23/2004 USMONREC.DWG

UNION TWP
ROCK COUNTY WI

IF AVAILABLE
ROCK COUNTY COORDINATES PREFERRED

A	1	2	3	4	5	6	7	8	9	10	11	12	13	14	15	16	17	18	19	20	21	22	23	24	25	A
B		6				5				4					3					2					1	B
C																										C
D																										D
E																										E
F																										F
G																										G
H																										H
J																										J
K																										K
L																										L
M																										M
N																										N
O																										O
P																										P
Q																										Q
R																										R
S																										S
T																										T
U																										U
V																										V
W																										W
X																										X
Y																										Y
Z																										Z

North _____ Elev. _____

East _____

Hor. Datum _____ Vert. Datum _____

LATITUDE _____ ELLIPS. HT. _____

LONGITUDE _____

NAD83(91) _____ NETWORK ADJ. YR 2010 _____

GPS (X) _____ TRAVERSE (X) X

BASED ON THE FOLLOWING CONTROL:

PLACE MONUMENT SYMBOL AT PROPER LOCATION ON ABOVE INDEX

CORNER MONUMENT

WITNESS MONUMENT

(a)

BEARINGS ARE BASED ON: ROCK COUNTY PROJECTION

E 1/4 COR
SEC 25
T 4 N R 9 E
GREEN COUNTY

FIELD BOOK _____ PAGE # _____
OR OBSERVATION SHEET _____

SHEET 1 OF 2

SHOW A PLAN VIEW DRAWING DEPICTING THE CORNER MONUMENT AND SURROUNDING PHYSICAL FEATURES, INCLUDING THE EXCAVATION AREA AND DEPTH.

PLANNING & ZONING COMMITTEE ADOPTED THIS FORM ON 12/2/1982

CORNER CODE P/Q-1

UN 6600 E 1/4 COR SEC 25 T4N R9E BROOKLYNTWP-GREEN COUNTY

(B) Describe any record evidence, monument evidence, occupational evidence, testimonial evidence or any other material evidence you considered, and whether the monument was found or placed.

1833 MULLETT T4N R9E [SEP] VAR 8-10E NORTH ON EAST SIDE OF SEC 25

2640 SET 1/4 SEC POST IN PRAIRIE AND MADE MOUND
5280 SET POST TO SECTIONS 24 & 25 IN PRAIRIE & MADE MOUND.

LAND & C SAME AS LAST MILE NOTE NEEDLE ATTRACTED 30' WEST

1870 RUGER AUG 25 REMON-86 AUGUST 25 1870 NORTH ON WEST LINE OF SW 1/4 SEC 19 ON A VAR 6-10; AT 2602.05 INTERSECTED QUARTER LINE 6.6' WEST OF QUARTER CORNER. FOUND HARD HEAD STONE AT CORNER SET BY SELF IN SURVEY. COR VAR 6-01

NORTH ON WEST LINE OF NW 1/4 SEC 19 ON A VAR 5-50; AT

2601.39 INTERSECTED NORTH BOUNDARY LINE 5.28' EAST OF CORNER. COR VAR 5-57

1978 TALARCZYK #6998 ALUMINUM MON. CORNER SET BY PROPORTIONATE MEASUREMENT & EXISTING PHYSICAL EVIDENCE. REFERENCED SAME.

FD TALARCZYK'S NE & SE REFERENCE RERODS. DID NOT FIND SURFACE PVMT MON.

C) Was the corner restored through acceptance of (1) an obliterated evidence location, or, (2) a found perpetuated location?

DID NOT ACCEPT NOR REJECT TALARCZYK'S MONUMENT. HIS MON IS 0.12 OFF A LINE BETWEEN PERPETUATED CUT LIMESTONES @ W 1/4 & SW CORNERS OF SEC 19 UNION TWP.

D) Describe any material discrepancy between the location of the corner as restored or reestablished and the location of that corner as previously restored or reestablished by distance and direction. Show the discrepancy on the plan view drawing under (a), above. Show the distances between the corner as previously restored or reestablished and (1) the corner as restored or reestablished, and (2) to at least 4 of the witness monuments shown on the drawing in (a), above.

(E) Was the corner reestablished through lost corner proportionate methods? If so, show the method, including the directions and distances to other public land survey corners used as evidence or used for proportioning the corner location.

I, Donald Barnes, hereby certify that the corner location as identified by the corner code index was determined by me under my direction and control and that this U.S. Public Land Survey Monument Record is correct and complete to the best of my knowledge and belief.

SEAL
Donald
Barnes

SHEET 1 OF 2

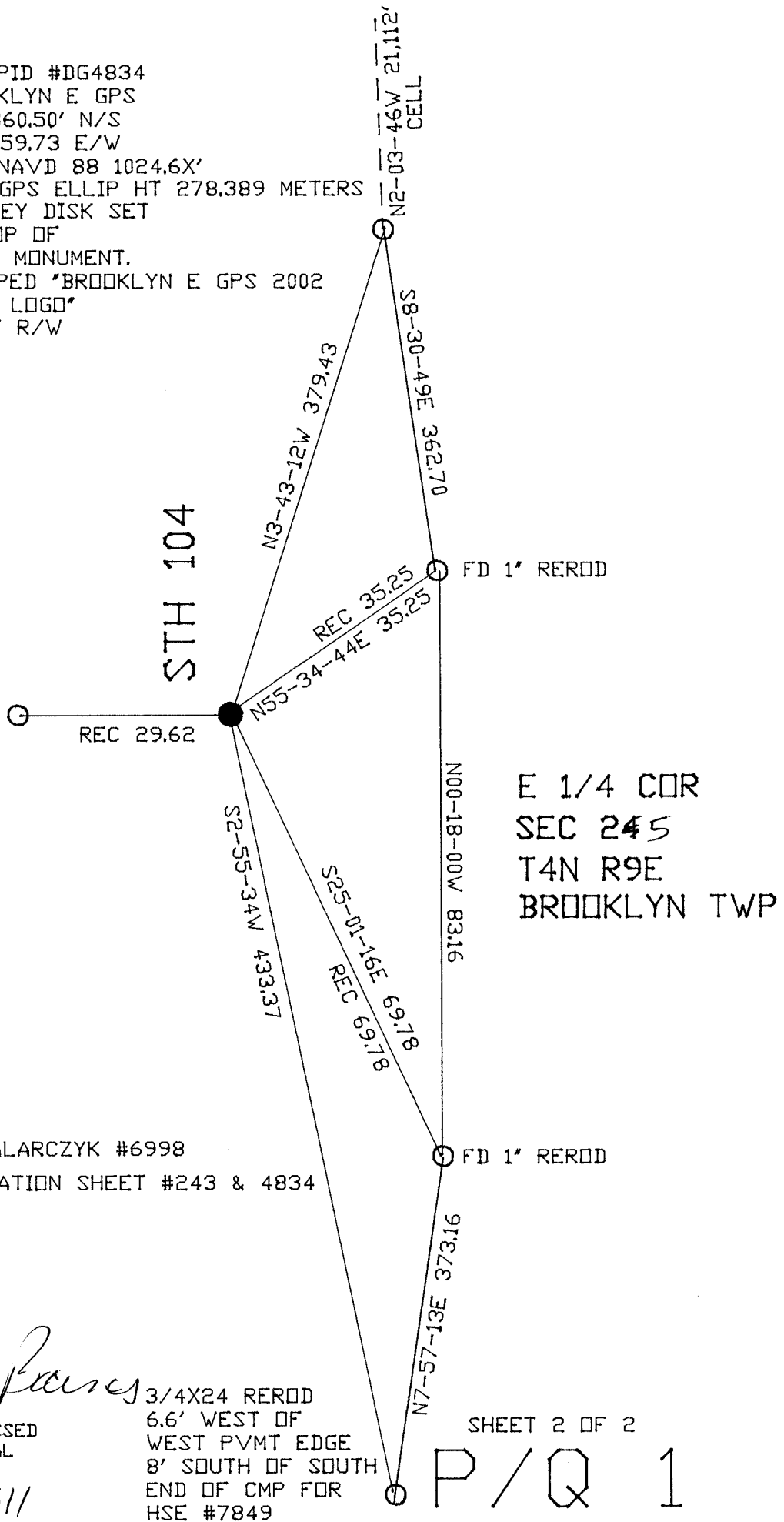
Aug 16, 2011

CORNER CODE

P/Q 1

A.E. 7.08 REQUIREMENT

FED PID #DG4834
 BROOKLYN E GPS
 309,360.50' N/S
 400,259.73 E/W
 GPS NAVD 88 1024.6X'
 REC GPS ELLIP HT 278.389 METERS
 SURVEY DISK SET
 IN TOP OF
 CONC. MONUMENT.
 STAMPED "BROOKLYN E GPS 2002
 WIDT LOGO"
 WEST R/W



1978 TALARCZYK #6998
 OBSERVATION SHEET #243 & 4834

Handwritten signature

EMBOSSSED SEAL

Aug 16, 2011

3/4X24 REROD
 6.6' WEST OF
 WEST PVMT EDGE
 8' SOUTH OF SOUTH
 END OF CMP FOR
 HSE #7849

SHEET 2 OF 2

P/Q 1