

Paper weight-110# (minimum)

Black nonfading ink required

U.S. PUBLIC LAND SURVEY MONUMENT RECORD

For Public Land Survey Corners In:
T. 4 N. R. 10 E. 4th P.M.
CORNER CODE INDEX

WI ADMINISTRATIVE CODE A-E 7.08 REQUIREMENT
REV 10/23/2004 USMONREC.DWG

UNION TWP
ROCK COUNTY WI

IF AVAILABLE
ROCK COUNTY COORDINATES PREFERRED

| | | | | | | | | | | | | | | | | | | | | | | | | | | |
|---|---|---|---|---|---|---|---|---|---|----|----|----|----|----|----|----|----|----|----|----|----|----|----|----|----|---|
| A | 1 | 2 | 3 | 4 | 5 | 6 | 7 | 8 | 9 | 10 | 11 | 12 | 13 | 14 | 15 | 16 | 17 | 18 | 19 | 20 | 21 | 22 | 23 | 24 | 25 | A |
| B | | 6 | | | 5 | | | | 4 | | | | 3 | | | | 2 | | | | 1 | | | | | B |
| C | | | | | | | | | | | | | | | | | | | | | | | | | | C |
| D | | | | | | | | | | | | | | | | | | | | | | | | | | D |
| E | | | | | | | | | | | | | | | | | | | | | | | | | | E |
| F | | | | | | | | | | | | | | | | | | | | | | | | | | F |
| G | | | | | | | | | | | | | | | | | | | | | | | | | | G |
| H | | | | | | | | | | | | | | | | | | | | | | | | | | H |
| J | | | | | | | | | | | | | | | | | | | | | | | | | | J |
| K | | | | | | | | | | | | | | | | | | | | | | | | | | K |
| L | | | | | | | | | | | | | | | | | | | | | | | | | | L |
| M | | | | | | | | | | | | | | | | | | | | | | | | | | M |
| N | | | | | | | | | | | | | | | | | | | | | | | | | | N |
| O | | | | | | | | | | | | | | | | | | | | | | | | | | O |
| P | | | | | | | | | | | | | | | | | | | | | | | | | | P |
| Q | | | | | | | | | | | | | | | | | | | | | | | | | | Q |
| R | | | | | | | | | | | | | | | | | | | | | | | | | | R |
| S | | | | | | | | | | | | | | | | | | | | | | | | | | S |
| T | | | | | | | | | | | | | | | | | | | | | | | | | | T |
| U | | | | | | | | | | | | | | | | | | | | | | | | | | U |
| V | | | | | | | | | | | | | | | | | | | | | | | | | | V |
| W | | | | | | | | | | | | | | | | | | | | | | | | | | W |
| X | | | | | | | | | | | | | | | | | | | | | | | | | | X |
| Y | | | | | | | | | | | | | | | | | | | | | | | | | | Y |
| Z | | | | | | | | | | | | | | | | | | | | | | | | | | Z |

North _____ Elev. _____

East _____

Hor. Datum _____ Vert. Datum _____

LATITUDE _____ ELLIPS. HT. _____

LONGITUDE _____

NAD83(91) _____ NETWORK ADJ. YR 2010 _____

GPS (X) _____ TRAVERSE (X) X

BASED ON THE FOLLOWING CONTROL:

PLACE MONUMENT SYMBOL **◆** AT PROPER LOCATION ON ABOVE INDEX

◆ CORNER MONUMENT

○ WITNESS MONUMENT

(a)

BEARINGS ARE BASED ON: --- ROCK COUNTY PROJECTION

E 1/4 COR
SEC 24
T 4 N R 9 E
GREEN COUNTY

FIELD BOOK _____ PAGE # _____

OR OBSERVATION SHEET _____

SHEET 1 OF 2

SHOW A PLAN VIEW DRAWING DEPICTING THE CORNER MONUMENT AND SURROUNDING PHYSICAL FEATURES, INCLUDING THE EXCAVATION AREA AND DEPTH.

PLANNING & ZONING COMMITTEE ADOPTED THIS FORM ON 12/2/1982

CORNER CODE L/M-1

UN6580 E 1/4 COR SEC 24 T4N R9E

(B) Describe any record evidence, monument evidence, occupational evidence, testimonial evidence or any other material evidence you considered, and whether the monument was found or placed.

- 1833 MULLETT (SEP) NORTH ON EAST SIDE OF SEC 24
2640 SET 1/4 SECTION POST MADE A MOUND
5280 SET POST FOR CORNER TO SECTIONS 13 & 24
AND MADE A MOUND.
LAND @ C SAME
NEEDLE ATTRACTED 75' WEST
- 1870 RUGER AUG REMON-90 NORTH ON WEST LINE OF SW 1/4
SEC 18 ON A VAR 5-45; AT
2636.04 INTERSECTED QUARTER LINE AT QUARTER
CORNER. FOUND LIME STONE AT CORNER SET BY
SELF IN A PREVIOUS SURVEY.
NORTH ON WEST LINE OF NW 1/4 SEC 18
ON A VAR 5-30; AT
2637.03 INTERSECTED NORTH BOUNDARY LINE AT
CORNER.
- 1978 TALARCZYK #6999 ALUMINUM MON. CORNER SET BY
PROPORTIONATE MEASUREMENT & EXISTING PHYSICAL
EVIDENCE. REFERENCED SAME.

FD PK & 2 REFERENCE PINS.

C) Was the corner restored through acceptance of (1) an obliterated evidence location, or, (2) a found perpetuated location?

DID NOT ACCEPT NOR REJECT FD PK OR TALARCZYK ALUM.

D) Describe any material discrepancy between the location of the corner as restored or reestablished and the location of that corner as previously restored or reestablished by distance and direction. Show the discrepancy on the plan view drawing under (a), above. Show the distances between the corner as previously restored or reestablished and (1) the corner as restored or reestablished, and (2) to at least 4 of the witness monuments shown on the drawing in (a), above.

(E) Was the corner reestablished through lost corner proportionate methods? If so, show the method, including the directions and distances to other public land survey corners used as evidence or used for proportioning the corner location.

I, **Donald Barnes**, hereby certify that the corner location as identified by the corner code index was determined by me under my direction and control and that this U.S. Public Land Survey Monument Record is correct and complete to the best of my knowledge and belief.

SEAL
Donald
Barnes

SHEET 1 OF 2

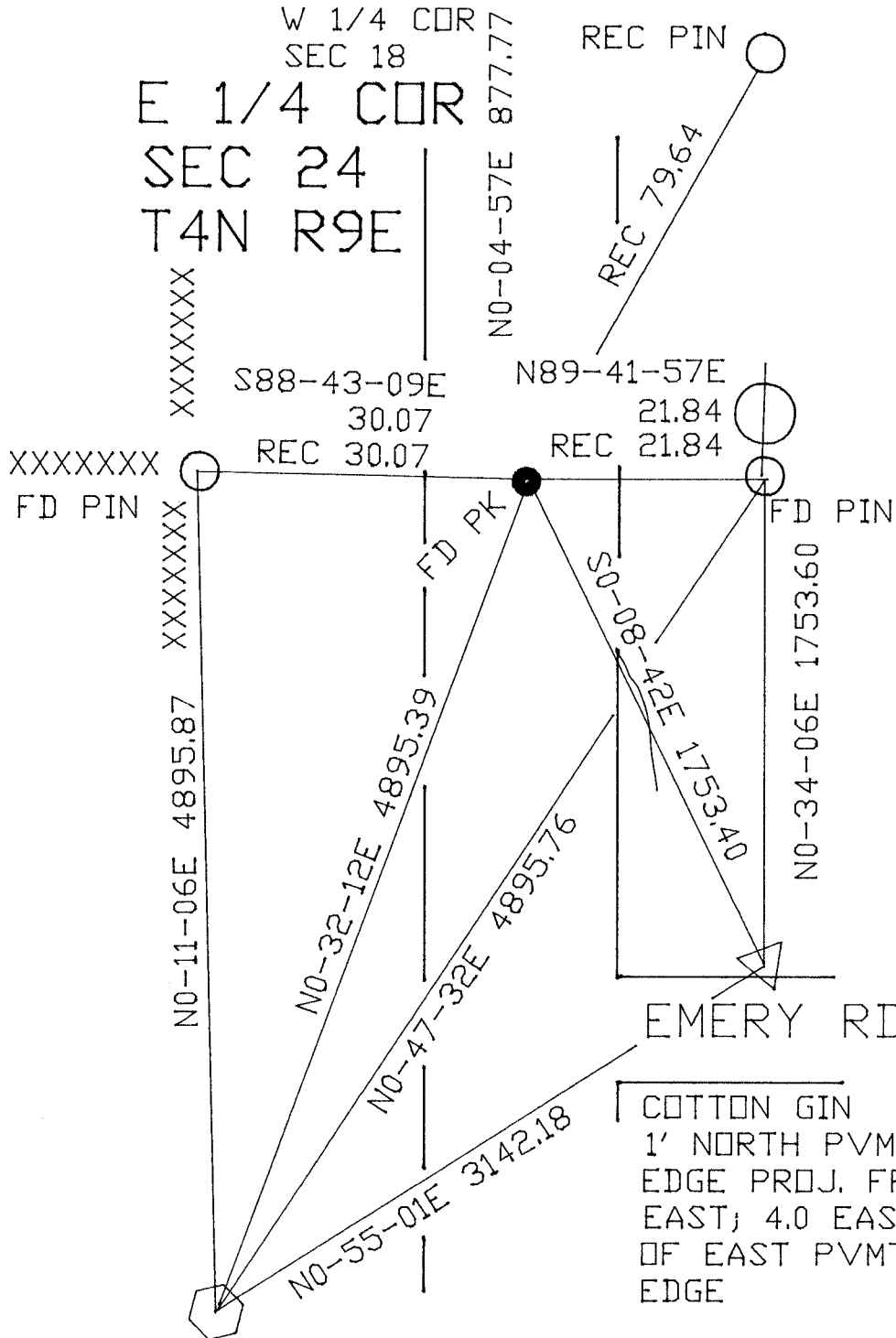
CORNER CODE L/M-1

A.E. 7.08 REQUIREMENT

Aug 17, 2011

1976 TALARCZYK #6999
OBSERVATION SHEET #138

W 1/4 COR
SEC 18
E 1/4 COR
SEC 24
T4N R9E



FED PID #DG4834
BROOKLYN E GPS
309,360.50' N/S
400,259.73 E/W
GPS NAVD 88 1024.6X
REC GPS ELLIP HT 278.389 M
SURVEY DISK SET
IN TOP OF CONC.
MON. STAMPED
"BROOKLYN E GPS 2002
WIDT LOGO"
WEST R/W

COTTON GIN
1' NORTH PVMT
EDGE PROJ. FROM
EAST; 4.0 EAST
OF EAST PVMT
EDGE

EMBOSSED
SEAL

Daniel Barnes
Aug 17 2011

SHEET 2 OF 2

L/M-1