

Paper weight-110# (minimum)

Black nonfading ink required

U.S. PUBLIC LAND SURVEY MONUMENT RECORD

For Public Land Survey Corners In:
T. 4 N. R. 10 E. 4th P.M.
CORNER CODE INDEX

WI ADMINISTRATIVE CODE A-E 7.08 REQUIREMENT
REV 10/23/2004 USMONREC.DWG

UNION TWP
ROCK COUNTY WI

IF AVAILABLE
ROCK COUNTY COORDINATES PREFERRED

A	1	2	3	4	5	6	7	8	9	10	11	12	13	14	15	16	17	18	19	20	21	22	23	24	25	A
B		6					5					4				3				2				1		B
C																										C
D																										D
E																										E
F																										F
G																										G
H																										H
J																										J
K																										K
L																										L
M																										M
N																										N
O																										O
P																										P
Q																										Q
R																										R
S																										S
T																										T
U																										U
V																										V
W																										W
X																										X
Y																										Y
Z																										Z

North _____ Elev. _____

East _____

Hor. Datum _____ Vert. Datum _____

LATITUDE _____ ELLIPS. HT. _____

LONGITUDE _____

NAD83(91) _____ NETWORK ADJ. YR 2010 _____

GPS (X) _____ TRAVERSE (X) X

BASED ON THE FOLLOWING CONTROL:

PLACE MONUMENT SYMBOL AT PROPER LOCATION ON ABOVE INDEX

CORNER MONUMENT

WITNESS MONUMENT

(a)

BEARINGS ARE BASED ON: ROCK COUNTY PROJECTION

FIELD BOOK _____ PAGE # _____

OR OBSERVATION SHEET _____

SHEET 1 OF 3

SHOW A PLAN VIEW DRAWING DEPICTING THE CORNER MONUMENT AND SURROUNDING PHYSICAL FEATURES, INCLUDING THE EXCAVATION AREA AND DEPTH.

PLANNING & ZONING COMMITTEE ADOPTED THIS FORM ON 12/2/1982

CORNER CODE N-7

UN564 S1/4CORSEC17

(B) Describe any record evidence, monument evidence, occupational evidence, testimonial evidence or any other material evidence you considered, and whether the monument was found or placed.

- 1833 (NOV) HARRISON T4N R10E 4TH MER. EAST ON RAMDOM
BET 17 & 20
2640.00 TEMPY 1/4 SEC COR.
4851.00 LEAVE PRAIRIE & ENTER TIMBER
5306.40 INT. E BDY 3.3' S OF P LAND LEVEL 1ST RATE
PRAIRIE GROWTH HAZEL, GRASS & WEEDS
WEST COR. WEST BET SECS 17 & 20
2653.20 QUARTER SEC COR. SET POST & RAISED
MOUND
5306.40 SEC COR
- 1856 CHURCH VOL 1 PG 59 USED TO SUBDIVIDE SEC 17. STATES
NOTHING ABOUT MON. VAR8 2649.24 TO CENTER OF SEC 17
& 5298.48 TO N 1/4 COR SEC 17
- 1870 RUGER AUG REMON-92 AUGUST 27, 1870 WEST ON
SOUTH LINE OF SE 1/4 SEC 17 ON A VAR 7-15;
COULD FIND NO TRACE OF SOUTH QUARTER CORNER.
CONTINUED WEST ON SOUTH LINE OF SW 1/4 OF
SAID SECTION, AT
5327.19 INTERSECTED WEST BOUNDARY LINE AT
CORNER. ESTABLISHED SOUTH QUARTER
CORNER AT A POINT IN A TRUE LINE BETWEEN
AND EQUIDISTANT FROM THE SE & SW CORNERS
OF SAID SECTION, IT BEING DISTANT FROM EACH
2663.60
- 1890 BLEEDORN VOL 2 PG 430 MON - USED TO SUBDIVIDE SEC
17. 2638.68 TO CENTER OF SEC 17
- 1891 BLEEDORN VOL 2 PG 459 MON- USED SUBDIVIDE SEC 20.
2648.42 TO NE COR SEC 20, VAR 5-28 TO CENTER OF SEC
20
- 1938 SUNNY VOL 3 PG 403 STATES NOTHING. LINE ARROW TO
PVMT CENTER & N/S FENCE LINE. CHAINED 2668.6 TO SE
COR SEC 17. @ SE COR SEC 17 DUG LARGE & DEEP HOLES
AT BOTH PLACES. FD NOTHING. DUG AT CENTER OF PVMT
INTERSECTION & E/W PVMT INT WITH N/S WESTERN R/W LINE.
- 1974 BATTERMAN VOL 4 PG 246 FD CUT LS & REFERENCED SAME.
- 1979 BARNES VOL 5 PG 528 SHOWS REC DISTANCES. S88-59-28W
2669.01 TO SW COR SEC 17, N0-41-12W 5311.26 TO N 1/4
COR SEC 17.
- 1982 BARNES N-9 2670.16 TO SE COR SEC 17
- 1982 BARNES VOL 6 PG 288 N88-56-01E 2670.16 TO NE COR SEC
20 & S88-59-28W 2669.01 TO NW COR SEC 20
- 1999 KARNS CSM VOL 22 PG 438 ROCK COUNTY MON. 2670.06 TO
FD R/R @ NE COR SEC 20
- 2000 KARNS CSM VOL 23 PG 115 ALUM. MON S89-20-44E
2670.02 TO RR SPIKE @ SE COR SEC 17.
- 2000 KARNS CSM VOL 23 PG 117 ROCK COUNTY SEC COR. N1-
02-07E 5310.87 TO N 1/4 COR SEC 17 & N89-18-02W TO
ROCK COUNTY SEC COR @ SW COR SEC 17
- 2004 COMBS CSM VOL 27 PG 215 ALUM. MON N89-37-53E
670.01 TO R/R SPIKE @ NE COR SEC 20, S89-40-29W
2668.88 TO ALUM @ NW COR SEC 20, & S0-06-12W
5294.31 TO FD R/R @ S 1/4 COR SEC 20

Donald Barnes
Dec 30, 2011

SHEET 1 OF 3

CORNER CODE N-7

UN564 S1/4CORSEC17

FD ALUM MON. 0.2' DEEP.

C) Was the corner restored through acceptance of (1) an obliterated evidence location, or, (2) a found perpetuated location?

ACCEPTED ALUM. MON.

D) Describe any material discrepancy between the location of the corner as restored or reestablished and the location of that corner as previously restored or reestablished by distance and direction. Show the discrepancy on the plan view drawing under (a), above. Show the distances between the corner as previously restored or reestablished and (1) the corner as restored or reestablished, and (2) to at least 4 of the witness monuments shown on the drawing in (a), above.

NONE

(E) Was the corner reestablished through lost corner proportionate methods? If so, show the method, including the directions and distances to other public land survey corners used as evidence or used for proportioning the corner location.

YES, BY RUGER IN 1870

I, **Donald Barnes**, hereby certify that the corner location as identified by the corner code index was determined by me under my direction and control and that this U.S. Public Land Survey Monument Record is correct and complete to the best of my knowledge and belief.

SHEET 2 OF 3

CORNER CODE N-7

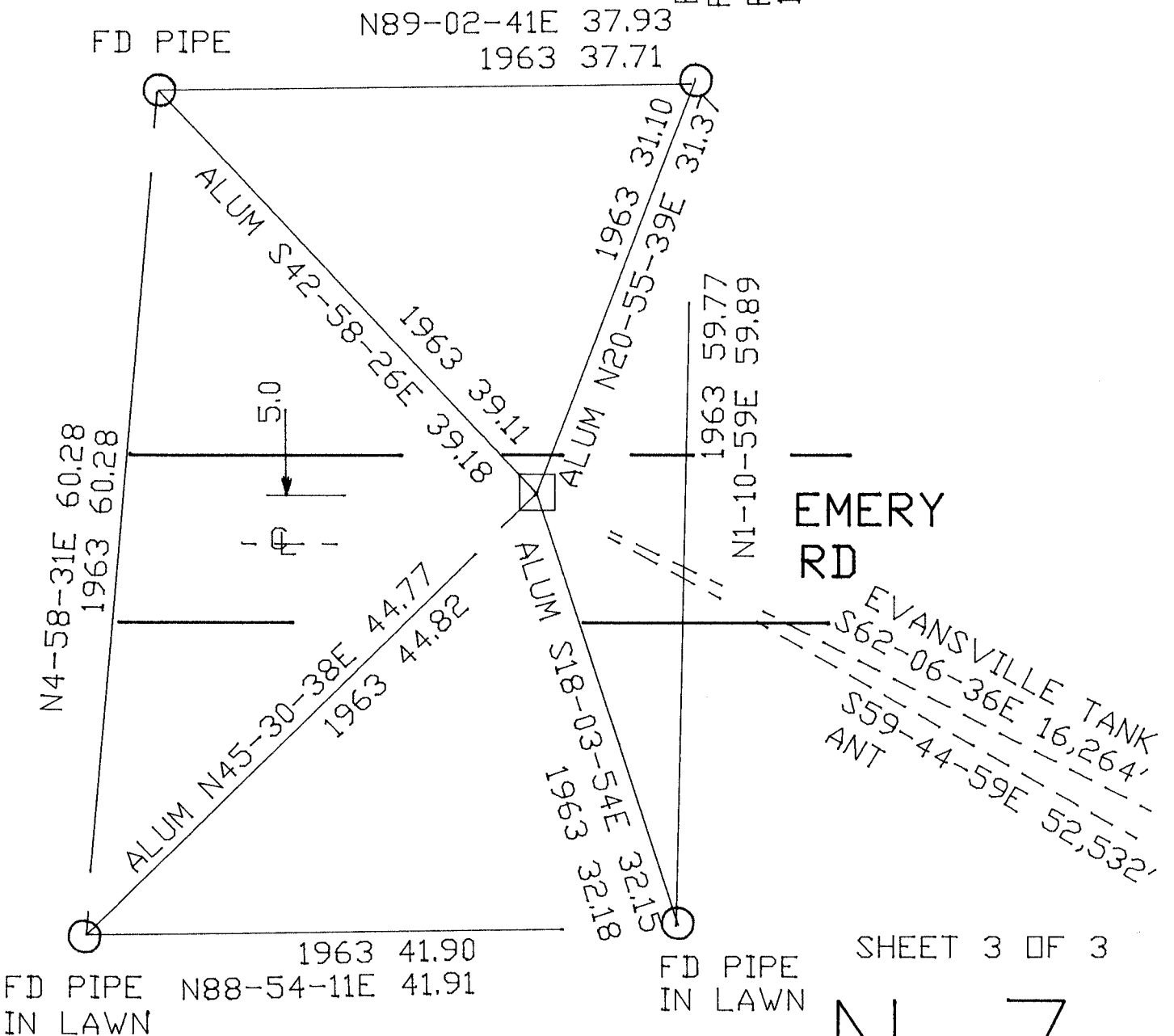
A.E. 7.08 REQUIREMENT

Doc 30, 2011

1963 BATTERMAN VOL 4 PG 246

OBSERVATION SHEETS
327, 341, 343, 564

S 1/4 COR
SEC 17
UNION TWP
T4N R10E



SHEET 3 OF 3

N-7

Donald Barnes
Dec 30, 2011