

U.S. PUBLIC LAND SURVEY MONUMENT RECORD

For Public Land Survey Corners in:

WI ADMINISTRATIVE CODE A-E 7.08 REQUIREMENT

T. 4 N., R. 10 E

CORNER CODE INDEX

A	1	2	3	4	5	6	7	8	9	10	11	12	13	14	15	16	17	18	19	20	21	22	23	24	25
B																									
C	6																								
D																									
E																									
F																									
G	1																								
H																									
I																									
J																									
K																									
L	18																								
M																									
N																									
O																									
P	19																								
Q																									
R																									
S	30																								
T																									
U																									
V																									
W																									
X	31																								
Y																									
Z																									

UNION TWP

ROCK COUNTY WI

IF AVAILABLE
ROCK COUNTY COORDINATES PREFERRED

North _____ Elev. _____

East _____

Hor. Datum _____ Vert. Datum _____

LATITUDE _____ ELLIPS. HT. _____


LONGITUDE _____

GPS (X) _____ TRAVERSE (X) _____

BASED ON THE FOLLOWING CONTROL:

PLACE MONUMENT SYMBOL  AT PROPER LOCATION ON ABOVE INDEX

 CORNER MONUMENT

 WITNESS MONUMENT

(a)

BEARINGS ARE BASED ON:

FIELD BOOK _____ PAGE # _____

SHEET 1 OF 2

SHOW A PLAN VIEW DRAWING DEPICTING THE CORNER MONUMENT AND SURROUNDING PHYSICAL FEATURES, INCLUDING THE EXCAVATION AREA AND DEPTH.

PLANNING & ZONING COMMITTEE ADOPTED THE ABOVE FORM ON 12/2/1982

CORNER CODE N17

UN569

(B) Describe any record evidence, monument evidence, occupational evidence, testimonial evidence or any other material evidence you considered, and whether the monument was found or placed.

1870 RUBER REMONUMENTATION PG 74 WEST ON NORTH LINE OF NE 1/4 SEC 23 ON A VAR 7-06 OFFSET NORTH 15.18' OFFSET SOUTH 42.24' AT 2635.55 INTERSECTED 1/4 LINE 33.66' SOUTH OF 1/4 COR. FD OLD STAKE AT COR. CORRECTED VAR 6-58 WEST ON NORTH LINE OF NW 1/4 SEC 23 ON A VAR 8-15 OFFSET NORTH 15.18' AT 2626.14 INTERSECTED WEST BOUNDARY LINE 23.1 SOUTH OF COR. FD REMAINS OF STUMPS OF 3 BEARING TREES. ESTABLISHED COR. FROM BEARING TREES. CORRECTED VAR 7-25.
PG 97 EAST ON NORTH LINE OF NW 1/4 SEC 22 A VAR 6-35 OFFSET NORTH 12.54' AT 2635.38 INTERSECTED 1/4 LINE 6.6' SOUTH OF 1/4 COR. FD STUMPS OF BEARING TREES & ESTABLISHED 1/4 COR FROM THEM CORRECTED VAR 7-00
SOUTH ON WEST LINE OF NW 1/4 SEC 23 ON A VAR 6-47 AT 2643.3' INTERSECTED 1/4 LINE 6.6' EAST OF 1/4 COR ESTABLISHED 1/4 COR FROM STUMP OF BEARING TREE. CORRECTED VAR 6-38
SOUTH ON WEST LINE OF SW 1/4 SEC 23 ON A VAR 6-55 AT 2649.90 INTERSECTED SOUTH BOUNDARY LINE AT COR.
PG 98 WEST ON NORTH LINE OF NE 1/4 SEC 22 ON A VAR 6-30 OFFSET NORTH 1.32' OFFSET NORTH 20.46' OFFSET NORTH 6.6' AT 2634.72' INTERSECTED 1/4 LINE 13.2' NORTH OF 1/4 COR. ESTABLISHED 1/4 COR FROM STUMPS OF BEARING TREES. CORRECTED VAR 6-10
PG 100 SOUTH ON EAST LINE OF NE 1/4 SEC 15 ON A VAR 6-50 OFF SET EAST 20.46' AT 2665.08' INTERSECTED 1/4 LINE 15.18' EAST OF 1/4 COR FD REMAINS OF BOTH BEARING STUMPS & ESTABLISHED 1/4 COR FROM THEM. CORRECTED VAR 6-57
SOUTH ON EAST LINE OF SE 1/4 SEC 15 ON A VAR 7-00 OFFSET WEST 5.94' OFFSET EAST 15.18' OFFSET EAST 31.02' AT 2671.68' INTERSECTED SOUTH BOUNDARY LINE 27.72 EAST OF COR CORRECTED VAR 7-16

1875 RUBER VOL 2 PG 201 CALLS FOR STONE MON. VAR 6-38 2630.1 TO N 1/4 COR SEC 23

1974 LEE VOL 5 PG 29 FD CUT STONE 2' DEEP 12-12-74 RB & J.L. BOOK 176 PG 37-38. ESTABLISHED TIES. CALLS FOR COR 2' EAST OF WEST PVMT EDGE.

FD BENT PIPE AND NE & SE REFERENCE PIPES.

C) Was the corner restored through acceptance of (1) an obliterated evidence location, or, (2) a found perpetuated location?

PIPE ACCEPTED FOUND

D) Describe any material discrepancy between the location of the corner as restored or reestablished and the location of that corner as previously restored or reestablished by distance and direction. Show the discrepancy on the plan view drawing under (a), above. Show the distances between the corner as previously restored or reestablished and (1) the corner as restored or reestablished, and (2) to at least 4 of the witness monuments shown on the drawing in (a), above.

(E) Was the corner reestablished through lost corner proportionate methods? If so, show the method, including the directions and distances to other public land survey corners used as evidence or used for proportioning the corner location.

I, Donald Barnes, hereby certify that the corner location as identified by the corner code index was determined by me under my direction and control and that this U.S. Public Land Survey Monument Record is correct and complete to the best of my knowledge and belief.

Seal

Donald Barnes

Emboss

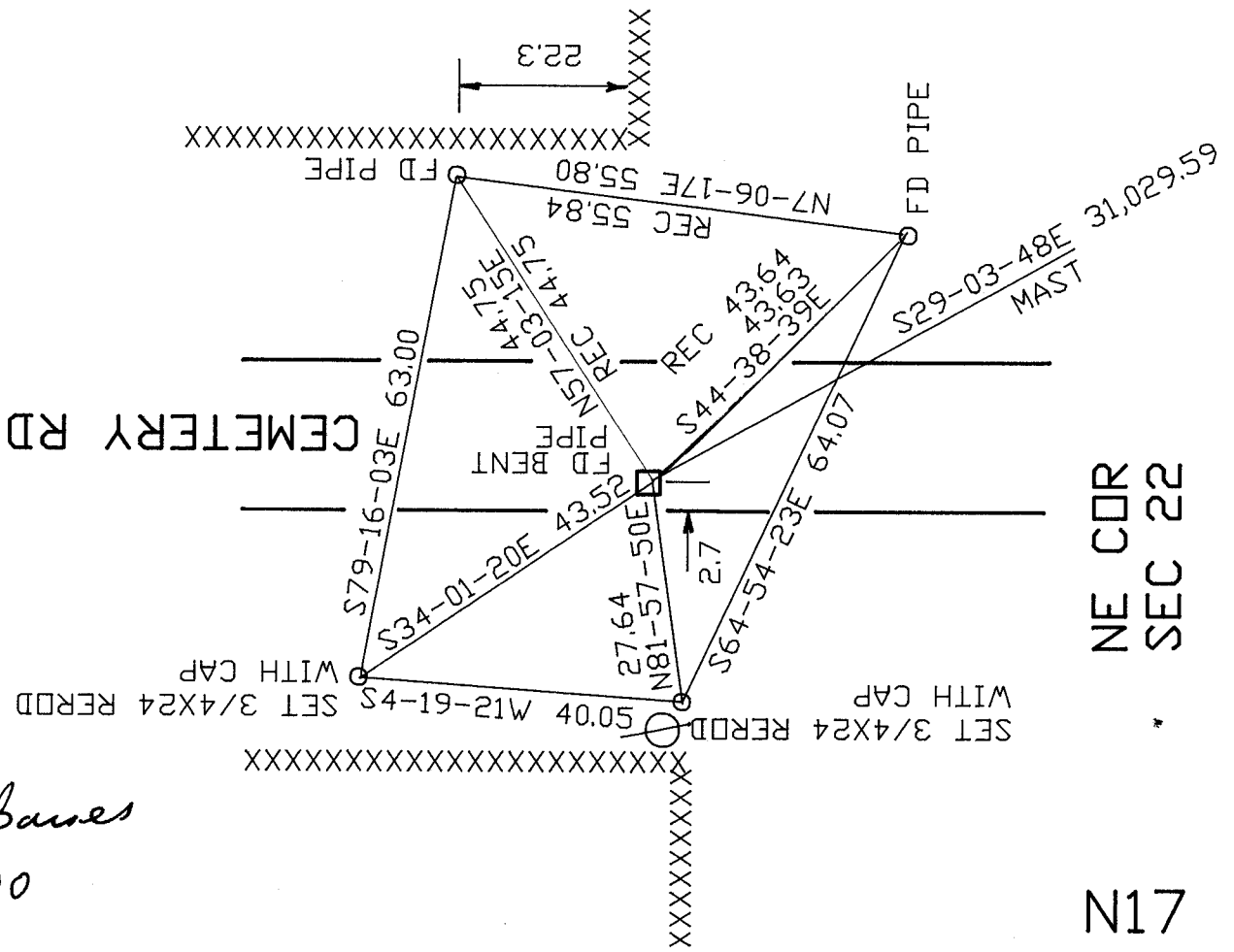
05/02/00

Number of included sheets 1

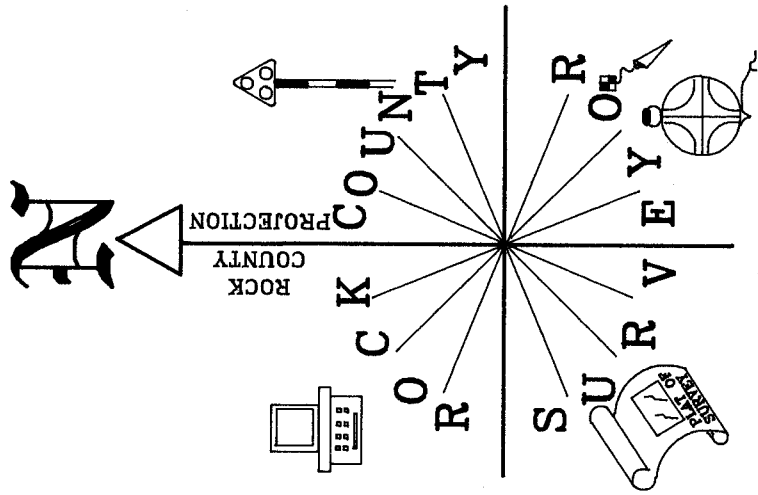
CORNER CODE N-17

A-E 7.08 REQUIREMENT

Donald Barnes
05/04/00



N17
NE COR
SEC 22



OBSERVATION SHEET