

U.S. PUBLIC LAND SURVEY MONUMENT RECORD

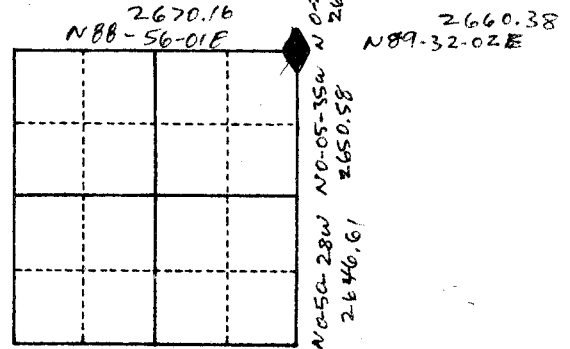
For Public Land Survey Corners in
 UNION TWP. T. 4 N., R. 10 E.

For Miscellaneous Corners within
 Sec. 20, T. 4 N., R. 10 E.

CORNER CODE INDEX

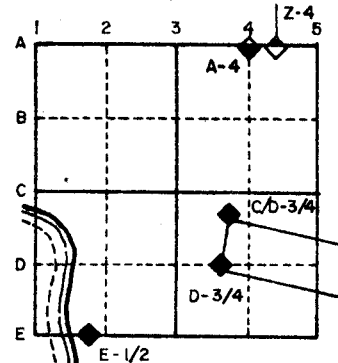
	1	2	3	4	5	6	7	8	9	10	11	12	13	14	15	16	17	18	19	20	21	22	23	24	25
A																									
B																									
C	6																								
D		5																							
E			4																						
F				3																					
G					2																				
H																									
I																									
J																									
K																									
L																									
M	18																								
N																									
O																									
P																									
Q																									
R																									
S																									
T																									
U																									
V																									
W																									
X																									
Y																									
Z																									

PLACE MONUMENT SYMBOL (◆) AT PROPER LOCATION ON ABOVE INDEX



1. Above code numbers are positioned Meander, Claim, or Fractional corners of the section.
2. Township corner code numbers shall be applied to the corners of above typical section.

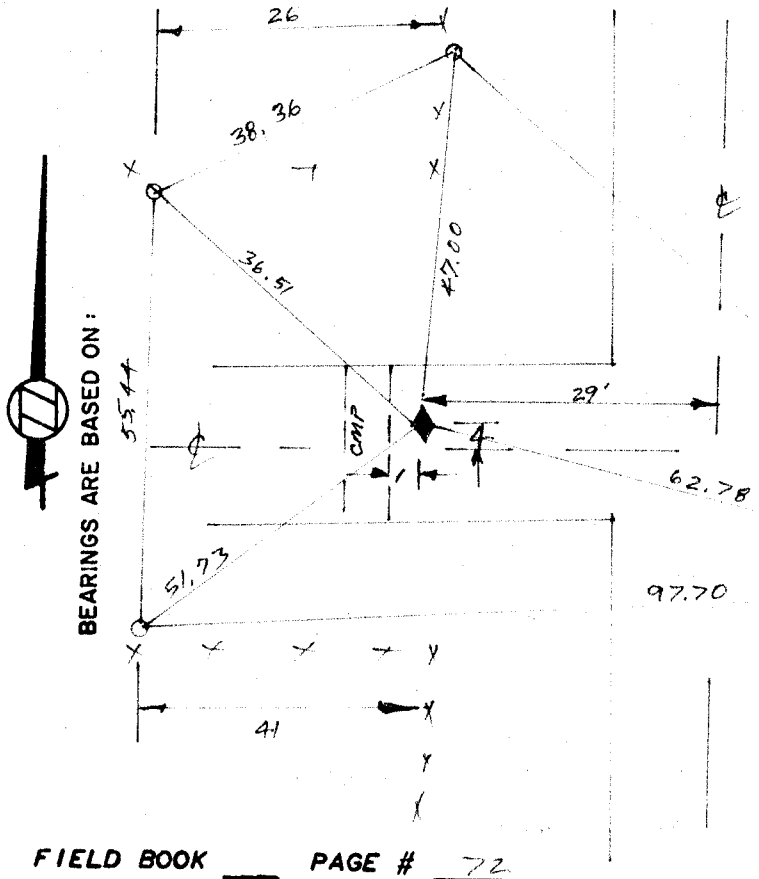
EXAMPLE



IF AVAILABLE
 STATE PLANE COORDINATES

North (Y) _____ Eleve. (Z) _____
 East (X) _____ Zone _____
 Hor. Datum _____ Vert. Datum _____

(a.) ◆ CORNER MONUMENT *HP spike* ○ WITNESS MONUMENT



X BJ SUNNY DUG AT E OF Roads. I did not DIG BECAUSE OF THE CMP.

○ 3/8 X 33" IRON BOLT

FIELD BOOK _____ PAGE # 72

SHOW A PLAN VIEW DRAWING DEPICTING THE CORNER MONUMENT AND SURROUNDING PHYSICAL FEATURES, INCLUDING THE EXCAVATION AREA AND DEPTH. THE CORNER MONUMENT SHALL HAVE THE FOLLOWING CHARACTERISTICS: 1) HAVE AT LEAST TWO PREDETERMINED BREAK-OFF POINTS. 2) IF BROKEN, LEAVE A PERMANENTLY MAGNETIZED REMNANT AT THE ORIGINAL POINT. 3) MUST BE EXTENDABLE. 4) THE CAP IS INSCRIBED: ROCK COUNTY SURVEY MONUMENT - PENALTY FOR DISTURBING MARKER. 5) OR AN EXISTING CUT LIMESTONE. AN IRON PIPE 1 1/2" X 4'0" (MINIMUM) MAY BE USED IN AREAS WHERE GROUND WATER IS WITHIN ONE FOOT OF THE SURFACE. IF THE CORNER IS OCCUPIED BY AN IMPROVEMENT (MANHOLE, BURIED CABLE, ETC.) ANY DURABLE, DISTINCT MONUMENT MAY BE USED. CORNERS SHALL BE REFERENCED WITH AT LEAST 4 DURABLE WITNESS MONUMENTS. WITNESS MONUMENTS SHALL BE MADE OF CONCRETE, NATURAL STONE, IRON OR OTHER EQUALLY DURABLE MATERIAL, EXCEPT WOOD. DESCRIBE THE CORNER AND THE WITNESS MONUMENTS.

CORNER CODE: _____

(b.) Describe any record evidence, monument evidence, occupational evidence, testimonial evidence or any other material evidence you considered, and whether the monument was found or placed.

THE MONUMENT WAS DESTROYED BY THE CULVERT. I USED RUGER'S 1870 REMONUMENTATION DISTANCES TO SET THE CORNER.

	RUGER	MEASURED
S¼ COR SEC 17 TO SE COR SEC 17	2663.60	2670.16
SE COR SEC 17 TO S¼ COR SEC 16	2653.86	2660.38
	RUGER	MEASURED
E¼ COR SEC 17 TO SE COR SEC 17	2636.70	2641.31
	TOTAL	5317.46
SE COR SEC 17 TO E¼ COR SEC 20	2645.94	2650.50
		5330.54
E¼ COR SEC 20 TO SE COR SEC 20	2641.98	2646.61
		5317.46 =
TOTAL	7924.62	7938.50
		X= 2670.16 (PRORATED)

$$\frac{7938.50}{7924.62} = \frac{X}{2641.98} \quad X = 2646.61 \text{ (PRORATED)}$$

SET R/R SAKE

(c.) Was the corner restored through acceptance of (1) an obliterated evidence location, or, (2) a found perpetuated location?

THE CORNER WAS RESTORED THROUGH ACCEPTING OBLITERATED EVIDENCE LOCATION DISTANCES.

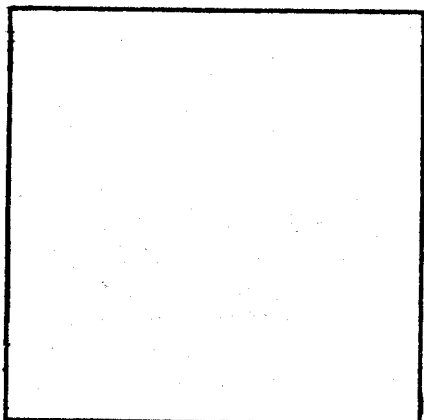
(d.) Describe any material discrepancy between the location of the corner as restored or reestablished and the location of that corner as previously restored or reestablished by distance and direction. Show the discrepancy on the plan view drawing under (a), above. Show the distances between the corner as previously restored or reestablished and (1) the corner as restored or reestablished, and (2) to at least 4 of the witness monuments shown on the drawing in (a), above.

IN THE FIELD BOOK, RUGER STATES HE SET THE S¼ CORNER OF SEC 17 ON LINE WITH THE SE & SW CORNERS OF SEC 17 AT PROPORTIONATE DISTANCE. IF THE SW COR & S¼ COR IS DOUBLED OVER IT IS 2.64 SOUTH & 1.13 EAST OF THE SE CORNER AS SET BY ME,

(e.) Was the corner reestablished through lost corner proportionate methods? If so, show the method, including the directions and distances to other public land survey corners used as evidence or used for proportioning in determining the corner location.

NO

I, Ronald Barnes, hereby certify that the corner points as identified by the corner code index were, in a field survey on DEC 14, 1982, established, re-established, monumented, re-monumented, recovered or restored as expressed below and in conformance with the regulations and rules as required in the current manual of survey instructions of the United States Department of Interior, Bureau of Land Management.



COUNTY SURVEYOR FILING DATA

Date of Computer Entry _____

Date Received _____

Date Microfilmed _____

Treasurer's Receipt No. _____

Number of Included Sheets _____

AFFIX YOUR LAND SURVEYOR SEAL.

N9