

U.S. PUBLIC LAND SURVEY MONUMENT RECORD

For Public Land Survey Corners in:

WI ADMINISTRATIVE CODE A-E 7.08 REQUIREMENT

T. ~~10~~ N., R. 10 E

A CORNER CODE INDEX

| | | | | | | | | | | | | | | | | | | | | | | | | |
|---|----|---|---|---|---|---|---|---|----|----|----|----|----|----|----|----|----|----|----|----|----|----|----|----|
| A | 2 | 3 | 4 | 5 | 6 | 7 | 8 | 9 | 10 | 11 | 12 | 13 | 14 | 15 | 16 | 17 | 18 | 19 | 20 | 21 | 22 | 23 | 24 | 25 |
| B | | | | | | | | | | | | | | | | | | | | | | | | |
| C | 6 | | | | | | | | | | | | | | | | | | | | | | | |
| D | | | | | | | | | | | | | | | | | | | | | | | | |
| E | | | | | | | | | | | | | | | | | | | | | | | | |
| F | 1 | | | | | | | | | | | | | | | | | | | | | | | |
| G | | | | | | | | | | | | | | | | | | | | | | | | |
| H | | | | | | | | | | | | | | | | | | | | | | | | |
| J | | | | | | | | | | | | | | | | | | | | | | | | |
| K | 18 | | | | | | | | | | | | | | | | | | | | | | | |
| L | | | | | | | | | | | | | | | | | | | | | | | | |
| M | | | | | | | | | | | | | | | | | | | | | | | | |
| N | | | | | | | | | | | | | | | | | | | | | | | | |
| O | | | | | | | | | | | | | | | | | | | | | | | | |
| P | 19 | | | | | | | | | | | | | | | | | | | | | | | |
| Q | | | | | | | | | | | | | | | | | | | | | | | | |
| R | | | | | | | | | | | | | | | | | | | | | | | | |
| S | | | | | | | | | | | | | | | | | | | | | | | | |
| T | 30 | | | | | | | | | | | | | | | | | | | | | | | |
| U | | | | | | | | | | | | | | | | | | | | | | | | |
| V | | | | | | | | | | | | | | | | | | | | | | | | |
| W | | | | | | | | | | | | | | | | | | | | | | | | |
| X | 31 | | | | | | | | | | | | | | | | | | | | | | | |
| Y | | | | | | | | | | | | | | | | | | | | | | | | |
| Z | | | | | | | | | | | | | | | | | | | | | | | | |

UNION TWP

ROCK COUNTY WI

IF AVAILABLE
ROCK COUNTY COORDINATES PREFERRED

North _____ Elev. _____

East _____

Hor. Datum _____ Vert. Datum _____

LATITUDE _____ ELLIPS. HT. _____

LONGITUDE _____

GPS (X) _____ TRAVERSE (X) _____

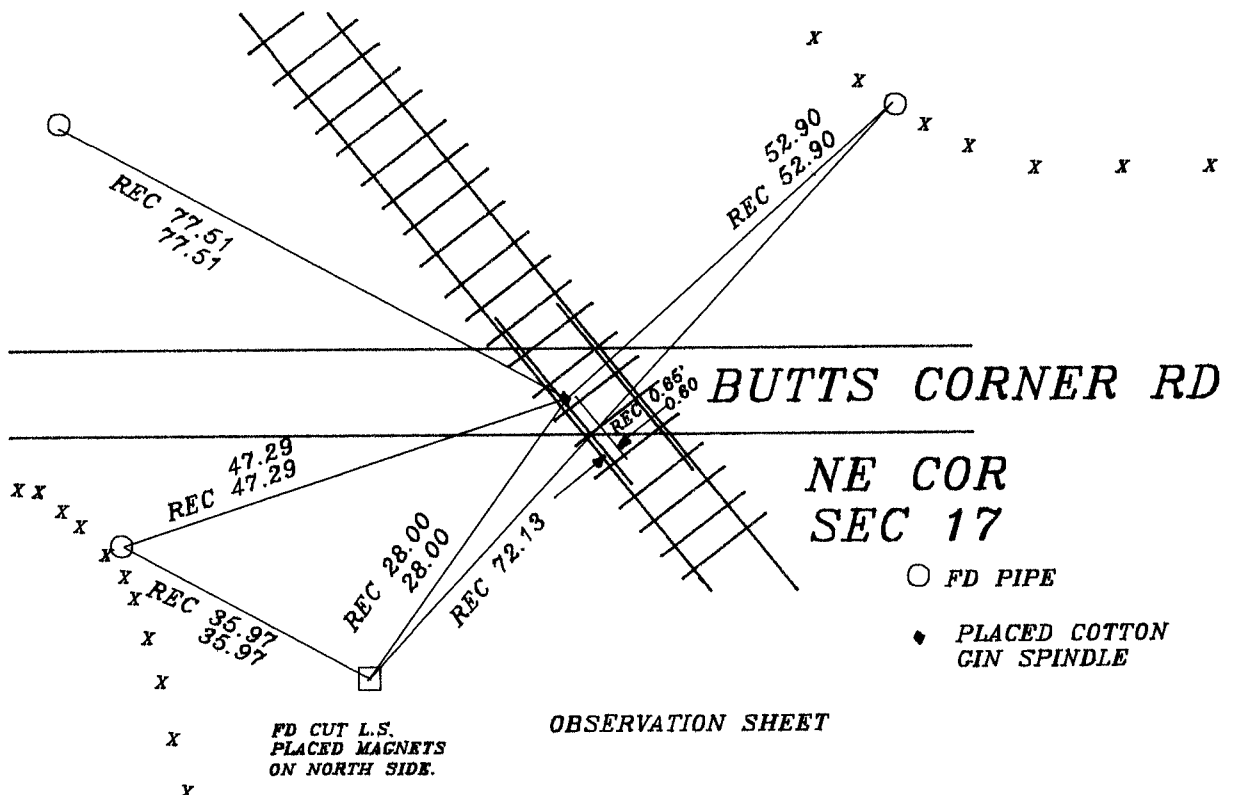
BASED ON THE FOLLOWING CONTROL:

PLACE MONUMENT SYMBOL  AT PROPER LOCATION ON ABOVE INDEX

 CORNER MONUMENT  WITNESS MONUMENT

(a)

BEARINGS ARE BASED ON:



FIELD BOOK _____ PAGE # _____

SHEET _____ OF _____

SHOW A PLAN VIEW DRAWING DEPICTING THE CORNER MONUMENT AND SURROUNDING PHYSICAL FEATURES, INCLUDING THE EXCAVATION AREA AND DEPTH.

PLANNING & ZONING COMMITTEE ADOPTED THE ABOVE FORM ON 12/2/1982

CORNER CODE 5-9

UN545 NE COR SEC 17

(B) Describe any record evidence, monument evidence, occupational evidence, testimonial evidence or any other material evidence you considered, and whether the monument was found or placed.

1833 HARRISON 2640 TO E 1/4 COR SEC 17, 2640 TO E 1/4 COR SEC 8, 2649.9, & 2663.43' TO N 1/4 COR SEC 17.

1856 CHURCH VOL 1 PG 60 2663.1 TO N 1/4 COR SEC 16.

1870 RUGER REMONUMENTATION 2689.5 TO N 1/4 COR SEC 17, 2706.66 TO N 1/4 COR SEC 16, 2644.62 TO E 1/4 COR SEC 8, & 2663.76 TO E 1/4 COR SEC 17. FOUND CORNER BUT DID NOT DESCRIBE MONUMENT. PLACED N 1/4 COR SEC 17 ON LINE WITH NW & NE CORNERS OF SECTION 17 AT EQUAL DISTANCE. SET CUT LIMESTONE MONUMENT.

1890 BLEEDORN VOL 2 PG 430 FOUND MON.

1957 BATTERMAN JR. VOL 3 PG 516 CUT STONE MON. REMOVED DURING REGRADING - RESET AUG 16, 1957. REFERENCED CUT LIMESTONE. DRAWING SHOWS STONE SOUTH OF PAVEMENT.

1979 BARNES VOL 5 PG 532. THE SECTION CORNER AS REFERENCED IN VOL 3 PG 516 IS INCORRECT. THE TERRAIN AND CUTS FOR THE ROAD & RAILROAD INDICATES THE STONE WAS DISTURBED AS STATED. THE STONE IS INCORRECT FOR THE FOLLOWING REASONS:

1) THE REMONUMENTATION FIELD NOTES OF 1870 STATES THE N 1/4 COR OF SEC 17 IS ON LINE WITH THE NE & NW CORNERS OF SEC 17.

2) THE PRORATED DISTANCES TO THE SOUTH, NORTH, EAST, & WEST ARE IN HARMONY WITH THE ABOVE REASON. REFERENCED SAME.

1979 BARNES VOL 5 PG 528 CALLS FOR S88-56-07W 2694.14 TO N 1/4 COR SEC 17, N89-47-06E 2711.33 TO N 1/4 COR SEC 16, S0-24-25E 2670.20 TO E 1/4 COR SEC 17, & N0-11-47E 2651.00 TO E 1/4 COR SEC 8.

1982 BARNES VOL 6 PG 275 FD PK AS REFERENCED IN VOL 5 PG 532.

1994 KARNS CSM V17 PG 321. 2709.64 TO N 1/4 COR SEC 16.

FOUND SMALL HOLE IN ASPHALT. DUG 0.2' DEEP & FOUND NOTHING. PK WAS PROBABLY DESTROYED WHEN SHORT INNER RAILS WERE INSTALLED. PLACED COTTON GIN PIN FROM REFERENCE MONUMENTS.

C) Was the corner restored through acceptance of (1) an obliterated evidence location, or, (2) a found perpetuated location?

CORNER WAS RESTORED THROUGH ACCEPTANCE OF OBLITERATED EVIDENCE LOCATION.

D) Describe any material discrepancy between the location of the corner as restored or reestablished and the location of that corner as previously restored or reestablished by distance and direction. Show the discrepancy on the plan view drawing under (a), above. Show the distances between the corner as previously restored or reestablished and (1) the corner as restored or reestablished, and (2) to at least 4 of the witness monuments shown on the drawing in (a), above.

(E) Was the corner reestablished through lost corner proportionate methods? If so, show the method, including the directions and distances to other public land survey corners used as evidence or used for proportioning the corner location.

I, Donald Barnes, hereby certify that the corner location as identified by the corner code index was determined by me under by direction and control and that this U.S. Public Land Survey Monument Record is correct and complete to the best of my knowledge and belief.

Donald Barnes

4-29-97

emboss

Number of included sheets _____

CORNER CODE

A-E 7.08 REQUIREMENT

J-9