

Paper weight-110# (minimum)

Black nonfading ink required

U.S. PUBLIC LAND SURVEY MONUMENT RECORD

For Public Land Survey Corners In:
T. 4 N. R. 10 E. 4th P.M.
CORNER CODE INDEX

WI ADMINISTRATIVE CODE A-E 7.08 REQUIREMENT
REV 10/23/2004 USMONREC.DWG

UNION TWP

ROCK COUNTY WI

IF AVAILABLE
ROCK COUNTY COORDINATES PREFERRED

A	1	2	3	4	5	6	7	8	9	10	11	12	13	14	15	16	17	18	19	20	21	22	23	24	25	A
B		6			5				4				3				2				1					B
C																										C
D																										D
E																										E
F																										F
G																										G
H																										H
J																										J
K																										K
L																										L
M																										M
N																										N
O																										O
P																										P
Q																										Q
R																										R
S																										S
T																										T
U																										U
V																										V
W																										W
X																										X
Y																										Y
Z																										Z

1 2 3 4 5 6 7 8 9 10 11 12 13 14 15 16 17 18 19 20 21 22 23 24 25
PLACE MONUMENT SYMBOL AT PROPER LOCATION ON ABOVE INDEX

North _____ Elev. _____

East _____

Hor. Datum _____ Vert. Datum _____

LATITUDE _____ ELLIPS. HT. _____

LONGITUDE _____

NAD83(91) _____ NETWORK ADJ. YR 2010

GPS (X) _____ TRAVERSE (X)

BASED ON THE FOLLOWING CONTROL:

CORNER MONUMENT

WITNESS MONUMENT

(a)

BEARINGS ARE BASED ON: --- ROCK COUNTY PROJECTION

FIELD BOOK _____ PAGE # _____

OR OBSERVATION SHEET _____

SHEET 1 OF 3

SHOW A PLAN VIEW DRAWING DEPICTING THE CORNER MONUMENT AND SURROUNDING PHYSICAL FEATURES, INCLUDING THE EXCAVATION AREA AND DEPTH.

PLANNING & ZONING COMMITTEE ADOPTED THIS FORM ON 12/2/1982

CORNER CODE L-9

UN556 E1/4CORSEC17

(B) Describe any record evidence, monument evidence, occupational evidence, testimonial evidence or any other material evidence you considered, and whether the monument was found or placed.

- 1833 (NOV) HARRISON T4N R10E 4TH MER. NORTH BETWEEN 16 & 17
2640.00 QUARTER SEC COR. {BURR O 14 S76W 34.32'; BURR O 12 N61E 9.24' BURR O 14 & BURR 12} MARKED
4111.80 WO 24
4521.00 BROOK 9.9' CRS E
5280.00 COR TO SECS 8,9,16,&17 {BURR O 24 N52W 124.08'; BURR O 12 S75W 53.46; W.O. 24 N79E 151.8'; BURR O 30 S43E 7.92' LAND GENTLY LEVEL 2ND RATE WITH BURR & W.O. TIMBER
- 1856 CHURCH VOL 1 PG 59 STATES NOTHING ABOUT MON. USED TO SUBDIVIDE SEC 17, 2664.26 TO CENTER OF SEC 17 & 5328.51 TO W 1/4 COR SEC 17
- 1856 CHURCH VOL 1 PG 60 STATES NOTHING ABOUT MON. USED TO SUBDIVIDE SEC 16. VAR 8-15 2643.96 TO CENTER OF SEC 16 & 5287.92 TO E 1/4 CIR SEC 16
- 1870 RUGER AUG REMON-91 SOUTH ON EAST LINE OF NE 1/4 SEC 17 ON A VAR 7-40; OFFSET WEST 17.16' AT
2663.76 INTERSECTED QUARTER LINE 5.28' WEST OF QUARTER CORNER. FOUND OLD STAKE AT CORNER. COR VAR 7-25'
SOUTH ON EAST LINE OF SE 1/4 SEC 17 ON A VAR 7-40; OFFSET WEST 5.28' OFFSET EAST 17.16' OFFSET WEST 24.42' AT
2636.70 INTERSECTED SOUTH BOUNDARY LINE 21.12' EAST OF CORNER. COR VAR 6-58
- 1890 BLEEDORN VOL 2 PG 430 MON. USED TO SUBDIVIDE SECTION 16 & 17. VAR 6-05 TO CENTER OF SEC 17
- 1938 SUNNY VOL 3 PG 403 FD STONE MON
- 1957 BATTERMANY VOL 3 PG 516 FD CUT STONE. 7.46' EAST OF PVMT CENTER
- 1979 BARNES VOL 5 PG 528 NO-24-25W 2670.20 TO NE COR SEC 17 & S89-04-30W 5355.00 TO W 1/4 COR SEC 17
- 1982 BARNES VOL 6 PG 288 FD CUT STONE SO-27-06E 2641.31 TO SE COR SEC 17
- 1995 LATHROP CSM VOL 18 PG 318 LIMESTONE. NO-38-20E 2669.43 TO PK @ NE COR SEC 17 & N89-54-20W 245.82 ALONG E/W 1/4 LINE TO CENTER OF RD
- 1995 LATHROP CSM VOL 18 PG 458 LS. S1-49-320W 2644.68 TO PK @ SE COR SEC 17 & N89-54-20W 245.82 TO CENTER OF RD.
- 2000 KARNS CSM VOL 23 PG 115 LS S1-15-23W 2644.68 TO PK @ SE COR SEC 17 & N89-54-20W 245.82 TO CENTER OF RD.
- 2001 COMBS #14246 FD STONE MON. S89-51E 26686.75 TO SET PIN @ CENTER OF SEC 16 & S89-51E 5343.13 TO STONE MON @ E 1/4 COR SEC 16
- 2004 COMBS CSM VOL 29 PG 65 LS 2641.94 TO R/R SPIKE @ SE COR SEC 17

FD CUT LIMESTONE 0.2' ABOVE GRADE. SET CARSONITE POST ON NORTH SIDE OF L.S. 246' EAST OF CENTER OF PVMT.

SEAL

SHEET 1 OF 3

Embargo
Donald
Barnes

Dec 22, 2011

CORNER CODE **L-9**

UN556 E1/4CORSEC17

C) Was the corner restored through acceptance of (1) an obliterated evidence location, or, (2) a found perpetuated location?

ACCEPTED FD CUT LIMESTONE, WHICH PERPETUATES OLD STAKE.

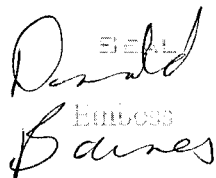
D) Describe any material discrepancy between the location of the corner as restored or reestablished and the location of that corner as previously restored or reestablished by distance and direction. Show the discrepancy on the plan view drawing under (a), above. Show the distances between the corner as previously restored or reestablished and (1) the corner as restored or reestablished, and (2) to at least 4 of the witness monuments shown on the drawing in (a), above.

NONE

(E) Was the corner reestablished through lost corner proportionate methods? If so, show the method, including the directions and distances to other public land survey corners used as evidence or used for proportioning the corner location.

NO

I, **Donald Barnes**, hereby certify that the corner location as identified by the corner code index was determined by me under my direction and control and that this U.S. Public Land Survey Monument Record is correct and complete to the best of my knowledge and belief.


Barnes

Dec 22, 2011

SHEET 2 OF 3

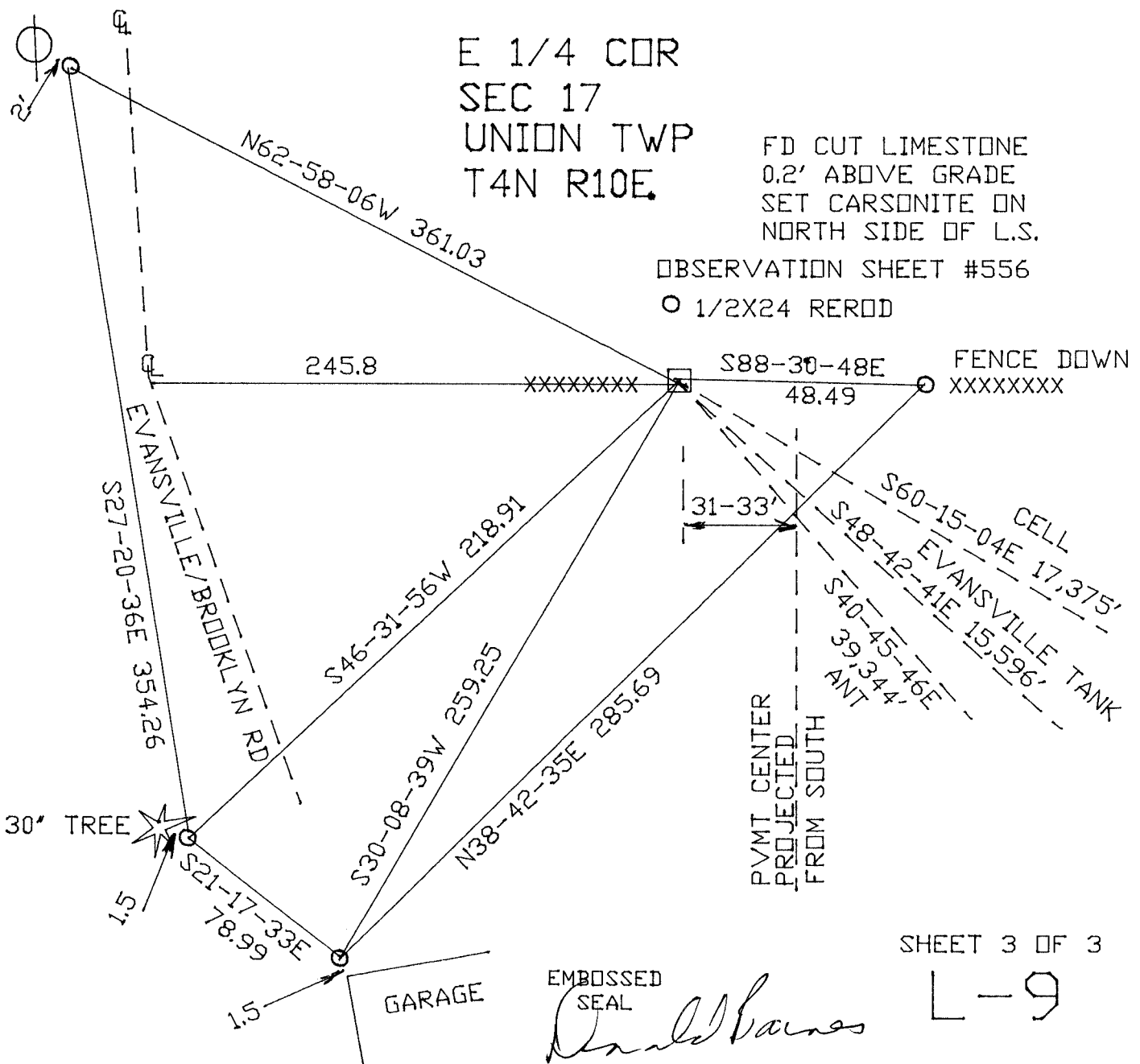
CORNER CODE **L-9**

A.E. 7.08 REQUIREMENT

E 1/4 COR
 SEC 17
 UNION TWP
 T4N R10E.

FD CUT LIMESTONE
 0.2' ABOVE GRADE
 SET CARSONITE ON
 NORTH SIDE OF L.S.

OBSERVATION SHEET #556
 ○ 1/2X24 REROD



SHEET 3 OF 3

EMBOSSSED
 SEAL

Donald Barnes
 Dec 22, 2011

L-9