

# U. S. PUBLIC LAND SURVEY MONUMENT RECORD

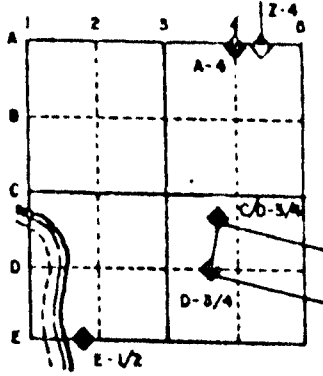
For Public Land Survey Corners in the  
T. 4 N., R. 10 E.

## CORNER CODE INDEX

	1	2	3	4	5	6	7	8	9	10	11	12	13	14	15	16	17	18	19	20	21	22	23	24	25
A																									
B																									
C	6																								
D		5																							
E			4																						
F				3																					
G					2																				
H																									
I																									
J	7																								
K		8																							
L			9																						
M				10																					
N					11																				
O						12																			
P							13																		
Q								14																	
R									15																
S										16															
T											17														
U												18													
V													19												
W														20											
X															21										
Y																22									
Z																	23								
																		24							
																			25						
																				26					
																					27				
																						28			
																							29		
																								30	
																									31
																									32
																									33
																									34
																									35
																									36

PLACE MONUMENT SYMBOL (◆) AT PROPER LOCATION ON ABOVE INDEX

### EXAMPLE



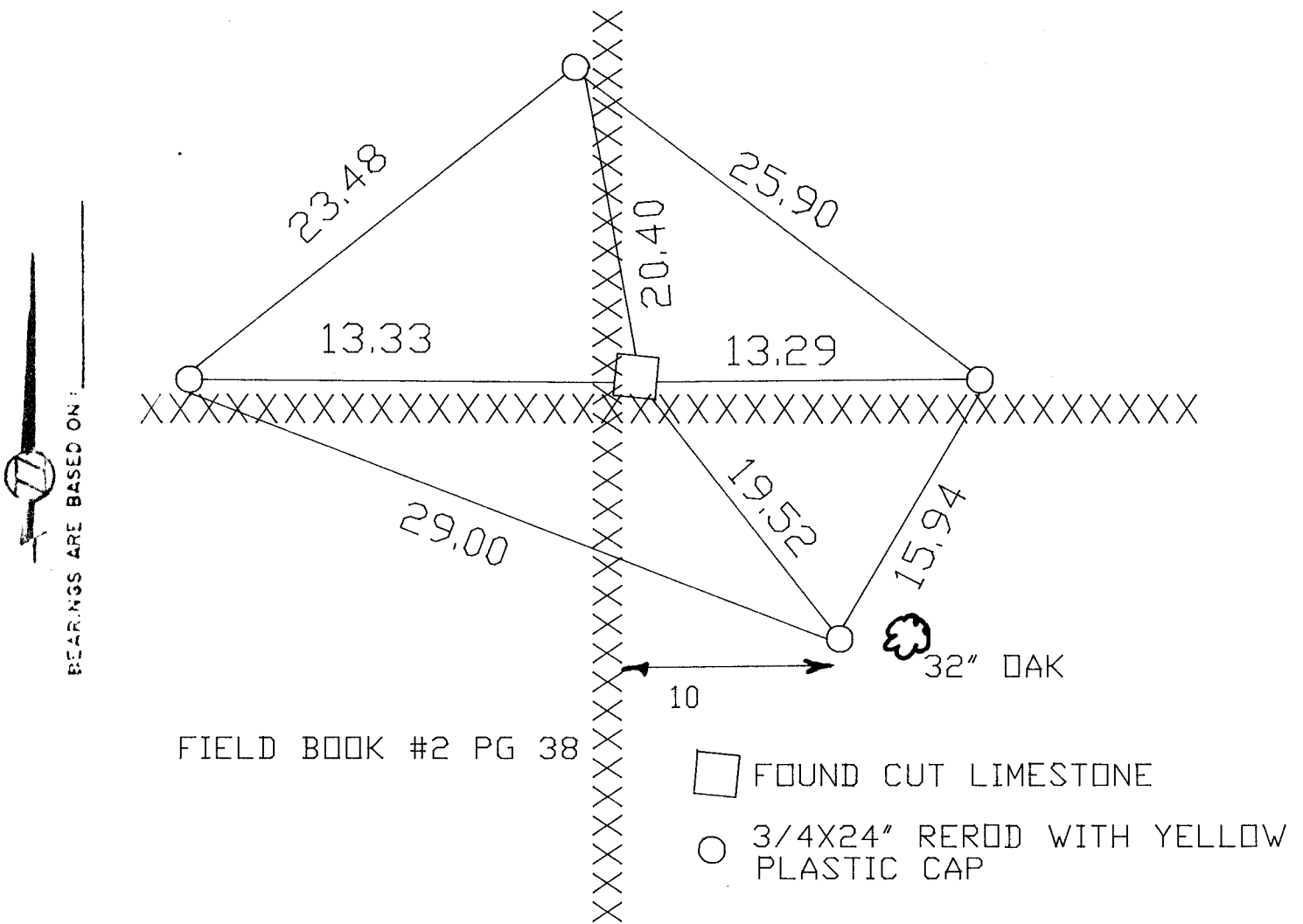
UNION TWP  
ROCK COUNTY WI

IF AVAILABLE  
STATE PLANE COORDINATES

North (Y) \_\_\_\_\_ Eleve. (Z) \_\_\_\_\_  
 East (X) \_\_\_\_\_ Zone \_\_\_\_\_  
 Hor. Datum \_\_\_\_\_ Vert. Datum \_\_\_\_\_

◆ CORNER MONUMENT

○ WITNESS MONUMENT



BEARINGS ARE BASED ON:

FIELD BOOK #2 PG 38

- FOUND CUT LIMESTONE
- 3/4X24" REROD WITH YELLOW PLASTIC CAP

SHEET \_\_\_\_\_ OF \_\_\_\_\_

CORNER CODE: N 13

(B) Describe any record evidence, monument evidence, occupational evidence, testimonial evidence or any other material evidence you considered, and whether the monument was found or placed.

1870 RUGER REMONUMENTATION NOTES FOUND OLD STAKE AT CORNER. PLACED CUT LIMESTONE. CALLS FOR 2662.77 TO E 1/4 CORNER OF SECTION 16, 2663.10 TO N 1/4 CORNER OF SECTION 21, & 2658.65 TO E 1/4 CORNER OF SECTION 21.

1890 BLEEDHORN VOL 2 PG 430 CALLS FOR MONUMENT & SHOWS 2657.16 TO E 1/4 CORNER OF SECTION 16.

1957 BATTERMAN VOL 3 PG 516 FOUND CUT LIMESTONE. SHOWS 2654.81 TO E 1/4 CORNER OF SECTION 16.

FOUND CUT LIMESTONE 0.5' DEEP WITH 1 1/2" PIN AT SE CORNER OF STONE. PLACED CARSONITE POST ON EAST SIDE OF STONE.

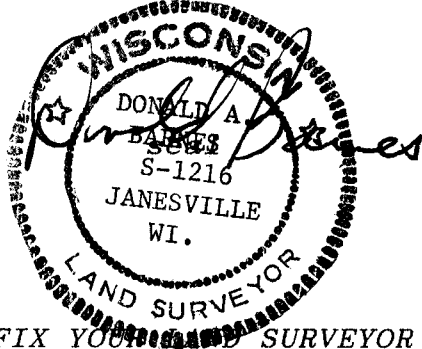
C) Was the corner restored through acceptance of (1) an obliterated evidence location, or, (2) a found perpetuated location?

ACCEPTED FOUND CUT LIMESTONE.

D) Describe any material discrepancy between the location of the corner as restored or reestablished and the location of that corner as previously restored or reestablished by distance and direction. Show the discrepancy on the plan view drawing under (a), above. Show the distances between the corner as previously restored or reestablished and (1) the corner as restored or reestablished, and (2) to at least 4 of the witness monuments shown on the drawing in (a), above.

(E) Was the corner reestablished through lost corner proportionate methods? If so, show the method, including the directions and distances to other public land survey corners used as evidence or used for proportioning the corner location.

I, Donald Barnes, hereby certify that the corner points as identified by the corner code index were, in a field survey on, May 9, 1991, established, re-established, monumented, re-monumented, recovered or restored as expressed below and in conformance with the regulations and rules as required in the current manual of survey instructions of the United States Department of Interior, Bureau of Land Management.



AFFIX YOUR SURVEYOR SEAL

COUNTY SURVEYOR FILING DATA

Date of computer entry \_\_\_\_\_

Date microfilmed \_\_\_\_\_

Number of included sheets \_\_\_\_\_  
CORNER CODE

N 13