

Paper weight-110# (minimum)

Black nonfading ink required

U.S. PUBLIC LAND SURVEY MONUMENT RECORD

For Public Land Survey Corners In:
T. 4 N. R. 10 E. 4th P.M.
CORNER CODE INDEX

WI ADMINISTRATIVE CODE A-E 7.08 REQUIREMENT
REV 10/23/2004 USMONREC.DWG

UNION TWP
ROCK COUNTY WI

IF AVAILABLE
ROCK COUNTY COORDINATES PREFERRED

A	1	2	3	4	5	6	7	8	9	10	11	12	13	14	15	16	17	18	19	20	21	22	23	24	25	A
B		6			5			4			3			2			1									B
C																										C
D																										D
E																										E
F																										F
G																										G
H																										H
J																										J
K																										K
L																										L
M																										M
N																										N
O																										O
P																										P
Q																										Q
R																										R
S																										S
T																										T
U																										U
V																										V
W																										W
X																										X
Y																										Y
Z																										Z

North _____ Elev. _____

East _____

Hor. Datum _____ Vert. Datum _____

LATITUDE _____ ELLIPS. HT. _____

LONGITUDE _____

NAD83(91) _____ NETWORK ADJ. YR 2010 _____

GPS (X) _____ TRAVERSE (X) X

BASED ON THE FOLLOWING CONTROL:

PLACE MONUMENT SYMBOL **◆** AT PROPER LOCATION ON ABOVE INDEX

◆ CORNER MONUMENT

○ WITNESS MONUMENT

BEARINGS ARE BASED ON: ROCK COUNTY PROJECTION

FIELD BOOK _____ PAGE # _____

OR OBSERVATION SHEET _____

SHEET 1 OF 4

SHOW A PLAN VIEW DRAWING DEPICTING THE CORNER MONUMENT AND SURROUNDING PHYSICAL FEATURES, INCLUDING THE EXCAVATION AREA AND DEPTH.

PLANNING & ZONING COMMITTEE ADOPTED THIS FORM ON 12/2/1982

CORNER CODE N-21(1)

UN571 NECORSEC23

(B) Describe any record evidence, monument evidence, occupational evidence, testimonial evidence or any other material evidence you considered, and whether the monument was found or placed.

- 1833 (NOV5) HARRISON T4N R10E NORTH BET SECS 22 & 23
2640.00 QUARTER SEC COR. {BURR O 12 S60W 25.74';
BURR O. 18 N64W 64.68' BURR O 12 & BURR O
12}MARKED
4062.96 BURR O 18
5280 COR TO SECS 14,15,22,23
{BURR O 12 S23W 36.3', BURR O 10 N20E
24.42', BURR O 10 N50W 17.16'; BURR O 12
S65E 14.52' LAND ROLLING 2ND RATE TIMBER
ALL BURR O. MOSTLY SCRUB GRASS & WEEDS
- 1833 (NOV) HARRISON T4N R10E 4TH MER. EAST ON RAND. BET.
SECS 13 & 24
2640.0 TEMPY 1/4 SEC COR.
5188.92 INT. EAST BDY 66' NORTH OF POST LAND &
SAME
WEST COR. WEST BET 13 & 24
2594.46 QUARTER SEC COR. BURR OAK 18 N62W 36.96';
HICKORY 13 S20E 58.74' BURR OAK 18;
HICKORY 13}MARKED
5188.92 SEC COR
- 1833 (NOV) HARRISON T4N R10E 4TH MER. EAST ON RAMDOM
BET 14 & 23
2640.00 TEMPY 1/4 SEC COR
5243.70 INT. E AT POST LAND & ???
WEST COR-WEST BET SECS 14 & 23
2621.85 QUARTER SEC COR {BURR O 14 S2W 50.16';
BURR O 18 N70W 26.4' BURR O 14 & BURR O
18}MARKED
4162.62 BURR O 18 IN. DIAM
5243.70 INT. SEC COR NOV 6TH 1833
- 1833 (NOV5) HARRISON T4N R10E NORTH BET 13 & 14
1599.84 BURR O 22
2640.00 QUARTER SEC. COR. BURR O 18 N42E 9.9";
BURR OAK 18 S41E 52.14' BURR 18 & BURR
18}MARKED
2871.00 ROAD E & W & LEAVE TIMBER AND ENTER
PRAIRIE
3796.98 BROOK 3.3' CRS N.E.
4620.0 SPRING & ?? S.E.
5280.00 SEC COR TO SECS 11,12,13,14. SET A POST &
RAISED A MOUND LAND 1ST 1/2 MILE SAME AS
BEFORE AND 2 1/2 ROLLING PRAIRIE 2ND RATE
SOMEWHAT WET.
- 1870 RUGER AUG REMON-74 SOUTH ON WEST LINE OF NW
1/4 SEC 24 ON A VAR 7-07 AT
2661.78 INTERSECTED QUARTER LINE 4.62' EAST OF
QUARTER CORNER FOUND OLD STAKE AT
CORNER. ALSO FOUND STUMP OF EAST
BEARING TREE. COR VAR 7-01'
SOUTH ON WEST LINE OF SW 1/4 SEC 24
ON A VAR 6-53 OFFSET EAST 11.55' AT
2650.06 INTERSECTED SOUTH BOUNDARY LINE 3.3' EAST
OF CORNER. COR VAR 7-04'
- 1870 RUGER AUG REMON-73 WEST ON NORTH LINE OF NE 1/4
SEC 24 ON A VAR 6-30 AT
2621.19 INTERSECTED QUARTER LINE 3.63' NORTH OF
QUARTER CORNER. FOUND REMAINS OF OLD
STAKE AND STUMP OF NORTH BEARING TREE
AND REMAINS OF STUMP OF SOUTH BEARING
TREE. COR. VAR 6-35

SHEET OF 4

CORNER CODE N-21(1)

Donald Barnes
2551
515033

NOV 1, 2011

UN571 NECORSEC23

- WEST ON NORTH LINE OF NW 1/4 SEC 24 ON A
VAR 6-30 OFFSET NORTH 3.63' AT
2614.92 INTERSECTED WEST BOUNDARY LINE 19.8' NORTH
OF CORNER FOUND REMAINS OF OLD STAKE AT
CORNER. ALSO FOUND STUMPS OF BOTH
BEARING TREES. COR VAR 6-51
- 1870 RUGER AUG REMON-74 WEST ON NORTH LINE OF NE 1/4
SEC 23 ON A VAR 7-06 OFFSET NORTH 15.18'
OFFSET SOUTH 42.24' AT
2635.54 INTERSECTED QUARTER LINE 33.66' SOUTH OF
QUARTER CORNER. FOUND OLD STAKE AT
CORNER. COR VAR 6-58
WEST ON NORTH LINE OF NW 1/4 SEC 23
ON A VAR 8-15 OFFSET NORTH 15.18' AT
2626.14 INTERSECTED WEST BOUNDARY LINE 23.1'
SOUTH OF CORNER. FOUND REMAINS OF
STUMPS OF 3 BEARING TREES. ESTABLISHED
CORNER FROM BEARING TREES. COR VAR 7-25
- 1870 RUGER AUG REMON-101 SOUTH ON EAST LINE OF NE 1/4
SEC 14 ON A VAR 7-05; OFFSET WEST 6.6' AT
2648.25 INTERSECTED QUARTER LINE 9.24'. WEST OF
QUARTER CORNER. FOUND REMAINS OF OLD
STAKE AT CORNER. ALSO FOUND REMAINS OF
SOUTH BEARING STUMP. STAKE CORRECT. COR
VAR 7-08
SOUTH ON EAST LINE OF SE 1/4 SEC 14 ON A
VAR 6-50; AT
2659.47 INTERSECTED SOUTH BOUNDARY LINE AT
CORNER.
- 1875 RUGER VOL 2 PG 201 STONE MON.
1884 RUGER VOL 2 PG 294 STATES NOTHING ABOUT MON.
2638.02 TO N 1/4 COR SEC 23
- 1940 SUNNY VOL 3 PG 463 FD 6X6 CUT STONE MON. SET 1 1/2
CAPPED PIPE ON TOP FOR COR. REF. COR. 2668.1 TO E 1/4
COR SEC 23.
- 1968 BATTERMAN FB#142 PG 46. DUG & FD CUT STONE (BROKEN
OFF) 2' DEEP. PK NAILS 6' WEST & 6' SOUTH.
- 1970 BATTERMAN VOL 4 PG 449 FD CUT STONE SET R/R SPIKE
OVER STONE. REFERENCED SAME. 2668.45 TO CI @ W 1/4
COR SEC 24
- 1970 DOT CTH M #13063
1972 DOT CTH M #7430 PROJ E0624(16) SHEET 4.4 & 4.5.
SECTION CORNER ESTABLISHED FROM REFERENCES. PI
96+96.88 IS 11.7X WEST OF SEC COR & 1.0 SOUTH OF
CORNER
- 1974 KIENBAUM CSM VOL 4 PG 69 1" PIPE. USED PK @ W 1/4 COR
SEC 13 FOR LINE.
- 1992 COMBS CSM VOL 16 PG 5 FD ALUM. 2668.74 TO FD ALUM
@ E 1/4 COR SEC 23.
- 1993 SCHEEBERGER CSM VOL 17 PG 121 1" PIPE 2668.77 TO FD
ALUM @ W 1/4 COR SEC 24
- 1996 COMBS CSM VOL 19 PG 312 ALUM MON.
- 1997 MARKS N-21 I FD A 1 1/4 IRON PIPE WHICH I BELIEVE WAS
SET BY THE COUNTY SURVEYOR OVER A 6X6 CUT STONE HE
FOUND IN 1940. REFERENCED SAME. 293,253.292;
2,164,507.587 NAD83 LAT 42-48-08.07384131; LONG 89-
16-10.70892354 BASED ON EVANSVILLE STATION GPS.
[CONVERTED TO COUNTY 312,685.81; 427,015.12' SCALE
0.9999992071 CONV. ANGLE - 0-08-03
- 1997 MARKS #8680 FD 1 1/4 IRON PIPE 2640.57 TO SQUARE
STONE @ N 1/4 COR SEC 23
- 1998 KARNS CSM VOL 22 PG 54 FD ROCK COUNTY MON. 2664.59
TO FD ROCK COUNTY MON @ W 1/4 COR SEC 13

SHEET 2 OF 4

SEAL
Emboss
Donald Baines
Nov 1, 2011

CORNER CODE N-21(1)

UN571 NECORSEC23

- 1999 COMBS #7453 FD IRON PIPE. S89-56-40W 2640.30 TO CUT STONE @ N 1/4 COR SEC 23 & S0-05-05E 2668.75 TO CUT STONE @ E 1/4 COR SEC 23
- 2001 COMBS CSM VOL 24 PG 326-327 #14124 FD IRON PIPE 2619.64 TO FD POLYSTRENE MON @ N 1/4 COR SEC 24
- 2002 COMBS CSM VOL 25 PG 131 FD PIPE NORTH 2664.59 TO SET PK @ W 1/4 COR SEC 13
- 2004 JRH CSM VOL 28 PG 51 FD 1" PIPE. S89-57-01W 2640.37 TO CUT STONE & 2664.59 TO COMPUTED POSITION FROM TIES TO CSM25-131
- 2004 COMBS CSM VOL 27 PG 146 IRON PIPE 2640.48 TO CUT STONE @ N 1/4 COR SEC 23
- 2005 COMBS #15121 FD PIPE. S88-12-04E 33.0 ALONG SEC LINE TO FD PIN, & S1-46-39W 2668.71 TO FD POLY MON @ W 1/4 COR SEC 23. SHOWS AS CENTER OF N. TUPPER RD.
- 2006 COMBS #15546 FD IRON PIPE. N88-12-04W 486.32 & S1-46-39W 2668.71 TO POLY @ W 1/4 COR SEC 23.

FD PIPE & REFERENCE TIES.

C) Was the corner restored through acceptance of (1) an obliterated evidence location, or, (2) a found perpetuated location?

ACCEPTED FD PIPE, WHICH PERPETUATES FD CUT LIMESTONE.

D) Describe any material discrepancy between the location of the corner as restored or reestablished and the location of that corner as previously restored or reestablished by distance and direction. Show the discrepancy on the plan view drawing under (a), above. Show the distances between the corner as previously restored or reestablished and (1) the corner as restored or reestablished, and (2) to at least 4 of the witness monuments shown on the drawing in (a), above.

NONE

(E) Was the corner reestablished through lost corner proportionate methods? If so, show the method, including the directions and distances to other public land survey corners used as evidence or used for proportioning the corner location.

NO

I, **Donald Barnes**, hereby certify that the corner location as identified by the corner code index was determined by me under my direction and control and that this U.S. Public Land Survey Monument Record is correct and complete to the best of my knowledge and belief.

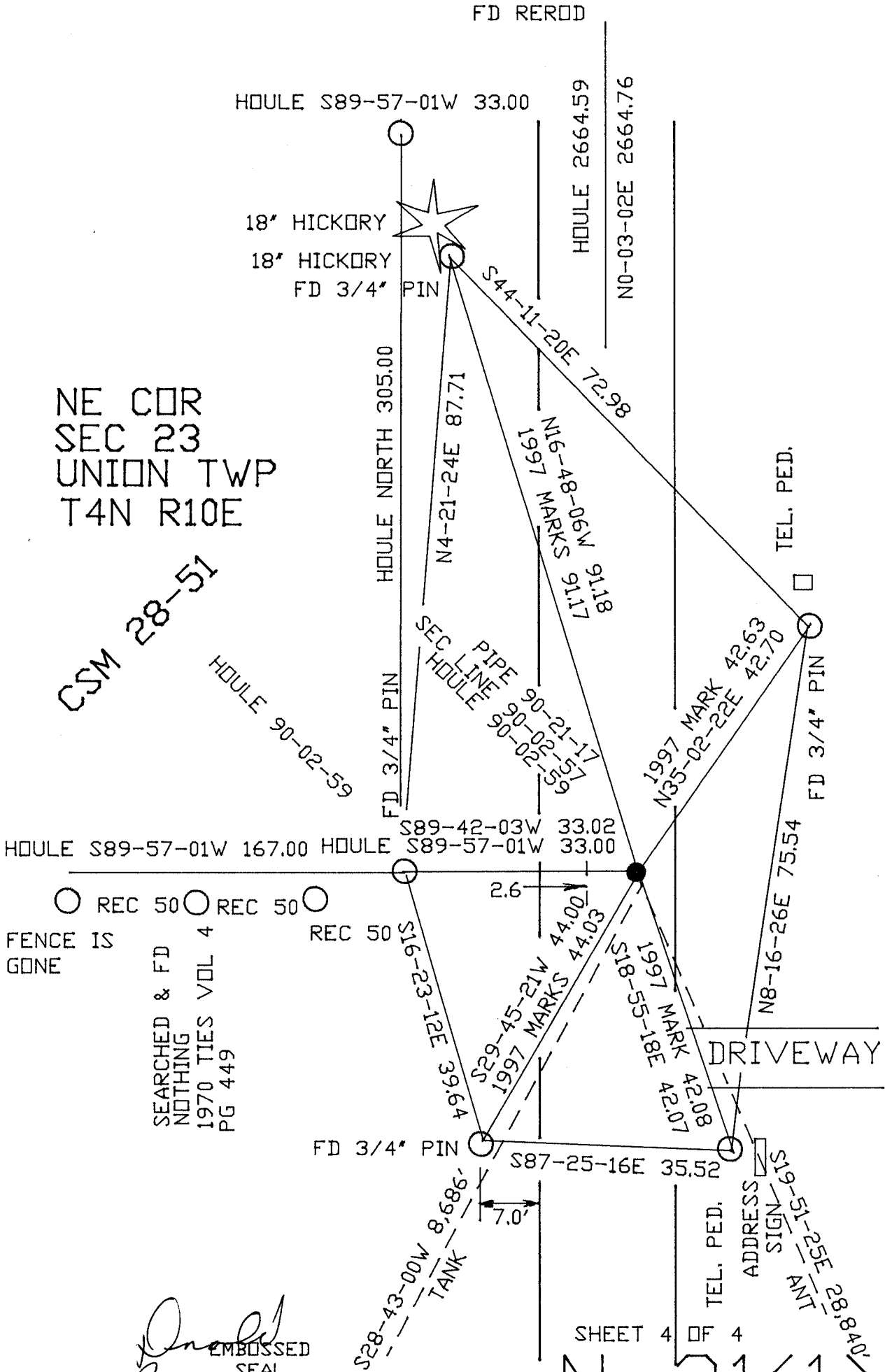
Donald Barnes
Nov 1, 2011

SHEET 3 OF 4

CORNER CODE N-21(1)
A.E. 7.08 REQUIREMENT

NE COR
SEC 23
UNION TWP
T4N R10E

CSM 28-51



○ REC 50 ○ REC 50 ○ REC 50
FENCE IS GONE

SEARCHED & FD
NOTHING
1970 TIES VOL 4
PG 449

Donald Barnes
EMBOSSSED SEAL
NOV 1, 2011

SHEET 4 OF 4

N-21(1)

TEL. PED.
ADDRESS SIGN
M/T 15-61S
M/T 2E-15-61S
M/T 18-8401