

Paper weight-110# (minimum)

Black nonfading ink required

U.S. PUBLIC LAND SURVEY MONUMENT RECORD

For Public Land Survey Corners In:

WI ADMINISTRATIVE CODE A-E 7.08 REQUIREMENT

T. 4 N. R. 10 E. 4th P.M.

REV 10/23/2004

USMONREC.DWG

CORNER CODE INDEX

	1	2	3	4	5	6	7	8	9	10	11	12	13	14	15	16	17	18	19	20	21	22	23	24	25		
A																											A
B																											B
C																											C
D																											D
E																											E
F																											F
G																											G
H																											H
J																											J
K																											K
L																											L
M																											M
N																											N
O																											O
P																											P
Q																											Q
R																											R
S																											S
T																											T
U																											U
V																											V
W																											W
X																											X
Y																											Y
Z																											Z

UNION TWP
ROCK COUNTY WI

IF AVAILABLE
ROCK COUNTY COORDINATES PREFERRED

North _____ Elev. _____

East _____

Hor. Datum _____ Vert. Datum _____

LATITUDE _____ ELLIPS. HT. _____

LONGITUDE _____

NAD83(91) _____ NETWORK ADJ. YR _____

GPS (X) _____ TRAVERSE (X) _____

BASED ON THE FOLLOWING CONTROL:

PLACE MONUMENT SYMBOL AT PROPER LOCATION ON ABOVE INDEX

CORNER MONUMENT WITNESS MONUMENT

BEARINGS ARE BASED ON: _____

FIELD BOOK _____ PAGE # _____

SHEET 1 OF 3

SHOW A PLAN VIEW DRAWING DEPICTING THE CORNER MONUMENT AND SURROUNDING PHYSICAL FEATURES, INCLUDING THE EXCAVATION AREA AND DEPTH.

PLANNING & ZONING COMMITTEE ADOPTED THIS FORM ON 12/2/1982

CORNER CODE E 21(1)

UN531 NWCORSEC12

(B) Describe any record evidence, monument evidence, occupational evidence, testimonial evidence or any other material evidence you considered, and whether the monument was found or placed.

1833 HARRISON EAST ON RAND. BET 2 & 11

2640 TEMPY 1/4 SEC
5227.2 INT. E BDY 9.9' N OF P. LAND LEVEL 2ND
RATE TIMBER ALL BURR O. MOSTLY
GRASS & WEEDS

WEST COR. BET. SEC 2 & 11

2613.6 QUARTER SEC COR. {BURR O 18" S37E
91.74' BURR O 18" N64W 48.84' BURR
O 18 BURR O 18
NOV 7TH 1833

NORTH BET SECS 11 & 12

1069.2 PRAIRIE CR& E
2640 QUARTER SEC. COR. SET POST & RAISED
MOUND

4620.0 SE POINT OF TIMBER
5280 SET POST FOR COR TO SECS 1,2,11, 12
NEAR SE POINT OF TIMBER
{BURR O 10" S86W 115.5', BURR O 12"
S21W 198' NO OTHER NEAR
LAND ROLLING 1ST RATE PRAIRIE
NOV 5TH 1833

EAST ON RAND BET SECS 1 & 12

2640 TEMPY 1/4 SEC COR
4509.78 BROOK 5.28' CURR SE (NE)
5200.8 INT. E 54.78' N OF P. LAND ROLLING 1ST
RATE PRAIRIE

WEST COR. BET 1 & 12

2600.40 QUARTER SEC COR. SET A POST &
RAISED MOUND
5200.80 SEC COR.

NORTH BET. SECS 1 & 2

2145.0 LEAVE PRAIRIE & ENTER TIMBER
2640.0 SET COR TO QUARTER SEC {BURR O 8"
N87E 51.48'
5205.42 INT. N BDY 12.54' WEST OF POST {BLK O
24" S50E 172.92', W O. 18" S51W
109.56'
LAND LEVEL 2ND RATE ALONG N 1/2
ROLLING 1ST RATE PRAIRIE SOUTH 1/2
NOV 5 1833

1870 RUGER REMON FIELD NOTES (SEPTEMBER) SET CUT L.S.

PG 110 WEST ON NORTH LINE OF NE 1/4 SEC 11
ON A VAR 7-47 AT

2601.06' INTERSECTED QUARTER LINE AT QUARTER
CORNER. FOUND OLD STAKE AT CORNER
ALSO FOUND NORTH BEARING TREE AND
STUMP OF SOUTH BEARING TREE.

WEST ON NORTH LINE OF NW 1/4 SEC 11 ON A
VAR 7-30 AT

2629.77 INTERSECTED WEST BOUNDARY LINE AT
CORNER. FOUND OLD STAKE AND PIECES
OF IRON AT COR. ALSO FD STUMPS OF
BOTH BEARING TREES.

PG 104 EAST ON NORTH LINE OF NW 1/4 SEC 12 ON A
VAR 6-50; OFF SET SOUTH 9.9' AT

2618.88 INTERSECTED QUARTER LINE AT QUARTER
CORNER FOUND OLD STAKE AT CORNER
COR VAR 6-37

EAST ON NORTH LINE OF NE 1/4 SEC 12 ON A
VAR 6-40 AT

2620.2 INTERSECTED EAST BOUNDARY LINE
17.16' NORTH OF CORNER. CORNER 3

SHEET 1 OF 4

CORNER CODE E-21(1)

Donald Barnes
8-06-2009

UN531

NWCORSEC12

LOST. ESTABLISHED IT FROM QUARTER
CORNERS NEXT ADJACENT NORTH AND
SOUTH. COR VAR 6-28

PG 105 NORTH ON EAST LINE OF SE 1/4
SEC 1 ON A VAR 6-30 OFF SET EAST 3.96' AT
2657.16 INTERSECTED QUARTER LINE 9.57' EAST
OF QUARTER CORNER. FOUND STUMP OF
NORTH BEARING TREE AND REMAINS OF
STUMP OF SOUTH BEARING TREE.
ESTABLISHED QUARTER CORNER FROM
THEM. COR VAR 6-37

- 1884 RUGER VOL 2 PG 387 FD STONE MON. SHOWS 2601.06 TO S
1/4 COR SEC 2 & 2659.80 TO EAST QUARTER COR OF SEC 2.
- 1970 BATTERMAN VOL 4 PG 442 FD CUT LIMESTONE 1.5' DEEP.
PLACED TIES.
- 1970 WEIR CSM VOL 1 PG 317 & #5127 CUT STONE @ NE & N 1/4
CORNERS SEC 11. ANGLE 89-42 @ NE COR SEC 11 FROM
CUT STONE @ E 1/4 COR SEC 11 TO CUT STONE @ N 1/4 COR
SEC 11. SOUTH FROM NE 11 33.00 TO R/W PIPE ON EAST
LOT SIDE, 226.00 ALONG NORTH LINE OF SEC 11 TO NW COR
OF LOT; THENCE SOUTHERLY 33 TO R/W LINE.
- 1971 WEIR CSM VOL 2 PG 101 CUT STONE @ N 1/4 COR & NE COR
SEC 11. FROM NE COR SEC 11 WESTERLY 863.27 TO NE COR
OF LOT. SOUTHERLY R/W LINE IS 33.0'
- 1972 WEIR CSM VOL 2 PG 245 STATES NOTHING ABOUT N 1/4 OR
NE CORNERS OF SEC 11. WESTERLY FROM NE COR SEC 11
593.10 TO NE COR OF LOT. SOUTHERN R/W LINE IS 33'.
- 1975 KERMIT WILHELM VOL 5 PG 161 FD COUNTY MONUMENT.
SHOWS 2601.47 TO S 1/4 COR SEC 2 & 2665.99 TO EAST
QUARTER COR SEC 2.
- 1981 COMBS CSM VOL 10 PG 430 @ NW COR SEC 12 FD CI. @ N
1/4 COR SEC 12 SET 3/4 PIN. ANGLE 90-51 @ N 1/4 COR
SEC 2 FROM N/S 1/4 LINE TO NW COR SEC 12. WESTERLY
FROM N 1/4 COR SEC 12 330.01 TO NW LOT COR. SOUTHERN
R/W LINE IS 40.0
- 1988 BARNES E-21 FD CAST IRON MON & REFERENCE MONUMENTS.
PORTER TWP FB#3 PG 9

PRIOR TO RESURFACING I SEARCHED AND FD NOTHING @ PVMT
SURFACE. STRONG METAL SOUND @ LOCATION. FD REFERENCE
PIPES. NEED TO UNCOVER CI PRIOR TO OR AFTER RESURFACING.
FD REFERENCE MONUMENTS.

C) Was the corner restored through acceptance of (1) an obliterated evidence location, or, (2) a found perpetuated location?

D) Describe any material discrepancy between the location of the corner as restored or reestablished and the location of that corner as previously restored or reestablished by distance and direction. Show the discrepancy on the plan view drawing under (a), above. Show the distances between the corner as previously restored or reestablished and (1) the corner as restored or reestablished, and (2) to at least 4 of the witness monuments shown on the drawing in (a), above.

I, DONALD BARNES, hereby certify that the corner location as identified by the corner code index was determined by me under my direction and control and that this U.S. Public Land Survey Monument Record is correct and complete to the best of my knowledge and belief.

Seal

Emboss

SHEET 2 OF 3

8-6-2009

CORNER CODE E-21(1)

A.E. 7.08 REQUIREMENT

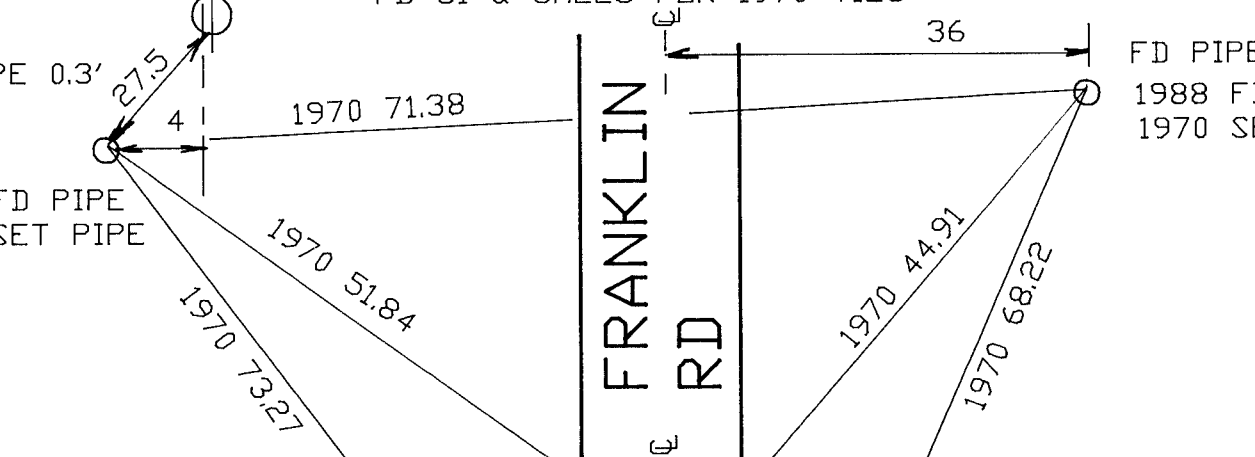
1970 BATTERMAN VOL 4 PG 442
FD CUT STONE 1.5' DEEP, 3' E & 2' SOUTH
OF CENTER PVMT.

1988 BARNES E-21 & PORTER TWP FB#3 PG 9
FD CI & CALLS FOR 1970 TIES

FD PIPE 0.3'
DEEP

FD PIPE
1988 FD PIPE
1970 SET PIPE

1988 FD PIPE
1970 SET PIPE



STH 59

NOTHING
@ SURFACE
STRONG METAL
SOUND

1988 FD CI

SW COR
SEC 1
UNION TWP

PRIOR TO RESURFACING

NEED TO UNCOVER
CI PRIOR TO OR
AFTER RESURFACING

FD PIPE
1988 FD PIPE
1970 SET PIPE

1988 FD 1 1/2 PIPE
FD PIPE

CSM VOL 1 PG 317
1970 WEIR

SHEET 3 OF 3

D. D. D.

EMBOSSSED
SEAL
Barnes

8-62009

E-21(1)