

Paper weight-110# (minimum)

Black nonfading ink required

U.S. PUBLIC LAND SURVEY MONUMENT RECORD

For Public Land Survey Corners In:
T. 4 N. R. 10 E. 4th P.M.
CORNER CODE INDEX

WI ADMINISTRATIVE CODE A-E 7.08 REQUIREMENT
REV 10/23/2004 USMONREC.DWG

UNION TWP

ROCK COUNTY WI

IF AVAILABLE
ROCK COUNTY COORDINATES PREFERRED

A	1	2	3	4	5	6	7	8	9	10	11	12	13	14	15	16	17	18	19	20	21	22	23	24	25	A
B			6				5					4				3				2				1		B
C																										C
D																										D
E																										E
F																										F
G																										G
H																										H
J																										J
K																										K
L																										L
M																										M
N																										N
O																										O
P																										P
Q																										Q
R																										R
S																										S
T																										T
U																										U
V																										V
W																										W
X																										X
Y																										Y
Z																										Z

PLACE MONUMENT SYMBOL AT PROPER LOCATION ON ABOVE INDEX

North _____ Elev. _____

East _____

Hor. Datum _____ Vert. Datum _____

LATITUDE _____ ELLIPS. HT. _____

LONGITUDE _____

NAD83(91) _____ NETWORK ADJ. YR 2010

GPS (X) _____ TRAVERSE (X)

BASED ON THE FOLLOWING CONTROL:

CORNER MONUMENT

WITNESS MONUMENT

BEARINGS ARE BASED ON: ROCK COUNTY PROJECTION

FIELD BOOK _____ PAGE # _____
OR OBSERVATION SHEET _____

SHEET 1 OF 3

SHOW A PLAN VIEW DRAWING DEPICTING THE CORNER MONUMENT AND SURROUNDING PHYSICAL FEATURES, INCLUDING THE EXCAVATION AREA AND DEPTH.

PLANNING & ZONING COMMITTEE ADOPTED THIS FORM ON 12/2/1982

CORNER CODE E-11

UN526 S1/4CORSEC4

(B) Describe any record evidence, monument evidence, occupational evidence, testimonial evidence or any other material evidence you considered, and whether the monument was found or placed.

- 1833 (NOV) HARRISON (NOV 9) T4N R10E 4TH MER. EAST ON
RAND BET 4 & 9
2640.00 TEMPY 1/4 SEC COR
5290.56 INT E BDY 26.4' S OF P LAND ROLLING 2ND
RATE TIMBER RED & BURR O UNDERGROWTH
GRUBS, GRASS & WEEDS
WEST COR WEST BET 4 & 9
2645.28 QUARTER SEC COR {RED O 10 S68W 53.46'; RED
O S34E 58.08' TED O 10 & RED O 10} MARKED
5290.56 SEC COR
- 1870 RUGER AUG REMON-116 WEST ON SOUTH LINE OF SE 1/4
SEC 4 ON A VAR 7-20; AT
2667.72 INTERSECTED QUARTER LINE 13.2' NORTH OF
QUARTER CORNER. FOUND OLD STAKE AT
CORNER. ALSO FOUND WEST BEARING TREE AND
STUMP OF EAST BEARING TREE. COR VAR 7-37
WEST ON SOUTH LINE OF SW 1/4 SEC 4
ON A VAR 7-20; OFFSET NORTH 1.32 AT
2654.52 INTERSECTED WEST BOUNDARY LINE 47.52'
NORTH OF CORNER. FOUND OLD STAKE AT
CORNER. ALSO FOUND STUMP OF BEARING TREE.
COR VAR 8-20
- 1971 LEE VOL 4 PG 532 DUG & FD CUT STONE ON WEST SIDE OF
IRON PIPE FENCE BRACE IN CEM. CONC. SET CI HARRISON
MON. OVER IT. 2663.76 TO NW COR SEC 9, N89-58-44E
2671.47 TO NE COR SEC 9, & S0-06-29E 5345.87 TO S 1/4
COR SEC 9. ON SOUTH R/W LINE OF STEWART RD. REF.
SAME.
- 1971 SHARKY CSM VOL 2 PG 167 FD CUT STONE. USED CUT
STONE @ SE COR SEC 4 FOR LINE. @ S1/4 COR SEC 4
THENCE N67-46-55E 30.00 TO PIPE THENCE S22-13-05E
12.24 TO PIPE; THENCE S89-58-44W 32.40 TO CUT STONE.
- 1978 LEE #5073 FD CI. NO-07-41W 2648.88 TO CENTER OF SEC 4
& NO-07-41W 5193.91 TO CUT STONE @ N 1/4 COR SEC 4
- 1992 WIDOT 2004 BARNES E-11(1) INFORMATION COPIED FROM
WIDOT R/W PLATS PROJ. #5155-01-21 AND DATE IS SHOWN
ON OPPOSITE SIDE. WHEN COORDINATES WERE SHOWN IN
METERS I REDUCED THEM TO US SURVEY FEET. I REDUCED
NAD 83 COORDINATES TO COUNTY COORDINATES. STONE
MON. S 1/4 COR TO SE COR SEC 4 N89-09-35E 2671.49
323,378.71; 413,794.69
- 1993 WIDOT STH 14 PROJ 5155-01-21 SHEET 4.3 #25391 STONE
MON 303,798.26; 2,151,170.03
- 1994 KRIZAN #9516 FD HARRISON MON. N89-58-44E 2671.58
TO SQUARE LIMESTONE @ SE COR SEC 4.
- 1994 KRIZAN E-11 FD HARRISON MON. AS SHOWN ON A SURVEY
RECORDED ON VOL 2 PG 167 AND IN PLAT & REC VOLUME
PAGE 532. REFERENCED SAME. 0.5' WEST OF N/S FENCE &
4' SOUTH OF END OF N/S FENCE ON SOUTH SIDE OF
STEWART RD.
- 1998 WALKER #8248 & #8249 HARRIS MON. S89-59-09E 364.09
ALONG SEC LINE TO REROD, S0-10-32E 156.63 9REC
156.69) TO FD IRON STAKE ON N/S 1/4 LINE. FROM S 1/4
COR SEC 4 N67-46-55E 29.94 TO REROD ON SOUTH R/W OF
STEWART RD.
- 1998 COMBS #8234 FD CI 2664.25 TO STONE MON @ NW COR
SEC 9
- 1999 WALKER CSM VOL 22 PG 418 FD CI USED STONE @ NE COR
SEC 9 FOR LINE.

SEAL

Rogers
Daines

Oct 24, 2011

SHEET 1 OF 3

CORNER CODE E-11(1)

UN526 S1/4CORSEC4

2004 KRIZAN E-11 FD HARRISON MON. 4' SOUTH OF NORTH END OF FENCE LINE & 0.5' WEST OF FENCE LINE. REFERENCED SAME. SOUTH SIDE OF STEWART RD.

2005 KARNs #15094 FD ROCK COUNTY SEC CORNER, N89-58-44E TO FD ROCK COUNTY SEC CORNER @ SE COR SEC 4.

2008 LATHROP GSM VOL 32 PG 300 FD CI 2671.49 TO FD PIN @NE COR SEC 9

FD CI. SET CARSONITE POST.

C) Was the corner restored through acceptance of (1) an obliterated evidence location, or, (2) a found perpetuated location?

ACCEPTED FD CI, WHICH PERPETUATES FD CUT LIMESTONE.

D) Describe any material discrepancy between the location of the corner as restored or reestablished and the location of that corner as previously restored or reestablished by distance and direction. Show the discrepancy on the plan view drawing under (a), above. Show the distances between the corner as previously restored or reestablished and (1) the corner as restored or reestablished, and (2) to at least 4 of the witness monuments shown on the drawing in (a), above.

NONE

(E) Was the corner reestablished through lost corner proportionate methods? If so, show the method, including the directions and distances to other public land survey corners used as evidence or used for proportioning the corner location. NO

I, **Donald Barnes**, hereby certify that the corner location as identified by the corner code index was determined by me under my direction and control and that this U.S. Public Land Survey Monument Record is correct and complete to the best of my knowledge and belief.


SEAL
Barnes

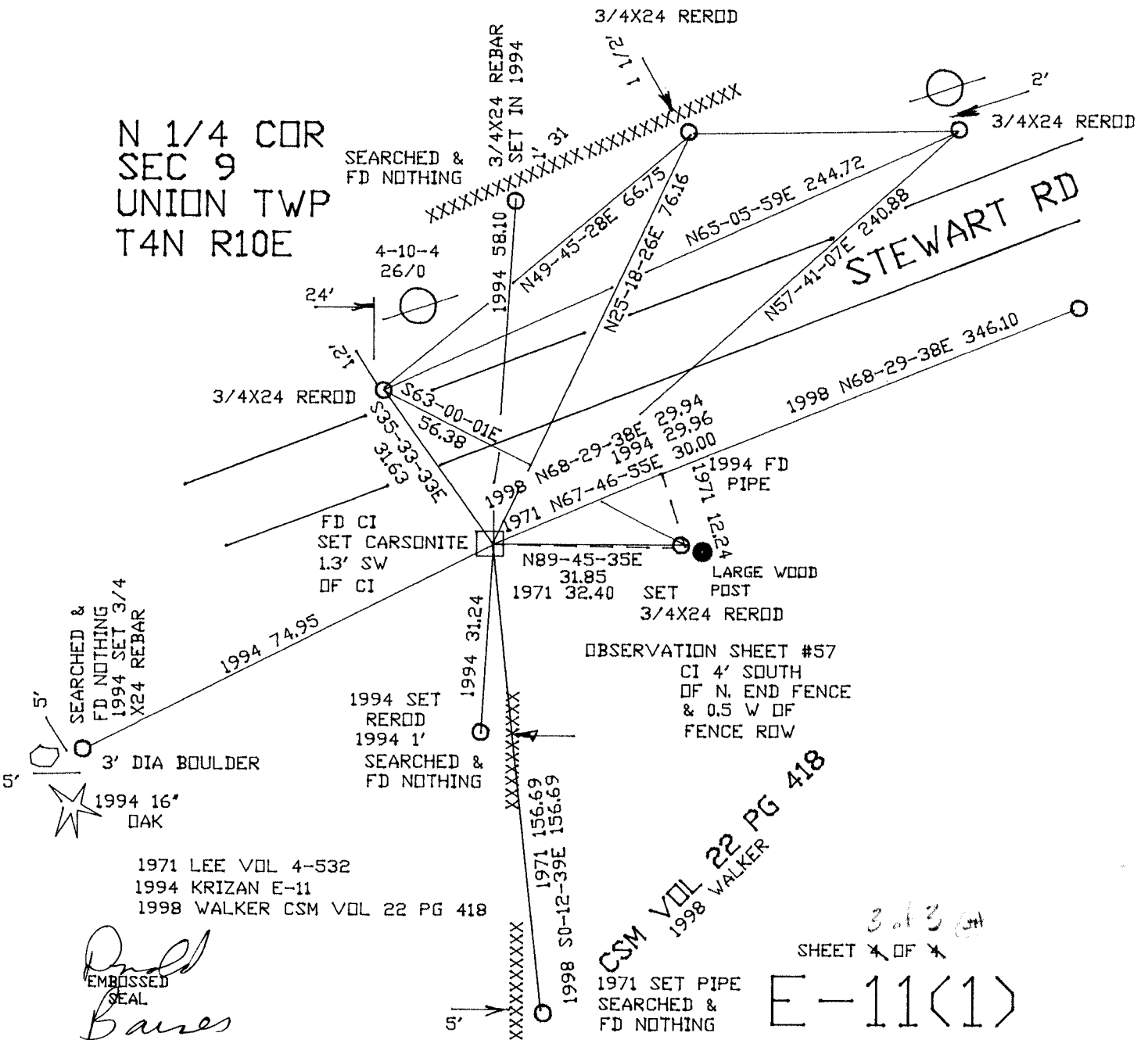
SHEET 2 OF 3

CORNER CODE E-11(1)

A.E. 7.08 REQUIREMENT

OCT 25, 2011

N 1/4 COR
 SEC 9
 UNION TWP
 T4N R10E



CSM VOL 22 PG 418
 1998 WALKER

3 of 3
 SHEET * OF *

E-11(1)

Paul Barnes
 EMBOSSED SEAL
 OCT 24, 2011