

U.S. PUBLIC LAND SURVEY MONUMENT RECORD

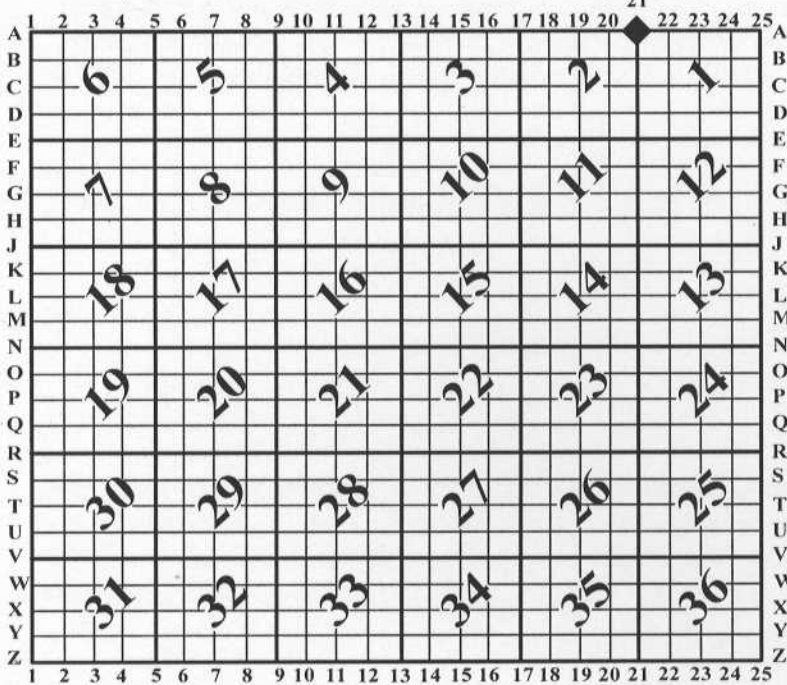
For Public Land Survey Corners In:

WI ADMINISTRATIVE CODE A-E 7.08 REQUIREMENT

T. 1 N. - R. 10 E. of the 4th P.M.

CORNER CODE INDEX

(PLACE "◆" SYMBOL AT PROPER PLSS CORNER LOCATION)



AVON TWP
ROCK COUNTY WI

COORDINATES

(GNSS DERIVED VIA WISCORS)

NORTHING: 233692.65 ELEV: N/A

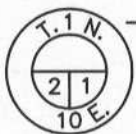
EASTING: 427366.16

Hor. Datum: WCCS-ROCK, (NA2011)

Vertical Datum: NAVD 88, (if applicable)

(a) LEGEND

- - 3/4" x 24" REBAR SET W/RED CAP
- ⊙ - IRON PIPE FOUND
- (#) - PREVIOUS TIE-SHEET DIMENSION



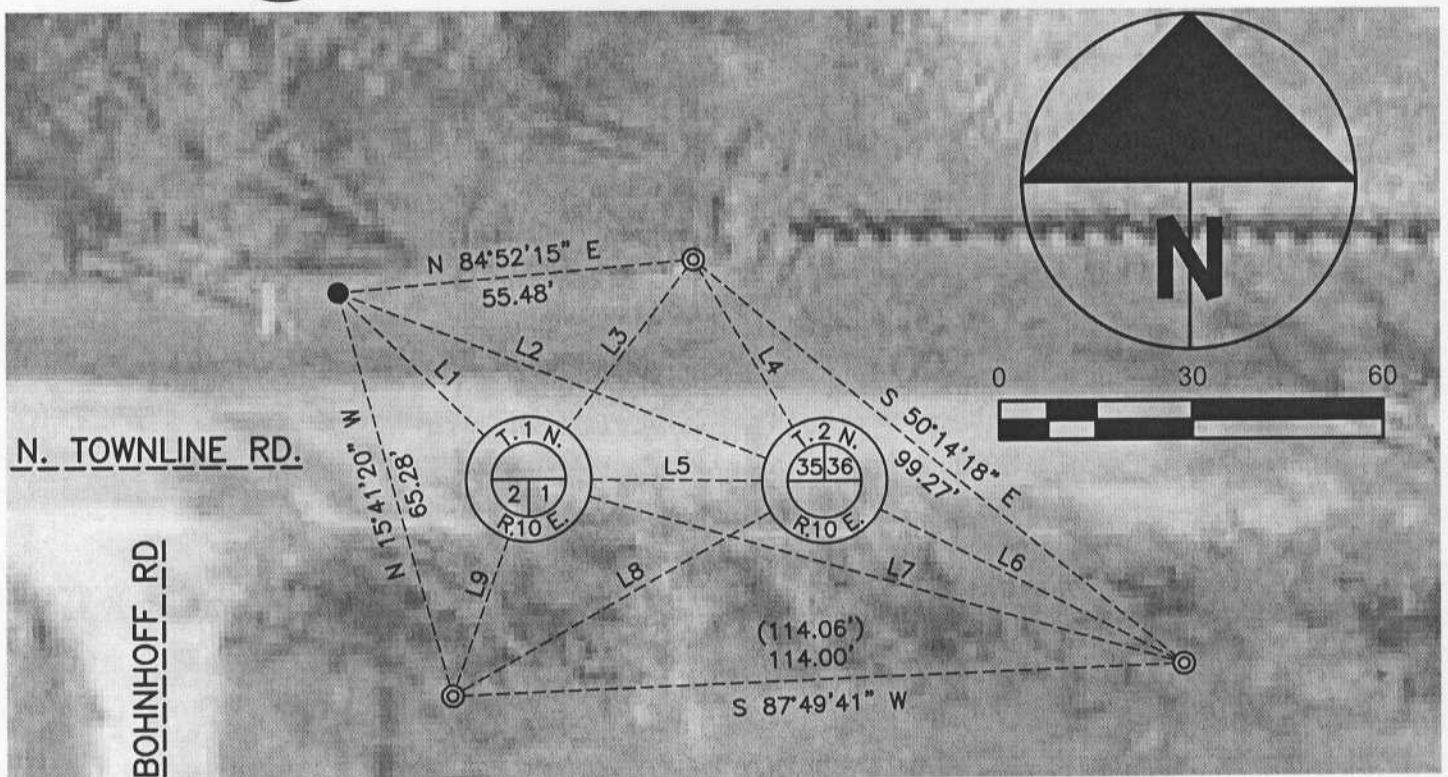
CAST IRON MONUMENT FOUND



ALUMINUM MONUMENT FOUND
(Beginning to corrode)

LINE TABLE

LINE	BEARING	DISTANCE	PREVIOUS
L1	S 45°30'08" E	41.44'	
L2	S 68°42'04" E	81.35'	
L3	N 37°04'42" E	42.63'	(42.70')
L4	N 30°44'52" W	40.15'	(40.21')
L5	S 89°22'52" E	46.22'	(46.22')
L6	S 62°32'36" E	62.86'	(62.90')
L7	S 73°52'45" E	106.18'	(106.13')
L8	S 60°11'35" W	67.00'	(66.96')
L9	S 19°24'21" W	35.84'	(35.78')



B) Describe any record evidence, monument evidence, occupational evidence, testimonial evidence or any other material evidence you considered, and whether the monument was found or placed.

I found the cast iron monument and three witnesses per the 1987 A-21 monument record, (Barnes). Additionally, I found the aluminum monument, (beginning to corrode), at the SE corner of 35-2-10; I accepted all as found as they check within expected tolerances. One additional witness was set per the sketch.

The PLSS monuments, (Avon & Spring Valley), are situated 56 & 102 feet, +/-, east of the centerline of Bohnhoff Road. The South ¼ and SE 1/16 corners of 35-2-10 could result in a defensible solution moving the corners 22', +/-, west and within proximity of trees/fences to the south. Given the passage of time, acceptance of these locations since the 1957, (V. 3, Pg. 523 – RHB), lack of an original corner, (Barnes dug in '76 & '81), I accept the monuments as found.

C) Was the corner restored through acceptance of (1) an obliterated evidence location, or, (2) a found perpetuated location?

Found perpetuated location.

D) Describe any material discrepancy between the location of the corner as restored or reestablished and the location of that corner as previously restored or reestablished by distance and direction. Show the discrepancy on the plan view drawing under (a), above. Show the distances between the corner as previously restored or reestablished and (1) the corner as restored or reestablished, and (2) to at least 4 of the witness monuments shown on the drawing in (a), above.

I did not find a discrepancy between the corner restored and a previously documented corner location. Discrepancy being defined as *disagreeing* with a corner location, *not* as noting dimensional differences between current/former tie sheets due to measuring methods. The current and *most recent* tie-sheet dimensions filed for the corner are noted.

(E) Was the corner reestablished through lost corner proportionate methods? If so, show the method, including the directions and distances to other public land survey corners used as evidence or used for proportioning the corner location.

N/A

I, **Jason R. Houle**, hereby certify that the corner location as identified by the corner code index was determined by me under my direction and control and that this U.S. Public Land Survey Monument Record is correct and complete to the best of my knowledge and belief.

CORNER CODE: A-21
(A.E. 7.08 REQUIREMENT)

