

U.S. PUBLIC LAND SURVEY MONUMENT RECORD

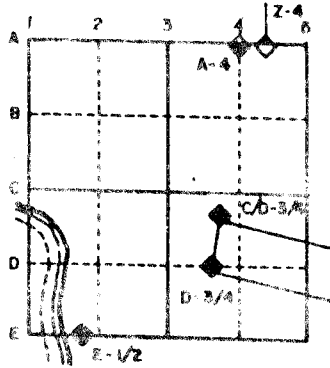
For Public Land Survey Corners in the
T. 2 N., R. 12 E.

CORNER CODE INDEX

	1	2	3	4	5	6	7	8	9	10	11	12	13	14	15	16	17	18	19	20	21	22	23	24	25
A																									
B																									
C		6																							
D					5																				
E																									
F																									
G																									
H																									
I																									
J																									
K																									
L																									
M																									
N																									
O																									
P																									
Q																									
R																									
S																									
T																									
U																									
V																									
W																									
X																									
Y																									
Z																									

PLACE MONUMENT SYMBOL (◆) AT PROPER LOCATION ON ABOVE INDEX

EXAMPLE



Rock TWP
ROCK COUNTY WI

IF AVAILABLE STATE PLANE COORDINATES

North (Y) _____ Eleve. (Z) _____
 East (X) _____ Zone _____
 Hor. Datum _____ Vert. Datum _____

(a.)

◆ CORNER MONUMENT

○ WITNESS MONUMENT

BEARINGS ARE BASED ON:

FIELD BOOK _____ PAGE # _____

SHOW A PLAN VIEW DRAWING DEPICTING THE CORNER MONUMENT AND SURROUNDING PHYSICAL FEATURES, INCLUDING THE EXCAVATION AREA AND DEPTH. THE CORNER MONUMENT SHALL HAVE THE FOLLOWING CHARACTERISTICS: 1) HAVE AT LEAST TWO PREDETERMINED BREAK-OFF POINTS. 2) IF BROKEN, LEAVE A PERMANENTLY MAGNETIZED REMNANT AT THE ORIGINAL POINT. 3) MUST BE EXTENDABLE. 4) THE CAP IS INSCRIBED: ROCK COUNTY SURVEY MONUMENT - PENALTY FOR DISTURBING MARKER. 5) OR AN EXISTING CUT LIMESTONE. AN IRON PIPE 1 1/2" x 4'0" (MINIMUM) MAY BE USED IN AREAS WHERE GROUND WATER IS WITHIN ONE FOOT OF THE SURFACE. IF THE CORNER IS OCCUPIED BY AN IMPROVEMENT (MANHOLE, BURIED CABLE, ETC.) ANY DURABLE, DISTINCT MONUMENT MAY BE USED. CORNERS SHALL BE REFERENCED WITH AT LEAST 4 DURABLE WITNESS MONUMENTS. WITNESS MONUMENTS SHALL BE MADE OF CONCRETE, NATURAL STONE, IRON OR OTHER EQUALLY DURABLE MATERIAL, EXCEPT WOOD. DESCRIBE THE CORNER AND THE WITNESS MONUMENTS.

CORNER CODE:

A 3 (◆3)

MICROFILMED

(B) Describe any record evidence, monument evidence, occupational evidence, testimonial evidence, or other material evidence considered, and whether the monument was found or placed.

- 1833 HARRISON ORIGINAL GOVERNMENT SURVEYOR. S 1/4 CORNER OF SECTION 31 JANESVILLE TOWNSHIP. SET QUARTER SECTION POST. BUR OAK 8 N89E 110.22', BUR OAK 10 N12 1/2W 182.82'. SHOWS 2600.4' TO THE NW CORNER OF SECTION 6 AND 2640 TO THE SE CORNER OF SECTION 31 JANESVILLE TOWNSHIP.
- 1854 Mc VEAN VOL 1 PG 23. SHOWS 2698.74 TO CENTER OF SECTION 6 AND 5315.31' TO SOUTH QUARTER CORNER OF SECTION 6.
- 1866 LOCKE FOUND CORNER AS SET BY RUGER AND EAST B.T. RESET STAKE (STAKE SURROUNDED 3 HH) SHOWS 2692.31' TO CENTER OF SECTION 6 AND 53540.06 TO SOUTH QUARTER CORNER OF SECTION 6.
- 1870 RUGER VOL 2 PG 43 SET LIMESTONE 20X11X9 14.36 EAST OF SOUTH QUARTER CORNER OF SECTION 31 JANESVILLE TOWNSHIP. AT SOUTH QUARTER CORNER OF SECTION 31 FOUND CORNER ESTABLISHED BY SELF. SHOWS FROM THE NORTH QUARTER CORNER OF SECTION 6 2629.04 (VAR 6-42) TO THE NW CORNER OF SECTION 6 AND 2652.13(VAR 6-45) TO THE NE CORNER OF SECTION 6.
- 1933 SUNNY VOL 3 PG 234 SET 1"X36" PIPE IN CONCRETE PAVEMENT 3.8' NORTH OF CENTER OF PAVEMENT. CORNER IS 14.35' EAST OF SOUTH QUARTER CORNER OF SECTION 31 JANESVILLE TOWNSHIP. SHOWS 2629.45 TO NW CORNER OF SECTION 6.
- 1970 BATTERMAN JR. VOL 4 PG 432 FOUND 1" PIPE AT NORTH QUARTER CORNER OF SECTION 6. PIN AT SOUTH QUARTER CORNER OF SECTION 31 WHICH IS 14.35' WEST OF NORTH QUARTER CORNER. REFERENCED SAME. SHOWS WPL COORDINATES OF N/S 246,152.39;E/W 2,236,554.33.
- 1970 D.O.T. Z-3 FOUND 3/4" IRON PIN 3.8' NORTH OF CENTER LINE OF PAVEMENT AND EAST OF SOUTH QUARTER CORNER OF SECTION 31.
- 1987 BARNES Z-3(1) FOUND ALL REFERENCE PIPES AS SHOWN IN VOLUME 4 PG 432. FOUND PIPES.
- 1987 DOT PLACED PK AT THE S 1/4 CORNER OF SECTION 31 JANESVILLE TOWNSHIP.
- 1991 BARNES Z-3(1) DUG AND FOUND 1" PIPES AT THE S 1/4 CORNER OF SECTION 31 AND THE N 1/4 CORNER OF SECTION 6 AT A DEPTH OF 0.6'. MEASURED TO REFERENCE PIPES.

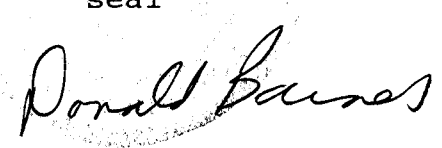
DOT DID NOT PLACE A DISK.

C) Was the corner restored through acceptance of (1) an obliterated evidence location, or, (2) a found perpetuated location?

D) Describe any material discrepancy between the location of the corner as restored or reestablished and the location of that corner as previously restored or reestablished by distance and direction. Show the discrepancy on the plan view drawing under (a), above. Show the distances between the corner as previously restored or reestablished and (1) the corner as restored or reestablished, and (2) to at least 4 of the witness monuments shown on the drawing in (a), above.
A3(1) CALLS FOR DISCREPANCY BETWEEN THE PK AND FOUND PIPE WHICH WAS ACCEPTED AS THE CORNER.

I, Donald Barnes, hereby certify that the corner points as identified by the corner code index were, in a field survey on, November 9, 1992, established, re-established, monumented, re-monumented, recovered or restored as expressed below and in conformance with the regulations and rules as required in the current manual of survey instructions of the United States Department of Interior, Bureau of Land Management.

seal



COUNTY SURVEYOR FILING DATA

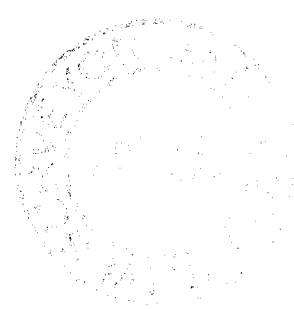
Date of computer entry _____

Date microfilmed _____

Number of included sheets _____

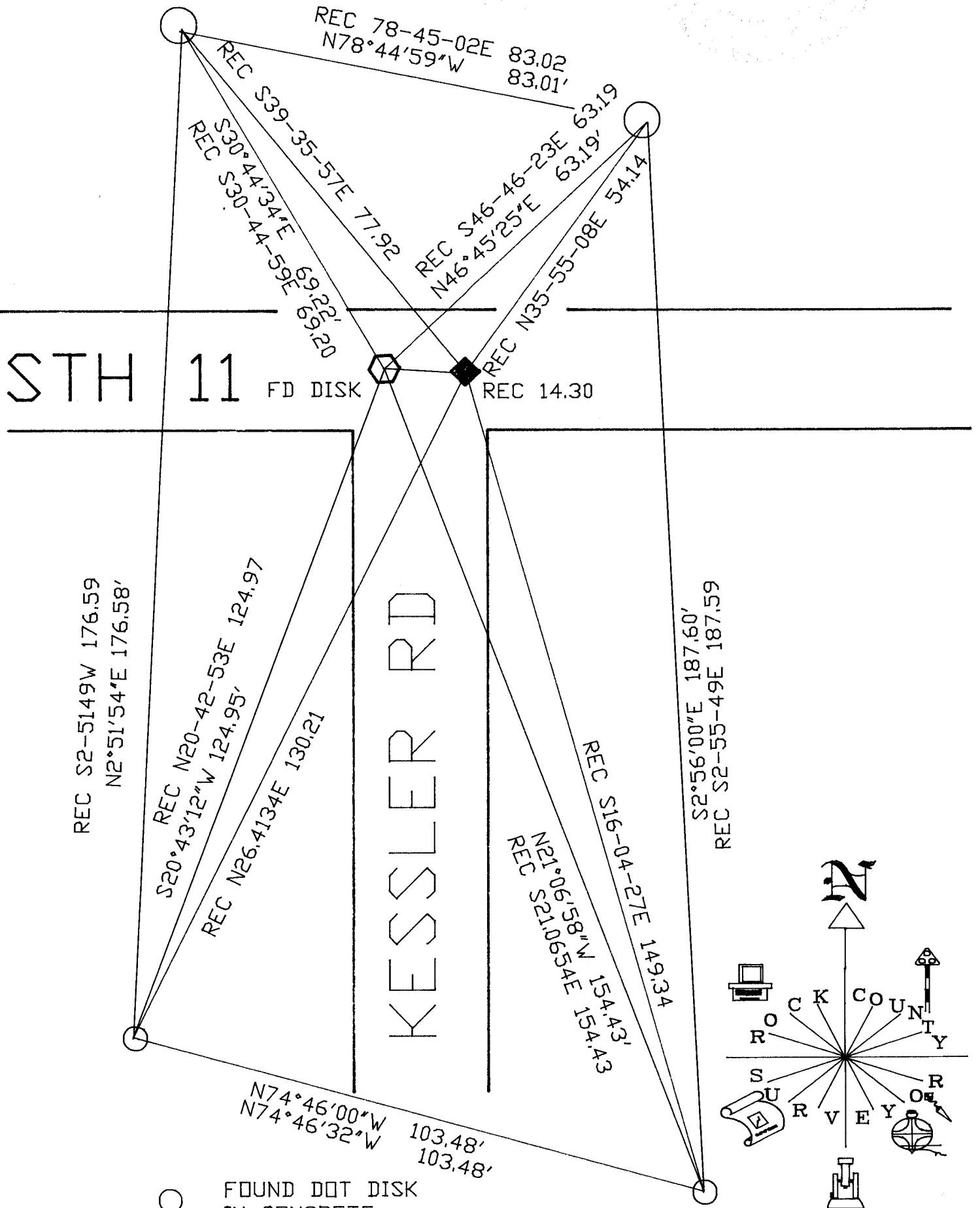
CORNER CODE

AFFIX YOUR LAND SURVEYOR SEAL



Donald Barnes

November 30, 1992



- FOUND DOT DISK
IN CONCRETE
- ◆ N 1/4 COR SEC 6
- ⬡ S 1/4 COR SEC 31
FD DISK
- OBSERVATION SHEETS