

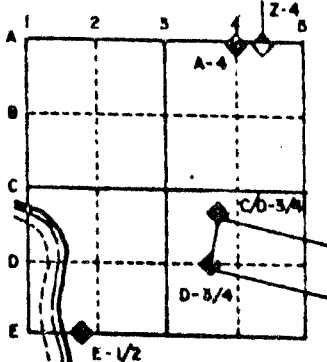
U.S. PUBLIC LAND SURVEY MONUMENT RECORD

For Public Land Survey Corners in the
T. 2 N., R. 12 E.

CORNER CODE INDEX

	1	2	3	4	5	6	7	8	9	10	11	12	13	14	15	16	17	18	19	20	21	22	23	24	25
A																									
B																									
C	6																								
D		5																							
E			4																						
F				3																					
G					2																				
H	7																								
I		8																							
J			9																						
K				10																					
L					11																				
M						12																			
N	18																								
O		17																							
P			16																						
Q				15																					
R					14																				
S						13																			
T	19																								
U		20																							
V			21																						
W				22																					
X					23																				
Y						24																			
Z	25																								

EXAMPLE



ROCK TWP
ROCK COUNTY WI

IF AVAILABLE
STATE PLANE COORDINATES

North (Y) 240,850.38 Eleve. (Z) _____

East (X) 2,249,936.31 Zone _____

Hor. Datum _____ Vert. Datum _____

PLACE MONUMENT SYMBOL (◆) AT PROPER LOCATION ON ABOVE INDEX
HURD 240,850.76
2,249,936.53

◆ CORNER MONUMENT

○ WITNESS MONUMENT

BEARINGS ARE BASED ON: ASSUMED

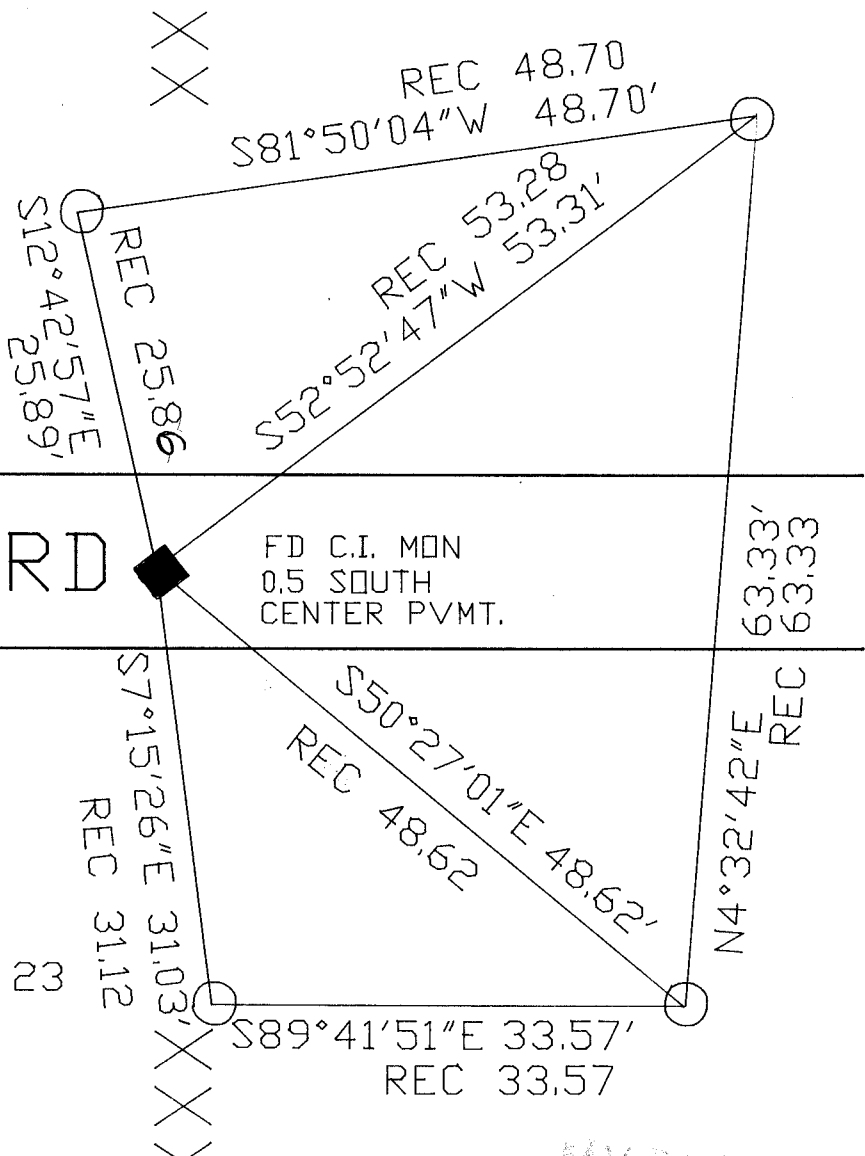


ANDOVER RD

FD C.I. MON
0.5 SOUTH
CENTER PVMT.

○ FOUND PIPE

FIELD BOOK #3 PG 23



SHEET ___ OF ___

CORNER CODE: E 13 (1)

(B) Describe any record evidence, monument evidence, occupational evidence, testimonial evidence or any other material evidence you considered, and whether the monument was found or placed.

- 1834 HARRISON ORIGINAL GOVERNMENT SURVEYOR. NORTH BETWEEN SECTIONS 9 & 10. CORNER TO SECTIONS 3,4,9,20 BURR OAK 12 S75E 184.14' AND BURR OAK 12 N67E 274.56'. MEASURED 2637.69 TO NORTH QUARTER CORNER OF SECTION 9,2640 TO NORTH QUARTER CORNER OF SECTION 10 EAST QUARTER CORNERS OF SECTIONS 9 AND 4 AND SOUTH QUARTER CORNER OF SECTION 3..
- 1863 LOCKE VOL 1 PG 189 FOUND N.B. TREE AND STUMP OF S.B.T. SET HH 20X12X6. SHOWS 2640 TO NORTH QUARTER OF SECTION 10 AND 2636.04 TO WEST QUARTER CORNER OF SECTION 10.
- 1866 LOCKE VOL 1 PG 267 FOUND CORNER SET BY SELF. SEE SECTION 10. SHOWS 2641.32 TO SOUTH QUARTER CORNER OF SECTION 3.
- 1970 BATTERMAN JR. VOL 4 PG 329 SET CAST IRON MONUMENT 10/3/72. PLACED TIES. DUG AND FOUND STONE AS DESCRIBED IN RECORDS. ALSO FOUND STONE OF RECORD AT THE S 1/16TH CORNER OF SW 1/4 OF SECTION 3.
- 19?? HURD VOL 5 PG 517 COORDINATES OF 240,850.76;2,249,936.53
- 1986 BARNES VOL 6 PG 363 FOUND CAST IRON MONUMENT. SHOWS N89-27-29E 2656.31 TO N 1/4 CORNER OF SECTION 9 AND S1-24-40E 2640.89 TO E 1/4 CORNER OF SECTION 9. SHOWS N1-24-35E 2640.83 BY USING HURD'S COORDINATES.
- 1987 BARNES FOUND ALL 4 REFERENCE PIPES AND CAST IRON MONUMENT. ADDED 1" RISER.
FOUND CAST IRON MONUMENT.

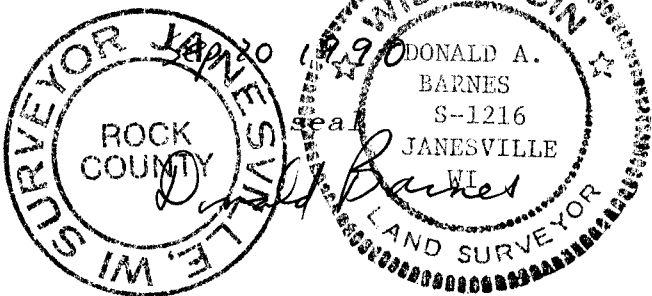
C) Was the corner restored through acceptance of (1) an obliterated evidence location, or, (2) a found perpetuated location?

ACCEPTED FOUND MONUMENT.

D) Describe any material discrepancy between the location of the corner as restored or reestablished and the location of that corner as previously restored or reestablished by distance and direction. Show the discrepancy on the plan view drawing under (a), above. Show the distances between the corner as previously restored or reestablished and (1) the corner as restored or reestablished, and (2) to at least 4 of the witness monuments shown on the drawing in (a), above.

(E) Was the corner reestablished through lost corner proportionate methods? If so, show the method, including the directions and distances to other public land survey corners used as evidence or used for proportioning the corner location.

I, Donald Barnes, hereby certify that the corner points as identified by the corner code index were, in a field survey on, July 19,1990, established, re-established, monumented, re-monumented, recovered or restored as expressed below and in conformance with the regulations and rules as required in the current manual of survey instructions of the United States Department of Interior, Bureau of Land Management.



AFFIX YOUR LAND SURVEYOR SEAL

COUNTY SURVEYOR FILING DATA

Date of computer entry _____

Date microfilmed _____

Number of included sheets _____

CORNER CODE

E13 (1)