

U.S. PUBLIC LAND SURVEY MONUMENT RECORD

For Public Land Survey Corners in:
T. 2N., R. 12E

WI ADMINISTRATIVE CODE A-E 7.08 REQUIREMENT

CORNER CODE INDEX

A	1	2	3	4	5	6	7	8	9	10	11	12	13	14	15	16	17	18	19	20	21	22	23	24	25
B																									
C	6																								
D																									
E																									
F	7																								
G																									
H																									
J																									
K																									
L	18																								
M																									
N																									
O																									
P	19																								
Q																									
R		20																							
S																									
T	30																								
U																									
V		29																							
W																									
X	31																								
Y		32																							
Z																									

Rock TWP

ROCK COUNTY WI

IF AVAILABLE
ROCK COUNTY COORDINATES PREFERRED

North _____ Elev. _____

East _____

Hor. Datum _____ Vert. Datum _____

LATITUDE _____ ELLIPS. HT. _____

LONGITUDE _____

GPS (X) _____ TRAVERSE (X) _____

BASED ON THE FOLLOWING CONTROL:

PLACE MONUMENT SYMBOL AT PROPER LOCATION ON ABOVE INDEX

CORNER MONUMENT

WITNESS MONUMENT

(a)

BEARINGS ARE BASED ON: _____

FIELD BOOK _____ PAGE # _____

SHEET 1 OF 2

SHOW A PLAN VIEW DRAWING DEPICTING THE CORNER MONUMENT AND SURROUNDING PHYSICAL FEATURES, INCLUDING THE EXCAVATION AREA AND DEPTH.

PLANNING & ZONING COMMITTEE ADOPTED THE ABOVE FORM ON 12/2/1982

CORNER CODE L-13(1)

(B) Describe any record evidence, monument evidence, occupational evidence, testimonial evidence or any other material evidence you considered, and whether the monument was found or placed.

1853 Mc VEAN VOL 1 PG 16. STATES NOTHING ABOUT THE CORNER. SHOWS A DISTANCE OF 2605.68' TO THE W 1/4 CORNER OF SECTION 16 AND 2616.90 TO THE SE CORNER OF SECTION 16.
1958 BATTERMAN VOL 3 PG 563 JR. 3/4" PIN AT CORNER. REFERENCED SAME.
19?? HURD VOL 5 PG 517 N/S 232,936.04 E/W 2,250,137.52
1990 BARNES L-13 FOUND PK AND OLD REFERENCE TIES & REPLACED PK WITH ALUMINUM MONUMENT.

FOUND ALUM. MONUMENT. MONUMENT WILL BE DISTURBED BY ROAD CONSTRUCTION.

C) Was the corner restored through acceptance of (1) an obliterated evidence location, or, (2) a found perpetuated location?
ACCEPTED FOUND MONUMENT.

D) Describe any material discrepancy between the location of the corner as restored or reestablished and the location of that corner as previously restored or reestablished by distance and direction. Show the discrepancy on the plan view drawing under (a), above. Show the distances between the corner as previously restored or reestablished and (1) the corner as restored or reestablished, and (2) to at least 4 of the witness monuments shown on the drawing in (a), above.

(E) Was the corner reestablished through lost corner proportionate methods? If so, show the method, including the directions and distances to other public land survey corners used as evidence or used for proportioning the corner location.

I, Donald Barnes, hereby certify that the corner points as identified by the corner code index were, in a field survey on, MARCH 25, 1998, established, re-established, monumented, re-monumented, recovered or restored as expressed below and in conformance with the regulations and rules as required in the current manual of survey instructions of the United States Department of Interior, Bureau of Land Management.

COUNTY SURVEYOR FILING DATA

seal

Date of computer entry _____

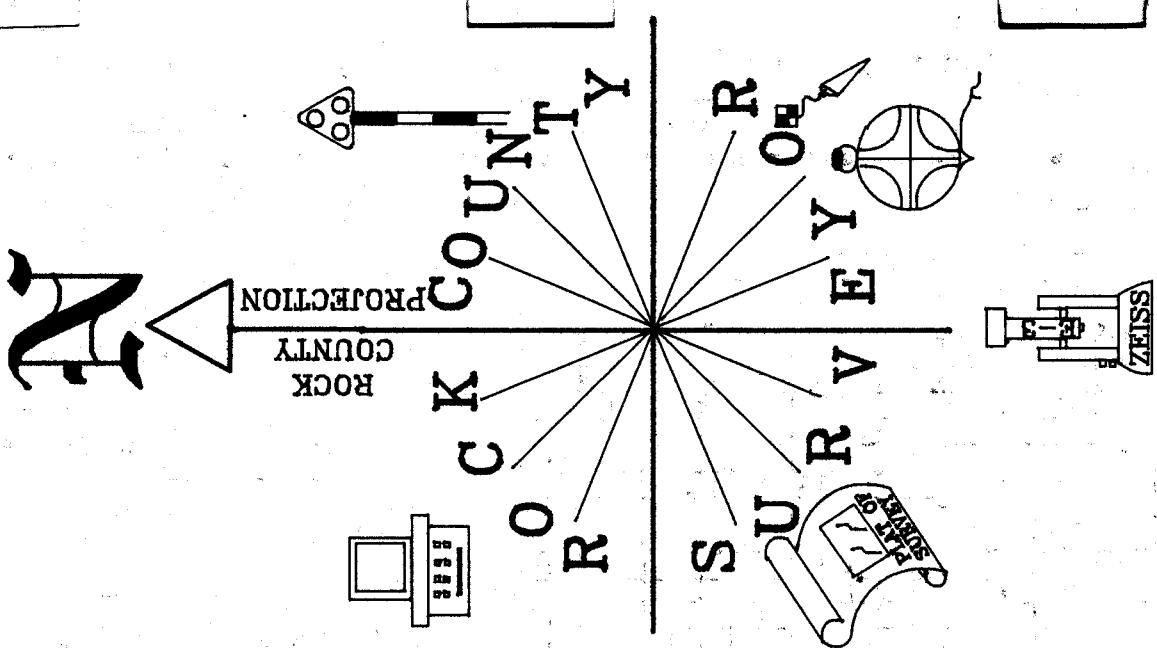
Date microfilmed _____

Number of included sheets _____
CORNER CODE

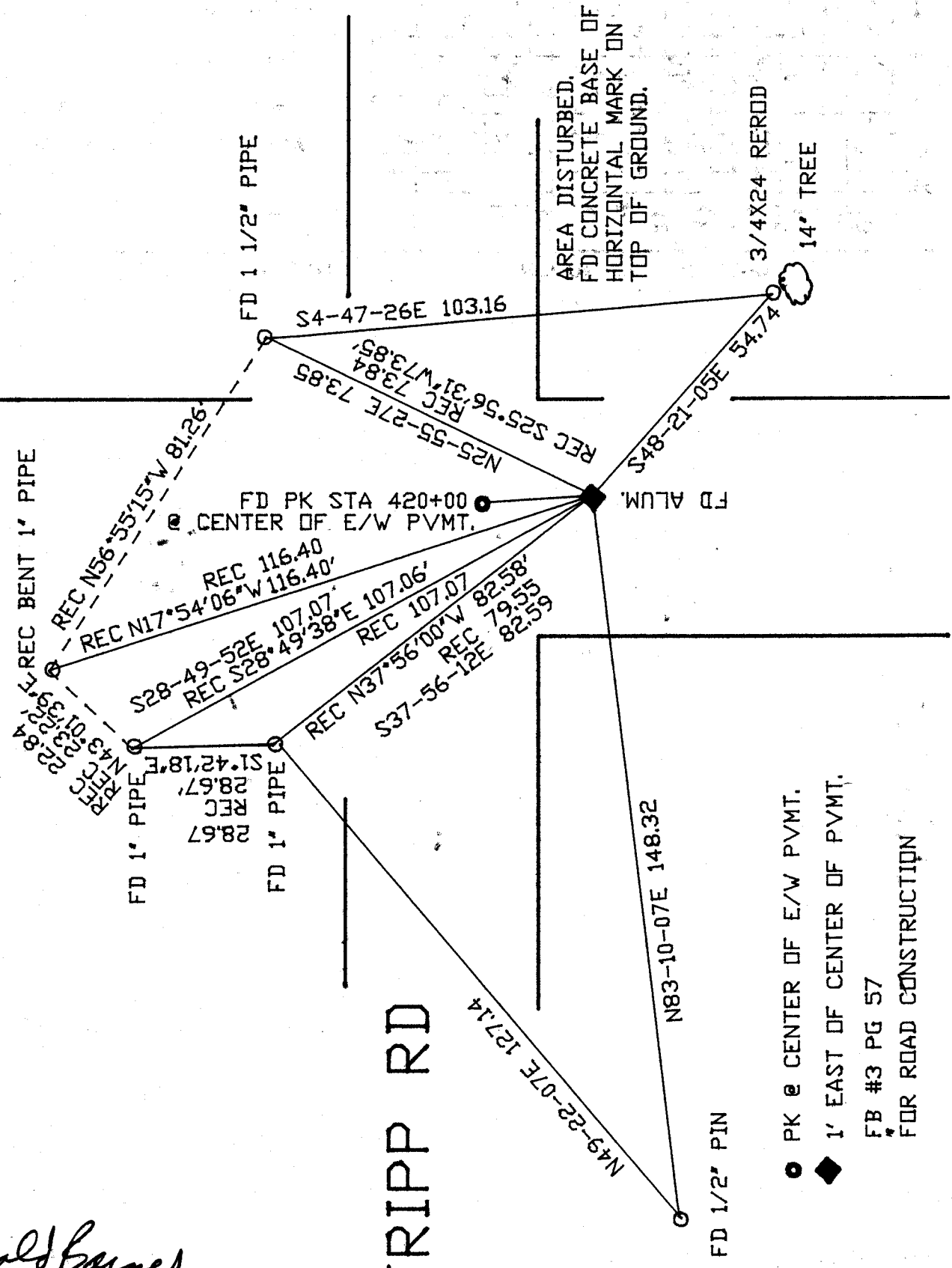
AFFIX YOUR LAND SURVEYOR SEAL

Donald Barnes
March 27, 1998

L-13(1)



C.T.H.
D



- PK @ CENTER OF E/W PVMT.
- ◆ 1' EAST OF CENTER OF PVMT.
- FB #3 PG 57
- FOR ROAD CONSTRUCTION

Donald Barnes
EMBOSSSED SEAL
March 27, 1998

TRIPP RD

L-13(1)