

# U.S. PUBLIC LAND SURVEY MONUMENT RECORD

For Public Land Survey Corners in:

WI ADMINISTRATIVE CODE A-E 7.08 REQUIREMENT

T. 2N., R. 12E

### CORNER CODE INDEX

A	1	2	3	4	5	6	7	8	9	10	11	12	13	14	15	16	17	18	19	20	21	22	23	24	25
B																									
C	6																								
D																									
E																									
F																									
G	1																								
H																									
I																									
J																									
K	18																								
L																									
M																									
N																									
O																									
P	19																								
Q																									
R																									
S																									
T	30																								
U																									
V																									
W																									
X	31																								
Y																									
Z																									

Rock TWP  
ROCK COUNTY WI

IF AVAILABLE  
ROCK COUNTY COORDINATES PREFERRED

North \_\_\_\_\_ Elev. \_\_\_\_\_

East \_\_\_\_\_

Hor. Datum \_\_\_\_\_ Vert. Datum \_\_\_\_\_

LATITUDE \_\_\_\_\_ ELLIPS. HT. \_\_\_\_\_

LONGITUDE \_\_\_\_\_

GPS (X) \_\_\_\_\_ TRAVERSE (X) \_\_\_\_\_

BASED ON THE FOLLOWING CONTROL:

PLACE MONUMENT SYMBOL  AT PROPER LOCATION ON ABOVE INDEX

CORNER MONUMENT

WITNESS MONUMENT

(a)

BEARINGS ARE BASED ON:

FIELD BOOK \_\_\_\_\_ PAGE # \_\_\_\_\_

SHEET 1 OF 3

SHOW A PLAN VIEW DRAWING DEPICTING THE CORNER MONUMENT AND SURROUNDING PHYSICAL FEATURES, INCLUDING THE EXCAVATION AREA AND DEPTH.

PLANNING & ZONING COMMITTEE ADOPTED THE ABOVE FORM ON 12/2/1982

CORNER CODE L-19(1)

RO1558

(B) Describe any record evidence, monument evidence, occupational evidence, testimonial evidence or any other material evidence you considered, and whether the monument was found or placed.

- 1867 LOCKE VOL 1 PG 289 & MAP #4010 SET STAKE THE CORNER OF CHAS NOYES FENCE IS N75W 28. 2650.56' TO W 1/4 COR SEC 14. ESTABLISHED BY INTERSECTING 1/4 LINES.
- 1880 LEE VOL 2 PG 314 & MAP #4011 FOUND COR. SET BY LOCKE. 2653.86' TO S 1/4 COR SEC 14.
- 1939 SUNNY VOL 3 PG 412 INTERSECTED THE N & S 1/4 LINE WITH THE E & W 1/4 LINE AND SET IRON PIPE MON. FOR CORNER. 2652.7 TO W 1/4 COR SEC 14 & 2652.1 TO S 1/4 COR SEC 14.
- 1954 BATTERMAN MAP #3982 FOUND PIPE. CALLS FOR AN ANGLE OF 179-52-06 AT THE PIPE FROM THE E 1/4 TO THE W 1/4 CORNERS OF SEC 14.
- 1958 BATTERMAN CSM VOL 1 PG 55 FD PIPE. EAST 33.00 TO CONCRETE MONUMENT 4"X4" TOP 8"X8" BASE 42" LONG. ANGLE OF 89-23-40 FROM E 1/4 TO S 1/4 CORNERS OF SEC 14.
- 1964 LEE FOUND PIPE
- 1965 BATTERMAN JR. VOL 1 PG 289 FD STAKE 2' DEEP IT IS 0.58' WEST OF STRAIGHT LINE BETWEEN N & S 1/4 CORNERS & 2.5' NORTH OF STRAIGHT LINE BETWEEN E & W 1/4 CORNERS.
- 1965 BATTERMAN JR. FOUND REMAINS OF WOOD STAKE. CALLS FOR 2653.1 TO W 1/4 COR SEC 14, EAST 36.20 TO A MONUMENT. PLACED R/R SPIKES EASTERLY AND NORTHERLY 6.00 OF THE STAKE. CALLS FOR A FOUND PIPE 3.17 EAST AND 0.65 NORTH.
- 1976 KNOERR CSM VOL 6 PG 55 FD 2" PIPE. EAST 33.00 TO PROPERTY PIN.
- 1980 COMBS MAP #4022 FOUND IRON PIPE.
- 1982 COMBS VOL 11 PG 17 CENTER AS RECORDED IN VOL 4 PG 264 OF ROCK COUNTY SURVEYORS' RECORDS. 2661.23' TO E 1/4 COR SEC 14 & ANGLE OF 89-22 FROM N 1/4 TO E 1/4 CORNERS OF SEC 14.
- 1983 COMBS CSM VOL 11 PG 191 & 200 FOUND PIPE.
- 1987 COMBS CSM VOL 12 PG 594 FD PIPE.
- 1988 COMBS CSM VOL 13 PG 263 FD NAIL.
- 1989 COMBS MAP #12269 DOES NOT CALL FOR TYPE OF MONUMENT AT THE CENTER.
- 1989 COMBS CSM VOL 14 PG 113 FD NAIL. 2653.10 TO W 1/4 COR SEC 14. ANGLE OF 89-27-00 FROM E 1/4 TO S 1/4 CORNERS OF SEC 14.
- 1992 COMBS MAP #11151 FOUND IRON SPIKE.
- 1992 COMBS MAP #1150 FOUND IRON SPIKE CALLS FOR 2661.25 TO E 1/4 COR SEC 14
- 1992 COMBS MAP #11149 FOUND IRON SPIKE.
- 1993 COMBS CSM VOL 17 PG 43 IRON STAKE. 2653.06 TO N 1/4 COR SEC 14.

Sheet 1 of 3

Donald Barnes  
8-12-2002

L-19(1)

RO1558

**1996 BARNES L-19 FOUND LARGE NAIL IN HARMONY WITH FOUND R/R SPIKES AS SHOW IN DRAWING. THE NAIL IS ACCEPTED AND PERPETUATES THE CENTER OF SECTION AS ESTABLISHED BY LOCKE AND FOUND BY BATTERMAN IN 1965.**

**THE MONUMENTS AND SEVERAL OF THE RECORD REFERENCE MONUMENTS WERE DESTROYED BY THE SEWER PROJECT. ACCEPTED FOUND 3 REFERENCE PIPES. DID NOT PLACE A MONUMENT BECAUSE THE AREA WILL BE DISTURBED BY THE NEW BYPASS PROJECT.**

*C) Was the corner restored through acceptance of (1) an obliterated evidence location, or, (2) a found perpetuated location?*

**THE RECORD FD 1/2" PIN BEST FITS THE INTERSECTION OF THE 1/4 LINES BUT I ACCEPTED THE PERPETUATED POSITION OF THE WOOD STAKE. THIS IS WITHIN THE LEGAL ERROR STANDARDS OF 1867. THE 1867 INTENT WAS THE INTERSECTION OF THE 1/4 LINES.**

*D) Describe any material discrepancy between the location of the corner as restored or reestablished and the location of that corner as previously restored or reestablished by distance and direction. Show the discrepancy on the plan view drawing under (a), above. Show the distances between the corner as previously restored or reestablished and (1) the corner as restored or reestablished, and (2) to at least 4 of the witness monuments shown on the drawing in (a), above.*

**THERE ARE THREE MONUMENTS IN DISPUTE; 1) THE LARGE NAIL 2) THE FOUND PIN & 3) THE PIPE AS SHOWN IN VOL 4 PG 264.**

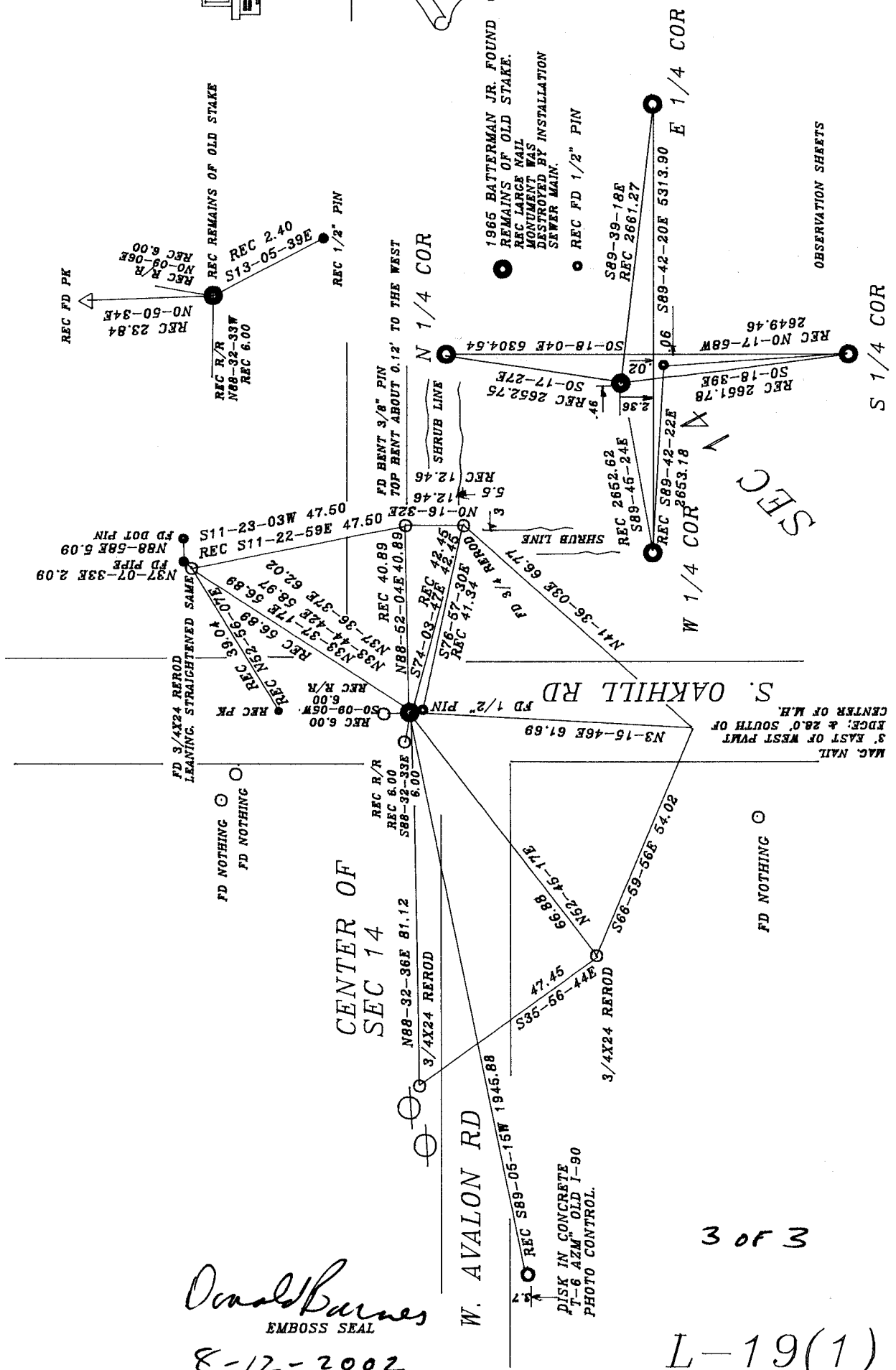
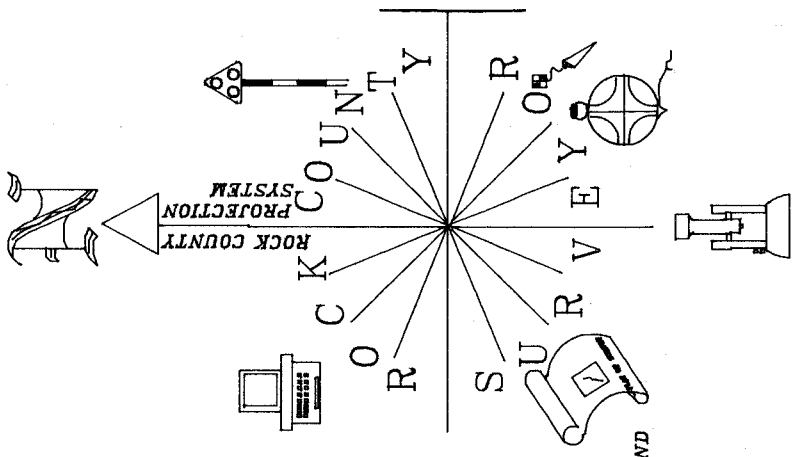
*I, Donald Barnes, hereby certify that the corner location as identified by the corner code index was determined by me under by direction and control and that this U.S. Public Land Survey Monument Record is correct and complete to the best of my knowledge and belief.*

seal

emboss  
*Donald Barnes*  
8-12-2002

Sheet 2 OF 3

CORNER CODE **L-19(1)**



*Donald Barnes*  
EMBOSS SEAL

8-12-2002

3 of 3

L-19(1)

OBSERVATION SHEETS

MAC NAIL  
3' EAST OF WEST POINT OF  
EDGE & 28.0' SOUTH OF  
CENTER OF M.H.

DISK IN CONCRETE  
"T-6 AZM" OLD I-90  
PHOTO CONTROL.

W. AVALON RD

S. OAKHILL RD

CENTER OF  
SEC 14

SEC 14

S 1/4 COR

E 1/4 COR

W 1/4 COR

N 1/4 COR