

U.S. PUBLIC LAND SURVEY MONUMENT RECORD

For Public Land Survey Corners in:

WI ADMINISTRATIVE CODE A-E 7.08 REQUIREMENT

T. 2N., R. 12E

CORNER CODE INDEX

| | | | | | | | | | | | | | | | | | | | | | | | | | |
|---|---|---|---|----|----|----|----|----|----|----|----|----|----|----|----|----|----|----|----|----|----|----|----|----|----|
| A | 1 | 2 | 3 | 4 | 5 | 6 | 7 | 8 | 9 | 10 | 11 | 12 | 13 | 14 | 15 | 16 | 17 | 18 | 19 | 20 | 21 | 22 | 23 | 24 | 25 |
| B | 6 | | | | | | | | | | | | | | | | | | | | | | | | |
| C | | 5 | | | | | | | | | | | | | | | | | | | | | | | |
| D | | | 4 | | | | | | | | | | | | | | | | | | | | | | |
| E | | | | 3 | | | | | | | | | | | | | | | | | | | | | |
| F | | | | | 2 | | | | | | | | | | | | | | | | | | | | |
| G | | | | | | 1 | | | | | | | | | | | | | | | | | | | |
| H | 7 | | | | | | | | | | | | | | | | | | | | | | | | |
| I | | 8 | | | | | | | | | | | | | | | | | | | | | | | |
| J | | | 9 | | | | | | | | | | | | | | | | | | | | | | |
| K | | | | 10 | | | | | | | | | | | | | | | | | | | | | |
| L | | | | | 11 | | | | | | | | | | | | | | | | | | | | |
| M | | | | | | 12 | | | | | | | | | | | | | | | | | | | |
| N | | | | | | | 13 | | | | | | | | | | | | | | | | | | |
| O | | | | | | | | 14 | | | | | | | | | | | | | | | | | |
| P | | | | | | | | | 15 | | | | | | | | | | | | | | | | |
| Q | | | | | | | | | | 16 | | | | | | | | | | | | | | | |
| R | | | | | | | | | | | 17 | | | | | | | | | | | | | | |
| S | | | | | | | | | | | | 18 | | | | | | | | | | | | | |
| T | | | | | | | | | | | | | 19 | | | | | | | | | | | | |
| U | | | | | | | | | | | | | | 20 | | | | | | | | | | | |
| V | | | | | | | | | | | | | | | 21 | | | | | | | | | | |
| W | | | | | | | | | | | | | | | | 22 | | | | | | | | | |
| X | | | | | | | | | | | | | | | | | 23 | | | | | | | | |
| Y | | | | | | | | | | | | | | | | | | 24 | | | | | | | |
| Z | | | | | | | | | | | | | | | | | | | 25 | | | | | | |
| | | | | | | | | | | | | | | | | | | | | 26 | | | | | |
| | | | | | | | | | | | | | | | | | | | | | 27 | | | | |
| | | | | | | | | | | | | | | | | | | | | | | 28 | | | |
| | | | | | | | | | | | | | | | | | | | | | | | 29 | | |
| | | | | | | | | | | | | | | | | | | | | | | | | 30 | |
| | | | | | | | | | | | | | | | | | | | | | | | | | 31 |
| | | | | | | | | | | | | | | | | | | | | | | | | | 32 |
| | | | | | | | | | | | | | | | | | | | | | | | | | 33 |
| | | | | | | | | | | | | | | | | | | | | | | | | | 34 |
| | | | | | | | | | | | | | | | | | | | | | | | | | 35 |
| | | | | | | | | | | | | | | | | | | | | | | | | | 36 |

PLACE MONUMENT SYMBOL AT PROPER LOCATION ON ABOVE INDEX

ROCK TWP
ROCK COUNTY WI

IF AVAILABLE
ROCK COUNTY COORDINATES PREFERRED

North _____ Elev. _____

East _____

Hor. Datum _____ Vert. Datum _____

LATITUDE _____ ELLIPS. HT. _____

LONGITUDE _____

GPS (X) _____ TRAVERSE (X) _____

BASED ON THE FOLLOWING CONTROL:

CORNER MONUMENT WITNESS MONUMENT

BEARINGS ARE BASED ON: _____

FIELD BOOK _____ PAGE # _____

SHEET 1 OF 2

SHOW A PLAN VIEW DRAWING DEPICTING THE CORNER MONUMENT AND SURROUNDING PHYSICAL FEATURES, INCLUDING THE EXCAVATION AREA AND DEPTH.

PLANNING & ZONING COMMITTEE ADOPTED THE ABOVE FORM ON 12/2/1982

CORNER CODE X-13(1)

(B) Describe any record evidence, monument evidence, occupational evidence, testimonial evidence or any other material evidence you considered, and whether the monument was found or placed.

- 1834 HARRISON ORIGINAL GOVERNMENT SURVEYOR. FIELD NOTES - QUARTER SECTION CORNER. SET POST & RAISED MOUND.
- 1855 CHURCH VOL 1 PG 30 SHOWS 2640 TO THE NE COR OF SEC 33, 2650.56 TO THE CENTER OF SEC 33, 2632.08 TO THE SE COR OF SEC 33.
- 1856 CHURCH VOL 1 PG 65 SHOWS 2630.76 TO THE CENTER OF SECTION 33
- 1858 CHURCH VOL 1 PG 80 SHOWS 2656.50 TO THE CENTER OF SECTION 34.
- 1958 BATTERMAN JR. VOL 3 PG 553 1/2" IRON PIN. REFERENCED SAME.
- 1966 BATTERMAN JR. VOL 4 PG 258 SHOWS REFERENCE TIES.
- 1989 BARNES X-13 FOUND 1/2"X24" REROD. REPLACED IT WITH A POLY. MONUMENT.

FOUND POLY. MONUMENT WITH TOP BROKE OFF. MONUMENT WILL BE DISTURBED BY ROAD CONSTRUCTION.

C) Was the corner restored through acceptance of (1) an obliterated evidence location, or, (2) a found perpetuated location?

ACCEPTED FOUND PERPETUATED LOCATION.

D) Describe any material discrepancy between the location of the corner as restored or reestablished and the location of that corner as previously restored or reestablished by distance and direction. Show the discrepancy on the plan view drawing under (a), above. Show the distances between the corner as previously restored or reestablished and (1) the corner as restored or reestablished, and (2) to at least 4 of the witness monuments shown on the drawing in (a), above.

(E) Was the corner reestablished through lost corner proportionate methods? If so, show the method, including the directions and distances to other public land survey corners used as evidence or used for proportioning the corner location.

I, Donald Barnes, hereby certify that the corner points as identified by the corner code index were, in a field survey on, MARCH 25, 1998, established, re-established, monumented, re-monumented, recovered or restored as expressed below and in conformance with the regulations and rules as required in the current manual of survey instructions of the United States Department of Interior, Bureau of Land Management.

COUNTY SURVEYOR FILING DATA

seal

Date of computer entry _____

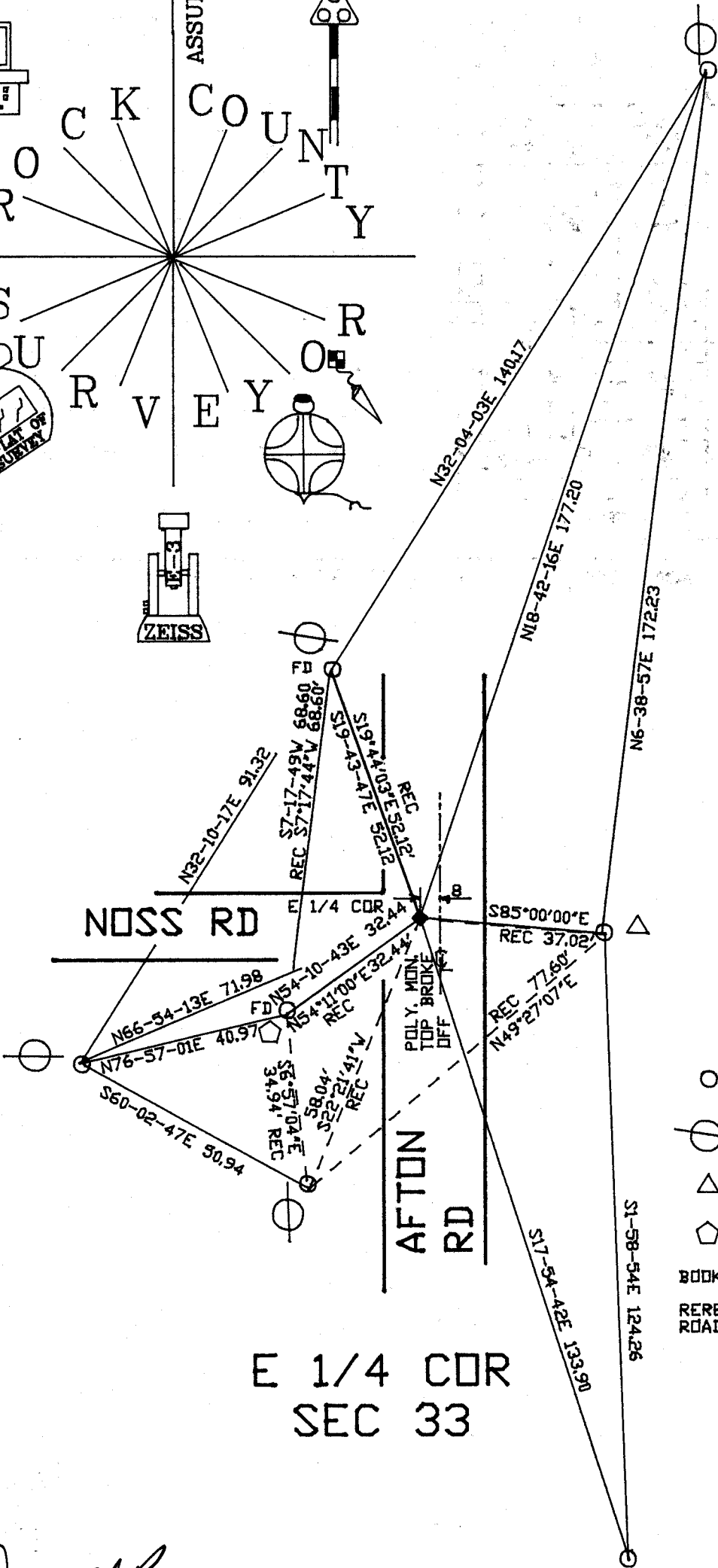
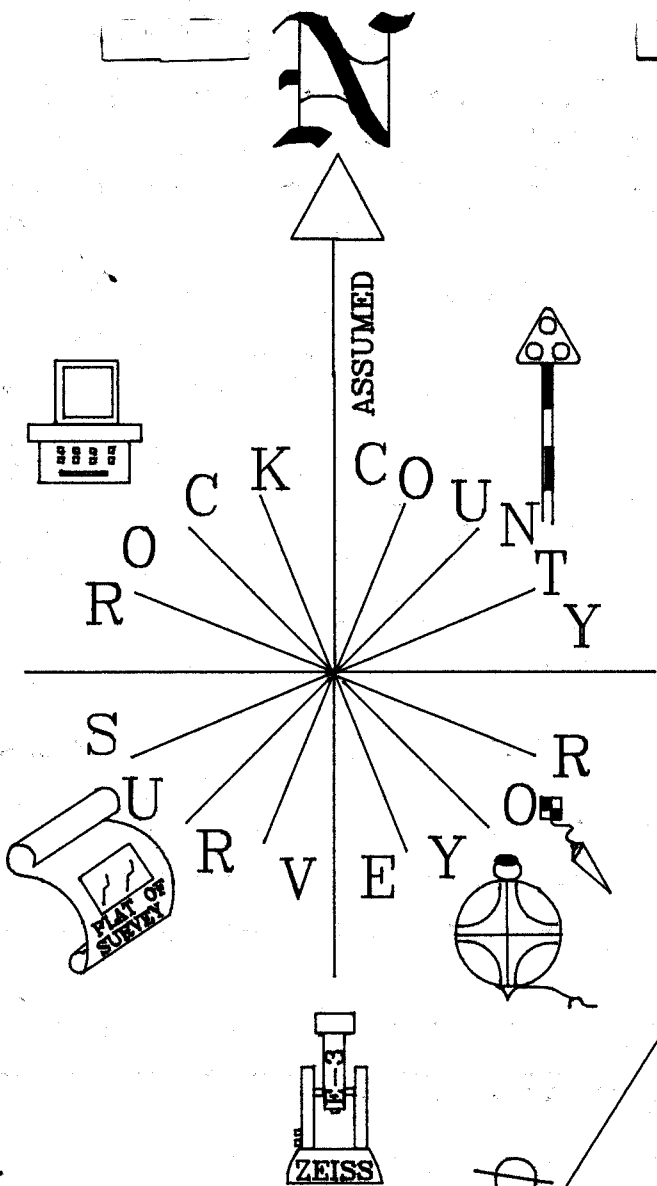
Date microfilmed _____

Number of included sheets _____
CORNER CODE

AFFIX YOUR LAND SURVEYOR SEAL

Donald Barnes
March 27, 1998

X-13(1)



- 1/2"x24" REROD
- ⊗ UTILITY POLE
- △ RD SIGN
- ◡ STOP SIGN
- BOOK #3 PG 3 & 56
- REREFERENCED FOR ROAD CONSTRUCTION

E 1/4 COR
SEC 33

Donald Barnes
 EMBOSSED SEAL
 March 25, 1998

X-13(1)