

Paper weight-110# (minimum)

Black nonfading ink required

# U.S. PUBLIC LAND SURVEY MONUMENT RECORD

For Public Land Survey Corners In:  
T. 4 N. R. 10 E. 4th P.M.  
CORNER CODE INDEX

WI ADMINISTRATIVE CODE A-E 7.08 REQUIREMENT  
REV 10/23/2004 USMONREC.DWG

UNION TWP

ROCK COUNTY WI

IF AVAILABLE  
ROCK COUNTY COORDINATES PREFERRED

	1	2	3	4	5	6	7	8	9	10	11	12	13	14	15	16	17	18	19	20	21	22	23	24	25	
A																										A
B																										B
C																										C
D																										D
E																										E
F																										F
G																										G
H																										H
J																										J
K																										K
L																										L
M																										M
N																										N
O																										O
P																										P
Q																										Q
R																										R
S																										S
T																										T
U																										U
V																										V
W																										W
X																										X
Y																										Y
Z																										Z

PLACE MONUMENT SYMBOL  AT PROPER LOCATION ON ABOVE INDEX

North \_\_\_\_\_ Elev. \_\_\_\_\_

East \_\_\_\_\_

Hor. Datum \_\_\_\_\_ Vert. Datum \_\_\_\_\_

LATITUDE \_\_\_\_\_ ELLIPS. HT. \_\_\_\_\_

LONGITUDE \_\_\_\_\_

NAD83(91) \_\_\_\_\_ NETWORK ADJ. YR 2010

GPS (X) \_\_\_\_\_ TRAVERSE (X) X

BASED ON THE FOLLOWING CONTROL:

CORNER MONUMENT

WITNESS MONUMENT

(a)

BEARINGS ARE BASED ON: ROCK COUNTY PROJECTION

FIELD BOOK \_\_\_\_\_ PAGE # \_\_\_\_\_  
OR OBSERVATION SHEET \_\_\_\_\_

SHEET 1 OF 3

SHOW A PLAN VIEW DRAWING DEPICTING THE CORNER MONUMENT AND SURROUNDING PHYSICAL FEATURES, INCLUDING THE EXCAVATION AREA AND DEPTH.

PLANNING & ZONING COMMITTEE ADOPTED THIS FORM ON 12/2/1982

CORNER CODE R-5(1)

UN583 NECORSEC30

(B) Describe any record evidence, monument evidence, occupational evidence, testimonial evidence or any other material evidence you considered, and whether the monument was found or placed.

- 1833 HARRISON T4N R10E 4TH MER EAST BET. SECS 20 & 29  
2640.00 TEMPY SEC COR  
5016.0 LEAVE PRAIRIE & ENTER TIMBER  
5291.88 INT. E BDY AT P  
LAND ROLLING 1ST RATE PRAIRIE SOIL GOOD-  
UNDERGROWTH GRASS & WEEDS  
WEST COR WEST BET SECS 20 & 29  
2645.94 QUARTER SEC COR {SET A POST & RAISED A  
MOUND  
5291.88 SEC COR.
- 1833 HARRISON T4N T10E 4TH MER NORTH BET SECS 29 & 30  
2640.00 QUARTER SEC COR SET POST & RAISED MOUND  
5280.00 SET COR TO SECS 19,20,29,30 POST & RAISED  
MOUND LAND ROLLING 1ST RATE PRAIRIE
- 1833 HARRISON T4N R10E 4TH MER WEST BETWEEN SECS 19  
& 30  
2640.00 QUARTER SEC COR. SET POST & RAISED MOUND  
5570.40 INT. RANGE LINE SET POST & RAISED MOUND  
LAND ROLLING 1ST RATE PRAIRIE GOWTH  
GRASS & WEEDS
- 1833 HARRISON T4N T10E 4TH MER NORTH BET SECS 19 & 20  
2458.50 BROOK 5.28' CRS N.E.  
2640.00 QUARTER SEC COR. SET A POST & RAISED A  
MOUND  
5280.00 SET COR TO SECS 17,18,19,20 POST & RAISED  
MOUND LAND ROLLING & SOMEWHAT BROKEN  
SOIL GOOD & 1ST RATE GROWTH GRASS & WEEDS
- 1860 RUGER VOL 1 PG 148 SET LIMESTONE 18X9X6 &  
SURROUNDED IT WITH SMALL LIME STONES. VAR7-55  
2647.92 TO SET HH 15X8X7 @ N 1/4 COR SEC 30, VAR 8-32  
2652.54 TO SET HH 17X13X7 @ E 1/4 COR SEC 30, & VAR7-  
55 5579.64 TO NW COR SEC 30
- 1860 RUGER VOL 1 PG 149 SET LS 18X9X6 & SURROUNDED IT  
WITH SMALL LIME STONES. 2647.92 TO S 1/4 COR SEC 19
- 1870 RUGER AUG REMON-85 NORTH ON EAST LINE OF SE 1/4  
SEC 30 ON A VAR 7-23; AT  
2641.67 INTERSECTED QUARTER LINE AT QUARTER  
CORNER. FOUND HARD HEAD STONE AT CORNER  
SET BY SELF IN PREVIOUS SURVEY.  
NORTH ON EAST LINE OF NE 1/4 SEC 30  
ON A VAR 7-23; AT  
2648.58 INTERSECTED NORTH BOUNDARY LINE AT  
CORNER. FOUND LIMESTONE AT CORNER SET BY  
SELF IN PREVIOUS SURVEY.
- 1870 RUGER AUG REMON-95 EAST ON SOUTH LINE OF SW 1/4  
SEC 20 ON A VAR 7-45 AT  
2643.30 INTERSECTED QUARTER LINE AT QUARTER  
CORNER FOUND REMAINS OF OLD STAKE AT  
CORNER.  
EAST ON SOUTH LINE OF SE 1/4 SEC 20  
ON A VAR 8-20; AT  
2657.82 INTERSECTED EAST BOUNDARY LINE AT  
CORNER. ESTABLISHED CORNER FROM NE  
BEARING TREE.
- 1870 RUGER AUG REMON-85 WEST ON NORTH LINE OF NE 1/4  
SEC 30 ON A VAR 7-11; AT  
2647.48 INTERSECTED QUARTER LINE AT QUARTER  
CORNER. FOUND HARD HEAD STONE ON CORNER  
SET BY SELF IN PREVIOUS SURVEY.  
WEST ON NORTH LINE OF NW 1/4 SEC 30  
ON A VAR 7-30; AT

Donald  
Baines  
Oct 19, 2011

SHEET 1 OF 3  
CORNER CODE R-5(1)

UN583 NECORSEC30

- 2931.28 INTERSECTED WEST BOUNDARY LINE AT CORNER. FOUND LIMESTONE AT CORNER SET BY SELF IN PREVIOUS SURVEY.
- 1870 RUGER AUG REMON-88 SOUTH ON EAST LINE OF NE 1/4 COR SEC 19 ON A VAR 7-20; AT  
2642.14 INTERSECTED QUARTER LINE 7.92' EAST OF QUARTER CORNER. FOUND LIMESTONE AT CORNER SET BY SELF IN A PREVIOUS SURVEY.  
COR VAR 7-10  
SOUTH ON EAST LINE OF SE 1/4 SEC 19 ON A VAR 6-40; AT  
2638.52 INTERSECTED SOUTH BOUNDARY LINE 9.90' EAST OF CORNER. COR VAR 6-27
- 1936 SUNNY VOL 3 PG 302 FD STONE MON NEAR SURFACE. REF. SAME. USED TREES FOR REFERENCE MONUMENTS. ON LINE WITH N/S FENCE ON SOUTH SIDE OF RD.
- 1963 BATTERMAN VOL 4 PG 245 FD CUT STONE. REF. SAME.
- 1971 SCHIMEAL #5152 PIN OVER A STONE. PIN AT SW CORNER OF SECTION 20-4-10. FROM SW CORNER OF SECTION 20 NB9-23-30E 243.00 TO A PIN & FROM SW CORNER OF SECTION 20 NORTH 273.50 TO A PIN. IN RD CTH C & PLEASANT PRAIRIE RD INT. NO PIPE ON R/W LINE AT SW COR OF LOT. ANGLE OF 89-23-50 FROM ALONG THE WEST LINE OF SEC 20 TO THE SOUTH LINE OF SEC 20.
- 1981 BARNES R-5 SET PK FROM TIES IN VOL 4 PG 245. 2' SOUTH OF E/W CENTER OF PVMT
- 1982 BARNES VOL 6 PG 288 SHOWS RECORD DISTANCES
- 1993 COMBS CSM VOL 16 PG 232 FD PK 2646.80 TO BRASS PLUG @ E 1/4 COR SEC 19

FD MAG NAIL, SW & SE REFERENCE PIPES. NW REFERENCE PIPE WAS DESTROYED BY INSTALLATION OF NEW UP. MAG NAIL IS IN HARMONY WITH SW REFERENCE PIPE BUT NOT SE REFERENCE PIPE. FD BENT SW REFER. PIPE & STRAIGHTENED SAME.

C) Was the corner restored through acceptance of (1) an obliterated evidence location, or, (2) a found perpetuated location?

ACCEPTED FD MAG NAIL, WHICH PERPETUATES THE CUT LIMESTONE.

D) Describe any material discrepancy between the location of the corner as restored or reestablished and the location of that corner as previously restored or reestablished by distance and direction. Show the discrepancy on the plan view drawing under (a), above. Show the distances between the corner as previously restored or reestablished and (1) the corner as restored or reestablished, and (2) to at least 4 of the witness monuments shown on the drawing in (a), above.

NONE

(E) Was the corner reestablished through lost corner proportionate methods? If so, show the method, including the directions and distances to other public land survey corners used as evidence or used for proportioning the corner location.

NO

I, Donald Barnes, hereby certify that the corner location as identified by the corner code index was determined by me under my direction and control and that this U.S. Public Land Survey Monument Record is correct and complete to the best of my knowledge and belief.

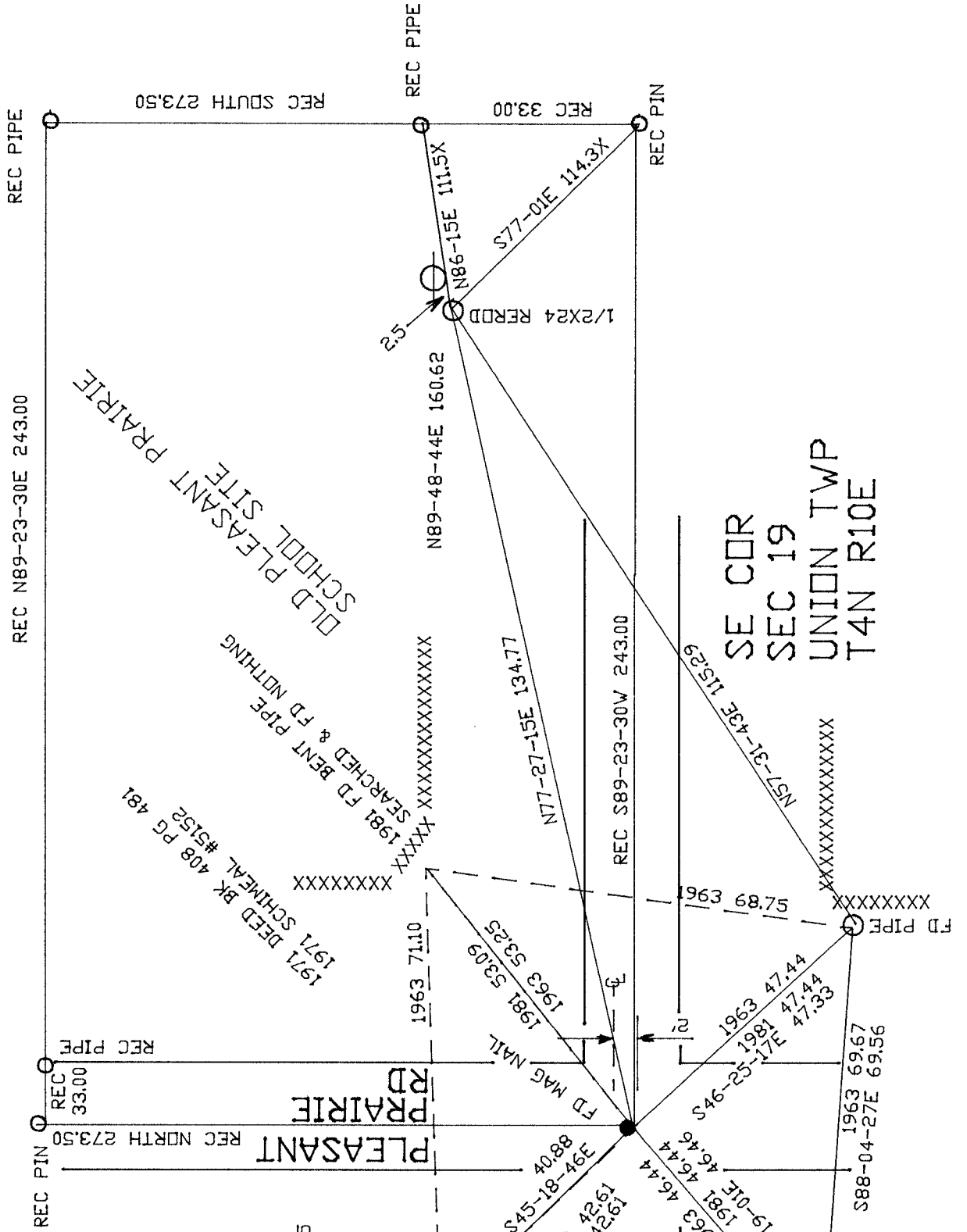
SHEET 2 OF 3

CORNER CODE R-5(1)

A.E. 7.08 REQUIREMENT

*Donald Barnes*  
Barnes

Oct 19, 2011



SE COR  
SEC 19  
UNION TWP  
T4N R10E

- 1981 BARNES R-5 FB#1 PG 68
- 1981 SET PK FROM TIES
- 1963 BATTERMAN VOL 4 PG 245
- 1936 SUNNY VOL 3 PG 302 TO TREES

- FD 1/2" REROD NEW UP
- 1981 FD PIPE SEARCH & FD NOTHING

- FD BENT PIPE STRAIGHTENED SAME

CTH C

*Donald B...*  
EMBOSSED SEAL  
OCT 20, 2011

SHEETS 3 OF 3  
~~5~~-5(1)  
R