

Paper weight-110# (minimum)

Black nonfading ink required

U.S. PUBLIC LAND SURVEY MONUMENT RECORD

For Public Land Survey Corners In:
T. 4 N. R. 10 E. 4th P.M.
CORNER CODE INDEX

WI ADMINISTRATIVE CODE A-E 7.08 REQUIREMENT
REV 10/23/2004 USMONREC.DWG

UNION TWP

ROCK COUNTY WI

IF AVAILABLE
ROCK COUNTY COORDINATES PREFERRED

North _____ Elev. _____

East _____

Hor. Datum _____ Vert. Datum _____

LATITUDE _____ ELLIPS. HT. _____

LONGITUDE _____

NAD83(91) _____ NETWORK ADJ. YR 2010

GPS (X) _____ TRAVERSE (X) X

BASED ON THE FOLLOWING CONTROL:

1	2	3	4	5	6	7	8	9	10	11	12	13	14	15	16	17	18	19	20	21	22	23	24	25	
A																									A
B	6																								B
C		5																							C
D			4																						D
E				3																					E
F					2																				F
G	7																								G
H		8																							H
I			9																						I
J				10																					J
K					11																				K
L	18																								L
M		17																							M
N			16																						N
O				15																					O
P					14																				P
Q	19																								Q
R		20																							R
S			21																						S
T				22																					T
U					23																				U
V						24																			V
W							25																		W
X								26																	X
Y									27																Y
Z										28															Z
											29														
												30													
													31												
														32											
															33										
																34									
																	35								
																		36							

PLACE MONUMENT SYMBOL AT PROPER LOCATION ON ABOVE INDEX

CORNER MONUMENT

WITNESS MONUMENT

(a)

ROCK COUNTY PROJECTION
BEARINGS ARE BASED ON: _____

FIELD BOOK _____ PAGE # _____
OR OBSERVATION SHEET _____

SHEET 1 OF 3

SHOW A PLAN VIEW DRAWING DEPICTING THE CORNER MONUMENT AND SURROUNDING PHYSICAL FEATURES, INCLUDING THE EXCAVATION AREA AND DEPTH.

PLANNING & ZONING COMMITTEE ADOPTED THIS FORM ON 12/2/1982

CORNER CODE G-5(1)

UN 535 WYA SEC 8

(B) Describe any record evidence, monument evidence, occupational evidence, testimonial evidence or any other material evidence you considered, and whether the monument was found or placed.

- 1833 HARRISON (NOV 10TH) T4N T10E 4TH MER NORTH BET
SECS 7 & 8
643.5 TO THE ROAD E & W
2640.00 QUARTER SEC COR {WO 19 N55W 64.68; W.O. 12
N25W 106.92' W.O. 19 & WO 12} MARKED
2310.00 ENTERED MARSH CRS S.E.
4950.00 LEAVE MARSH & ENTER TIMBER
5280.00 CORNER TO SECS 5,6,7,8 {BURR O 15 S85W
213.84'; BURR O 12 N83W 172.26' LAND 1ST 1/2
SAME AS BEFORE 2ND 1/2 LEVEL & WET 3RD
RATE BEING MOSTLY MARSH
- 1856 CHURCH VOL 1 PG 58 USED COR TO ESTABLISH E/W
CENTERLINE OF SEC 6, VAR 2649.24 TO NW & SW CORNERS
OF SEC 8. VAR 8 2682.57 TO CENTER OF SEC 8 & VAR 8
5365.14 TO E 1/4 COR SEC 8
- 1863 LOCKE VOL 1 PG 193 & 5090 STATES NOTHING ABOUT MON.
USED TO SUBDIVIDE SEC 7 2632.08 TO CENTER OF SEC 7 &
5361.18 TO W 1/4 COR SEC 7
- 1870 RUGER AUG REMON-121 SOUTH ON WEST LINE OF NW
1/4 SEC 8 ON A VAR 5-05; AT
2657.82 INTERSECTED QUARTER LINE 43.56' EAST OF
QUARTER CORNER. FOUND OLD STAKE AT
CORNER ALSO FOUND STUMPS OF BOTH BEARING
TREES. COR VAR 4-09
SOUTH ON WEST LINE OF SW 1/4 SEC 8
ON A VAR 8-00; OFFSET EAST 13.20' AT
2644.62 INTERSECTED SOUTH BOUNDARY LINE 32.34'
EAST OF CORNER COR VAR 7-34
- 1870 RUGER VOL 2 PG 50 STONE MON. USED TO SUBDIVIDE SEC
7.
- 1890 BLEEDHORN VOL 2 PG 429 & #5101 MON. USED TO
SUBDIVIDE SEC 8. VAR 5-15 2709.96 TO HH @ CENTER OF
SEC 8 & 5463.48 TO MON @ E 1/4 COR SEC 8.
- 1904 KERCH VOL 3 PG 21 MONUMENT. 2656.2 TO MON UNDER
ROAD SET HH OVER STONE. 2656.2 TO NE COR SEC 7,
2597.6 TO FD HH 24X9X8 SURROUNDED BY HH STONES @
CENTER OF SEC 7
- 1982 BARNES VOL 6 PG 273 SHOWS REC DISTANCES.
- 1986 SARKO CSM VOL 12-360. IN THE SURVEY HE USED THE
CORNER. THE ZONING ADMINISTRATOR PER THE COUNTY
SUBDIVISION ORDINANCE REQUESTED THAT I REVIEW THE
MAP PRIOR TO RECORDING. THE REVIEW COMMENTS
INSTIGATED A CONVERSATION BETWEEN MR SARKO &
MYSELF. HE STATED THAT HE DID NOT FIND THE MONUMENT
& HE PLACED A PK NAIL AT THE CORNER, WHICH HE WOULD
REFERENCE AND RECORD. HE STATED THAT HE
ESTABLISHED THE CORNER BY OCCUPATION.
- 1986 BARNES G-5 THERE IS A DISCREPANCY BETWEEN THE CUT
LIMESTONE AND THE CORNER THAT ROLAND SARKO
ESTABLISHED. FD CUT LIMESTONE ON WEST SIDE OF N/S
FENCE & E/W FENCE GOING EAST. REFERENCED SAME.
- 1988 BARNES #12708 FD LS N88-57-18E 2712.54 TO INT OF 1/4
LINES & N88-57-18E 5474.78 TO FD PK @ E 1/4 COR SEC 8
- 1996 KARNS CSM VOL 19 PG 340 STONE. USED STONE @ SW COR
SEC 8 FOR LINE

FD CUT LIMESTONE & REFERENCE MONUMENTS. USED MY OLD
OBSERVATIONS.

Ronald Barnes
Nov 1, 2011

SHEET 1 OF 3

CORNER CODE G-5(1)

UN535 W1/4CORSECB

C) Was the corner restored through acceptance of (1) an obliterated evidence location, or, (2) a found perpetuated location?

ACCEPTED FD CUT LIMESTONE.

D) Describe any material discrepancy between the location of the corner as restored or reestablished and the location of that corner as previously restored or reestablished by distance and direction. Show the discrepancy on the plan view drawing under (a), above. Show the distances between the corner as previously restored or reestablished and (1) the corner as restored or reestablished, and (2) to at least 4 of the witness monuments shown on the drawing in (a), above.

AS PREVIOUSLY STATED.

(E) Was the corner reestablished through lost corner proportionate methods? If so, show the method, including the directions and distances to other public land survey corners used as evidence or used for proportioning the corner location.

NO

I, **Donald Barnes**, hereby certify that the corner location as identified by the corner code index was determined by me under my direction and control and that this U.S. Public Land Survey Monument Record is correct and complete to the best of my knowledge and belief.

SEALED
Donald
Barnes
Nov 1, 2011

SHEET 2 OF 3

CORNER CODE G-5(1)

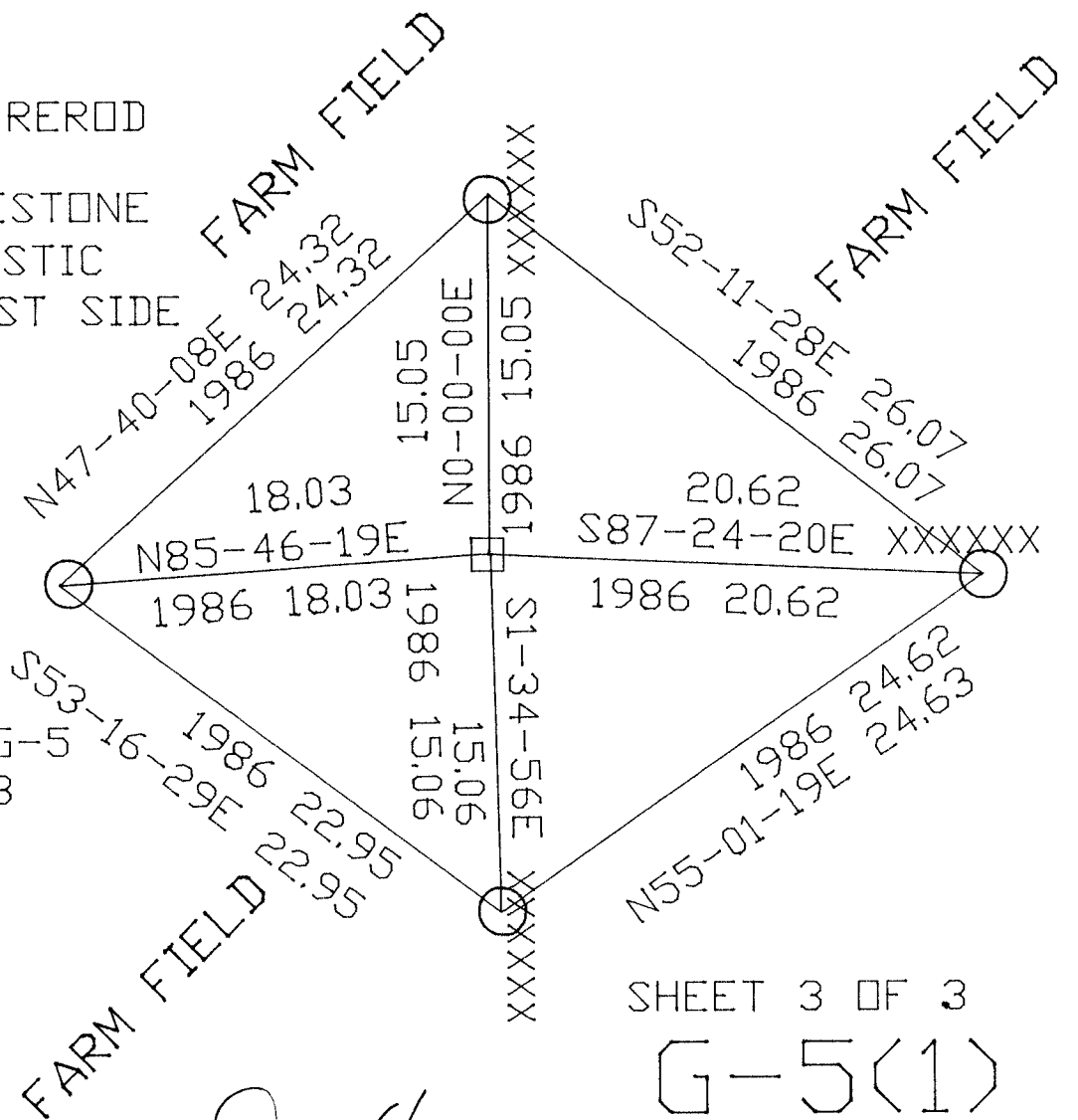
A.E. 7.08 REQUIREMENT

○ FD 3/8X24 REROD

□ FD CUT LIMESTONE WITH 6' PLASTIC POST ON WEST SIDE OF L.S.

15" DEEP

1986 BARNES G-5
FB #2 PG 13
W 1/4 COR
SEC 8
UNION TWP
T4N R10E



SHEET 3 OF 3

G-5(1)

Donald Barnes
Nov 1, 2011