

U.S. PUBLIC LAND SURVEY MONUMENT RECORD

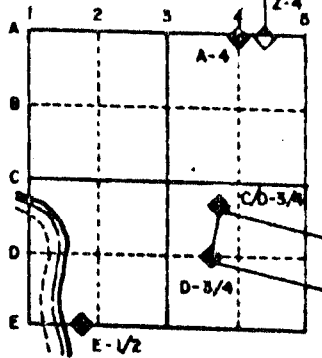
For Public Land Survey Corners in the
T. 2 N., R. 12 E.

CORNER CODE INDEX

	1	2	3	4	5	6	7	8	9	10	11	12	13	14	15	16	17	18	19	20	21	22	23	24	25
A																									
B																									
C	6																								
D		5																							
E			4																						
F				3																					
G					2																				
H																									
I																									
J																									
K																									
L																									
M																									
N																									
O																									
P																									
Q																									
R																									
S																									
T																									
U																									
V																									
W																									
X																									
Y																									
Z																									

PLACE MONUMENT SYMBOL (◆) AT PROPER LOCATION ON ABOVE INDEX

EXAMPLE



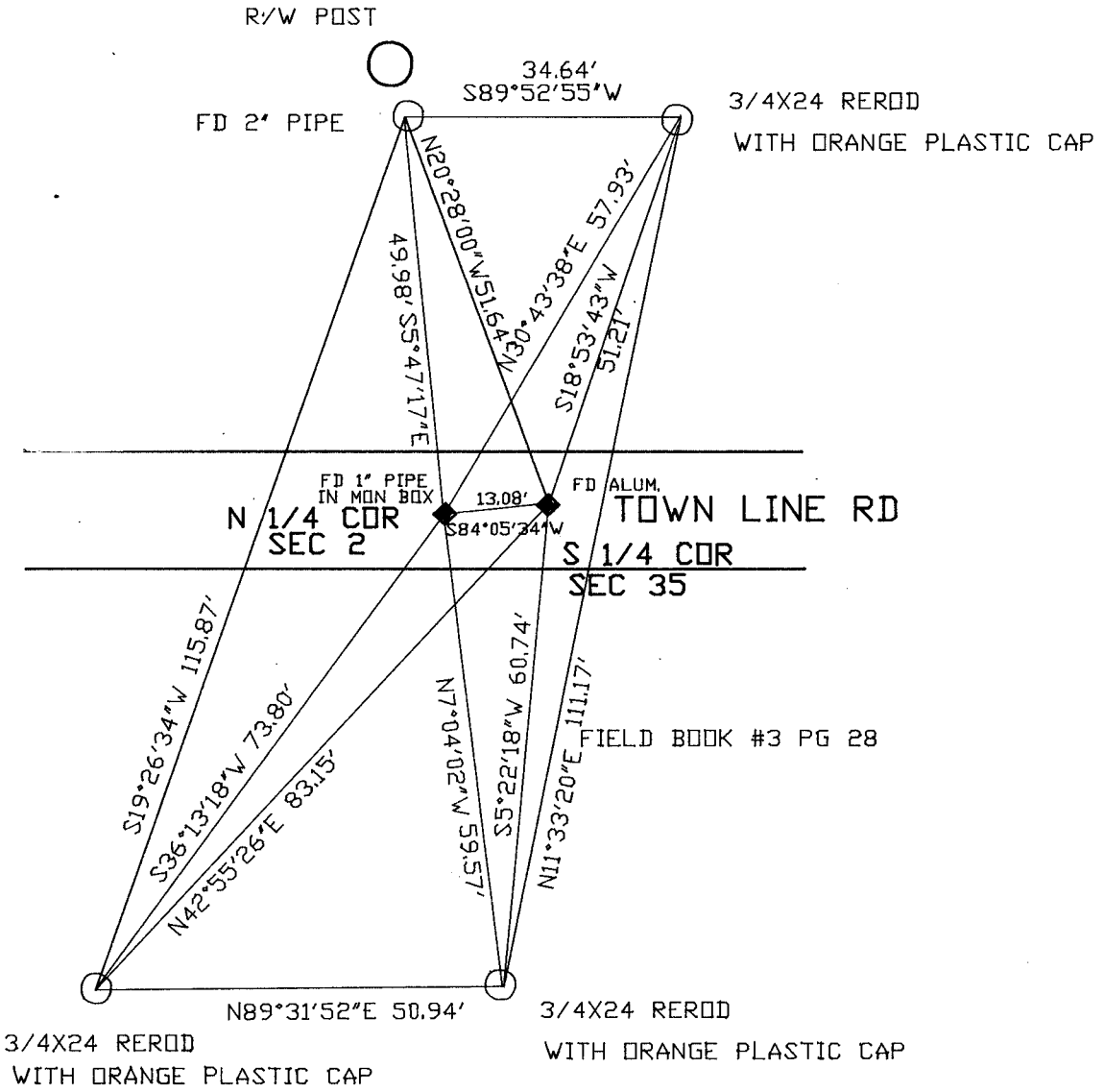
ROCK TWP
ROCK COUNTY WI

IF AVAILABLE
STATE PLANE COORDINATES

North (Y) _____ Eleve. (Z) _____
 East (X) _____ Zone _____
 Hor. Datum _____ Vert. Datum _____

◆ CORNER MONUMENT ○ WITNESS MONUMENT

BEARINGS ARE BASED ON: ASSUMED



RECORDED

SHEET ___ OF ___

CORNER CODE: Z 19

(B) Describe any record evidence, monument evidence, occupational evidence, testimonial evidence or any other material evidence you considered, and whether the monument was found or placed.

1833 MULLETT ORIGINAL GOVERNMENT SURVEYOR. FIELD NOTES - EAST ON SOUTH SIDE OF SECTION 35. SET POST IN PRAIRIE AND RAISED A MOUND.

1891 BLEEDORN VOL 2 PG 443. JOLIET LIMESTONE 20X11X6. SHOWS 2656.17 TO THE SW CORNER OF SECTION 35 AND 2651.88 TO THE SE CORNER OF SECTION 35.

1979 BARNES VOL 5 PG 576 SHOWS ORIGINAL GOVERNMENT AND BLEEDORN'S RECORD DISTANCES.

1980 BARNES VOL 6 PG 15. DUG 2X2X6 HOLD AND FOUND NOTHING. PLACED ALUMINUM MONUMENT ON LINE WITH THE N 1/4 CORNER OF SECTION 2 BELOIT TOWNSHIP ANT THE SE CORNER OF SECTION 35 ROCK TOWNSHIP AT RECORD DISTANCE. SHOWS A DISTANCE OF 13.00' TO THE N 1/4 CORNER OF SECTION 2 BELOIT TOWNSHIP.

FOUND ALUMINUM MONUMENT.

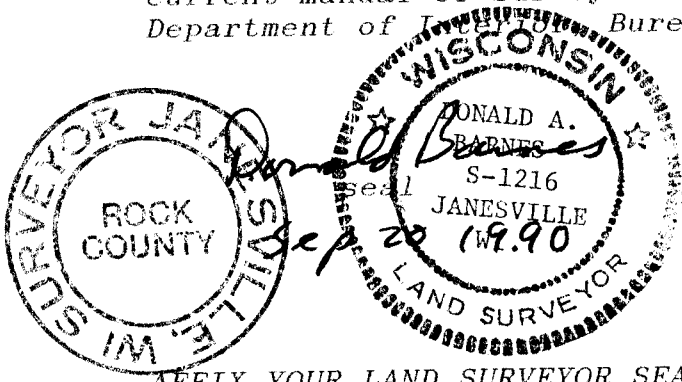
C) Was the corner restored through acceptance of (1) an obliterated evidence location, or, (2) a found perpetuated location?

ACCEPTED FOUND ALUMINUM MONUMENT.

D) Describe any material discrepancy between the location of the corner as restored or reestablished and the location of that corner as previously restored or reestablished by distance and direction. Show the discrepancy on the plan view drawing under (a), above. Show the distances between the corner as previously restored or reestablished and (1) the corner as restored or reestablished, and (2) to at least 4 of the witness monuments shown on the drawing in (a), above.

(E) Was the corner reestablished through lost corner proportionate methods? If so, show the method, including the directions and distances to other public land survey corners used as evidence or used for proportioning the corner location.

I, Donald Barnes, hereby certify that the corner points as identified by the corner code index were, in a field survey on, August 17, 1990, established, re-established, monumented, re-monumented, recovered or restored as expressed below and in conformance with the regulations and rules as required in the current manual of survey instructions of the United States Department of Interior Bureau of Land Management.



AFFIX YOUR LAND SURVEYOR SEAL

COUNTY SURVEYOR FILING DATA

Date of computer entry _____

Date microfilmed _____

Number of included sheets _____

CORNER CODE

219