

# U.S. PUBLIC LAND SURVEY MONUMENT RECORD

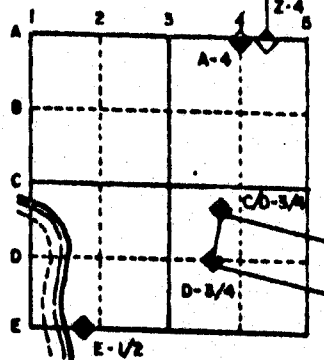
For Public Land Survey Corners in the  
T. 2 N., R. 12 E.

## CORNER CODE INDEX

	1	2	3	4	5	6	7	8	9	10	11	12	13	14	15	16	17	18	19	20	21	22	23	24	25
A																									
B																									
C	6																								
D		5																							
E			4																						
F				3																					
G					2																				
H																									
I	7																								
J		8																							
K			9																						
L				10																					
M					11																				
N						12																			
O							13																		
P								14																	
Q									15																
R										16															
S											17														
T												18													
U													19												
V														20											
W															21										
X																22									
Y																	23								
Z																		24							
																			25						
																				26					
																					27				
																						28			
																							29		
																								30	
																									31
																									32
																									33
																									34
																									35
																									36

PLACE MONUMENT SYMBOL (◆) AT PROPER LOCATION ON ABOVE INDEX

### EXAMPLE



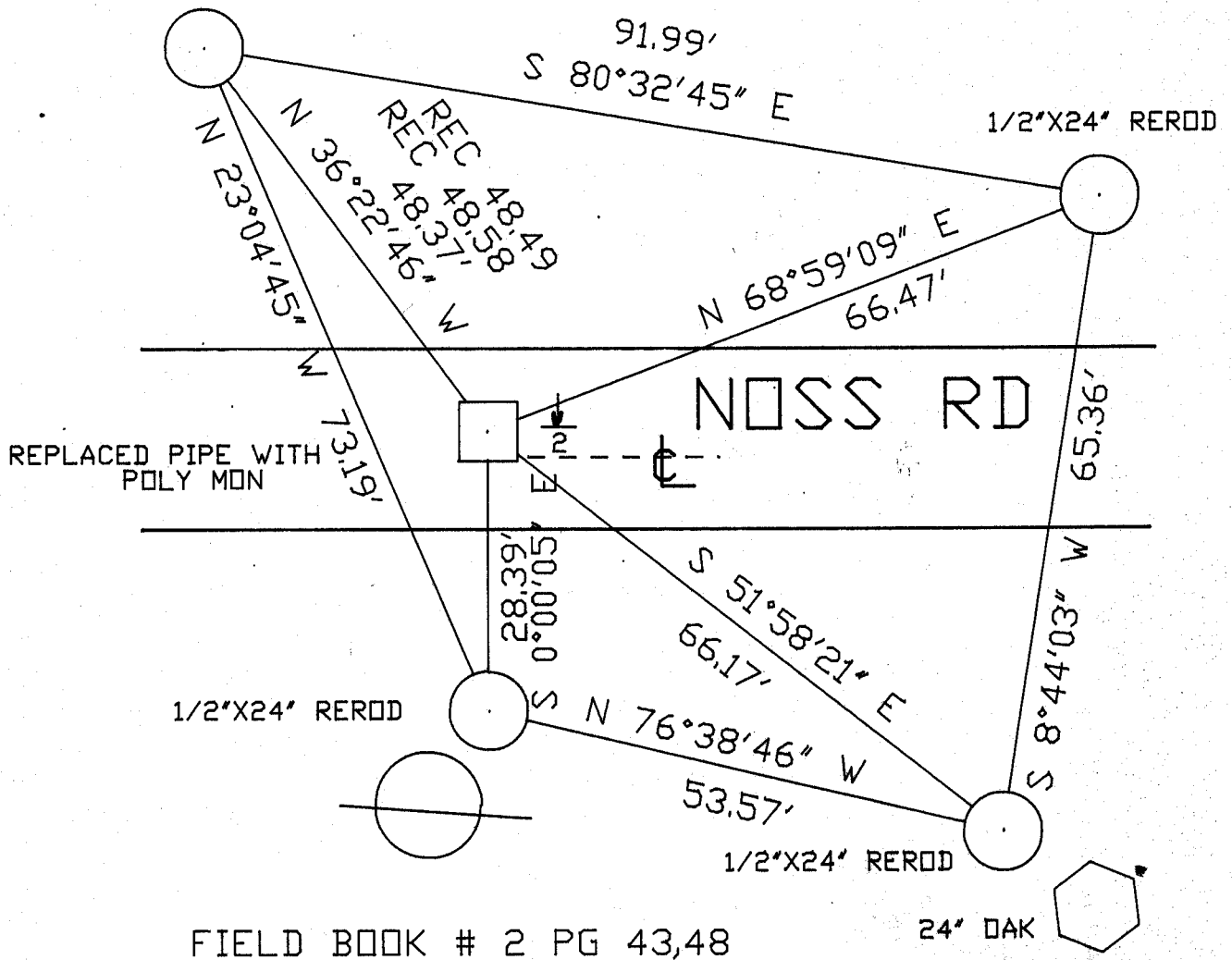
ROCK TWP  
ROCK COUNTY WI

IF AVAILABLE  
STATE PLANE COORDINATES

North (Y) \_\_\_\_\_ Eleve. (Z) \_\_\_\_\_  
 East (X) \_\_\_\_\_ Zone \_\_\_\_\_  
 Hor. Datum \_\_\_\_\_ Vert. Datum \_\_\_\_\_

e.) ◆ CORNER MONUMENT ○ WITNESS MONUMENT

FOUND 2" PIPE



BEARINGS ARE BASED ON: ASSUMED

FIELD BOOK # 2 PG 43,48

24" DAK

**MICROFILMED**

SHEET \_\_\_ OF \_\_\_

CORNER CODE: X9

(B) Describe any record evidence, monument evidence, occupational evidence, testimonial evidence or any other material evidence you considered, and whether the monument was found or placed.

- 1834 HARRISON. ORIGINAL FIELD NOTES. PLACED POST. BURR OAK 12 N87W 110 & W.OAK 24 N51E 136 LINKS.
- 1855 CHURCH VOL 1 PG 30 STATES NOTHING ABOUT CORNER. SHOWS BLACK OAK N 34 1/2 E 103 LINKS & BLACK OAK S 10 1/2 E 109 LINKS. SHOWS A DISTANCE OF 2646.27' TO THE NW AND SW CORNERS OF SECTION 33 AND 2641.32' TO THE CENTER OF SECTION 22.
- 1856 CHURCH VOL 1 PG 65 STATES NOTHING ABOUT CORNER. SHOWS A DISTANCE OF 2640' TO THE NW AND 2630.76 TO THE CENTER OF SECTION 33.
- 1952 BATTERMAN JR. PLAT OF SURVEY #3419 SHOWS PIN AND THE FOLLOWING DISTANCES:  
2627.30 TO PIN AT CENTER OF SECTION 33  
2653.47 TO SW CORNER OF SECTION 33  
2653.47 TO NW CORNER OF SECTION 33
- 1965 SHIMEALL PLAT OF SURVEY #3433 & 3425 SHOWS PIN AT CORNER.
- 1966 BATTERMAN VOL 4 PG 257. STATES THAT HE FOUND A PIN AS REFERENCE BY BATTERMAN AND FOUND A PIN OF UNKNOWN ORIGIN 10.92 TO THE SOUTH. THE ACCEPTED PIN IS 3.50 NORTH OF THE CENTER OF THE PAVEMENT. REFERENCED BOTH OF THE CORNERS.
- 1977 COMBS PLAT OF SURVEY #12897 RESET 1" PIPE AT CORNER.
- 1977 BARNES VOL 5 PG 235 FOUND 1 1/2" IRON PIPE. REFERENCED SAME.
- 1981 BARNES VOL 6 PG 143 SHOWS A 1952 BATTERMAN DISTANCE OF 2653.47' TO THE NW CORNER OF SECTION 33. ALSO SHOWS A 1952 BATTERMAN DISTANCE OF 2653.47 TO THE SW CORNER OF SECTION 33.

FOUND PIPE. REPLACED WITH POLY. MONUMENT.

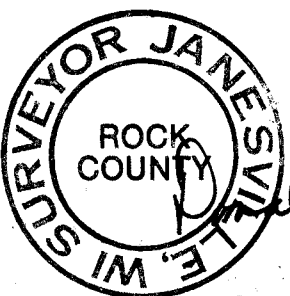
C) Was the corner restored through acceptance of (1) an obliterated evidence location, or, (2) a found perpetuated location?

ACCEPTED FOUND PERPETUATED LOCATION.

D) Describe any material discrepancy between the location of the corner as restored or reestablished and the location of that corner as previously restored or reestablished by distance and direction. Show the discrepancy on the plan view drawing under (a), above. Show the distances between the corner as previously restored or reestablished and (1) the corner as restored or reestablished, and (2) to at least 4 of the witness monuments shown on the drawing in (a), above.

DISTANCE TO NW AND SW CORNERS OF SECTION 33 INDICATE THAT THE FOUND PIN OF UNKNOWN ORIGIN THAT BATTERMAN JR. FOUND IN 1966 WAS ACTUALLY THE PIN THAT BATTERMAN SR. PLACED IN 1952. IT APPEARS THAT PIN WAS PROBABLY PLACED AT EQUAL DISTANCE BETWEEN THE NW AND SW CORNERS OF SECTION 33.

I, Donald Barnes, hereby certify that the corner points as identified by the corner code index were, in a field survey on, JUNE 21, 1989, established, re-established, monumented, re-monumented, recovered or restored as expressed below and in conformance with the regulations and rules as required in the current manual of survey instructions of the United States Department of Interior, Bureau of Land Management.



AFFIX YOUR LAND SURVEYOR SEAL

COUNTY SURVEYOR FILING DATA

Date of computer entry \_\_\_\_\_

Date microfilmed \_\_\_\_\_

Number of included sheets \_\_\_\_\_

CORNER CODE

X 9