

U.S. PUBLIC LAND SURVEY MONUMENT RECORD

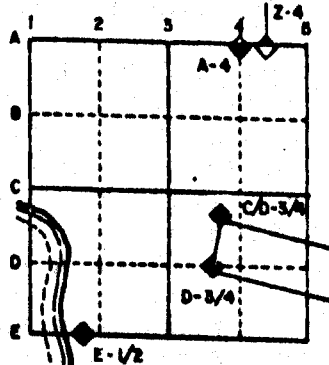
For Public Land Survey Corners in the
T. 2 N., R. 12 E.

CORNER CODE INDEX

	1	2	3	4	5	6	7	8	9	10	11	12	13	14	15	16	17	18	19	20	21	22	23	24	25
A																									
B																									
C	6																								
D		5																							
E			4																						
F				3																					
G					2																				
H	7																								
I		8																							
J			9																						
K				10																					
L					11																				
M	16																								
N		17																							
O			18																						
P				19																					
Q					20																				
R						21																			
S							22																		
T								23																	
U									24																
V										25															
W	30																								
X		29																							
Y			28																						
Z				27																					
					26																				
						25																			
							24																		
								23																	
									22																
										21															
											20														
												19													
													18												
														17											
															16										
																15									
																	14								
																		13							
																			12						
																				11					
																					10				
																						9			
																							8		
																								7	
																									6
																									5
																									4
																									3
																									2
																									1

PLACE MONUMENT SYMBOL (◊) AT PROPER LOCATION ON ABOVE INDEX

EXAMPLE



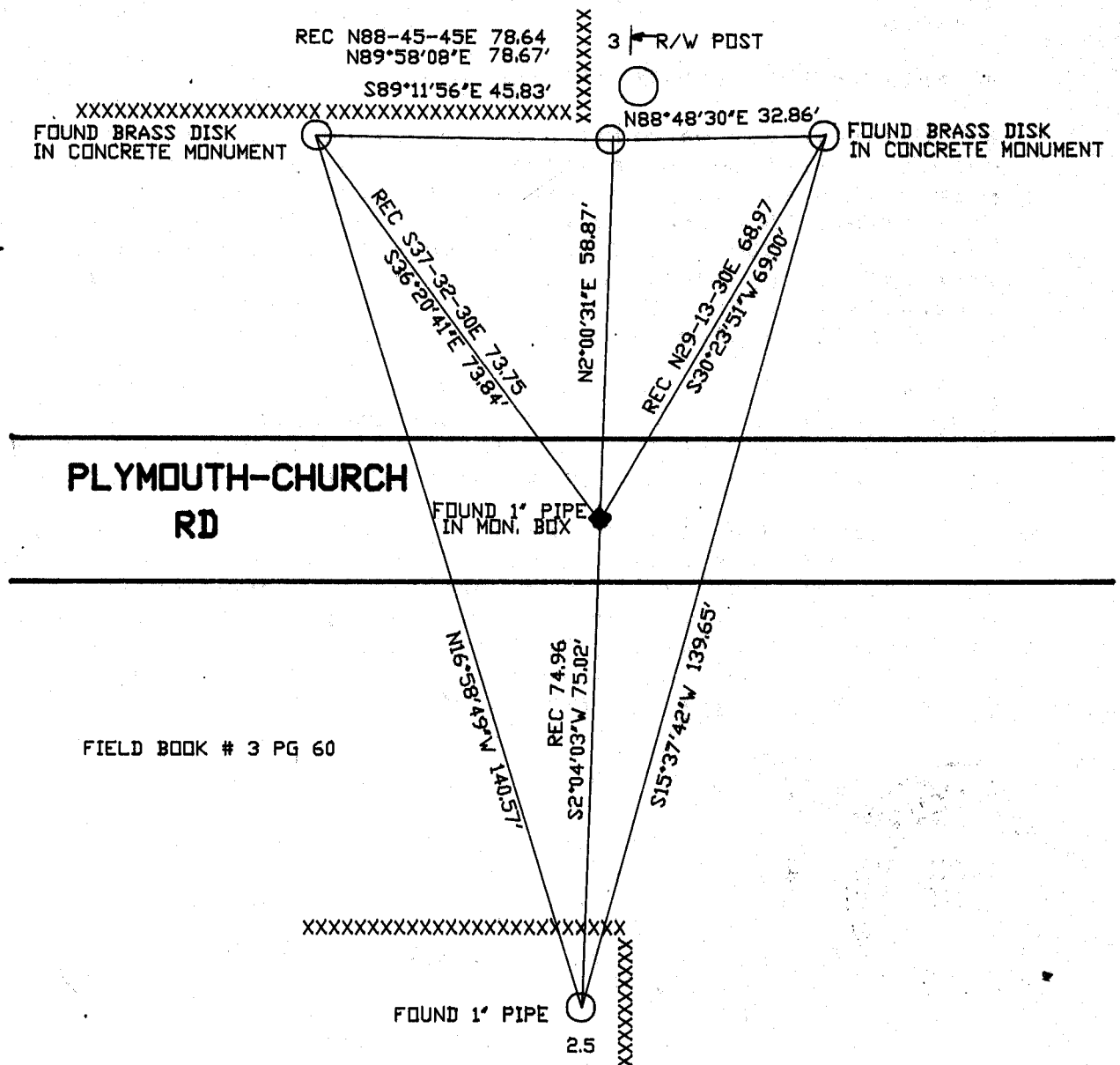
ROCK TWP
ROCK COUNTY WI

IF AVAILABLE
STATE PLANE COORDINATES

North (Y) _____ Eleve. (Z) _____
 East (X) _____ Zone _____
 Hor. Datum _____ Vert. Datum _____

◊ CORNER MONUMENT ○ WITNESS MONUMENT

BEARINGS ARE BASED ON: Township Project



FIELD BOOK # 3 PG 60

MICROFILMED

SHEET ___ OF ___

CORNER CODE: V9

(B) Describe any record evidence, monument evidence, occupational evidence, testimonial evidence or any other material evidence you considered, and whether the monument was found or placed.

- 1834 HARRISON ORIGINAL GOVERNMENT SURVEYOR. FIELD NOTES - CORNER TO SECTIONS 28,29,32,33 WHITE OAK 12 S4W 16, WHITE OAK 20 S58E 15, WHITE OAK 18 N31W 46, WHITE OAK 12 N73E 34.
- 1855 CHURCH VOL 1 PG 30 BURR OAK 16 N19 1/2E 152 LINKS. SHOWS 2778.60 TO THE N 1/4 COR OF SECTION 33. AND 2646.27 TO THE W 1/4 COR OF SECTION 33.
- 1856 CHURCH VOL 1 PG 65 SHOWS A DISTANCE OF 2651.22 TO THE N 1/4 CORNER OF SEC 33 AND 2640 TO THE W 1/4 COR OF SEC 33
- 1880 LEE VOL 2 PG 310 BEARING TREES GONE. FOUND REMAINS OF OLD STAKE IN CENTER OF ROAD. TOOK NEW BEARING TREES. HICHORY 6" S24W (MAGNETIC) 33' AND BLACK OAK 8" N33-50W 43 FT.
- 1964 BATTERMAN VOL 4 PG 205 FOUND PIN AT CORNER. REFERENCED SAME.
- 1966 VOL 4 PG 205 BATTERMAN PLACED 1" PIPE.
- 1966 VOL 4 PG 287 SHOWS REFERENCE TIES.
- 1972 LEE VOL 4 PG 578. SHOWS N89-26-10W 2673.37 TO THE S 1/4 COR OF SEC 29 AND S0-01-43W 2627.58 TO THE E 1/4 COR OF SEC 29.
- 1981 BARNES VOL 6 PG 143 SHOWS BATTERMAN (1952) DISTANCE OF 2653.47 TO THE E 1/4 COR OF SEC 32.

FOUND 1" PIPE IN MONUMENT BOX.

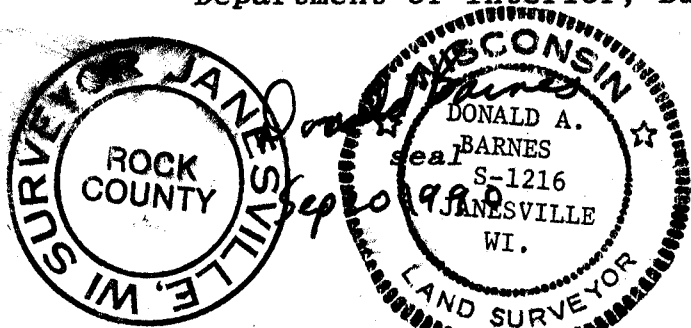
C) Was the corner restored through acceptance of (1) an obliterated evidence location, or, (2) a found perpetuated location?

ACCEPTED FOUND PERPETUATED LOCATION.

D) Describe any material discrepancy between the location of the corner as restored or reestablished and the location of that corner as previously restored or reestablished by distance and direction. Show the discrepancy on the plan view drawing under (a), above. Show the distances between the corner as previously restored or reestablished and (1) the corner as restored or reestablished, and (2) to at least 4 of the witness monuments shown on the drawing in (a), above.

(E) Was the corner reestablished through lost corner proportionate methods? If so, show the method, including the directions and distances to other public land survey corners used as evidence or used for proportioning the corner location.

I, Donald Barnes, hereby certify that the corner points as identified by the corner code index were, in a field survey on, JULY 14, 1989, established, re-established, monumented, re-monumented, recovered or restored as expressed below and in conformance with the regulations and rules as required in the current manual of survey instructions of the United States Department of Interior, Bureau of Land Management.



AFFIX YOUR LAND SURVEYOR SEAL

COUNTY SURVEYOR FILING DATA

Date of computer entry _____

Date microfilmed _____

Number of included sheets _____

CORNER CODE

19