

# U.S. PUBLIC LAND SURVEY MONUMENT RECORD

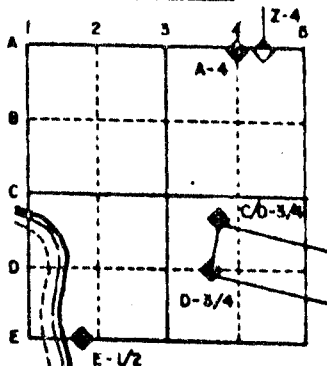
For Public Land Survey Corners in the  
T. 2 N., R. 12 E.

## CORNER CODE INDEX

	1	2	3	4	5	6	7	8	9	10	11	12	13	14	15	16	17	18	19	20	21	22	23	24	25
A																									
B																									
C	6																								
D		5																							
E			4																						
F				3																					
G					2																				
H																									
I																									
J																									
K																									
L																									
M																									
N																									
O																									
P																									
Q																									
R																									
S																									
T																									
U																									
V																									
W																									
X																									
Y																									
Z																									

PLACE MONUMENT SYMBOL (◆) AT PROPER  
LOCATION ON ABOVE INDEX

### EXAMPLE



ROCK TWP  
ROCK COUNTY WI

IF AVAILABLE  
STATE PLANE COORDINATES

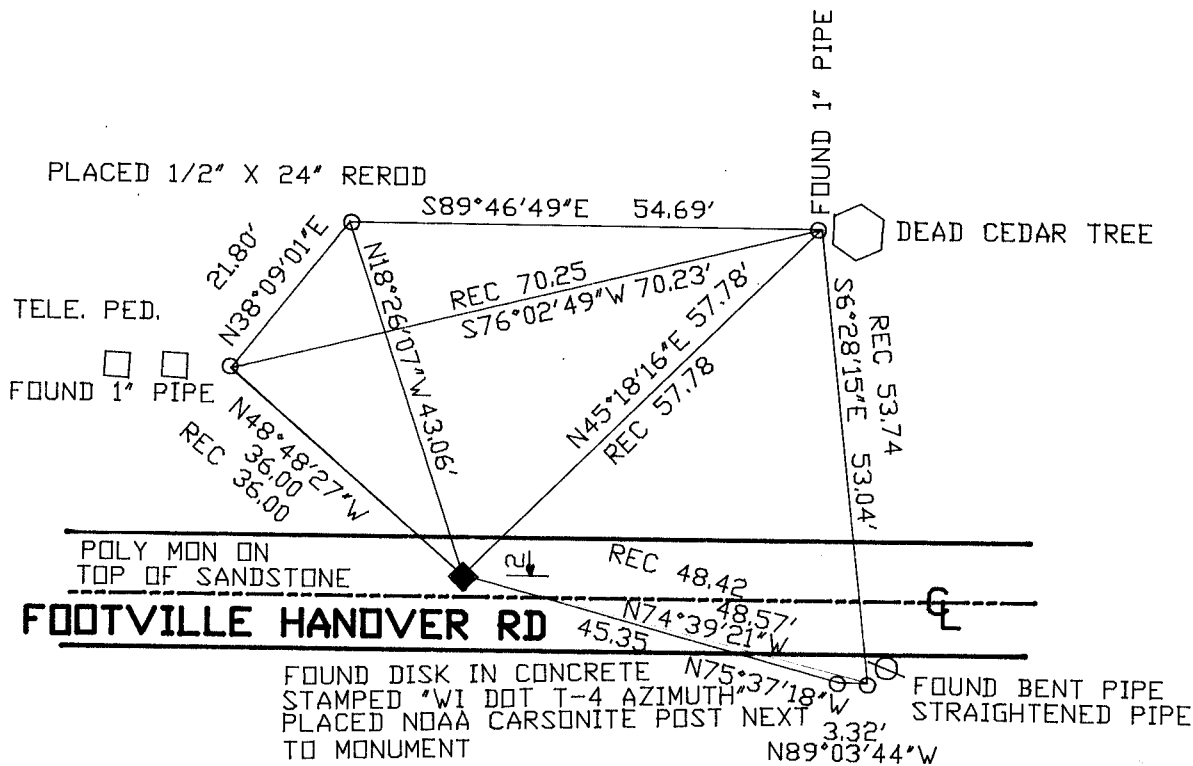
North (Y) \_\_\_\_\_ Eleve. (Z) \_\_\_\_\_  
 East (X) \_\_\_\_\_ Zone \_\_\_\_\_  
 Hor. Datum \_\_\_\_\_ Vert. Datum \_\_\_\_\_

◆ CORNER MONUMENT

○ WITNESS MONUMENT

*Poly Mon*

BEARINGS ARE BASED ON: ASSUMED



FIELD BOOK #2 PG 50,5759

MICROFILMED

SHEET \_\_\_ OF \_\_\_

CORNER CODE: E9

(B) Describe any record evidence, monument evidence, occupational evidence, testimonial evidence or any other material evidence you considered, and whether the monument was found or placed.

1853 McVEAN VOL 1 PG 17 STATES NOTHING ABOUT THE MONUMENT. SHOWS A DISTANCE OF 5261.52 TO THE SW CORNER OF SECTION 9.  
1975 SCHEORDER VOL 5 PG 56 CALLS FOR A 1" X 24" PIPE IN BLACK TOP. REFERENCED SAME.

FOUND 1" X 24" IRON PIPE. FOUND LARGE SANDSTONE ABOUT 2.1' DEEP. PLACED POLY MONUMENT ON TOP OF STONE AND REFERENCED SAME. TIES ARE IN HARMONY WITH OLD TIES.

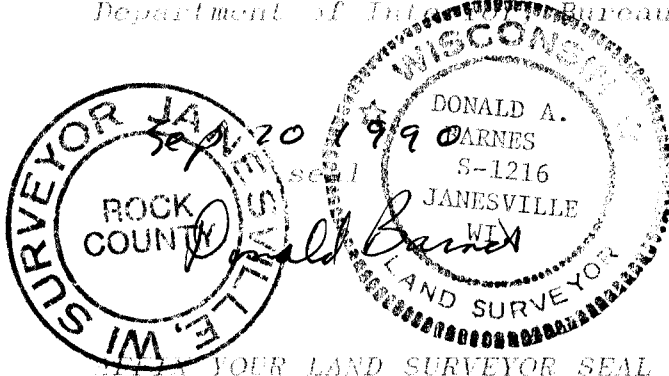
(C) Was the corner restored through acceptance of (1) an obliterated evidence location, or, (2) a found perpetuated location?

ACCEPTED FOUND PERPETUATED LOCATION.

(D) Describe any material discrepancy between the location of the corner as restored or reestablished and the location of that corner as previously restored or reestablished by distance and direction. Show the discrepancy on the plan view drawing under (a), above. Show the distances between the corner as previously restored or reestablished and (1) the corner as restored or reestablished, and (2) to at least 4 of the witness monuments shown on the drawing in (a), above.

(E) Was the corner reestablished through lost corner proportionate methods? If so, show the method, including the directions and distances to other public land survey corners used as evidence or used for proportioning the corner location.

I, Donald Barnes, hereby certify that the corner points as identified by the corner code index were, in a field survey on, JULY 6, 1989, established, re-established, monumented, re-monumented, recovered or restored as expressed below and in conformance with the regulations and rules as required in the current manual of survey instructions of the United States Department of Interior, Bureau of Land Management.



COUNTY SURVEYOR FILING DATA  
Date of computer entry \_\_\_\_\_  
Date microfilmed \_\_\_\_\_  
Number of included sheets \_\_\_\_\_  
CORNER CODE  
E9

YOUR LAND SURVEYOR SEAL