

U.S. PUBLIC LAND SURVEY MONUMENT RECORD

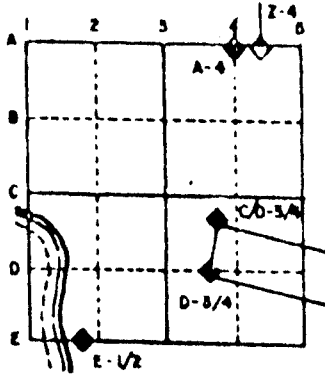
For Public Land Survey Corners in the
T. 2 N., R. 12 E.

CORNER CODE INDEX

	1	2	3	4	5	6	7	8	9	10	11	12	13	14	15	16	17	18	19	20	21	22	23	24	25
A																									
B																									
C	6																								
D		5																							
E			4																						
F				3																					
G					2																				
H																									
I																									
J																									
K																									
L																									
M																									
N																									
O																									
P																									
Q																									
R																									
S																									
T																									
U																									
V																									
W																									
X																									
Y																									
Z																									

PLACE MONUMENT SYMBOL (◆) AT PROPER LOCATION ON ABOVE INDEX

EXAMPLE



ROCK TWP
ROCK COUNTY WI

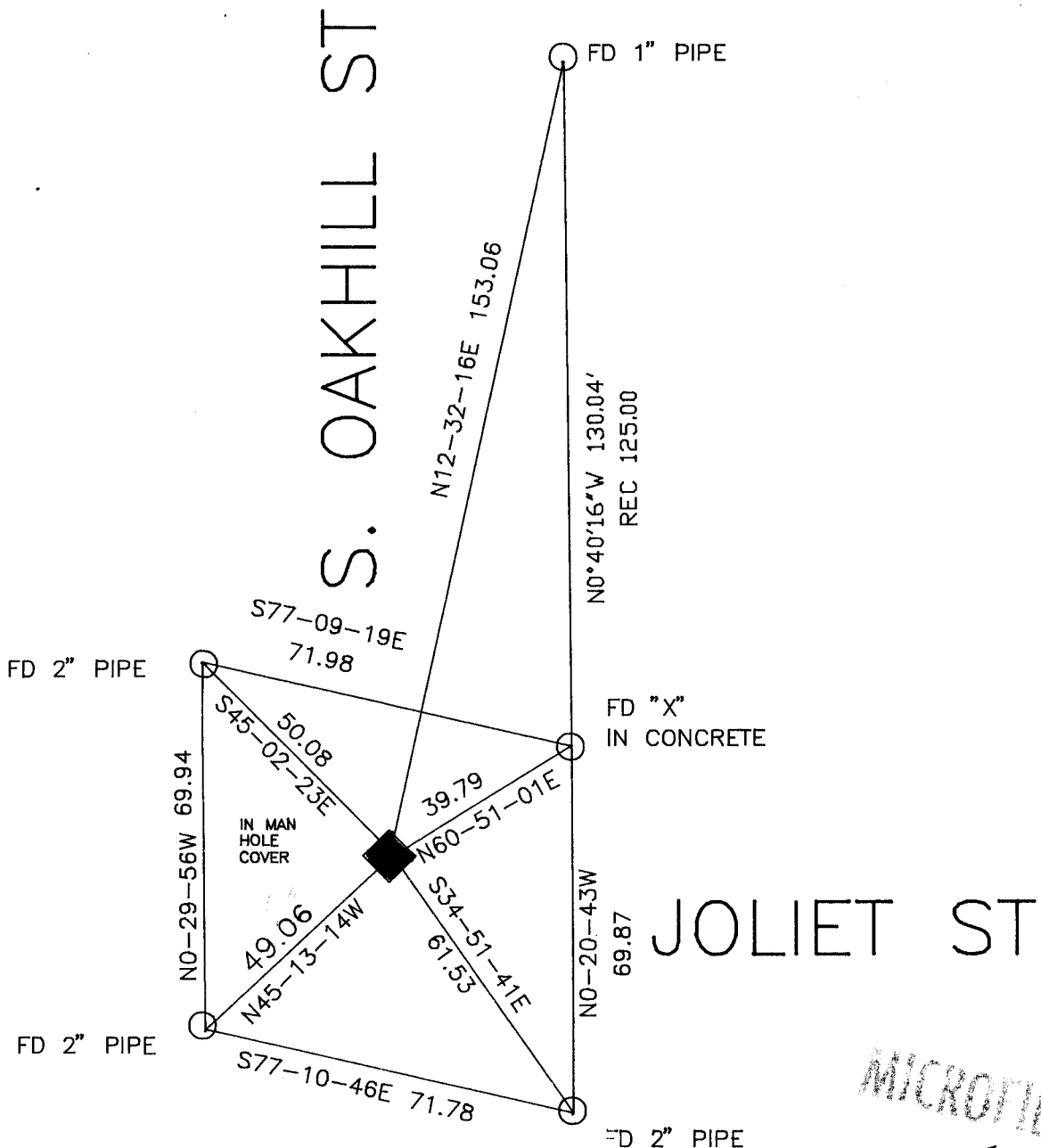
IF AVAILABLE
STATE PLANE COORDINATES

North (Y) _____ Elev. (Z) _____
 East (X) _____ Zone _____
 Hor. Datum _____ Vert. Datum _____

◆ CORNER MONUMENT

○ WITNESS MONUMENT

BEARINGS ARE BASED ON: Rock Twp



MICROFILMED

SHEET 4 OF 5

CORNER CODE: E 19

(B) Describe any record evidence, monument evidence, occupational evidence, testimonial evidence or any other material evidence you considered, and whether the monument was found or placed.

- 1836 LYON ORIGINAL GOVERNMENT SURVEYOR. FIELD NOTES - SET QUARTER SECTION POST. HICKORY 7 S16W 155, HICKORY 10 N29 1/2E 217. MEASURED 2645.94 TO SW AND SE CORNERS OF SECTION 2.
- 1865 LOCKE VOL 1 PG 246 FOUND BEARING TREES AND STAKE. ERROR IN DISTANCE TO BEARING TREES. MEASURED 2669.70 TO SE CORNER OF SECTION 2.
- 1869 RUGER VOL 2 PG 15. LIMESTONE 16X7X5, SAID STONE IS IN THE CENTER OF THE ROAD AND N30W 3.63 FROM SMALL MAPLE TREE. SHOWS 2649.9 TO CENTER OF SECTION 2 AND 2672.12 TO SE CORNER OF SECTION 2.
- 1870 RUGER VOL 2 PG 21 SHOWS 2665.74 TO NW CORNER OF SECTION 11 AND 2659.97 TO CENTER OF SECTION 11.
- 1871 RUGER VOL 2 PG 61. SHOWS A DISTANCE OF 2665.74 TO SW CORNER OF SECTION 2.
- 1881 HOLMES VOL 2 PG 341. SHOWS A DISTANCE OF 1336.06 TO S 1/16th CORNER OF SE 1/4 OF SECTION 2.
- 1884 RUGER VOL 2 PG 378. SHOWS A DISTANCE OF 2650.28 TO CENTER OF SECTION 2 AND 1335.02 TO S 1/6th CORNER OF SE 1/4 OF SECTION 2.
- 1936 SUNNY VOL 3 PG 288 FOUND 5X7X16 LIMESTONE MONUMENT. SHOWS 2 REFERENCE TIES AND A DISTANCE OF 2652.24 TO THE CENTER OF SECTION 2.
- 1959 KUKUSKE "LINCOLN PARK" BK20 PG 8 CALLS FOR 35.00 R/W ON EAST SIDE AND 35.01 ON WEST SIDE OF S. OAKHILL AND 25.01 AND 35.01 ON NORTH SIDE OF JOLIET ST. CALLS FOR A MAN HOLE COVER AT THE CORNER. CALLS FOR 1334.07 TO THE N 1/16TH CORNER OF THE NW 1/4 OF SECTION 11.
- 1960 KAKUSKE "SOUTHMORELAND" BK 21 PG 3 CALLS FOR 35.01 R/W ON WEST SIDE OF S. OAKHILL AND 35.01 ON SOUTH SIDE OF JOLIET ST.
- 1960 BERKE "MELODY LANE" BK 20 PG 31 CALLS FOR 35.01 R/W ON EAST SIDE OF S. OAKHILL AND 50.01 ON SOUTH SIDE OF JOLIET ST. DOES NOT STATE THE TYPE OF MONUMENT.
- 1963 KNOERR "SECOND MELODY LANE" BK 22 PG 13. DOES NOT STATE THE TYPE OF MONUMENT.

FOUND PK ON NORTH AND SOUTH SIDE OF MAN HOLE COVER. CORNER IS ON THE MANHOLE COVER. RESTORED CORNER BY USING R/W LINES OF SUBDIVISION PLATS.

C) Was the corner restored through acceptance of (1) an obliterated evidence location, or, (2) a found perpetuated location?

RESTORED CORNER THROUGH ACCEPTANCE OF FOUND PERPETUATED LOCATION. CORNER IS ON MAN HOLE COVER.

I, Donald Barnes, hereby certify that the corner points as identified by the corner code index were, in a field survey on, SEPTEMBER 4, 1991, established, re-established, monumented, re-monumented, recovered or restored as expressed below and in conformance with the regulations and rules as required in the current manual of survey instructions of the United States Department of Interior, Bureau of Land Management.



COUNTY SURVEYOR FILING DATA

Date of computer entry _____

Date microfilmed _____

Number of included sheets _____

CORNER CODE

AFFIX YOUR LAND SURVEYOR SEAL

1 of 5

E19

FD 1 1/2" PIPE

34.89

368.85'
S0°39'46"E

35.10

FD PIPE

164.43'
S0°44'38"E

1281.50'
S0°41'08"E

FD 1" PIPE

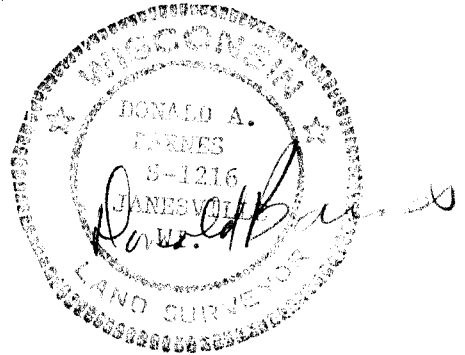
34.96

629.34'
S0°41'26"E

S. OAKHILL

REC
35.00
35.04

FD 1" PIPE



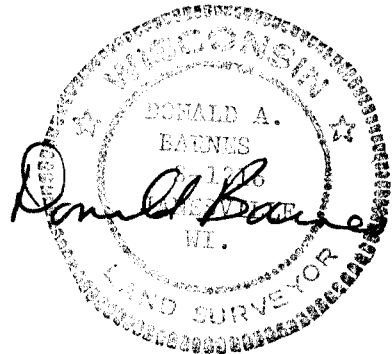
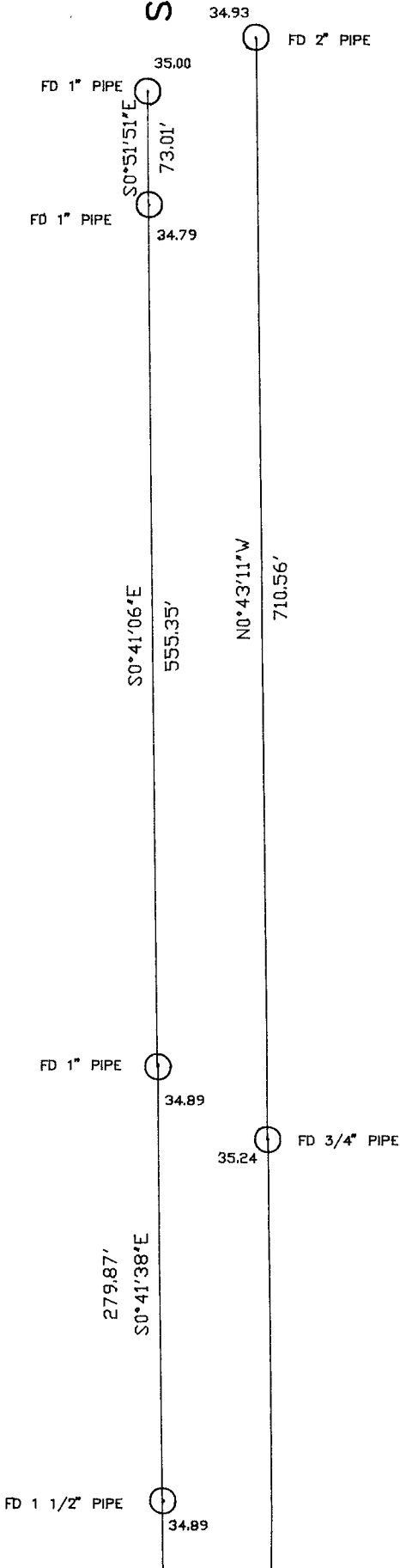
3 OF 5

LINCOLN PARK
KUKUSKE 1959
20 8&9

LINCOLN PARK
KUKUSKE 1959
20 8&9

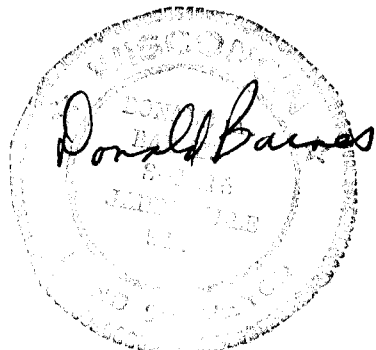
E19

SOUTH OAKHILL

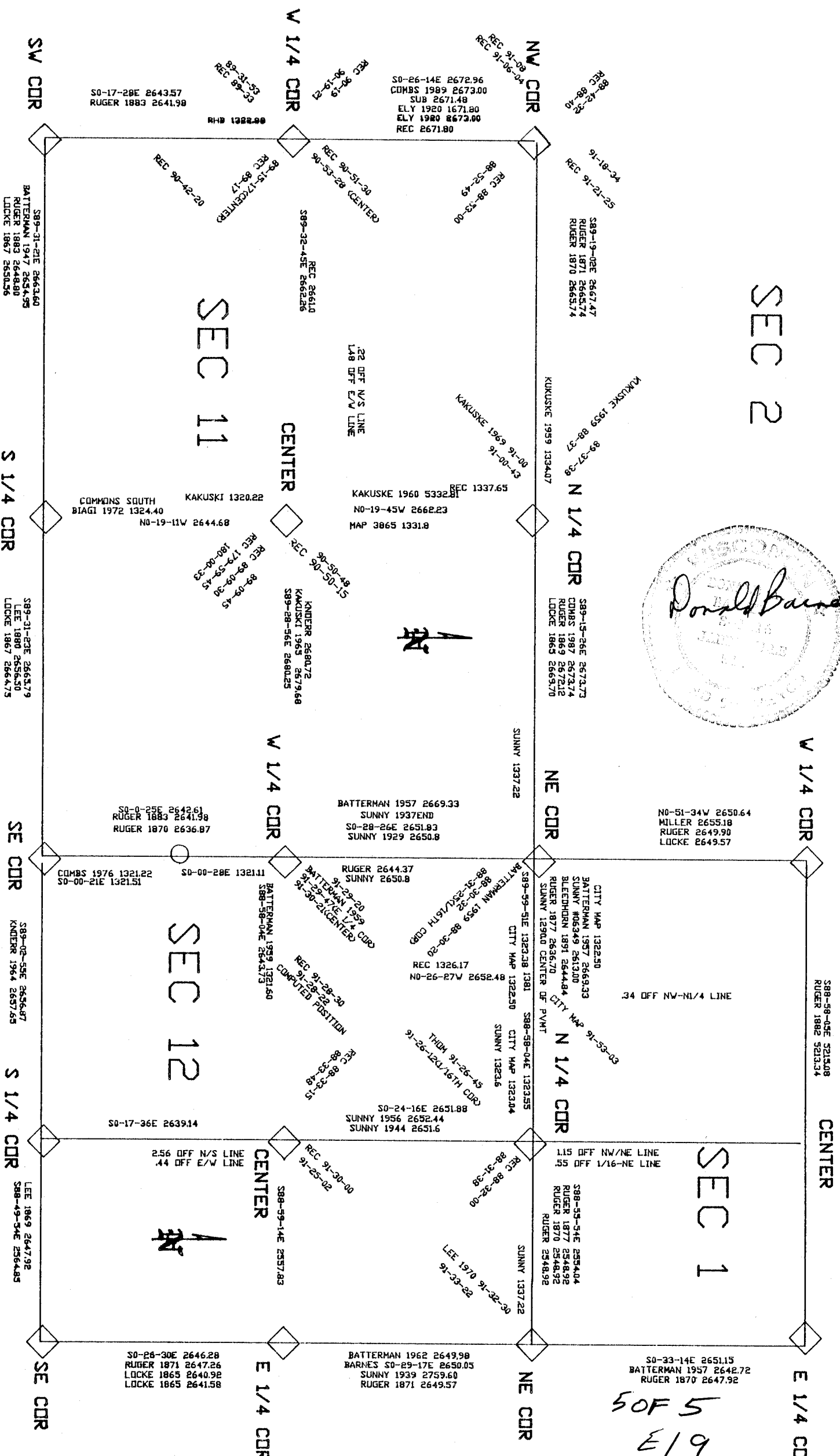


4 OF 5
E19

SEC 2



5 OF 5
E 19



S88-58-05E 5215.08
RUGER 1882 2513.34

CENTER

E 1/4 CD

SEC 1

S88-35-54E 2554.04
RUGER 1877 2548.92
RUGER 1870 2548.92
RUGER 2548.92

SUNNY 1337.22

NE COR

1.15 OFF NW/NE LINE
.55 OFF 1/16-NE LINE

N 1/4 COR

CITY MAP 1322.50
BATTERMAN 1957 2669.93
SUNNY #06349 2613.00
BLEEDHORN 1891 2644.84
RUGER 1877 2636.70
SUNNY 12900 CENTER OF PVMT

S88-58-04E 1323.55
CITY MAP 1322.50
SUNNY 1323.6

SUNNY 1323.6

REC 88-31-32-00

LEE 1970 91-32-30
91-33-22

NE COR

S89-15-26E 2672.73
COMBS 1987 2672.74
RUGER 1869 2672.12
LOCKE 1865 2665.70

SUNNY 1337.22

N 1/4 COR

REC 1337.65
KAKUSKE 1960 5332.81
N0-19-45W 2662.23
MAP 3865 1331.8

.22 OFF N/S LINE
.18 OFF E/W LINE

KAKUSKE 1960 5332.81

BATTERMAN 1957 2669.33
SUNNY 1937.22
S0-28-26E 2651.83
SUNNY 1929 2650.8

RUGER 2644.37
SUNNY 2650.8

REC 1326.17
N0-26-27W 2652.48

S0-24-16E 2651.88
SUNNY 1956 2652.44
SUNNY 1944 2651.6

BATTERMAN 1962 2649.98
BARNES S0-29-17E 2650.05
SUNNY 1939 2759.60
RUGER 1871 2649.57

SUNNY 1337.22

NE COR

CENTER

REC 90-50-48
90-50-50-15
KANDLER 2680.72
KAKUSKI 1965 2579.68
S89-28-56E 2680.25

W 1/4 COR

S0-0-25E 2642.61
RUGER 1883 2641.98
RUGER 1870 2636.87

COMBS 1976 1321.22
S0-00-21E 1321.51

S0-17-36E 2639.14

S0-28-30E 2646.28
RUGER 1871 2647.26
LOCKE 1865 2640.98
LOCKE 1865 2641.58

SUNNY 1337.22

SE COR

REC 91-29-20
91-29-22
BATTERMAN 1959 1321.50
COMPUTED POSITION

REC 91-29-20
91-29-22
BATTERMAN 1959 1321.50
COMPUTED POSITION

REC 88-33-15
88-33-19
SUNNY 1323.6

REC 91-30-00
91-25-02
S88-59-14E 2557.83

E 1/4 COR

SEC 11

KAKUSKI 1320.22
COMMONS SOUTH
BIAGI 1972 1324.40
N0-19-11W 2644.68

SEC 12

2.56 OFF N/S LINE
.44 OFF E/W LINE



SUNNY 1337.22

SE COR

REC 89-15-17(CENTER)
89-17
REC 89-17

REC 89-09-45
89-09-30
180-00-33

REC 91-29-20
91-29-22
BATTERMAN 1959 1321.50
COMPUTED POSITION

REC 91-30-00
91-25-02
S88-59-14E 2557.83

SUNNY 1337.22

SE COR

S0-17-29E 2643.57
RUGER 1883 2641.98

COMMONS SOUTH
BIAGI 1972 1324.40
N0-19-11W 2644.68

S0-0-25E 2642.61
RUGER 1883 2641.98
RUGER 1870 2636.87

COMBS 1976 1321.22
S0-00-21E 1321.51

S0-17-36E 2639.14

S0-28-30E 2646.28
RUGER 1871 2647.26
LOCKE 1865 2640.98
LOCKE 1865 2641.58

SUNNY 1337.22

SE COR

S89-31-21E 2663.60
BATTERMAN 1947 2652.59
RUGER 1883 2648.80
LOCKE 1867 2650.56

S 1/4 COR

S89-31-23E 2665.79
LEE 1880 2656.50
LOCKE 1867 2664.75

SE COR

S89-02-53E 2656.87
KANDLER 1964 2657.65

S 1/4 COR

LEE 1869 2647.92
S88-49-54E 2564.85

SE COR

SE COR

NW COR

S0-26-14E 2672.96
COMBS 1989 2673.00
SUB 2671.48
ELY 1920 1671.80
ELY 1920 2673.00
REC 2671.80

NW COR

REC 88-32-49
88-32-49

NW COR

KAKUSKE 1969 91-00-00
91-00-00

NW COR

REC 1337.65
KAKUSKE 1960 5332.81
N0-19-45W 2662.23
MAP 3865 1331.8

NE COR

SUNNY 1337.22

N 1/4 COR

SUNNY 1323.6

NE COR

SUNNY 1337.22

NE COR

SW COR

S89-31-21E 2663.60
BATTERMAN 1947 2652.59
RUGER 1883 2648.80
LOCKE 1867 2650.56

S 1/4 COR

S89-31-23E 2665.79
LEE 1880 2656.50
LOCKE 1867 2664.75

SE COR

S89-02-53E 2656.87
KANDLER 1964 2657.65

S 1/4 COR

LEE 1869 2647.92
S88-49-54E 2564.85

SE COR

SE COR

W 1/4 COR

REC 89-31-53
89-31-53
REC 89-31-53

W 1/4 COR

REC 89-15-17(CENTER)
89-17

CENTER

REC 89-09-45
89-09-30
180-00-33

W 1/4 COR

S0-0-25E 2642.61
RUGER 1883 2641.98
RUGER 1870 2636.87

W 1/4 COR

COMBS 1976 1321.22
S0-00-21E 1321.51

CENTER

2.56 OFF N/S LINE
.44 OFF E/W LINE

E 1/4 COR

S0-28-30E 2646.28
RUGER 1871 2647.26
LOCKE 1865 2640.98
LOCKE 1865 2641.58

SUNNY 1337.22

SE COR

NW COR

REC 91-38-04
91-38-04
REC 91-38-04

NW COR

REC 88-32-49
88-32-49

NW COR

KAKUSKE 1969 91-00-00
91-00-00

NW COR

REC 1337.65
KAKUSKE 1960 5332.81
N0-19-45W 2662.23
MAP 3865 1331.8

NE COR

SUNNY 1337.22

N 1/4 COR

SUNNY 1323.6

NE COR

SUNNY 1337.22

NE COR

SW COR

S89-31-21E 2663.60
BATTERMAN 1947 2652.59
RUGER 1883 2648.80
LOCKE 1867 2650.56

S 1/4 COR

S89-31-23E 2665.79
LEE 1880 2656.50
LOCKE 1867 2664.75

SE COR

S89-02-53E 2656.87
KANDLER 1964 2657.65

S 1/4 COR

LEE 1869 2647.92
S88-49-54E 2564.85

SE COR

SE COR

W 1/4 COR

REC 89-31-53
89-31-53
REC 89-31-53

W 1/4 COR

REC 89-15-17(CENTER)
89-17

CENTER

REC 89-09-45
89-09-30
180-00-33

W 1/4 COR

S0-0-25E 2642.61
RUGER 1883 2641.98
RUGER 1870 2636.87

W 1/4 COR

COMBS 1976 1321.22
S0-00-21E 1321.51

CENTER

2.56 OFF N/S LINE
.44 OFF E/W LINE

E 1/4 COR

S0-28-30E 2646.28
RUGER 1871 2647.26
LOCKE 1865 2640.98
LOCKE 1865 2641.58

SUNNY 1337.22

SE COR

NW COR

REC 91-38-04
91-38-04
REC 91-38-04

NW COR

REC 88-32-49
88-32-49

NW COR

KAKUSKE 1969 91-00-00
91-00-00

NW COR

REC 1337.65
KAKUSKE 1960 5332.81
N0-19-45W 2662.23
MAP 3865 1331.8

NE COR

SUNNY 1337.22

N 1/4 COR

SUNNY 1323.6

NE COR

SUNNY 1337.22

NE COR

SW COR

S89-31-21E 2663.60
BATTERMAN 1947 2652.59
RUGER 1883 2648.80
LOCKE 1867 2650.56

S 1/4 COR

S89-31-23E 2665.79
LEE 1880 2656.50
LOCKE 1867 2664.75

SE COR

S89-02-53E 2656.87
KANDLER 1964 2657.65

S 1/4 COR

LEE 1869 2647.92
S88-49-54E 2564.85

SE COR

SE COR

W 1/4 COR

REC 89-31-53
89-31-53
REC 89-31-53

W 1/4 COR

REC 89-15-17(CENTER)
89-17

CENTER

REC 89-09-45
89-09-30
180-00-33

W 1/4 COR

S0-0-25E 2642.61
RUGER 1883 2641.98
RUGER 1870 2636.87

W 1/4 COR

COMBS 1976 1321.22
S0-00-21E 1321.51

CENTER

2.56 OFF N/S LINE
.44 OFF E/W LINE

E 1/4 COR

S0-28-30E 2646.28
RUGER 1871 2647.26
LOCKE 1865 2640.98
LOCKE 1865 2641.58

SUNNY 1337.22

SE COR

NW COR

REC 91-38-04
91-38-04
REC 91-38-04

NW COR

REC 88-32-49
88-32-49

NW COR

KAKUSKE 1969 91-00-00
91-00-00

NW COR

REC 1337.65
KAKUSKE 1960 5332.81
N0-19-45W 2662.23
MAP 3865 1331.8

NE COR

SUNNY 1337.22

N 1/4 COR

SUNNY 1323.6

NE COR

SUNNY 1337.22

NE COR

SW COR

S89-31-21E 2663.60
BATTERMAN 1947 2652.59
RUGER 1883 2648.80
LOCKE 1867 2650.56

S 1/4 COR

S89-31-23E 2665.79
LEE 1880 2656.50
LOCKE 1867 2664.75

SE COR

S89-02-53E 2656.87
KANDLER 1964 2657.65

S 1/4 COR

LEE 1869 2647.92
S88-49-54E 2564.85

SE COR

SE COR

W 1/4 COR

REC 89-31-53
89-31-53
REC