

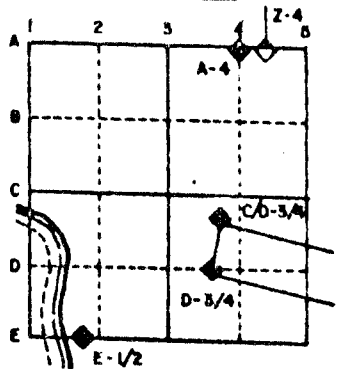
# U.S. PUBLIC LAND SURVEY MONUMENT RECORD

For Public Land Survey Corners in the  
T. 2 N., R. 12 E.

## CORNER CODE INDEX

	1	2	3	4	5	6	7	8	9	10	11	12	13	14	15	16	17	18	19	20	21	22	23	24	25
A																									
B																									
C	6																								
D		5																							
E			4																						
F				3																					
G					2																				
H																									
I																									
J	7																								
K		8																							
L			9																						
M				10																					
N					11																				
O						12																			
P							13																		
Q								14																	
R									15																
S										16															
T											17														
U												18													
V													19												
W														20											
X															21										
Y																22									
Z																	23								
																		24							
																			25						
																				26					
																					27				
																						28			
																							29		
																								30	
																									31
																									32
																									33
																									34
																									35
																									36

### EXAMPLE



ROCK TWP  
ROCK COUNTY WI

IF AVAILABLE  
STATE PLANE COORDINATES

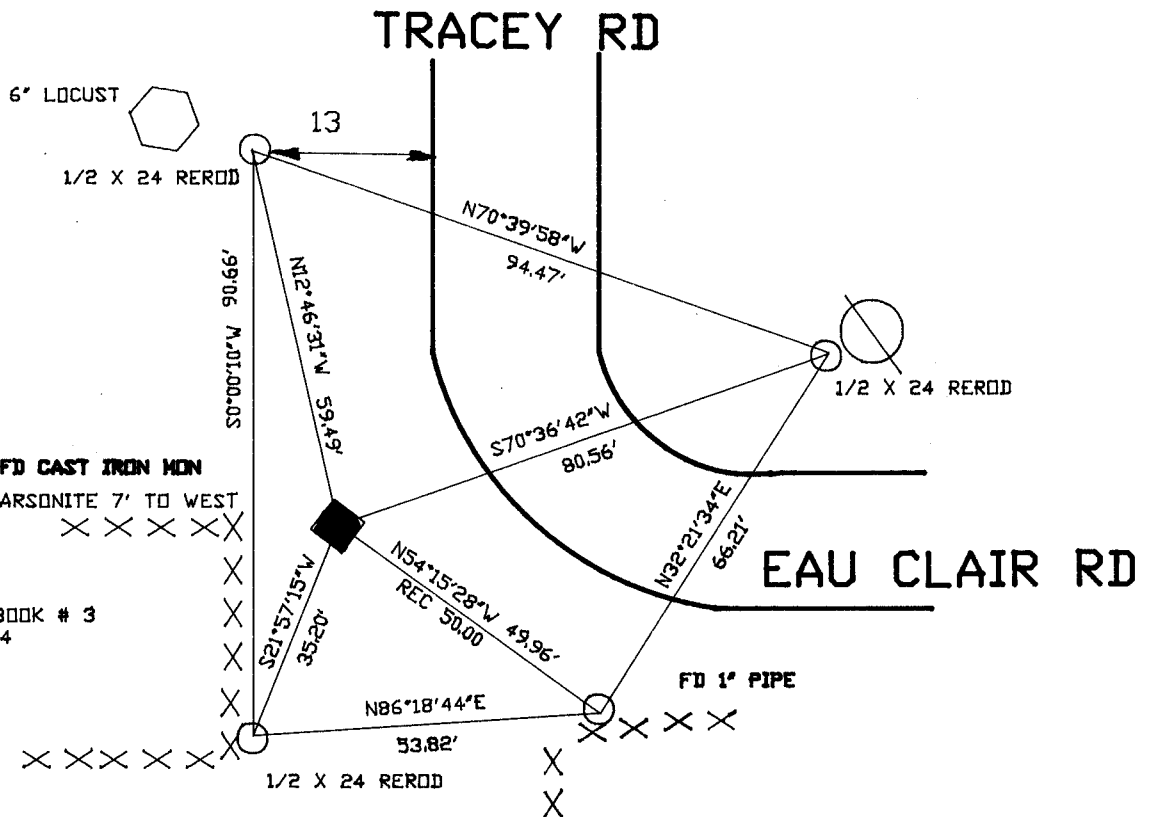
NAD  
27 North (Y) 224,958.92 Elevation (Z) \_\_\_\_\_  
East (X) 2,244,981.92 Zone \_\_\_\_\_  
Hor. Datum \_\_\_\_\_ Vert. Datum \_\_\_\_\_

PLACE MONUMENT SYMBOL (◆) AT PROPER  
LOCATION ON ABOVE INDEX

HURD  
224,959.53  
2,244,982.10

◆ CORNER MONUMENT      ○ WITNESS MONUMENT

BEARINGS ARE BASED ON: ASSUMED



MICROFILMED

SHEET \_\_\_ OF \_\_\_

CORNER CODE: R9

(B) Describe any record evidence, monument evidence, occupational evidence, testimonial evidence or any other material evidence you considered, and whether the monument was found or placed.

1834 HARRISON ORIGINAL GOVERNMENT SURVEYOR. FIELD NOTES - MEASURED 2656.5 TO S 1/4 CORNER OF SECTION 21 AND 2659.8 TO S 1/4 CORNER OF SECTION 20.

1851 Mc VEAN VOL 1 PG 3 STATES NOTHING ABOUT CORNER. SHOWS A DISTANCE OF 2645.94 TO N 1/4 CORNER OF SECTION 28 AND 2625.48 TO W 1/4 CORNER OF SECTION 28.

1860 RUGER VOL 1 PG 137 PLACED LIMESTONE 15X8X3 AND SURROUNDED BY 4 LIMESTONES. SHOWS A DISTANCE TO THE SW CORNER OF SECTION 21. AS 2646.93 AND 2169.09 TO THE MEANDER CORNER ON THE SOUTH LINE OF THE SE QUARTER OF SECTION 21.

1962 BATTERMAN JR. VOL 4 PG 125 FOUND A 2" PIPE THAT WAS SET BY C. SHIMEALL AFTER DIGGING AND FINDING BROKEN LIMESTONE. SHOWS REFERENCE TIES AND MONUMENTS.

1972 LEE VOL 4 PG 578 SET CAST IRON MONUMENT. SHOWS A DISTANCE OF 2972.91 TO THE S 1/4 CORNER OF SECTION 20 AND 2631.32 TO THE E 1/4 CORNER OF SECTION 29.

19?? HURD COORDINATES OF N/S 224,959.53; E/W 2,244,982.10

FOUND CAST IRON MONUMENT.

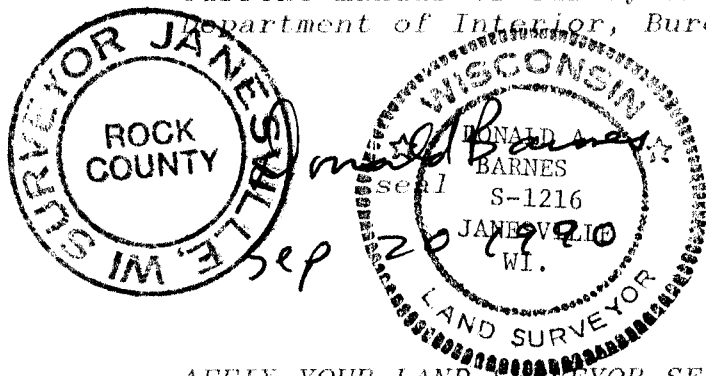
1) Was the corner restored through acceptance of (1) an obliterated evidence location, or, (2) a found perpetuated location?

ACCEPTED FOUND PERPETUATED LOCATION.

D) Describe any material discrepancy between the location of the corner as restored or reestablished and the location of that corner as previously restored or reestablished by distance and direction. Show the discrepancy on the plan view drawing under (a), above. Show the distances between the corner as previously restored or reestablished and (1) the corner as restored or reestablished, and (2) to at least 4 of the witness monuments shown on the drawing in (a), above.

(E) Was the corner reestablished through lost corner proportionate methods? If so, show the method, including the directions and distances to other public land survey corners used as evidence or used for proportioning the corner location.

I, Donald Barnes, hereby certify that the corner points as identified by the corner code index were, in a field survey on, JULY 13, 1989, established, re-established, monumented, re-monumented, recovered or restored as expressed below and in conformance with the regulations and rules as required in the current manual of survey instructions of the United States Department of Interior, Bureau of Land Management.



COUNTY SURVEYOR FILING DATA

Date of computer entry \_\_\_\_\_

Date microfilmed \_\_\_\_\_

Number of included sheets \_\_\_\_\_

CORNER CODE

R 9

AFFIX YOUR LAND SURVEYOR SEAL