

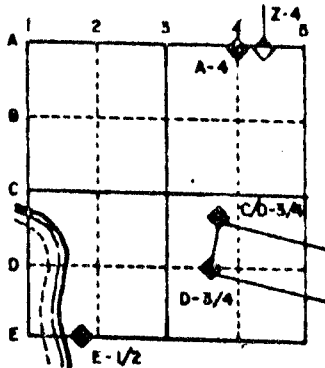
U.S. PUBLIC LAND SURVEY MONUMENT RECORD

For Public Land Survey Corners in the
T. 2 N., R. 12 E.

CORNER CODE INDEX

	1	2	3	4	5	6	7	8	9	10	11	12	13	14	15	16	17	18	19	20	21	22	23	24	25
A																									
B																									
C	6																								
D		5																							
E			4																						
F				3																					
G					2																				
H																									
I																									
J																									
K																									
L																									
M																									
N																									
O																									
P																									
Q																									
R																									
S																									
T																									
U																									
V																									
W																									
X																									
Y																									
Z																									

EXAMPLE



ROCK TWP
ROCK COUNTY WI

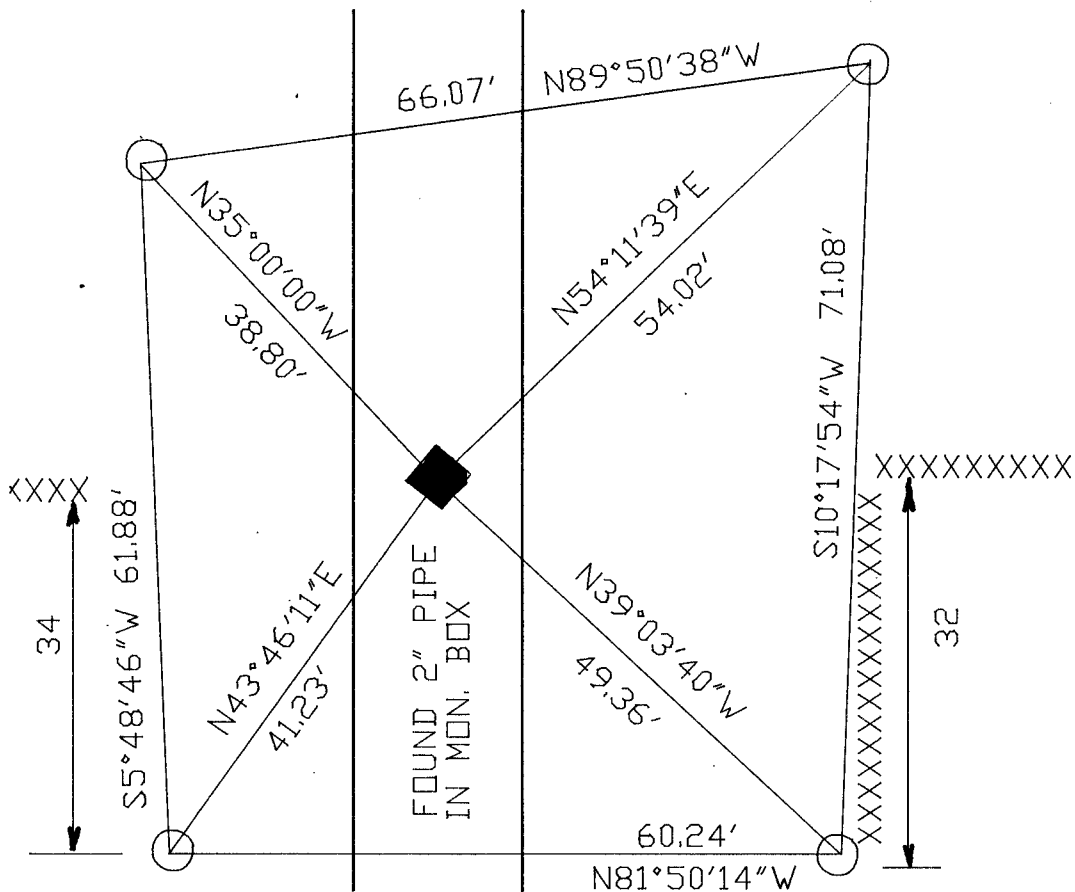
IF AVAILABLE
STATE PLANE COORDINATES

NAD
27 North (Y) 230,399.53 Eleve. (Z) _____
East (X) 2,258,152.25 Zone _____
Hor. Datum _____ Vert. Datum _____

PLACE MONUMENT SYMBOL (◆) AT PROPER LOCATION ON ABOVE INDEX
HURD 230, 380.51
2,258, 152.37

◆ CORNER MONUMENT ○ WITNESS MONUMENT

BEARINGS ARE BASED ON: ASSUMED



DAKHILL RD

○ 3/4X24 REROD WITH
ORANGE PLASTIC CAP

FIELD BOOK #3 PG 26

MICROFILMED

SHEET ___ OF ___

CORNER CODE: N 19

(B) Describe any record evidence, monument evidence, occupational evidence, testimonial evidence or any other material evidence you considered, and whether the monument was found or placed.

- 1836 LYON ORIGINAL GOVERNMENT SURVEYOR. FIELD NOTES - SET QUARTER SECTION POST AND MADE MOUND OF EARTH AND SOD. MEASURED 2646.60'
- 1867 LOCKE VOL 1 PG 289 FOUND OLD STAKE AT JUNCTION OF SOD FENCES.
- 1876 RUGER VOL 2 PG 217. FOUND REMAINS OF OLD STAKE AT THE JUNCTION OF OLD SOD FENCES, PUT IN ITS PLACE LIMESTONE 21X7 1/2 X 3 1/2. SHOWS A DISTANCE OF 2648.91 TO CENTER OF SECTION 23.
- 1880 LEE VOL 2 PG 314 FOUND LIMESTONE SET BY RUGER AT CORNER. SHOWS A DISTANCE OF 2653.86 CENTER OF SECTION 14.
- 1939 SUNNY VOL 3 PG 412 FOUND STONE MONUMENT. SET PIPE ON TOP. SHOWS 2647.10 TO SW CORNER OF SECTION 14 AND 2652.10 TO CENTER OF SECTION 14. 1941 SUNNY VOL 3 PG 469 SET 3/4" IRON PIPE FOR CORNER IN 1929. SHOWS 2648.0 TO NW CORNER SECTION 23 AND 2654.20 TO NE CORNER SECTION 23.
- 1965 BATTERMAN JR. VOL 4 PG 264. FOUND 1" PIPE SET IN 8"X8" LIMESTONE 3' DEEP.
- 19?? HURD VOL 5 PG 517 N/S 230,380.51; E/W 2,258,152.37
- 1989 BARNES VOL 6 PG 396 SHOWS THE FOLLOWING DISTANCES
- | | | |
|-------------------|----------------|---------|
| TO: NW COR SEC 23 | N89-21-51E | 2647.23 |
| | BATTERMAN 1958 | 2647.96 |
| CENTER 23 | N1-23-35W | 2652.42 |
| NE COR SEC 23 | N89-26-46E | 2654.28 |
| | BATTERMAN 1958 | 2654.30 |

FOUND 2" PIPE IN MONUMENT BOX.

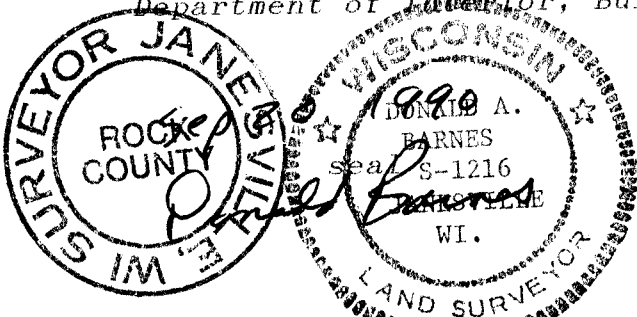
C) Was the corner restored through acceptance of (1) an obliterated evidence location, or, (2) a found perpetuated location?

ACCEPTED FOUND MONUMENT.

D) Describe any material discrepancy between the location of the corner as restored or reestablished and the location of that corner as previously restored or reestablished by distance and direction. Show the discrepancy on the plan view drawing under (a), above. Show the distances between the corner as previously restored or reestablished and (1) the corner as restored or reestablished, and (2) to at least 4 of the witness monuments shown on the drawing in (a), above.

(E) Was the corner reestablished through lost corner proportionate methods? If so, show the method, including the directions and distances to other public land survey corners used as evidence or used for proportioning the corner location.

I, Donald Barnes, hereby certify that the corner points as identified by the corner code index were, in a field survey on, August 17, 1990, established, re-established, monumented, re-monumented, recovered or restored as expressed below and in conformance with the regulations and rules as required in the current manual of survey instructions of the United States Department of Interior, Bureau of Land Management.



AFFIX YOUR LAND SURVEYOR SEAL

COUNTY SURVEYOR FILING DATA

Date of computer entry _____

Date microfilmed _____

Number of included sheets _____

CORNER CODE

N19